

WILLAPA NATIONAL WILDLIFE REFUGE

2012-2013 HUNTING REGULATIONS

Willapa National Wildlife Refuge contains over 16,000 acres of uplands and tidelands divided into several management units. All state regulations apply, in addition to special Refuge regulations. All forms of trapping are prohibited. UNITS AND SPECIES NOT LISTED ARE CLOSED TO HUNTING.



Northern pintail/Photo courtesy of Rollin Bannow

MAINLAND UNITS

TEAL SLOUGH SOUTH TO BEAR RIVER (GMU 681)

Teal Slough south to the Bear River is open to elk and deer hunting. Refuge Headquarters and immediately north of Bear River, where Refuge quarters are located, are closed. There is private property north of Greenhead Slough to Omera Point. Access to the southeastern most portion of the Refuge requires boat access.

DEER

- Early Archery Season, SEPT. 1 - 28, (2 pt. min or antlerless)
- Late Archery Season, NOV. 21 - DEC. 8, (2 pt. min or antlerless)
- Modern Firearm, OCT. 13 - 31, (2 pt. min)
- Late Season Modern Firearm, NOV. 15 - 18, (2 pt. min)

ELK

- Early Archery Season, SEPT. 4 - 16, (3 pt. min or antlerless)
- Late Season Archery, NOV. 21 - DEC. 15, (3 pt. min or antlerless)
- Modern Firearm, NOV. 3 - 14, (3 pt. min)

LONG ISLAND (GMU 699)

Long Island is an ARCHERY ONLY hunting area. Hunting permits are required and available at no cost from the Refuge Headquarters parking lot orientation panel.

Camping: A camping permit is required during, and one week prior to, the early elk archery season. Self-issue camping permits are available on a first-come, first-serve basis at the Refuge Headquarters parking lot orientation panel. Camping permits are required for both hunters and non-hunters. No more than 5 people per camp site, and camping is limited to 14 consecutive days (determined by the first member of the camping party's arrival). Camping is allowed in designated sites only. Only downed wood may be used for firewood. Campers are encouraged to camp bear friendly and exercise "Leave No Trace" practices.

Access: Visitors must provide their own boat transportation to and from Long Island. Access is best at a higher tide (6 feet or higher). For safety, know the local tide conditions.

Shellfish Harvesting: State owned tidelands are open to public clamming on the western side of Long Island. Privately owned tidelands are closed to the public.

DEER

- Early Archery Season, SEPT. 1 - 28, (any deer)
- Late Season Firearm***, Nov 15 – 18 (Any buck)
- Late Archery Season, NOV. 21 - DEC 15, (any deer)

ELK

- Early Archery Season, SEPT. 4 - 16, (3 pt. min or antlerless)
- Late Archery Season, NOV. 21 - DEC. 15, (3 pt. min or antlerless)

BEAR

- General Season***, SEPT. 1 - NOV. 15, (any bear)

FOREST GROUSE (Ruffed & Sooty)

- SEPT. 1 - DEC 31, Archery, (4 per day/12 in possession)

PRESIDENTIAL PROCLAMATION AREA

The waters surrounding Long Island and much of southern Willapa Bay are closed to all waterfowl hunting by Presidential Proclamation. Please check Refuge map for exact boundaries.

WATERFOWL HUNTING

- SEPT. 22 - 23 (YOUTH HUNTING ONLY)
- OCT. 13 – 17 & OCT 20 - JAN. 27, CLOSED OCT 18 - 19

Waterfowl hunting is permitted 7 days/week at the Leadbetter, Potshot, North Potshot, and Stanley Peninsula Units. A Washington State Discover Pass is required to access the Leadbetter Unit from Stackpole Road. The Porter Point Unit is open to free-roam waterfowl and coot hunting on Sundays, Mondays and Thursdays during the season. The Unit can be accessed by 67th Place from Sandridge Road in Long Beach. No hunting from roads or dikes. Car-top boats are allowed to access the Porter Point Unit. Electric motors only. Lewis Unit is closed.

GOOSE HUNTING (Zone 2B)

- OCT 13 – 24 & Nov 3 - JAN. 19, CLOSED OCT 25 – NOV 2

Canada goose hunting is permitted on the Riekkola Unit on Wednesdays and Saturdays, until the dusky goose quota is met. Shooting hours are from 8:00am to 4:00pm. The daily goose bag limit is 4 geese/8 in possession. Hunters must record their time and initial their harvest cards immediately as each goose is harvested. There is a 25 shell limit per day-per hunter. Aleutian geese are protected on the Refuge. All hunters must check in at the end of the day regardless of success.

Goose hunting is allowed from blinds only. Eight hunting blinds are available with one blind available for hunters with disabilities. Blind capacity is 3 persons. Blind selection is held at 7:00am at the Riekkola Hunter Check Station. During the remainder of the hunt day, hunters may select blinds as they become available. Only nontoxic shot is permitted. Hunt fee is \$5.00 per person. Fees for Interagency Senior or Access Pass holders are \$2.50. Age 15 and under are free. Hunters must leave their gun in the blind except to pursue crippled birds.

ADDITIONAL REFUGE INFORMATION

- **Nontoxic Shot Required:** All hunters are required to use only federally approved nontoxic shot while waterfowl hunting. Use or possession of lead shot is prohibited while hunting waterfowl.
- **Injuries or accidents** occurring on the Refuge must be reported immediately to refuge headquarters.
- **Littering** is unlawful. Take your spent shells and litter home.
- **Motorized equipment:** including all - terrain vehicles (ATV's), dirt bikes and chain saws are prohibited on Refuge lands.
- **Boating:** Long Island is accessible only by boat. Boats may be used to access tidal portions of the Leadbetter Point Unit. Tidal flows and fluctuations, and strong winds can make boating difficult and sometimes dangerous. A launch ramp is located at Refuge Headquarters. Another ramp is available at the Nahcotta Marina.
- **Removal of Items Prohibited:** Collecting and removing ANY archeological, historical, or natural material such as plants, mushrooms, berries, or antler sheds is prohibited.
- **Blinds and Tree Stands:** Only blinds or tree stands that are temporary in design and that are utilized for consecutive days will be permitted. Digging, cutting trees, and vegetation altering for stand or blind placement is not permitted.
- **Foot traffic only:** All units of the Refuge are open to foot traffic only unless otherwise specified.
- **Dogs:** Dogs are prohibited on all Refuge units except certified assistance animals and dogs used for hunting waterfowl.
- **Alcohol:** The use or possession of alcoholic beverages while hunting is prohibited.
- **Caution:** Hunters should examine their own abilities and limitations before using the Refuge. Hunters are cautioned to pay attention to tidal fluctuations when hunting tidal areas.

***Hunters may hunt during modern firearm season, but must possess a valid modern firearm big game license and use archery equipment.

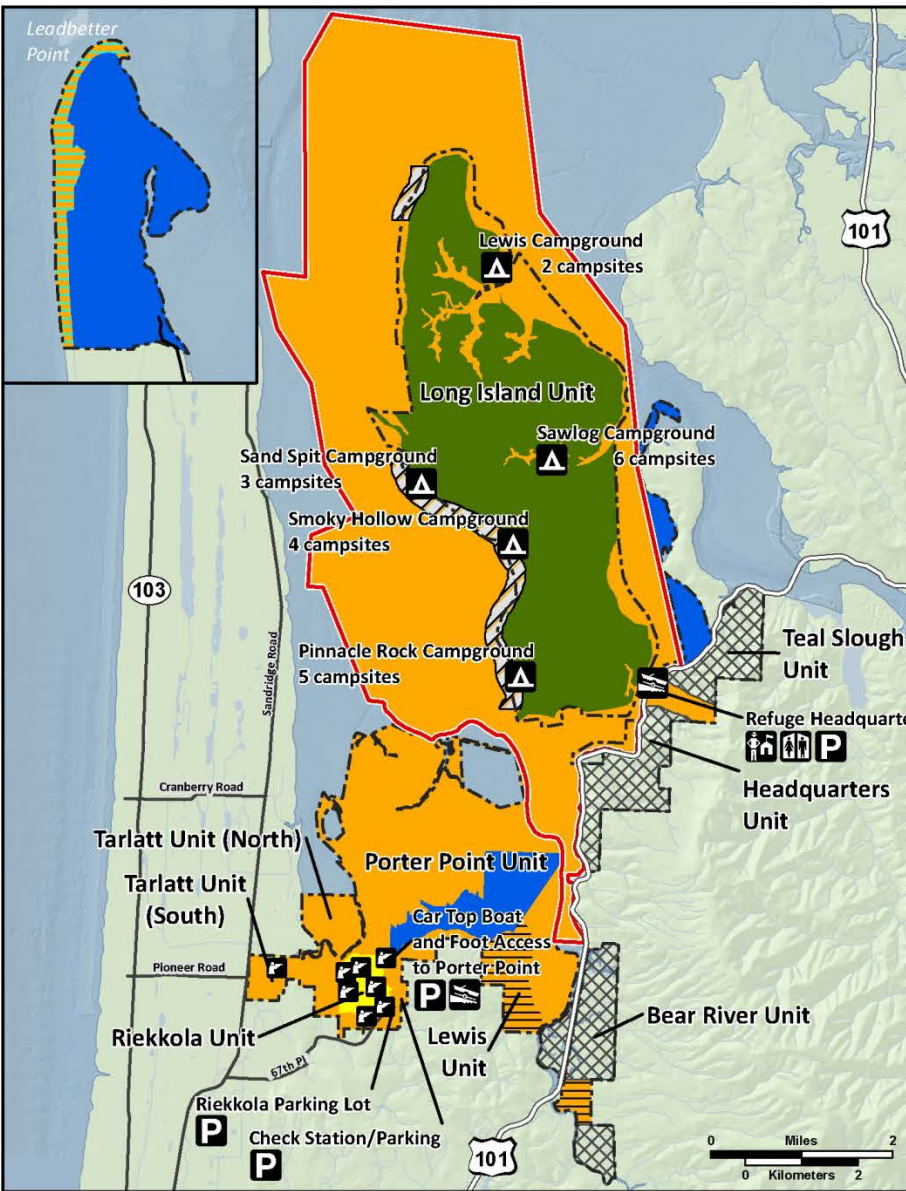


U.S. Fish & Wildlife Service

Willapa National Wildlife Refuge

Pacific County, Washington

Hunting and Fishing Overview



Legend

Refuge Boundaries

- Refuge Managed Lands (Fee Title or Easement)
- Proclamation Boundary

Public Use Facilities

- Refuge Headquarters
- Bathroom
- Parking
- Boat Launch
- Campground (Refuge permit required)
- Hunting Blind (#6 is Accessible)

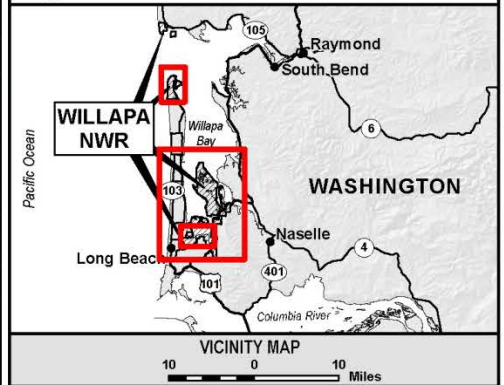
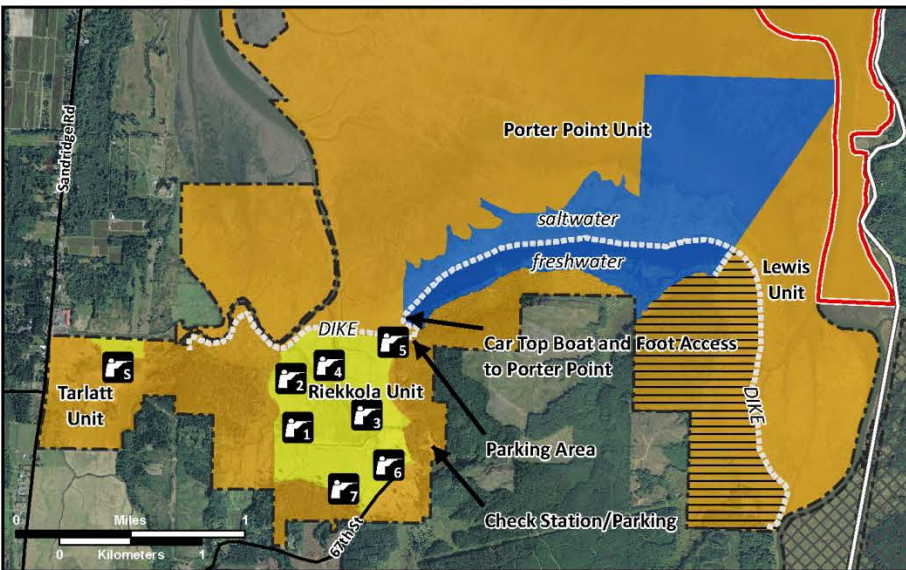
Hunting Status and Closure Areas

- Deer and elk hunting.
- Refuge lands, tidelands, and water closed to all hunting.
- Waterfowl hunting.
- Regulated goose hunt area. Refuge permit required.
- Archery Hunting for elk, deer, black bear, and grouse (ruffed and blue) only. Refuge permit required.
- Clamming
- Closed to Public
- Closed to Public March 15-September 30

Mainland units from Teal Slough south to Bear River (excluding Headquarters and Living Quarters) are open to deer and elk hunting. Lewis Unit is closed to free-room waterfowl and coot hunting. Riekkola and Tarlatt Units are open to regulated hunting during Canada goose season. Leadbetter Point is open to free-room waterfowl and coot hunting except in the snowy plover closure area. Sport archery hunting is permitted on Long Island. All state regulations and seasons apply.

PROCLAMATION BOUNDARY AREA CLOSED TO MIGRATORY BIRD HUNTING.

Fishing is permitted from the shores of Willapa Bay. Fishing is not permitted on refuge streams or interior sloughs.



Contact Willapa National Wildlife Refuge for more information:

3888 SR 101, Ilwaco, WA 98624

Phone: 360-484-3482

Email: willapa@fws.gov

Website: <http://www.fws.gov/willapa>