

U.S. Fish & Wildlife Service

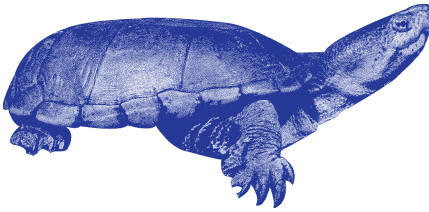
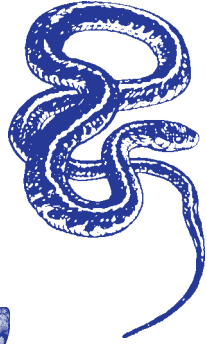
St. Marks

National Wildlife Refuge Young People's Check List



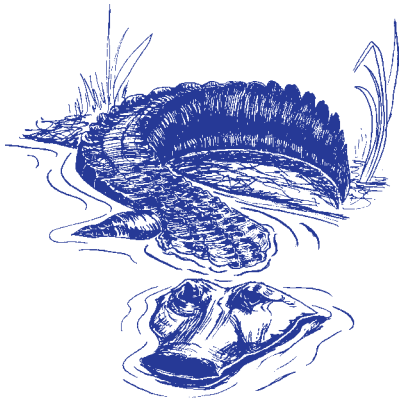
Have you seen any of the wildlife below? If so, check the appropriate box.

Snake



Turtle

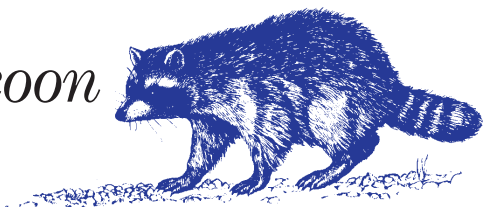
Alligator



Opossum



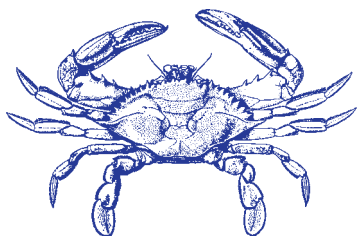
Raccoon



Squirrel



*Cabbage
Palm*



Blue Crab



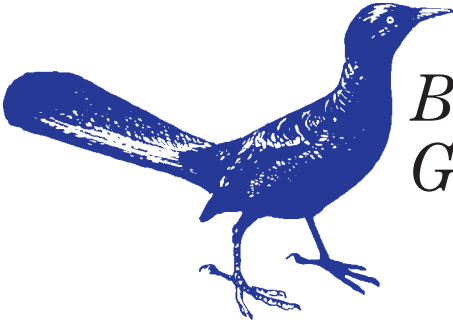
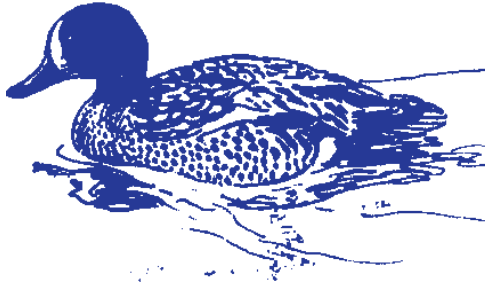
*Swamp
Fern*



*Birds of the
Refuge*

Although the birds below are here at St. Marks at different times throughout the year, you should be able to always check off a least four of them.

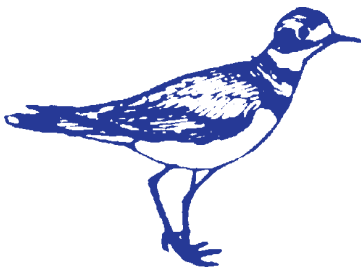
*Blue-
winged
Teal*



*Boat-tailed
Grackle*



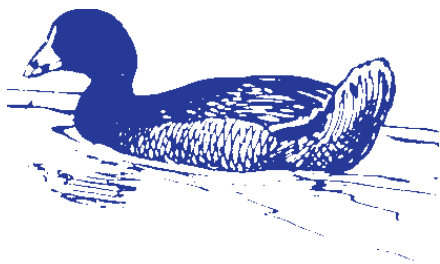
Marsh Hawk



Killdeer



*American
Coot*



*Great Blue
Heron*

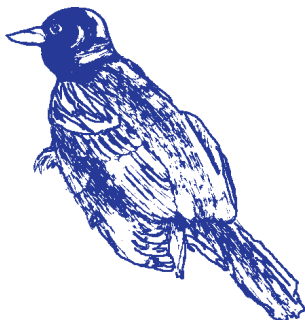
Great Egret



Pintail



*Red-winged
Blackbird*



Wildlife

B

I

N

Pine Tree	Yellow Flower	D
Litter (cans)	Insect	Turkey
River	Cattails	Free
Mockingbird	Cabbage Palm	Edible
Oak Tree	Butterfly	Sn

Above is a Bingo card to test your powers of observation as you drive through the Refuge. Get everyone in the car in the game, and see who can get "Bingo" first. Mark objects by putting an "X" in the appropriate square. There is a 30 minute time limit, after which the winner is determined by counting the number of squares filled.

N

G

O

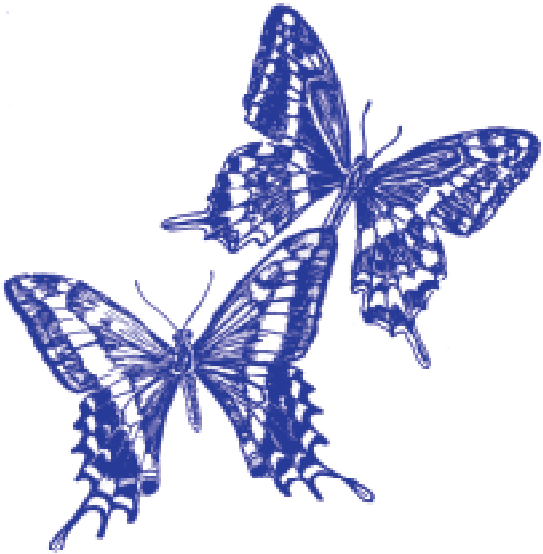
eer	Alligator	Impoundment
y Vulture	Source of Air/ Water Pollution	Shells
e Space	Trail	Heron or Egret
le Plant	Refuge Sign	Seagull
nake	Three Birds together	Water lilies

	1		2				3			4								
					6													
8			5									10				12		
												7						
17			14															
			9															
												11						16
					13		18											
					15													

Across

- Refuges such as St. Marks are under this agency in the Dept. of the Interior (abbrev.).
- St. Marks has 17,500 acres as _____ Area, protected by law from man's disturbance.
- St. Marks Refuge protects and enhances natural habitat to benefit _____.
- The largest of the long-legged wading birds - _____ Blue Heron.
- One of the best-loved landmarks is the historic St. Marks _____.
- Oak _____ provide acorns, an excellent wildlife food.
- A large game bird.
- An endangered species, the _____ - _____ woodpecker, nests at St. Marks.
- A pine needle is a kind of _____.

Wildlife Crossword Puzzle



(see next page for answers)

Down

2. Its razor-sharp stems earned this plant the name _____ palmetto.
3. This large shorebird displays dark stripes on its wings in flight.
4. A large refuge mammal that sheds its antlers once a year.
6. The largest reptile on the Refuge, this animal lives in the marsh.
8. This bird is the “garbage collector” on the Refuge, eating carrion.
10. The Snowy _____ is a small, white wading bird with yellow feet.
12. This endangered bird builds huge nests at St. Marks and is noted for its white head and sharp talons.
14. A group of migratory birds arriving at St. Marks is called a _____.
16. Fiddler crabs burrow in the _____.
18. Another woodpecker found in the southeastern woodlands is the _____ - bellied woodpecker.

Please do not litter!

Many birds die when they become entangled in fishing lines, 6-pack rings and other trash, or when they mistake garbage for food.

For further information, contact:

*Refuge Manager
St. Marks National
Wildlife Refuge*

P. O. Box 68

St. Marks, Florida 32355

850/925 6121

Answers

Across:

1. FWS
2. Wilderness
5. Wildlife
7. Great
9. Lighthouse
11. Trees
13. Turkey
15. Red-cockaded
17. Leaf

Down:

2. Saw
3. Willet
4. Deer
6. Alligator
8. Vulture
10. Egret
12. Eagle
16. Sand
18. Red

**St. Marks
National Wildlife Refuge
1255 Lighthouse Road
St. Marks, Florida 32355
850/925 6121
R4RW_FL.SMK@mail.gov**

**U.S. Fish & Wildlife Service
1 800/344 WILD
<http://www.fws.gov/r4eao>**

October 1998

