

Skilak Lookout Trail

Round Trip: 4 miles
Difficulty: Moderate
Hiking Time: 3 to 4 hours

U.S.G.S Maps: Kenai B1
Elevation Gain: 700 feet
High Point: 1,400 feet



Trailhead: The Skilak Lookout trail is located on Skilak Lake Road mile 5.4 from the east entrance junction with the Sterling Highway. It is approximately 3 miles east of Upper Skilak Campground and 2 miles west of Hidden Lake Campground on Skilak Lake Road. The parking area is on the north side of the road and the trail begins on the south side.

DESCRIPTION: Skilak Lookout trail passes through the Hidden Creek burn that occurred in May of 1996, which burned 5,200 acres. The trail ends at a rocky area overlooking Skilak Lake. The trail gains elevation gradually, though there are several steep sections near the end of the trail. Most of the trail is dry and in good condition, but it does pass through several areas which may be wet and muddy. There are lots of high grasses that tend to hang into the trail later in the summer. Sturdy hiking shoes are recommended. Rain gear is recommended on wet days.

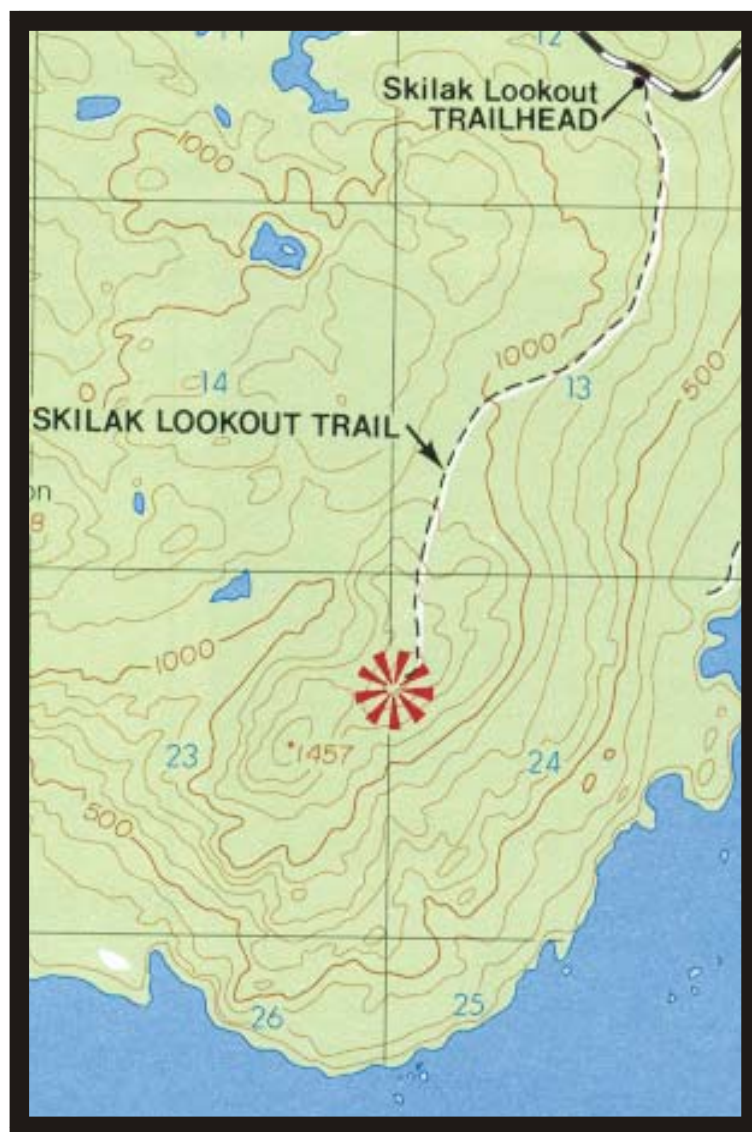
SCENIC VIEWS: The view at the end of the trail is spectacular. Skilak Lake, the Kenai Mountains, and the lower portion of the Kenai River can be seen from here. Don't forget your camera and binoculars. There are also several good views through the burn area.

CAMPING: There are no established campsites and few areas suitable for tents. No water is available during most of the summer. Backpacking stoves should be used to reduce impacts.

FISHING: There are no fishing opportunities along this trail.

OTHER ACTIVITIES: Berry picking along the trail can be fair to good during late summer and wildlife can be seen throughout the forest. Look for moose, bears, and songbirds. Wildflowers grow in profusion along the trail and at the trail's end.

WINTER ACTIVITIES: The trail provides good snowshoeing opportunities during winters with adequate snowfall, but has too many sharp bends for good cross-country skiing.



Each square = 1 mile