

Bear Mountain Trail

Round Trip: 1.6 miles
Difficulty: Moderate
Hiking Time: 2 hours

U.S.G.S Maps: Kenai B1
Elevation Gain: 400 feet
High Point: 1,300 feet



Trailhead: Bear Mountain Trail is located on Skilak Lake Road, 6.0 miles from the east entrance junction with the Sterling Highway. It is approximately 2.4 miles east of Upper Skilak Campground and 2.4 miles west of Hidden Lake Campground.

DESCRIPTION: Bear Mountain trail is short, and gains elevation quickly. The trail passes through spruce forest at its beginning, but soon opens up to scattered alder patches. The trail ends at a rocky outcropping. Sturdy hiking shoes are recommended.

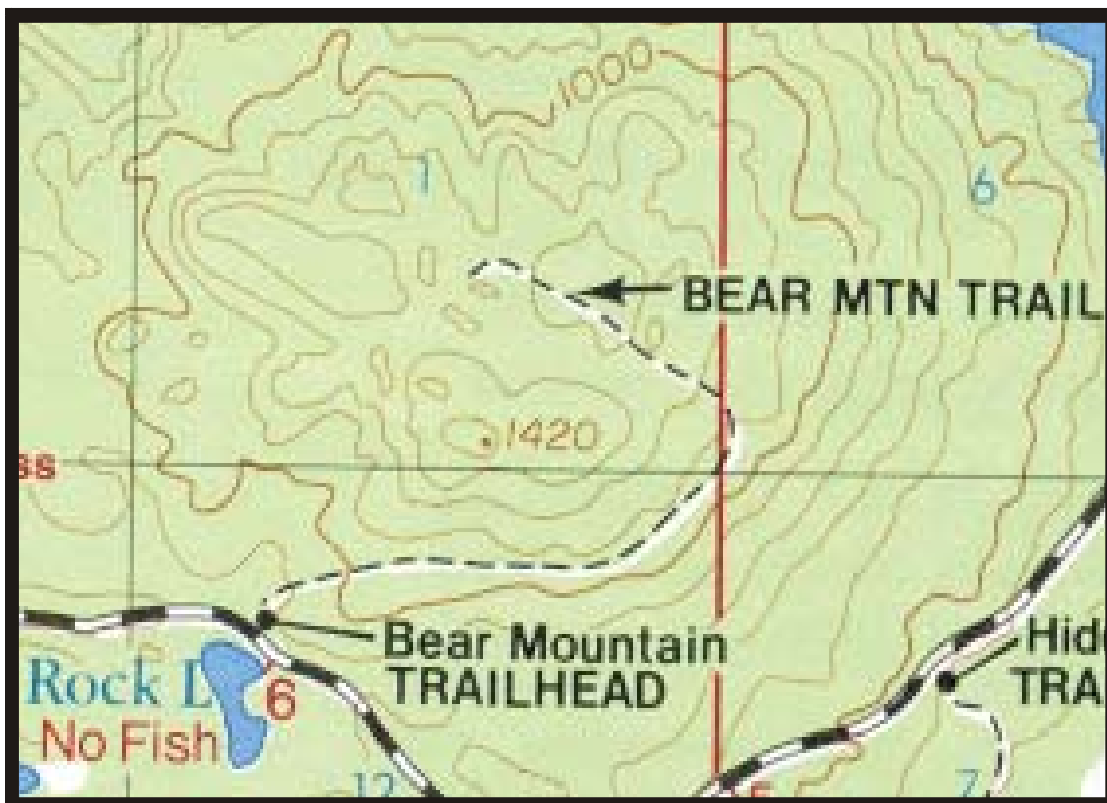
SCENIC VIEWS: At the end of Bear Mountain Trail are spectacular views of the Kenai Mountain Range and the Kenai River Basin. Bring your camera and binoculars.

CAMPING: Areas suitable to tent camping are available on top of Bear Mountain. Please use a backpacking stove to reduce impact. Carry water, as none is available.

FISHING: There are no fishing opportunities along this trail. The lake (Rock Lake) across from the Bear Mountain parking area has no sport fish in it.

OTHER ACTIVITIES: Wildflowers can be seen in profusion during the summer months. This is also a good area for viewing wildlife.

WINTER ACTIVITIES: The trail provides snowshoeing opportunities during winters with sufficient snow cover.



Each square = 1 mile