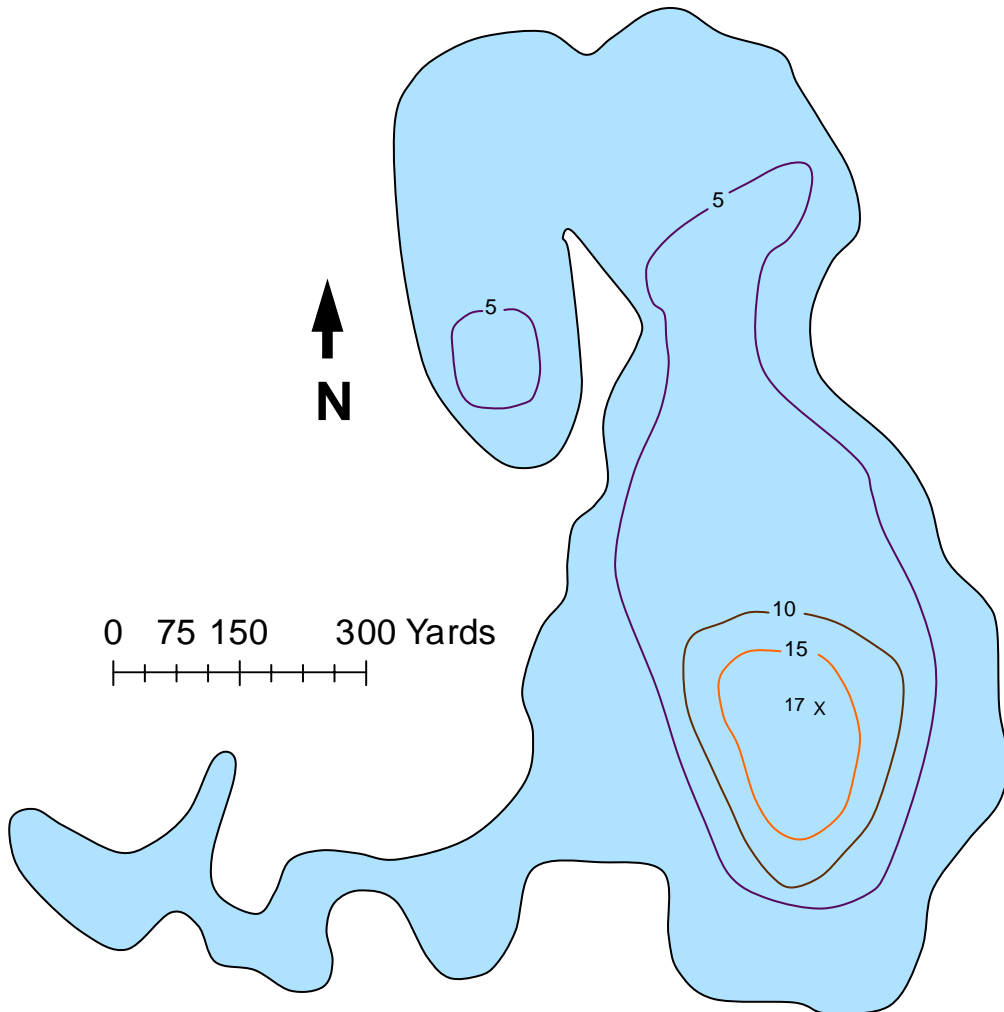




U.S. Fish & Wildlife Service

Kenai Fish & Wildlife Field Office
43655 Kalifornsky Beach Road
Soldotna, AK 99669 907-262-9863

Snipe Lake



Surface Acres: 128

Maximum depth (ft): 17

Shoreline Length (ft): 5,458

Most recent fish survey: 2000

Sport fish species observed: rainbow trout, coho salmon

Latitude: 60°45.31'N

Longitude: -150°58.55'W

Access: Remote

Lake Public Access: Remote location in Swanson River watershed.