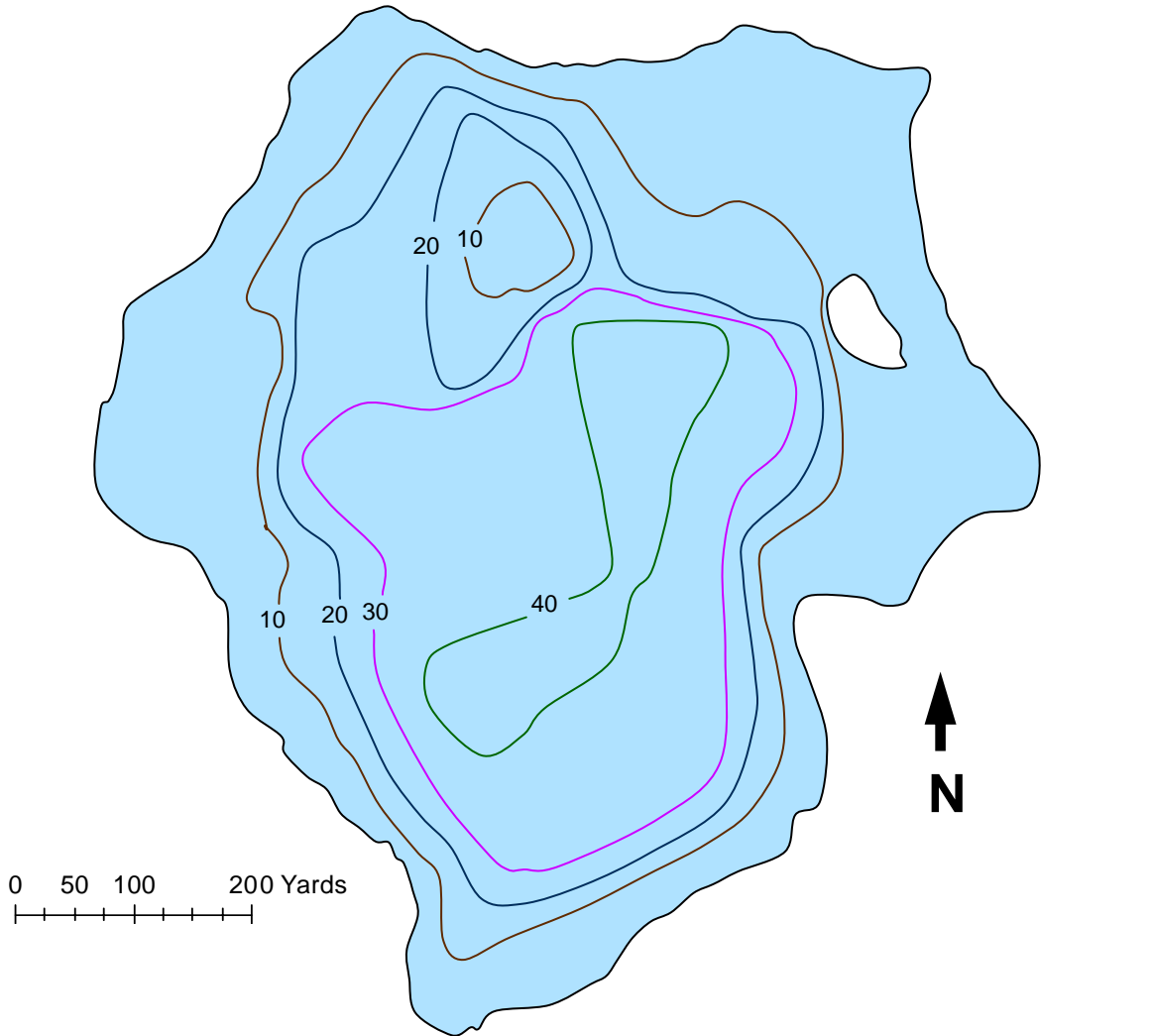




U.S. Fish & Wildlife Service

Kenai Fish & Wildlife Field Office
43655 Kalifornsky Beach Road
Soldotna, AK 99669 907-262-9863

Petersen Lake



Surface Acres: 92

Maximum depth (ft): 41

Shoreline Length (ft): 2,744

Most recent fish survey: 1984

Sport fish species observed: rainbow trout, coho salmon, sockeye salmon

Latitude: 60°31.28'N

Longitude: -150°23.97'W

Access: Road

Lake Public Access: Mile 68.3 Sterling Hwy, 0.6 miles southwest from Sterling Hwy. At end of road Petersen Lake Campground facilities include 3 campsites, tables, firepits, water, toilets, boat launch and parking area.