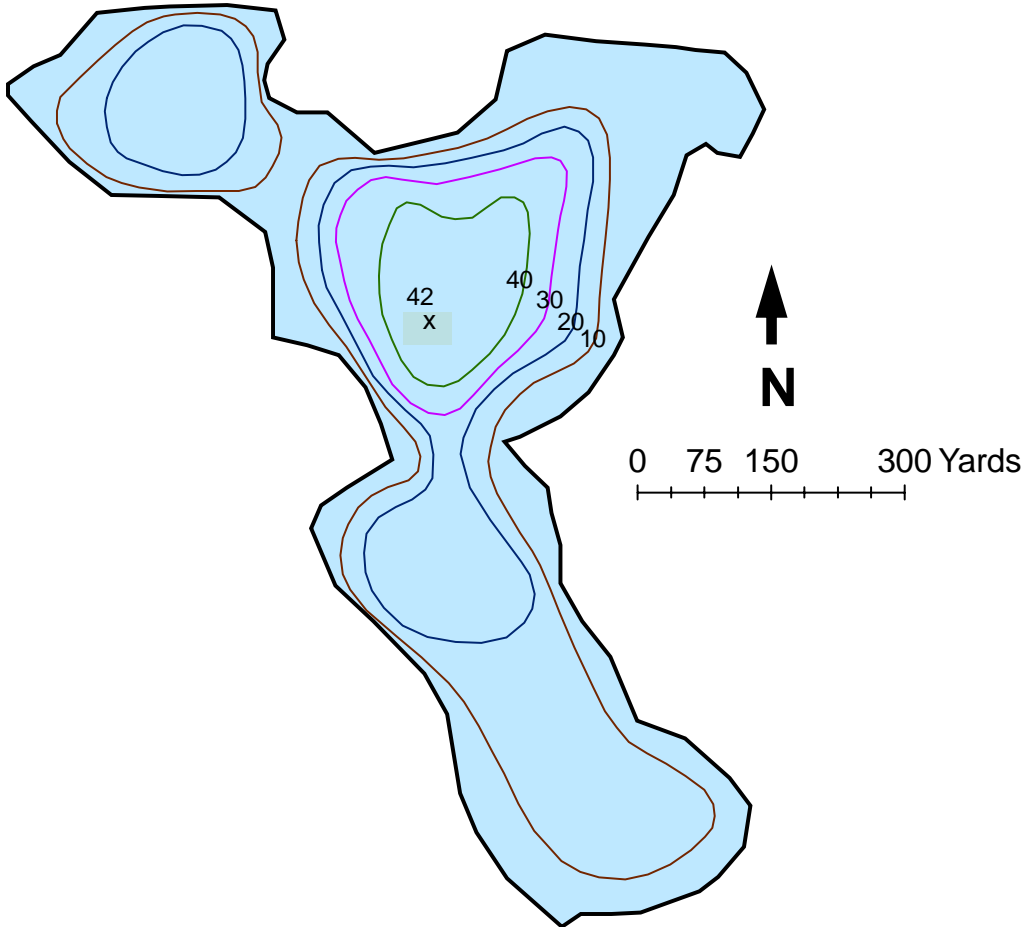




U.S. Fish & Wildlife Service

Kenai Fish & Wildlife Field Office
43655 Kalifornsky Beach Road
Soldotna, AK 99669 907-262-9863

Marten Lake



Surface Acres: 71

Latitude: 60°41.87N

Maximum depth (ft): 42

Longitude: -150°39.21'W

Shoreline Length (ft): 3326

Access: Swan Lake Canoe Trail

Most recent fish survey: 1974

Sport fish species observed: rainbow trout, coho salmon, Arctic char, longnose sucker

Lake Public Access: Mile 83.4 Sterling Hwy, 16 miles north on Swanson River Road, 3.5 miles east on Swan Lake Road. West Entrance to Swan Lake Canoe Trails has parking area with toilets and trailhead register. Portage to and paddle across Canoe Lake #1, #2, and #3, Contact and Marten Lakes. Swan Lake Canoe Area is designated wilderness. No motorized equipment or vehicles. Please pack out litter.