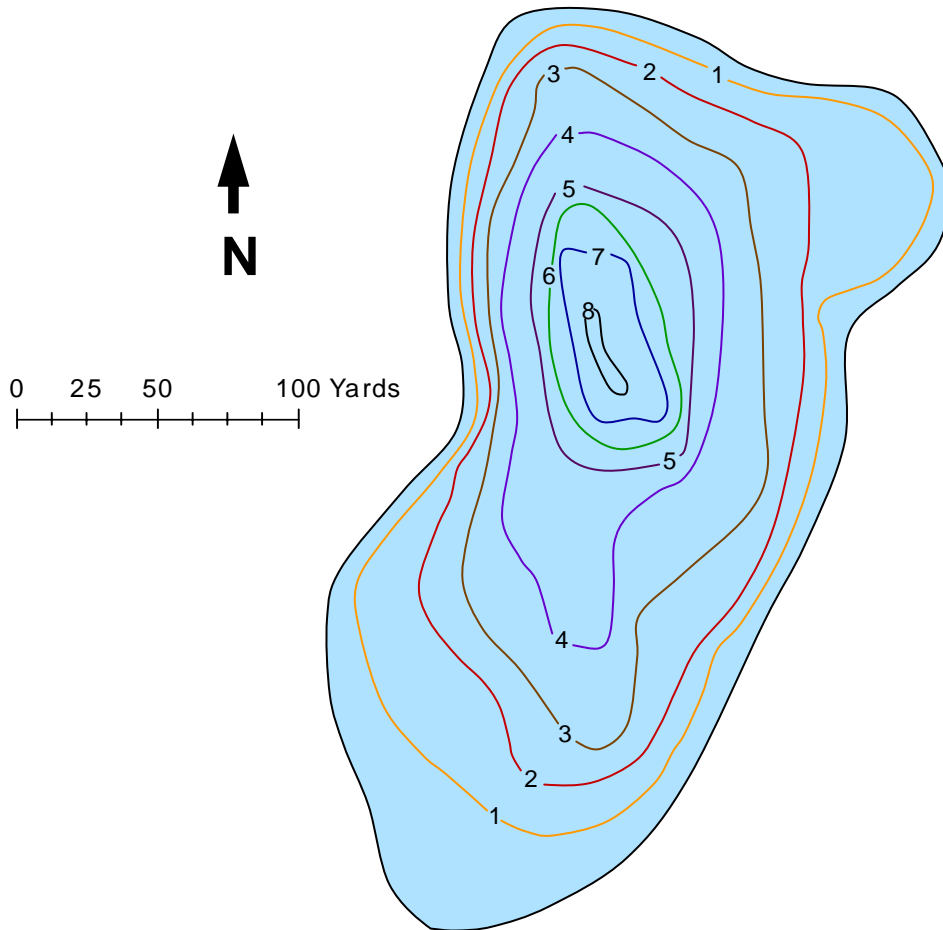




U.S. Fish & Wildlife Service

Kenai Fish & Wildlife Field Office
43655 Kalifornsky Beach Road
Soldotna, AK 99669 907-262-9863

Lower Fuller Lake



Surface Acres: 12

Maximum depth (ft): 8

Shoreline Length (ft): 899

Most recent fish survey: 1976

Sport fish species observed: Arctic grayling

Latitude: 60°30.52'N

Longitude: -150° 3.47'W

Access: Trail

Lake Public Access: Mile 57.1 Sterling Hwy, 1.8 miles north on Fuller Lakes Trail.