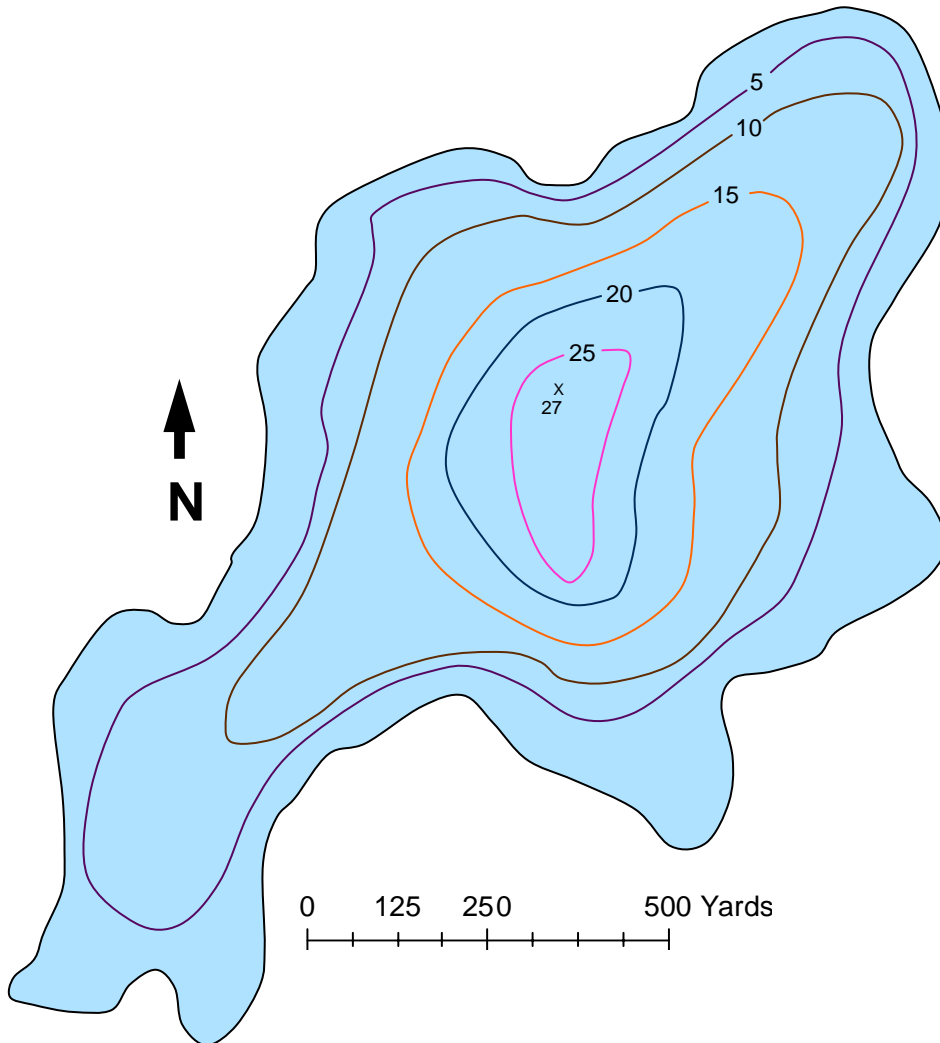




U.S. Fish & Wildlife Service

Kenai Fish & Wildlife Field Office
43655 Kalifornsky Beach Road
Soldotna, AK 99669 907-262-9863

Grus Lake



Surface Acres: 193

Maximum depth (ft): 27

Shoreline Length (ft): 4,741

Most recent fish survey: 2000

Sport fish species observed: Arctic char

Latitude: 60°46.44'N

Longitude: -150°40.39'W

Access: Remote

Lake Public Access: Remote location in Swanson River watershed.