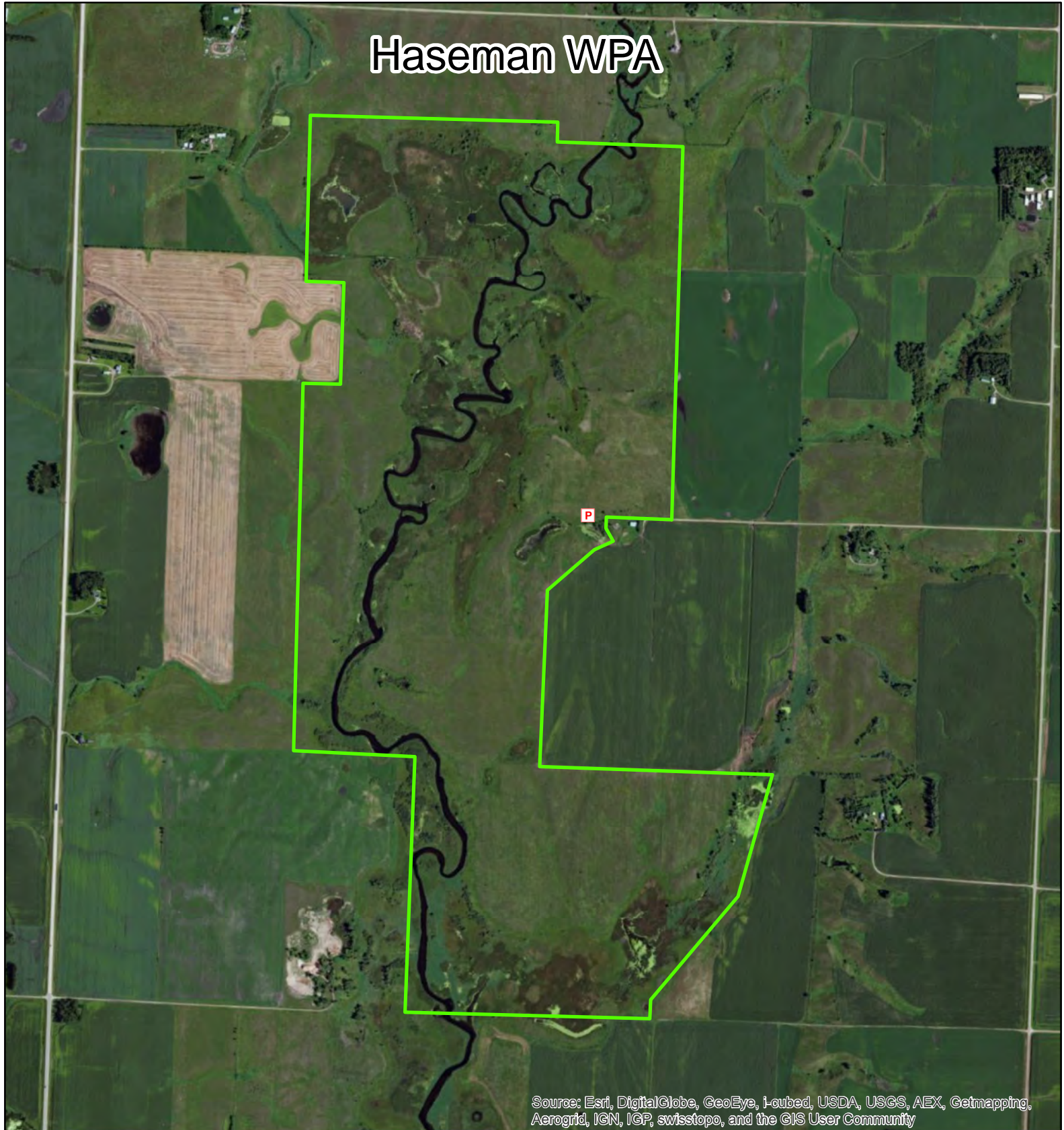






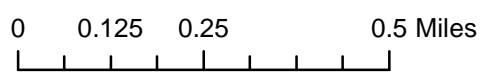



# Haseman WPA



Source: Esri, DigitalGlobe, GeoEye, i-cubed, USDA, USGS, AEX, Getmapping, Aerogrid, IGN, IGP, swisstopo, and the GIS User Community

|  |                            |
|--|----------------------------|
|  | Waterfowl Production Areas |
|  | Boat Access                |
|  | Crossing                   |
|  | Field Approach             |
|  | Parking Area               |
|  | Other                      |



Grant County  
US Fish and Wildlife Service  
Fergus Falls Wetland Management District  
Date: 1/14/2015