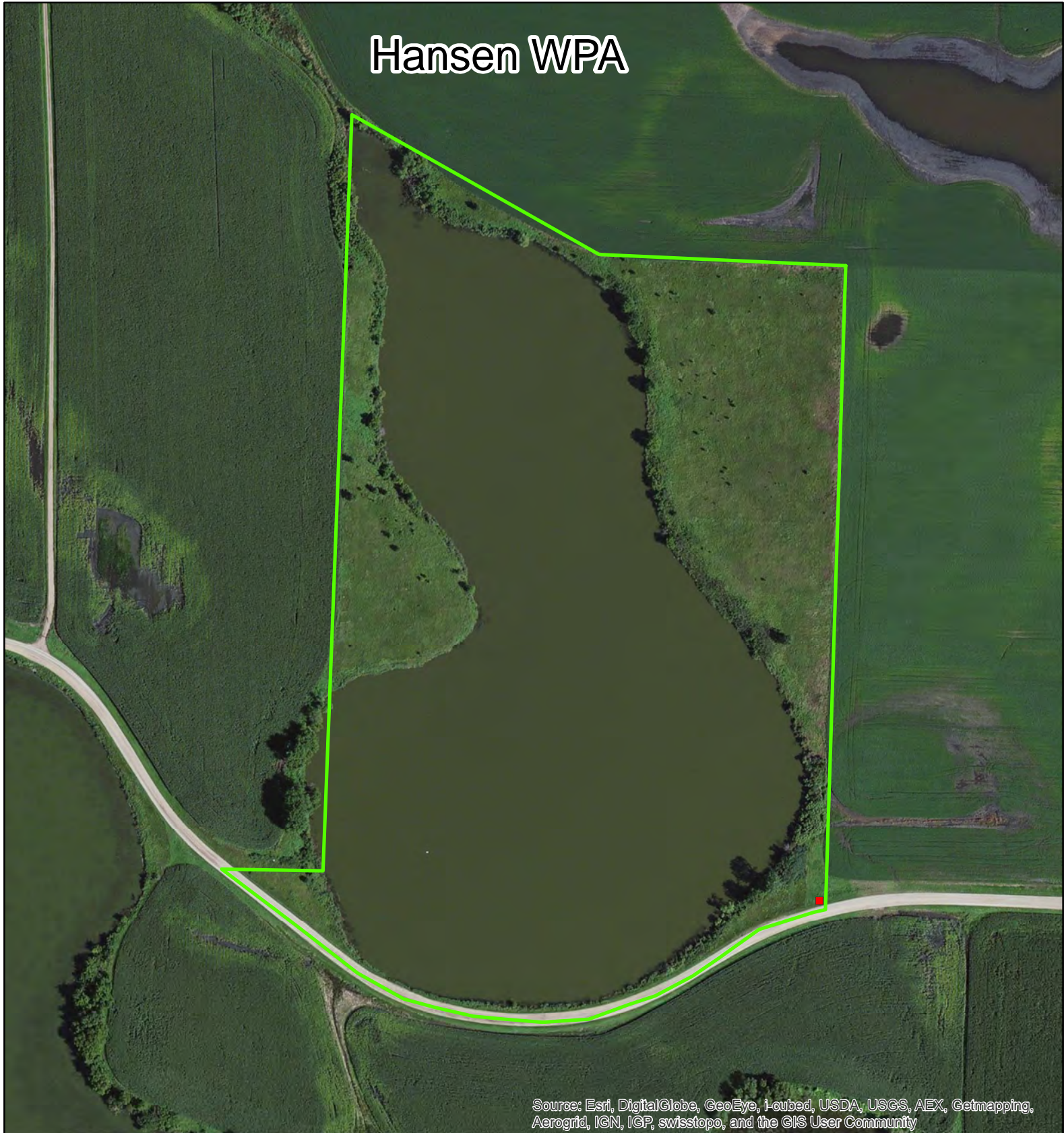






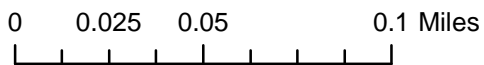



# Hansen WPA



Source: Esri, DigitalGlobe, GeoEye, i-cubed, USDA, USGS, AEX, Getmapping, Aerogrid, IGN, IGP, swisstopo, and the GIS User Community

	Waterfowl Production Areas
	Boat Access
	Crossing
	Field Approach
	Parking Area
	Other



Douglas County  
US Fish and Wildlife Service  
Fergus Falls Wetland Management District  
Date: 1/14/2015