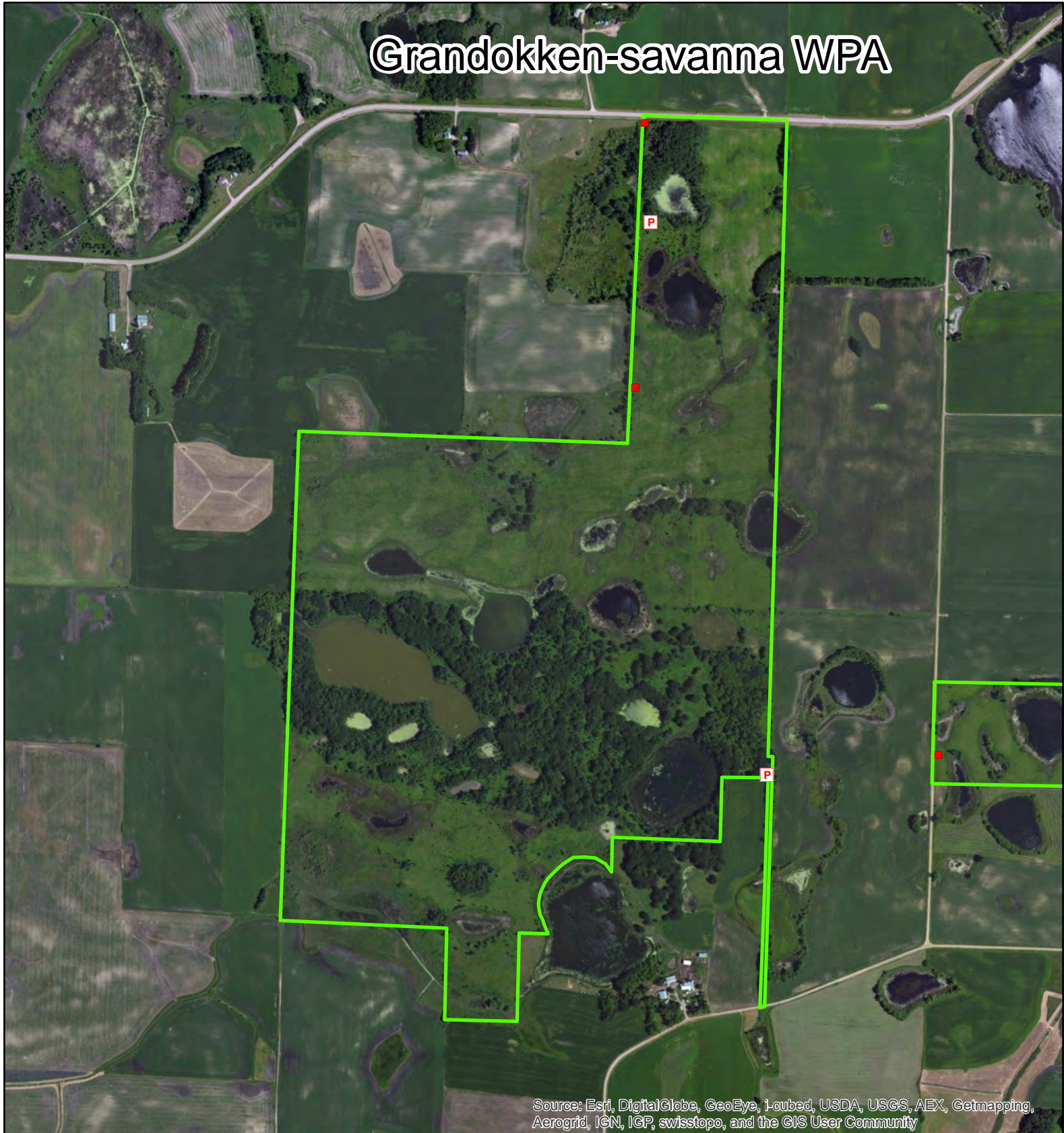


Grandokken-savanna WPA



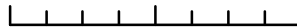
Source: Esri, DigitalGlobe, GeoEye, i-cubed, USDA, USGS, AEX, Getmapping, Aerogrid, IGN, IGP, swisstopo, and the GIS User Community

 Waterfowl Production Areas

-  Boat Access
-  Crossing
-  Field Approach
-  Parking Area
-  Other



0 0.075 0.15 0.3 Miles



Douglas County
US Fish and Wildlife Service
Fergus Falls Wetland Management District
Date: 1/14/2015