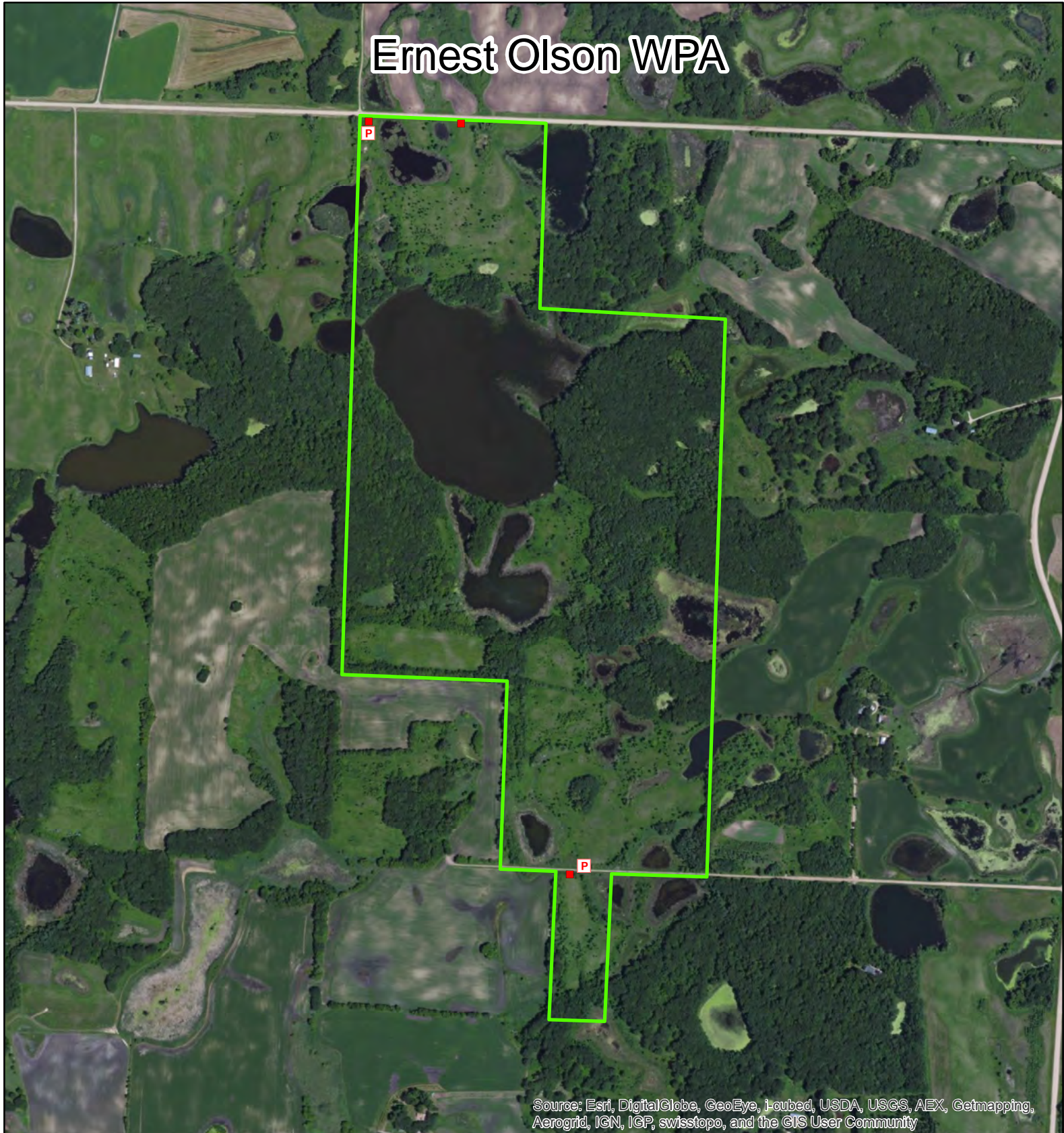










Ernest Olson WPA



Source: Esri, DigitalGlobe, GeoEye, i-cubed, USDA, USGS, AEX, Getmapping, Aerogrid, IGN, IGP, swisstopo, and the GIS User Community

-  Waterfowl Production Areas
 -  Boat Access
 -  Crossing
 -  Field Approach
 -  Parking Area
 -  Other
- 

0 0.075 0.15 0.3 Miles



Douglas County
US Fish and Wildlife Service
Fergus Falls Wetland Management District
Date: 1/14/2015