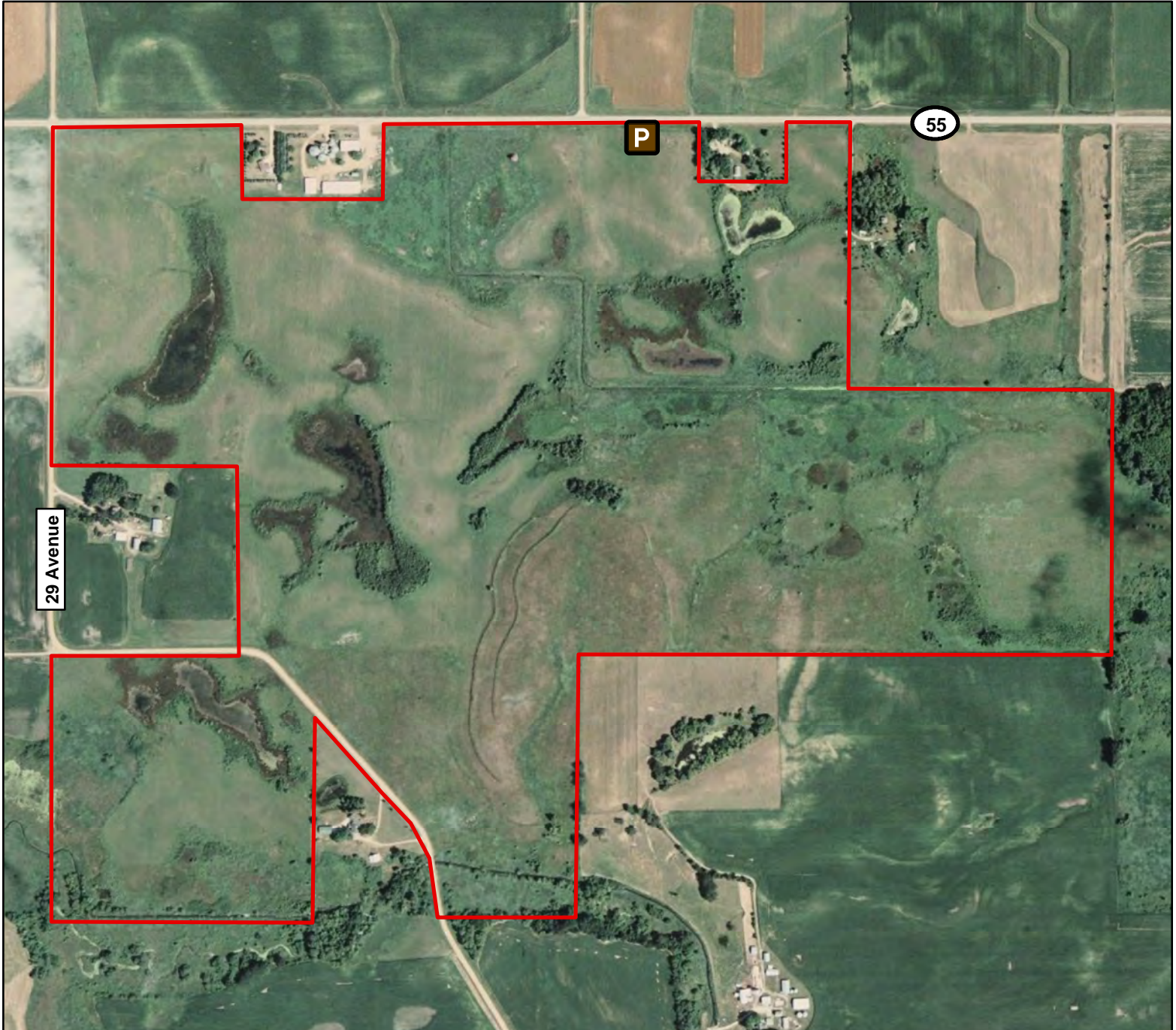




U.S. FISH & WILDLIFE SERVICE

Straight Creek WPA



PARKING LOT LOCATION:

3459 SE 128 Street
Blooming Prairie, MN

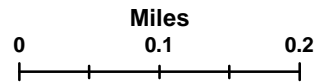
Steele County
T. 105N R. 20W S.13 T. 105N R. 19W S.7
UTM: 15N 486760E 4861478N



Parking Lot



WPA Boundary



You can find additional information using our WPA Mapper (http://gis.fws.gov/WPA_Mapper/),
our Website (<http://www.fws.gov/midwest/minnesotavalley>), or by giving us a call (952-854-5900).

Boundaries shown are approximate only. Please adhere to all posted signs.