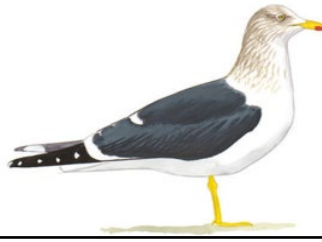


Salt Marsh and Bay Identification Key

Laughing Gull



Herring Gull



Forster's Tern



Dunlin



Lesser Yellowlegs



Red Knot



Ruddy Turnstone



Sanderling



Semipalmated Sandpiper



Short-billed Dowitcher



Great Blue Heron



Great Egret



Willet



American Avocet



Black-necked Stilt



Clapper Rail



Marsh Wren



Seaside Sparrow



Salt Marsh and Bay Identification Key

Belted Kingfisher



Osprey



Bald Eagle



Striped Bass



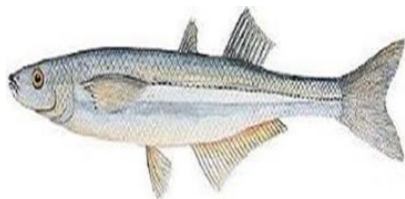
Banded Killifish



Sheepshead Minnow



Atlantic Silverside



Mummichog



Striped Killifish



Northern Harrier



Grass Shrimp



Fiddler Crab



Diamondback Terrapin



Marsh Elder



Groundsel Tree



Smooth Cordgrass



Big Cordgrass



Saltmarsh Hay



Tidal / Estuarine Organisms

Dragonfly Nymph



Water Boatman



Backswimmer



Midge



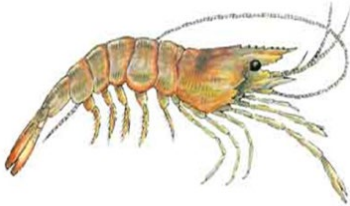
Mosquito larva



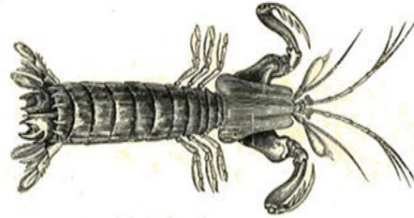
Deerfly larva



Grass Shrimp



Mantis Shrimp



Amphipod



Fiddler Crab



Mud Crab



Blue Crab



Horseshoe Crab



Acorn Barnacle



Skate



Tidal / Estuarine Macroinvertebrates

Marsh Periwinkle



Coffee Bean Snail



Channeled Whelk



Oyster



Ribbed Mussel



Blue Mussel



Surf Clam



Razor Clam



Oligochaete Worm



Ribbon Worm



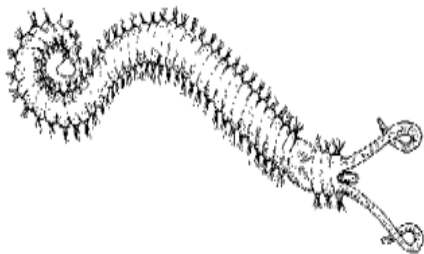
Bamboo Worm



Clam Worm



Mud Worm



Blood Worm



Thread Worm

