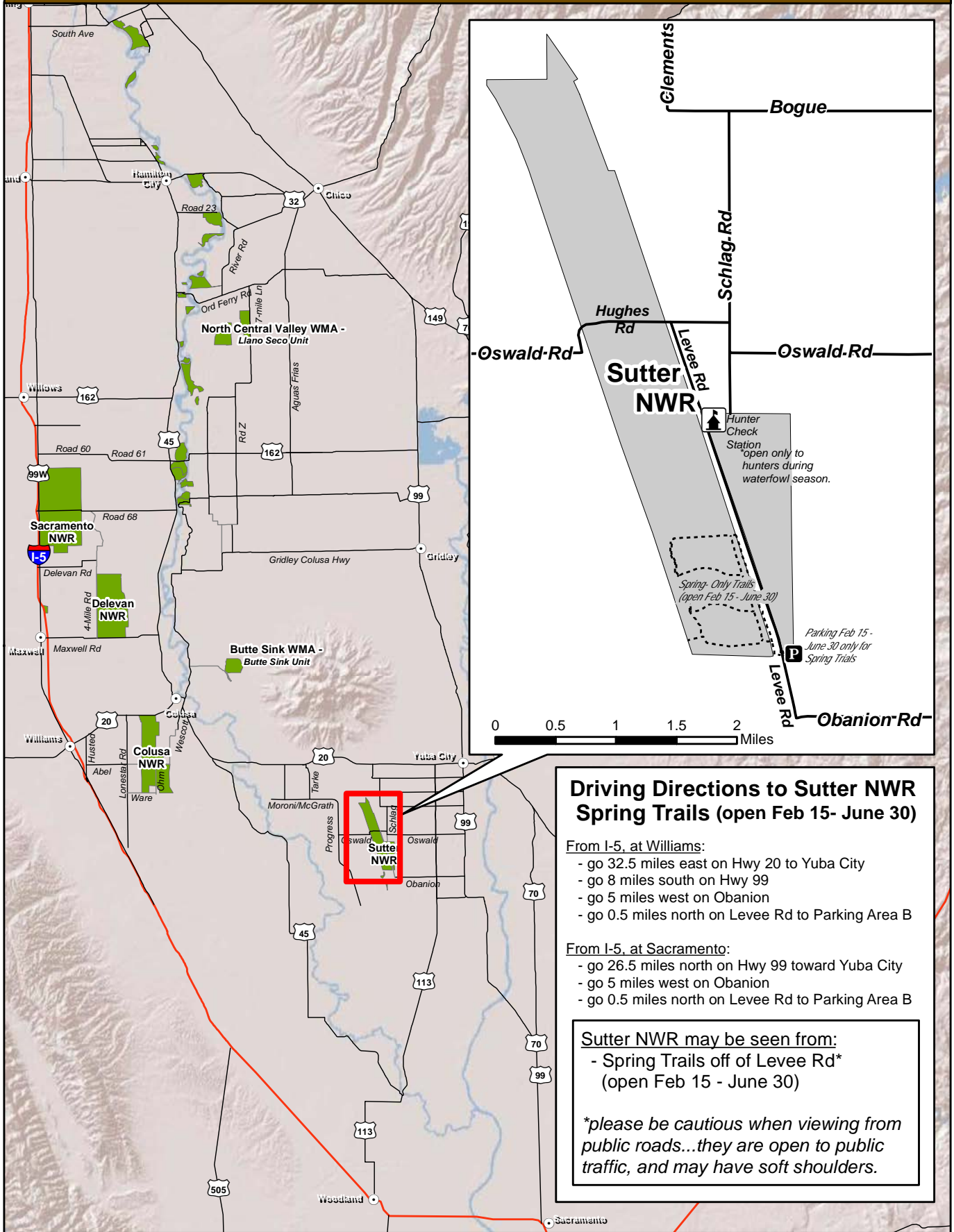


# SPRING TRAILS DIRECTIONS - Sutter National Wildlife Refuge



## Driving Directions to Sutter NWR Spring Trails (open Feb 15- June 30)

- From I-5, at Williams:**
- go 32.5 miles east on Hwy 20 to Yuba City
  - go 8 miles south on Hwy 99
  - go 5 miles west on Obanion
  - go 0.5 miles north on Levee Rd to Parking Area B
- From I-5, at Sacramento:**
- go 26.5 miles north on Hwy 99 toward Yuba City
  - go 5 miles west on Obanion
  - go 0.5 miles north on Levee Rd to Parking Area B

**Sutter NWR may be seen from:**

- Spring Trails off of Levee Rd\* (open Feb 15 - June 30)

*\*please be cautious when viewing from public roads...they are open to public traffic, and may have soft shoulders.*



# HUNTER CHECK STATION DIRECTIONS -Sutter National Wildlife Refuge

