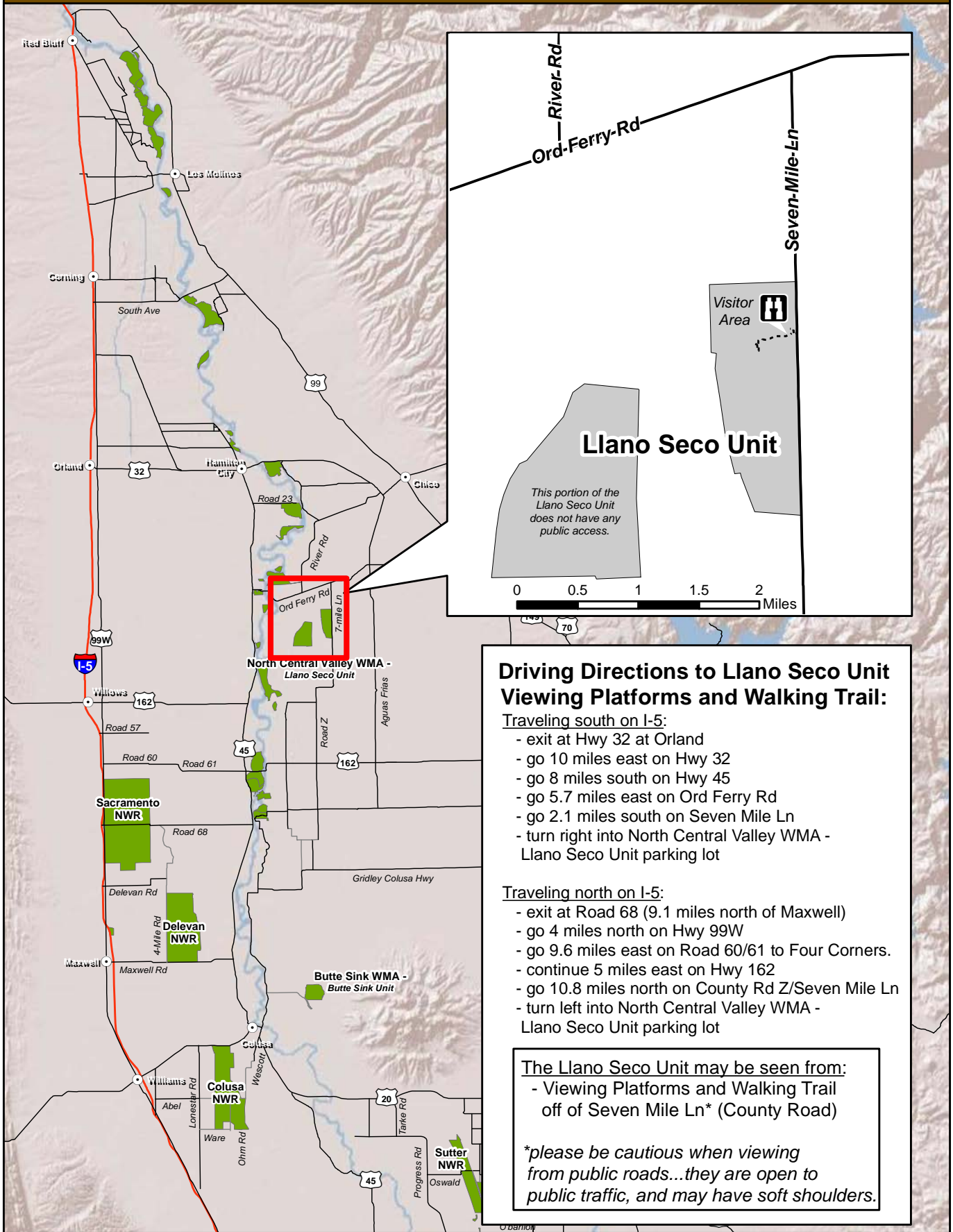


# VISITOR AREA DIRECTIONS - Llano Seco Unit, N. Central Valley WMA



## Driving Directions to Llano Seco Unit Viewing Platforms and Walking Trail:

### Traveling south on I-5:

- exit at Hwy 32 at Orland
- go 10 miles east on Hwy 32
- go 8 miles south on Hwy 45
- go 5.7 miles east on Ord Ferry Rd
- go 2.1 miles south on Seven Mile Ln
- turn right into North Central Valley WMA - Llano Seco Unit parking lot

### Traveling north on I-5:

- exit at Road 68 (9.1 miles north of Maxwell)
- go 4 miles north on Hwy 99W
- go 9.6 miles east on Road 60/61 to Four Corners.
- continue 5 miles east on Hwy 162
- go 10.8 miles north on County Rd Z/Seven Mile Ln
- turn left into North Central Valley WMA - Llano Seco Unit parking lot

### The Llano Seco Unit may be seen from:

- Viewing Platforms and Walking Trail off of Seven Mile Ln\* (County Road)

*\*please be cautious when viewing from public roads...they are open to public traffic, and may have soft shoulders.*

