

Snowy Owl Pop-up Activity

In this challenging activity, most children will need adult help. Follow the directions below to create a three-dimensional landscape diorama by folding and gluing together the cut out shapes on this page.

Cut

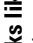


A brown lemming hides from a snowy owl on the Arctic Refuge coastal plain. The foothills and mountains of the Brooks Range appear in the background.

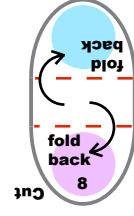
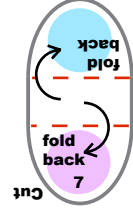
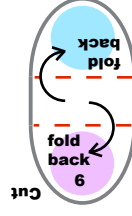
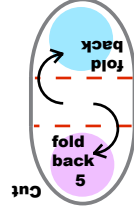
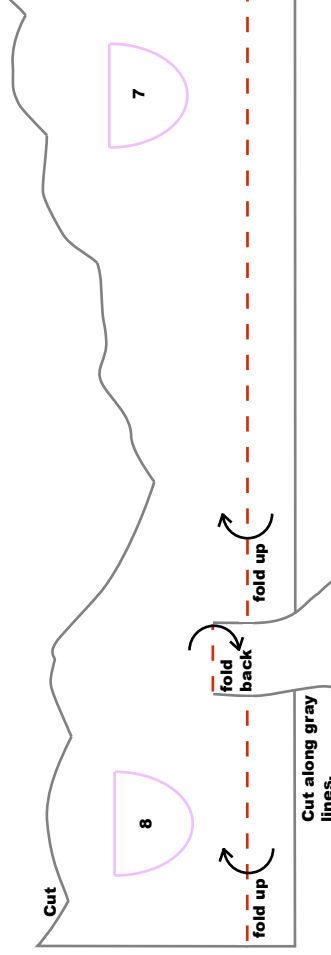
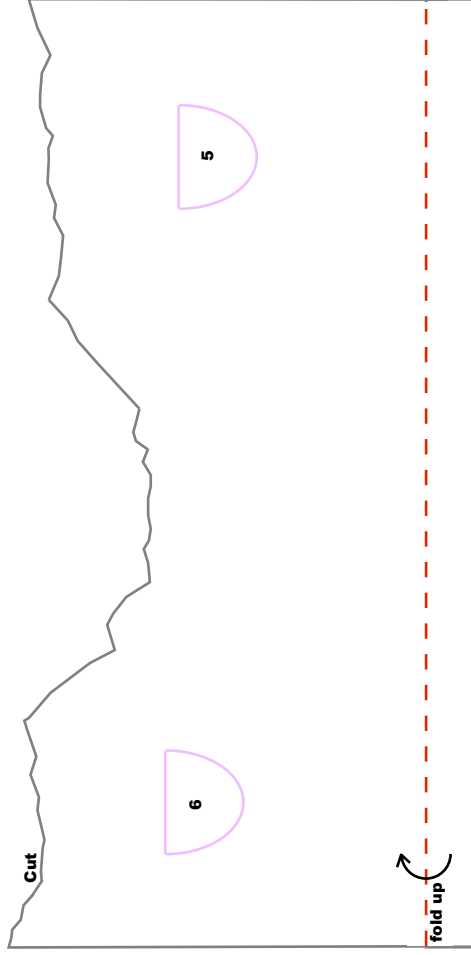
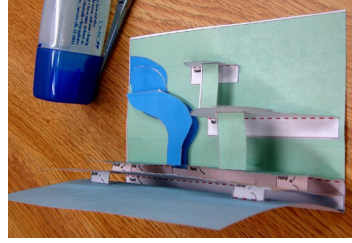
Lemming numbers change greatly from year to year. Snowy owls only nest on the Arctic Refuge coastal plain in years when lemming numbers are very high there. When there are few lemmings in the Refuge, the owls nest in other places in the Arctic where there are lots of lemmings.



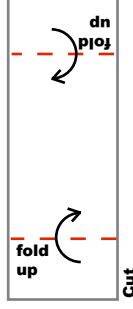
Directions:

We only have room for brief instructions here. You can follow step-by-step illustrated directions on the web at <http://arctic.fws.gov/popsodirections.htm>. Print more copies of this pop-up at <http://arctic.fws.gov/popsnowyowl.htm>.

- 1) Cut out each piece of the snowy owl pop-up on the gray outlines.
- 2) Fold all parts along dotted red lines, following fold directions.
- 3) Glue each pink area (looks like this: ) to its pink outline (looks like this: ), matching each number and shape.
- 4) Flatten all pop-ups away from the centerfold. Flatten tabs back toward the centerfold (leave folds in "river"), and apply glue to all blue ends (looks like this: ).
- 5) Close card to attach blue ends and complete pop-up.



Cut along gray lines.



Cut

