



Julia Butler Hansen Refuge for the Columbian White-tailed Deer

2020-2021

REFUGE WATERFOWL HUNTING REGULATIONS

(SEE STATE REGULATIONS FOR MORE INFORMATION)



The Julia Butler Hansen Refuge for the Columbian White-tailed Deer (Refuge) contains over 6,000 acres of pastures, forested tidal swamps, brushy woodlots, marshes and sloughs along the Columbia River in both Washington and Oregon State. It was established in 1971 specifically to protect and manage Columbian white-tailed deer.

Hunting of geese, ducks, coots, and snipe is permitted in specific units of the Refuge in accordance with federal and state hunting regulations. Areas open to hunting include portions of the shorelines, tidelands and sloughs of Price and Hunting Islands in Washington State and Wallace and Crims Islands in Oregon State. All other Refuge units including the Mainland and Tenasillahe Island Units are closed to waterfowl hunting.

REFUGE INFORMATION

- **CAUTION:** Hunters are cautioned to pay attention to tidal fluctuations when hunting tidal areas.
- **HOURS:** The Refuge is open daily from dawn to dusk. Hunting access is from 1 1/2 hours before legal sunrise until 1 1/2 hours after legal sunset.
- **NONTOXIC SHOT REQUIRED:** All hunters are required to use only federally approved nontoxic shot while waterfowl hunting. Use or possession of lead shot is prohibited.
- **SAFETY ZONES:** You may not shoot or discharge any hunting firearm from, across, or along a public highway, designated route of travel, road, road shoulder, road embankment, or designated parking area.
- **BAIT:** We prohibit distribution of bait & hunting over bait.
- **FOOT TRAFFIC ONLY:** All island units of the Refuge are open to foot traffic only unless otherwise specified.
- **BOATING:** Hunting, Price, Wallace and Crims Islands are accessible only by boat. Tidal flows and fluctuations, and strong winds can make boating difficult and sometimes dangerous. In Washington, launch ramps are located at the Cathlamet Marina, at mile marker 30 off of State Highway 4, adjacent to Skamokawa Vista Park and at Willow Grove west of Longview. In Oregon, boat launch sites are located at Aldritch Point near the Brownsmead area and at the John Day boat ramp east of Astoria.
- **BLINDS AND PERSONAL PROPERTY:** Temporary blinds may be constructed, but they must be available to everyone on a first-come, first-served basis. We prohibit permanent blinds. You must remove all personal property, including decoys and boats, 1 hour after legal sunset.
- **MOTORIZED EQUIPMENT:** All-terrain vehicles (ATVs), dirt bikes, and chain saws are prohibited on Refuge lands.
- **CAMPING/FIRES:** Camping, overnight use and fires are prohibited on all Refuge lands.
- **DOGS:** Dogs are prohibited on all Refuge units except certified assistance animals and dogs used for hunting waterfowl. Dogs must remain in the control of their handlers at all times.
- **REMOVAL OF ITEMS PROHIBITED:** Collecting and removing ANY archaeological, historical, or natural material such as plants, mushrooms, berries, or antler sheds is prohibited.
- **ALCOHOL:** The use or possession of alcoholic beverages while hunting is prohibited.

WASHINGTON STATE HUNTING DATES (HUNTING/PRICE ISLANDS)

DUCK & COOT (STATEWIDE)

SEPT 26 (YOUTH HUNTING ONLY)

OCT 17 – 25 & OCT 28 – JAN 31 (REGULAR SEASON)

NOV 7 – JAN 31 (SCAUP SEASON)

FEB 6 (YOUTH, VETERANS AND ACTIVE MILITARY)

GOOSE (AREA 2 - INLAND)

SEPT 5 – 13 (CANADA GOOSE EARLY SEASON)

SEPT 26 (YOUTH HUNTING ONLY)

OCT 17–NOV 1 (EVERYDAY)

NOV 25 – JAN 17 & FEB 13 – MAR 10 (SAT, SUN, AND WED ONLY)

FEB 6 (YOUTH, VETERANS AND ACTIVE MILITARY)

DUSKY CANADA GOOSE SEASON IS CLOSED

SNIPE (STATEWIDE)

OCT 17 – 25 & OCT 28 – JAN 31

HUNTING & PRICE ISLANDS

The Refuge-owned shorelines, tidelands and interior sloughs of Hunting and Price Islands are open to waterfowl hunting, except where it parallels Steamboat Slough (see map), in accordance with Federal and Washington State Regulations. The eastern tip of Hunting Island (approx. 150 acres) is privately owned and the southern half of Price Island (approx. 160 acres) is owned by Wahkiakum County. Please check Refuge map for approximate boundaries. Access to Hunting and Price Islands is by boat only.

OREGON STATE HUNTING DATES (CRIMS/WALLACE ISLANDS)

DUCK & COOT (ZONE 1)

SEPT 26 – 27 (YOUTH HUNTING ONLY)

OCT 17 – NOV 1 & NOV 5 – JAN 31 (REGULAR SEASON)

NOV 7 – JAN 31 (SCAUP SEASON)

FEB 6 (VETERANS AND ACTIVE MILITARY)

GOOSE (NW PERMIT GOOSE ZONE)

SEPT 12 – 20 (CANADA GOOSE EARLY SEASON)

OCT 24 – NOV 1 & NOV 21 – JAN 13 & FEB 6–MAR 10 (REGULAR GOOSE SEASON, ALL DAYS OF THE WEEK ARE OPEN TO HUNTING)

DUSKY CANADA GOOSE SEASON IS CLOSED

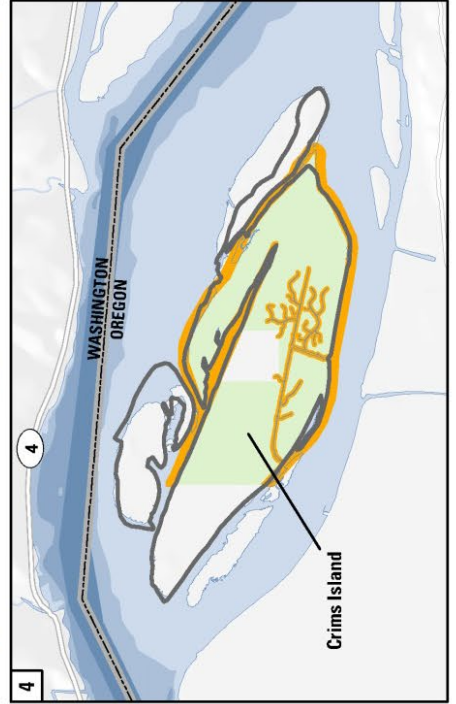
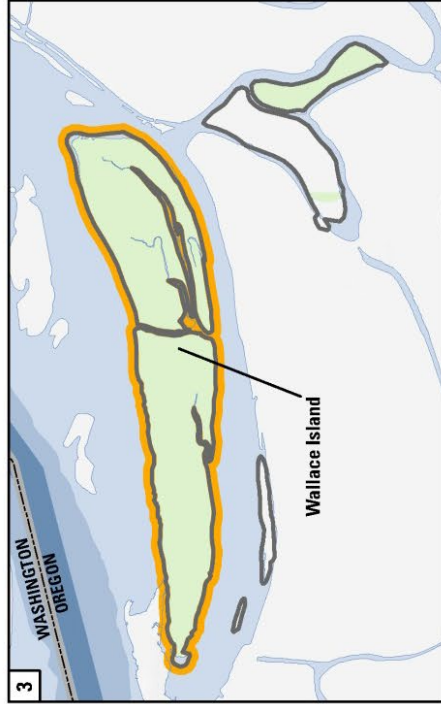
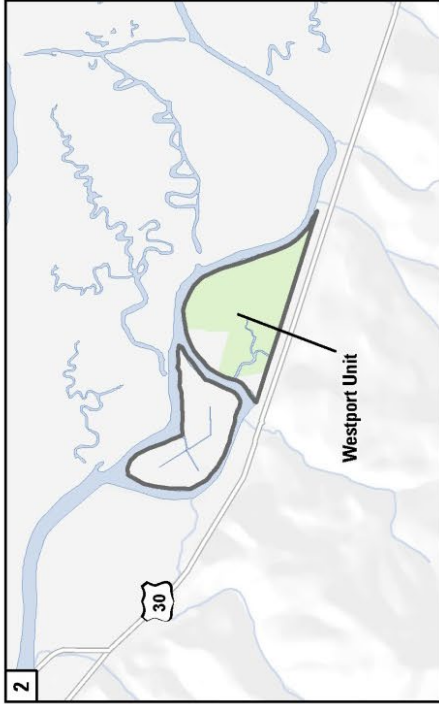
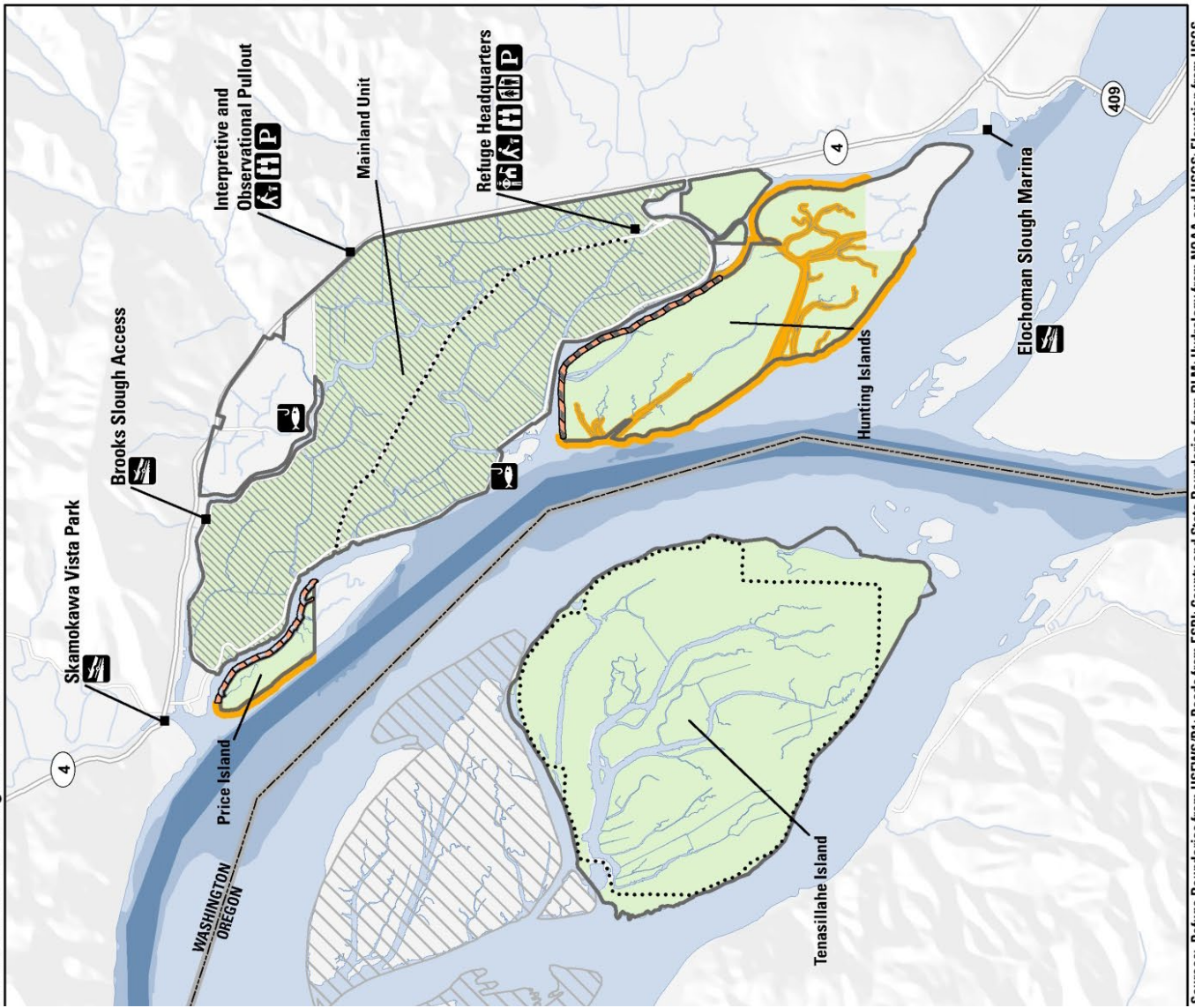
SNIPE (ZONE 1)

NOV 7–FEB 21

WALLACE & CRIMS ISLANDS

The Refuge-owned shorelines, tidelands and interior sloughs of Wallace and Crims Islands are open to waterfowl hunting, in accordance with Federal and Oregon State Regulations. Please note that several parts of Crims Island are privately owned, including the western tip of the island (approx. 90 acres) and a 40 acre section of the north part of the island. See the Refuge map for approximate boundaries. Access to Wallace and Crims Islands is by boat on.

Julia Butler Hansen Refuge for the Columbian White-tailed Deer - Hunt Plan



Legend

Public Use

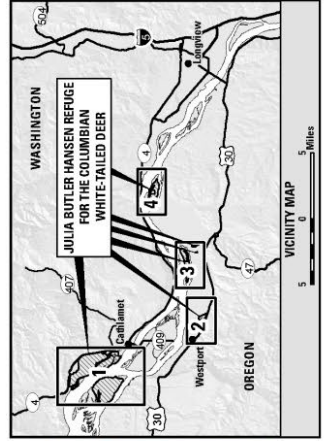
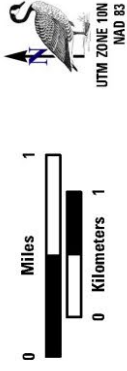
- Elk Hunting by Special Permit
- Waterfowl Hunting Along Shoreline and Interior Sloughs
- Shoreline Hunting Closure
- Walking Trail (Seasonally Closed)
- Refuge Headquarters
- Interpretive Kiosk
- Wildlife Viewing Area
- Restroom
- Parking
- Fishing Access
- Boat Launch

Refuge Land Status

- Approved Boundary
- Refuge Managed Lands
- Lewis and Clark National Wildlife Refuge

Waterfowl hunting is permitted on the open shorelines of Hunting, Crims, Wallace and Price Islands, except the exterior shorelines of Price and Hunting Islands where it parallels Steamboat Slough.

Waters around the refuge are open to fishing in accordance with state regulations. Bank fishing is permitted along open shorelines. Interior sloughs in all refuge units are closed to fishing.



Julia Butler Hansen Refuge for Columbian White-tailed Deer

46 Steamboat Slough Road, Cathlamet, WA 98612

Phone: (360) 795-3915

Email: willapa@fws.gov

Website: www.fws.gov/refuge/julia_butler_hansen

Sources: Refuge Boundaries from USFWS/R1; Roads from ESRI; County and State Boundaries from BLM; Hydrology from NOAA and USGS; Elevation from USGS