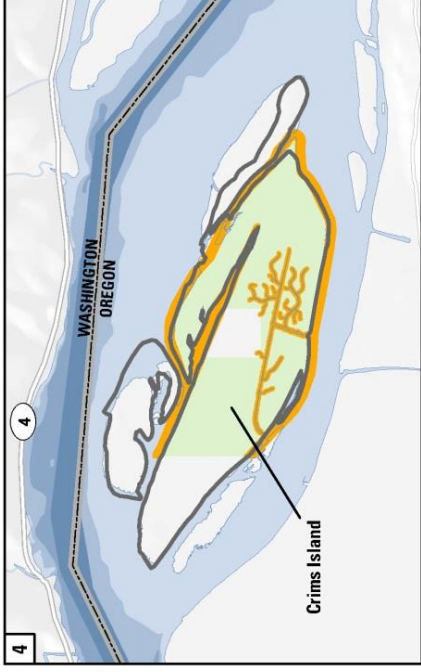
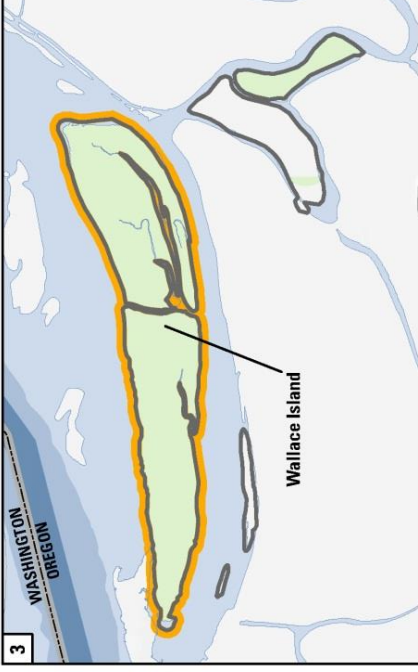
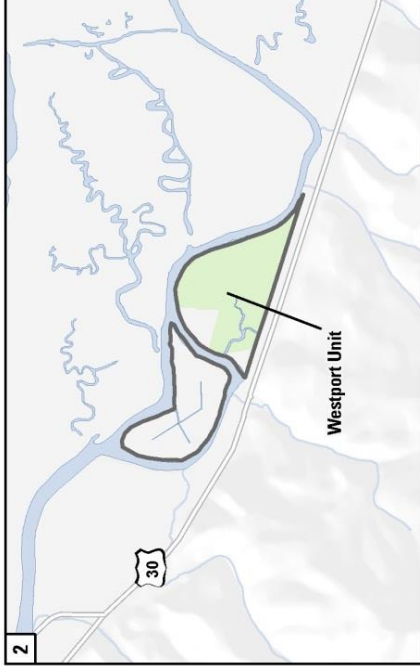
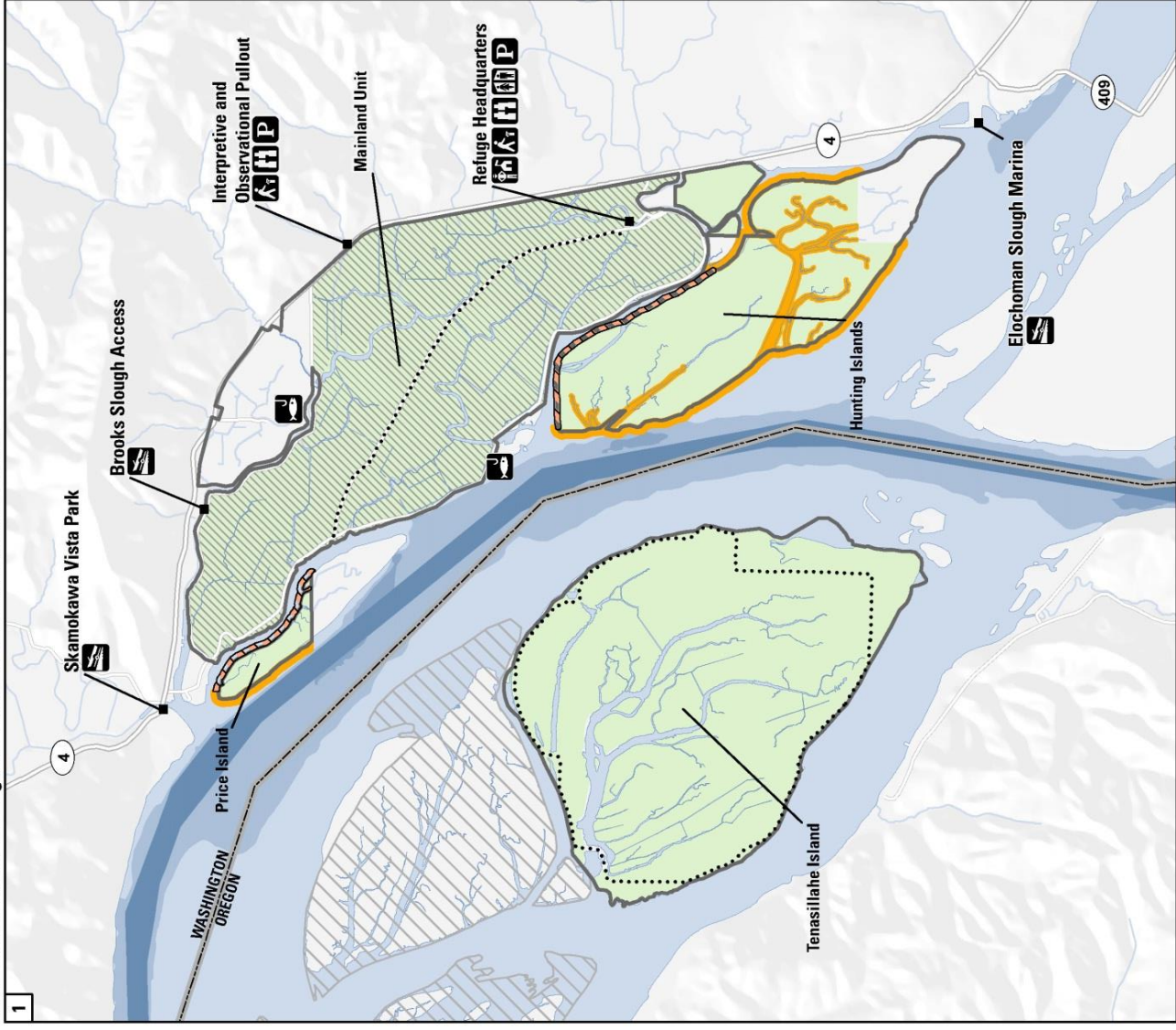


# Julia Butler Hansen Refuge for the Columbian White-tailed Deer - Hunt Plan



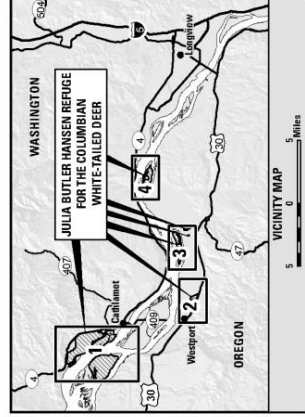
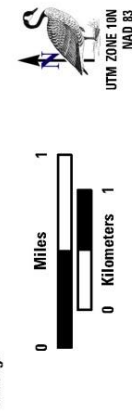
- Legend**
- Public Use**
- Elk Hunting by Special Permit
  - Waterfowl Hunting Along Shoreline and Interior Sloughs
  - Shoreline Hunting Closure
  - Walking Trail (Seasonally Closed)

- Refuge Headquarters
- Interpretive Kiosk
- Wildlife Viewing Area
- Restroom
- Parking
- Fishing Access
- Boat Launch

- Refuge Land Status**
- Approved Boundary
  - Refuge Managed Lands
  - Lewis and Clark National Wildlife Refuge

Waterfowl hunting is permitted on the open shorelines of Hunting, Crims, Wallace and Price Islands, except the exterior shorelines of Price and Hunting Islands where it parallels Steamboat Slough.

Waters around the refuge are open to fishing in accordance with state regulations. Bank fishing is permitted along open shorelines. Interior sloughs in all refuge units are closed to fishing.



Data Sources: Refuge Boundaries from USFWS/R1; Roads from ESRI; County and State Boundaries from BLM; Hydrology from NOAA and USGS; Elevation from USGS