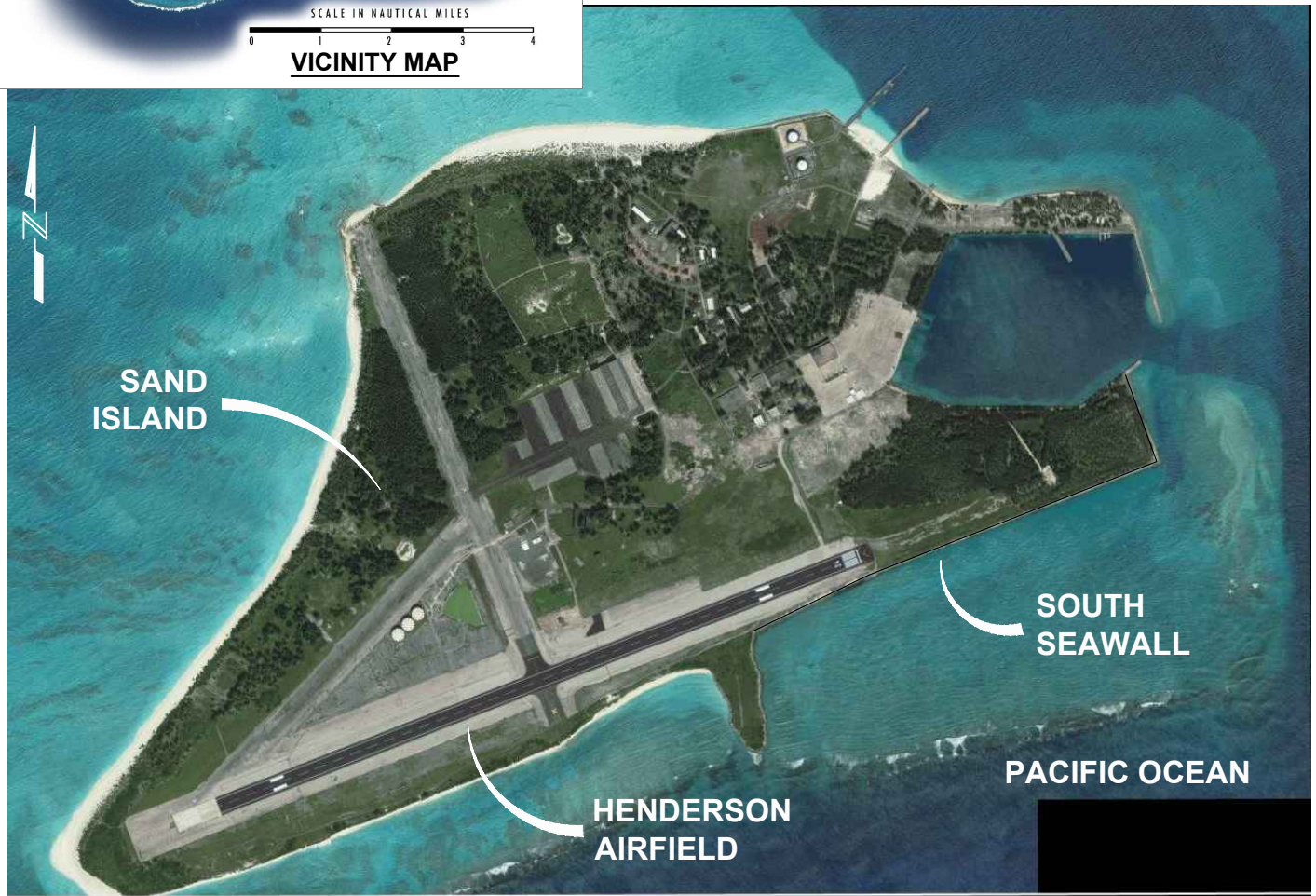


TIDAL INFO:

(STA. 1619910, SAND ISLAND)

HIGHEST ASTRONOMICAL TIDE (HAT)	+1.66 ft.
MEAN HIGH WATER (MHW)	+1.08 ft.
MEAN LOWER LOW WATER (MLLW)	00.00 ft.



PURPOSE:
 PROTECT REFUGE
 AIRFIELD RESOURCES
 FROM EROSION

DATUM: 0.0' M.L.L.W.

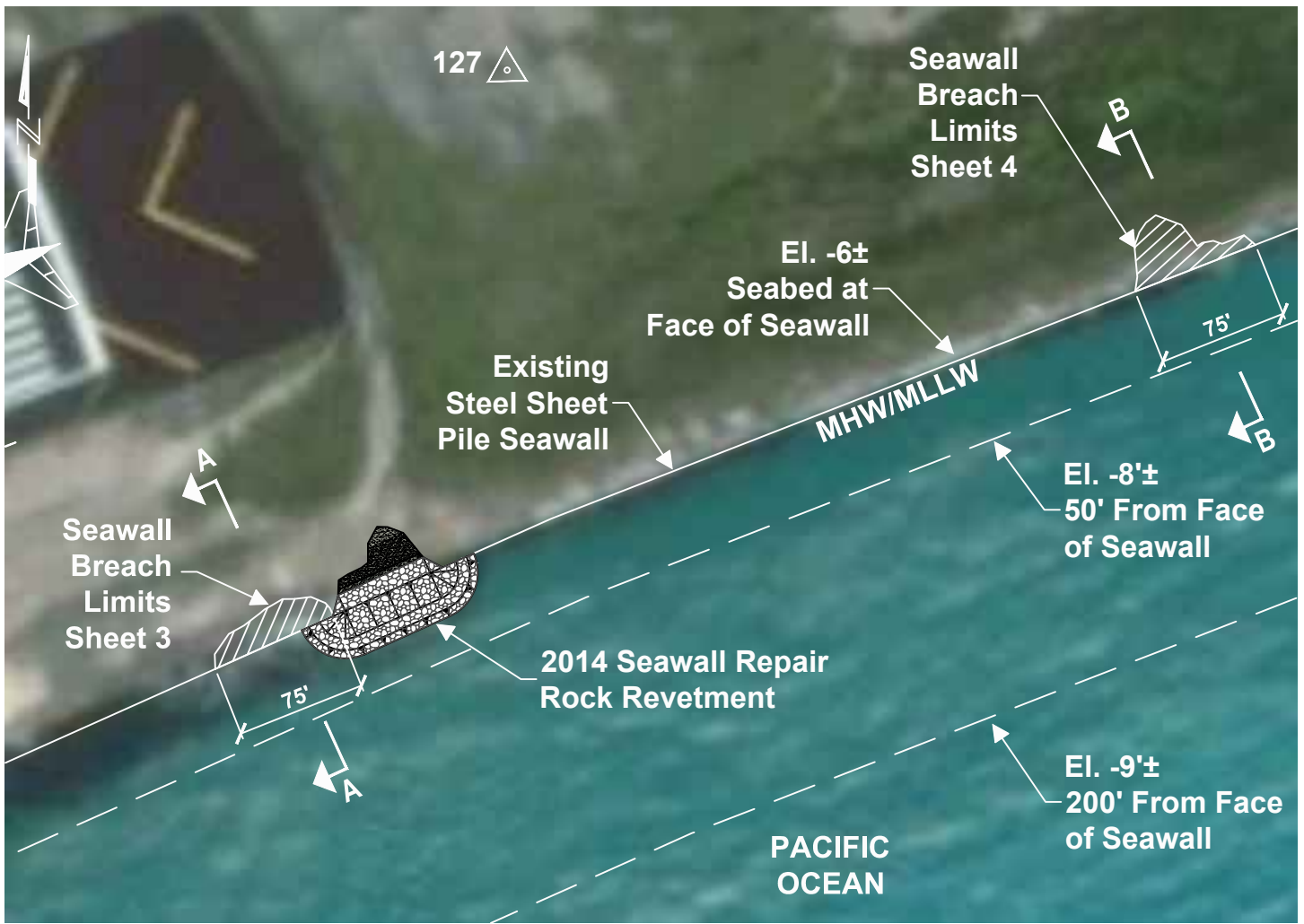
ADJACENT PROPERTY OWNERS:
 USFWS

LOCATION:
 LATITUDE: 28° 12' 17.71"N
 LONGITUDE: 177° 22' 09.55"W

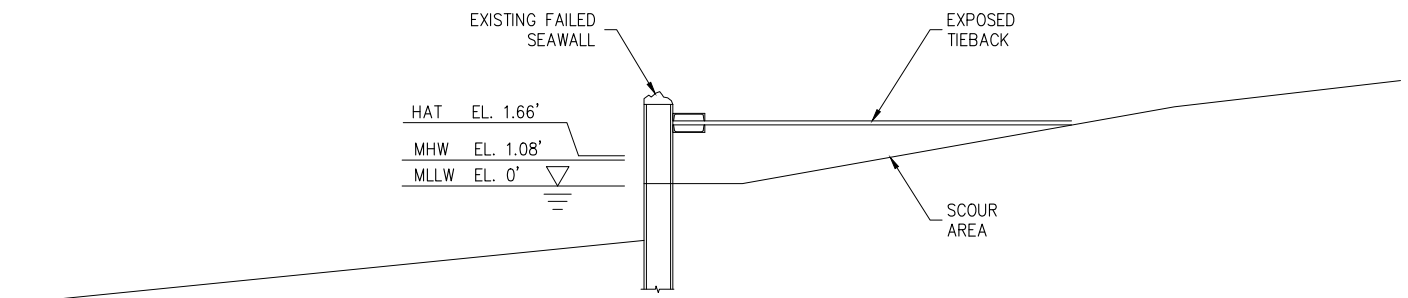
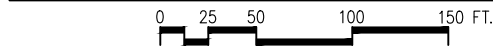
**HENDERSON FIELD
 SEAWALL LONG-TERM
 MAINTENANCE PROJECT
 VICINITY AND
 LOCATION MAPS**

USFWS MIDWAY ATOLL NWR
 1082 MAKEPONO ST.
 HONOLULU, HI 96819

PROPOSED:
 REPLACE FAILING SECTIONS
 OF SEAWALL W/ REVETMENT
IN: PACIFIC OCEAN
AT: SAND ISLAND, MIDWAY ATOLL
 NATIONAL WILDLIFE REFUGE
APPLICATION BY:
 USFWS MIDWAY ATOLL NWR



EXAMPLE EXISTING CONDITIONS PLAN VIEW



EXISTING SEAWALL SECTION

PURPOSE:

PROTECT REFUGE AIRFIELD RESOURCES FROM EROSION

DATUM: 0.0' M.L.L.W.

ADJACENT PROPERTY OWNERS:

USFWS

LOCATION:

LATITUDE: 28° 12' 17.71"N
LONGITUDE: 177° 22' 09.55"W

HENDERSON FIELD SEAWALL LONG-TERM MAINTENANCE PROJECT

EXISTING CONDITIONS

USFWS MIDWAY ATOLL NWR
1082 MAKEPONO ST.
HONOLULU, HI 96819

PROPOSED:

REPLACE FAILING SECTIONS OF SEAWALL W/ REVETMENT

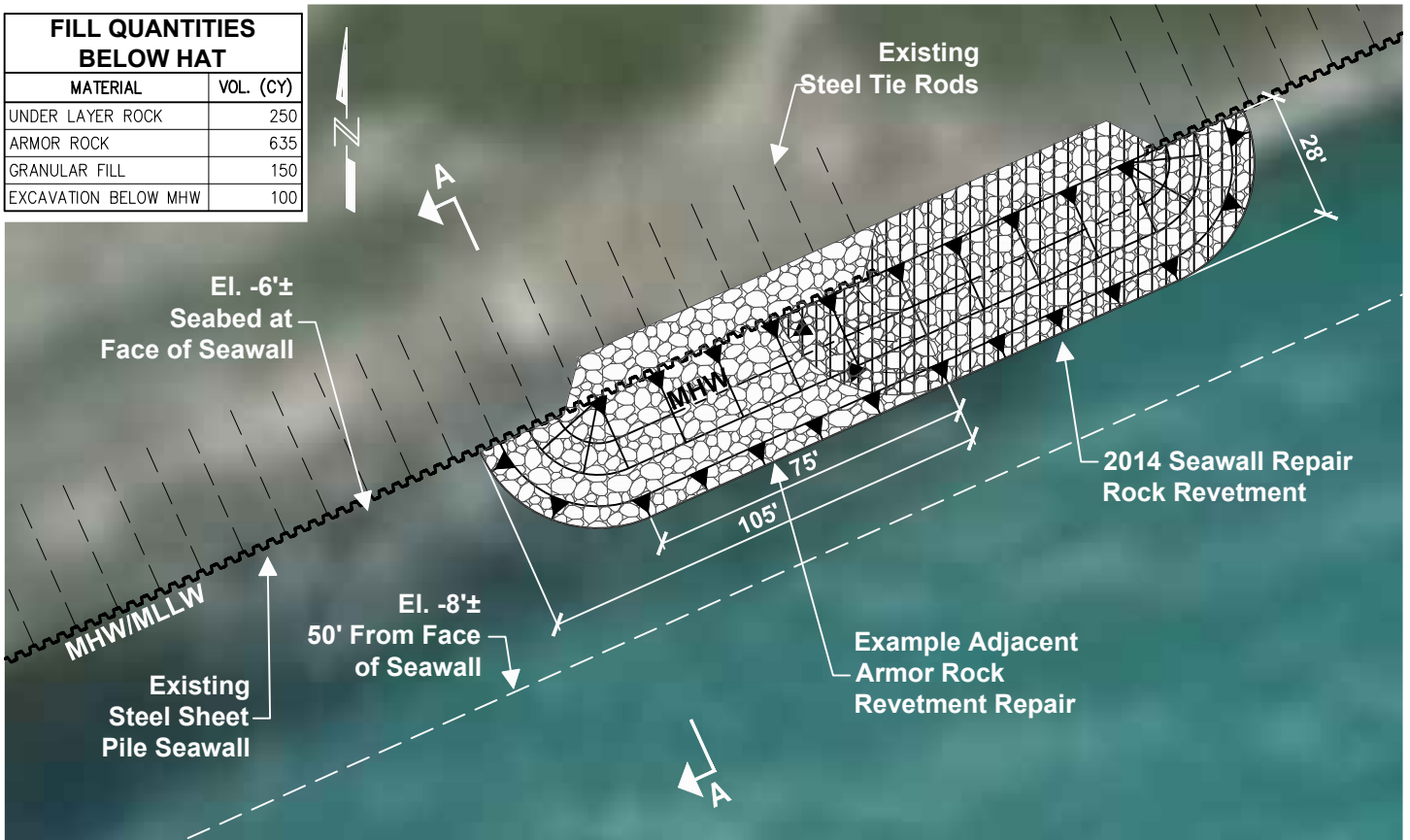
IN: PACIFIC OCEAN

AT: SAND ISLAND, MIDWAY ATOLL NATIONAL WILDLIFE REFUGE

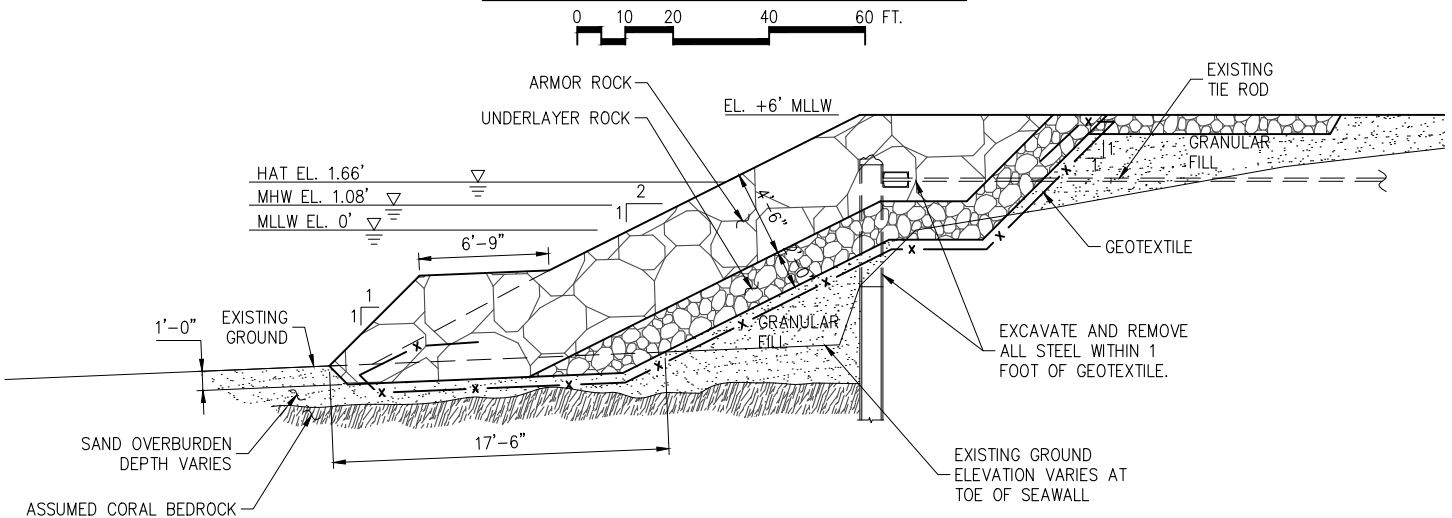
APPLICATION BY:

USFWS MIDWAY ATOLL NWR

FILL QUANTITIES BELOW HAT	
MATERIAL	VOL. (CY)
UNDER LAYER ROCK	250
ARMOR ROCK	635
GRANULAR FILL	150
EXCAVATION BELOW MHW	100



TYPICAL REVETMENT 'A' PLAN VIEW



SECTION A-A SEAWALL REPAIR TYPICAL SECTION

PURPOSE:
PROTECT REFUGE AIRFIELD RESOURCES FROM EROSION

DATUM: 0.0' M.L.L.W.

ADJACENT PROPERTY OWNERS:
USFWS

LOCATION:
LATITUDE: 28° 12' 17.71"
LONGITUDE: 177° 22' 09.55"W

HENDERSON FIELD SEAWALL LONG-TERM MAINTENANCE PROJECT TYPICAL REVETMENT 'A' ADJACENT REPAIRS

USFWS MIDWAY ATOLL NWR
1082 MAKEPONO ST.
HONOLULU, HI 96819

PROPOSED:
REPLACE FAILING SECTIONS OF SEAWALL W/ REVETMENT

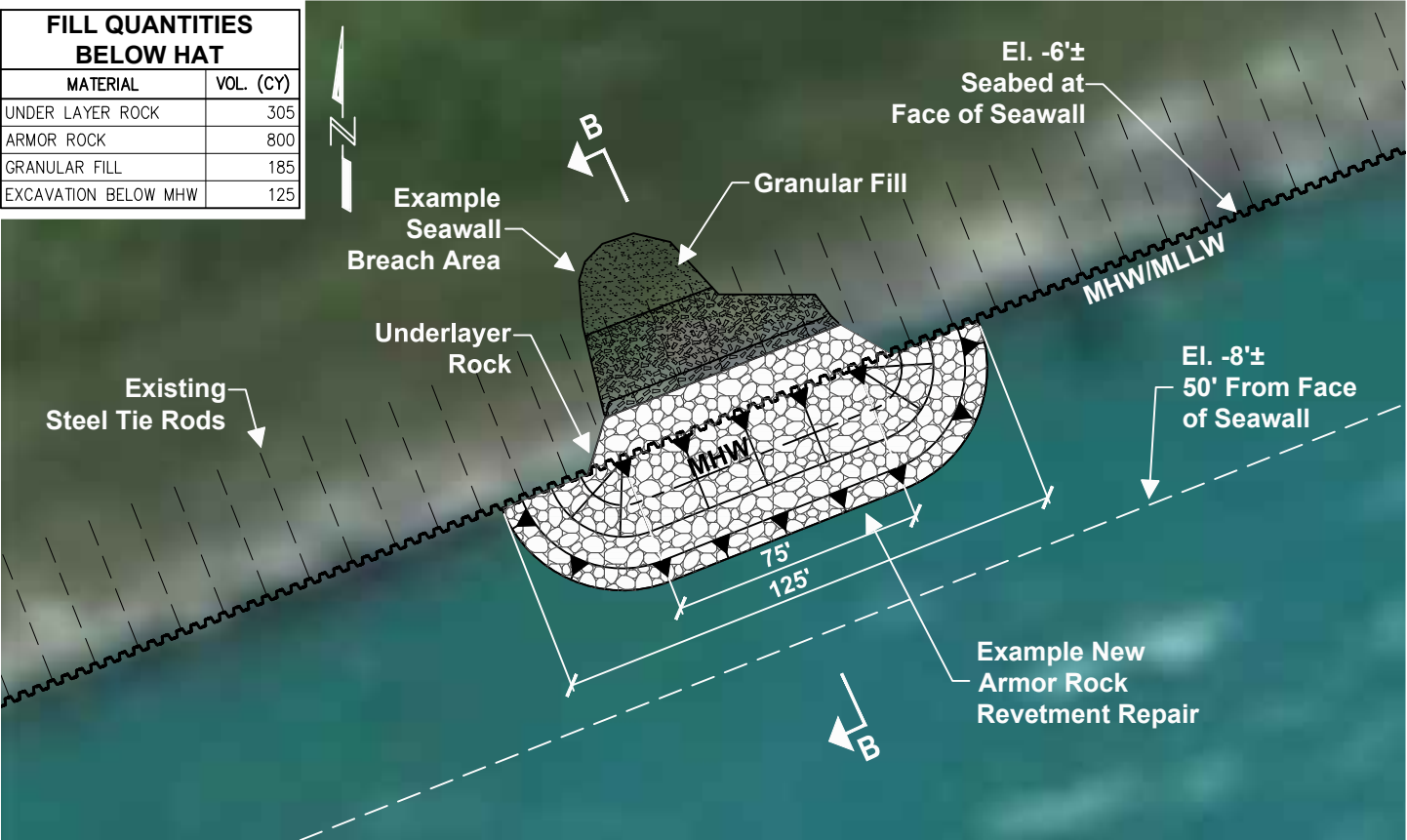
IN: PACIFIC OCEAN

AT: SAND ISLAND, MIDWAY ATOLL NATIONAL WILDLIFE REFUGE

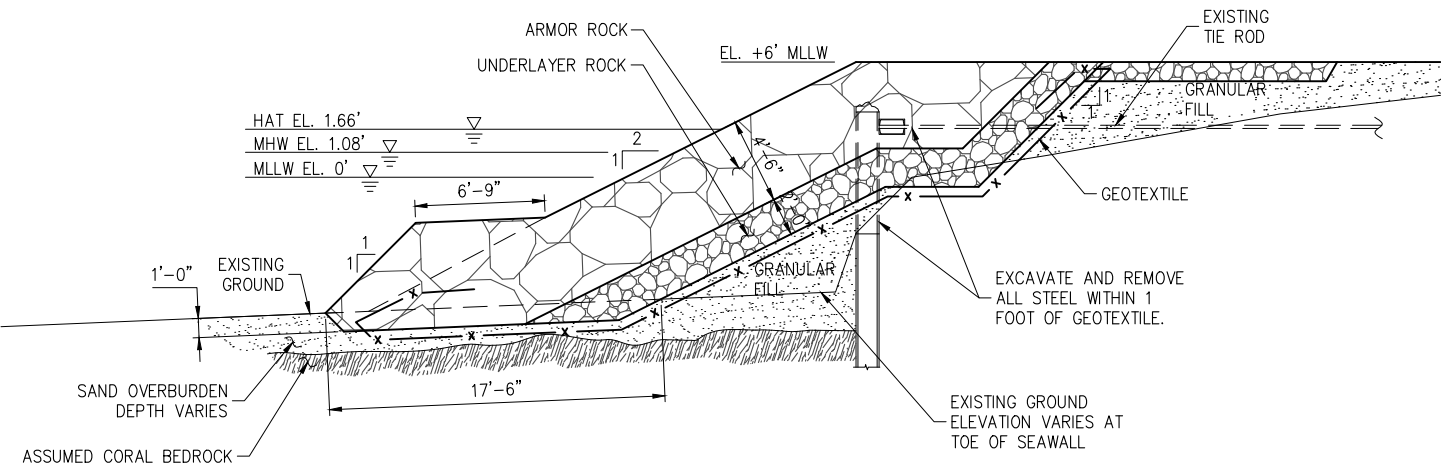
APPLICATION BY:
USFWS MIDWAY ATOLL NWR

SHEET 3 of 4 DATE: OCT 2017

FILL QUANTITIES BELOW HAT	
MATERIAL	VOL. (CY)
UNDER LAYER ROCK	305
ARMOR ROCK	800
GRANULAR FILL	185
EXCAVATION BELOW MHW	125



TYPICAL REVETMENT 'B' PLAN VIEW



SECTION B-B SEAWALL REPAIR TYPICAL SECTION

PURPOSE:
PROTECT REFUGE AIRPORT RESOURCES FROM EROSION

DATUM: 0.0' M.L.L.W.

ADJACENT PROPERTY OWNERS:
USFWS

LOCATION:
LATITUDE: 28° 12' 17.71"N
LONGITUDE: 177° 22' 09.55"W

HENDERSON FIELD SEAWALL LONG-TERM MAINTENANCE PROJECT TYPICAL REVETMENT 'B' NEW REPAIRS

USFWS MIDWAY ATOLL NWR
1082 MAKEPONO ST.
HONOLULU, HI 96819

PROPOSED:
REPLACE FAILING SECTIONS OF SEAWALL W/ REVETMENT

IN: PACIFIC OCEAN

AT: SAND ISLAND, MIDWAY ATOLL NATIONAL WILDLIFE REFUGE

APPLICATION BY:
USFWS MIDWAY ATOLL NWR

SHEET 4 of 4 DATE: OCT 2017