

# News Release

## *National Wildlife Refuge System*



FOR IMMEDIATE RELEASE

Jennifer McAndrews (302) 684-8419

### **CLOSURE OF PORTIONS OF PRIME HOOK CREEK**

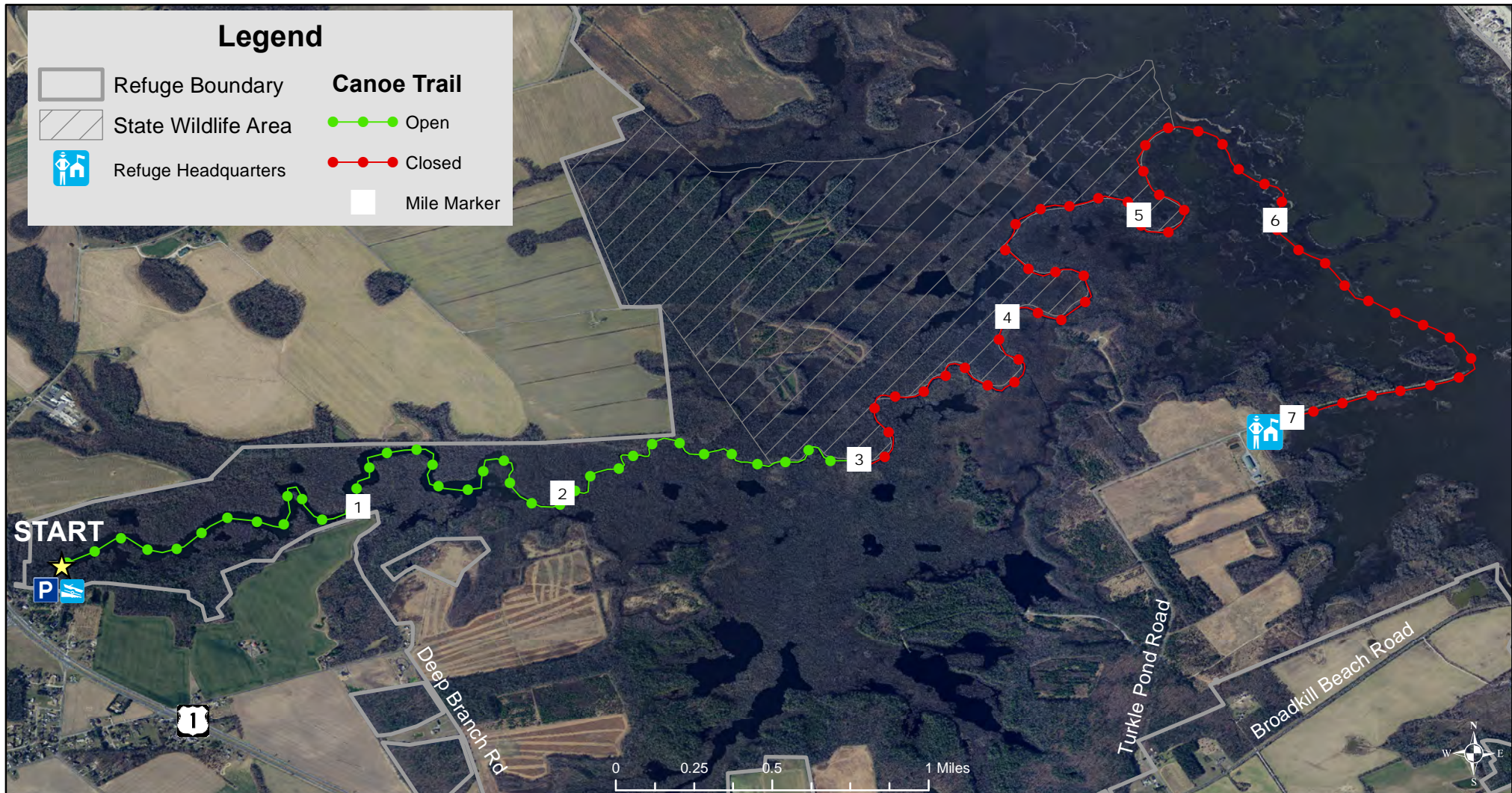
The easternmost four miles of Prime Hook Creek at Prime Hook National Wildlife Refuge will be closed from September 1, 2016, through March 15, 2017, for safety concerns due to hunting of teal in September in the adjacent Prime Hook (State) Wildlife Area, hunting on federal and state areas during the three seasonal splits of the waterfowl season, and for other management purposes. The westernmost portion of the creek will be open year-round. Access for boats and canoes is from the boat ramp located behind Brumbley's Family Park off of Route 1 near Waples Pond. For more information, check out our canoe trail brochure or call the Refuge office at (302) 684-8419.

*The mission of the U.S. Fish and Wildlife Service is working with others to conserve, protect and enhance fish, wildlife, plants and their habitats for the continuing benefit of the American people. We are both a leader and trusted partner in fish and wildlife conservation, known for our scientific excellence, stewardship of lands and natural resources, dedicated professionals and commitment to public service. For more information on our work and the people who make it happen, visit [www.fws.gov](http://www.fws.gov).*

XXX

August 30, 2016

# Prime Hook National Wildlife Refuge - Prime Hook Creek Canoe Trail



## ATTENTION REFUGE VISITORS:

### CLOSURE OF PORTIONS OF PRIME HOOK CREEK DURING WATERFOWL HUNTING SEASON

The easternmost four miles of Prime Hook Creek at Prime Hook National Wildlife Refuge will be closed from September 1, 2016, through March 15, 2017, for safety concerns due to hunting of teal in September in the adjacent Prime Hook (State) Wildlife Area, hunting on federal and state areas during the three seasonal splits of the waterfowl season, and for other management purposes.

The westernmost portion of the creek will be open year-round. Access for boats and canoes is from the boat ramp located behind Brumbley's Family Park off of Route 1 near Waples Pond.

For more information, check out our canoe trail brochure or call the Refuge office at (302) 684-8419.