

# Meadow Pond Trail Map

## Directions

From the Visitor Center:

Take a right out of the driveway onto Refuge Road.

At 3-way intersection, take a left.

Follow road 2.2 miles to stop sign.

Trail begins straight ahead through the gate.

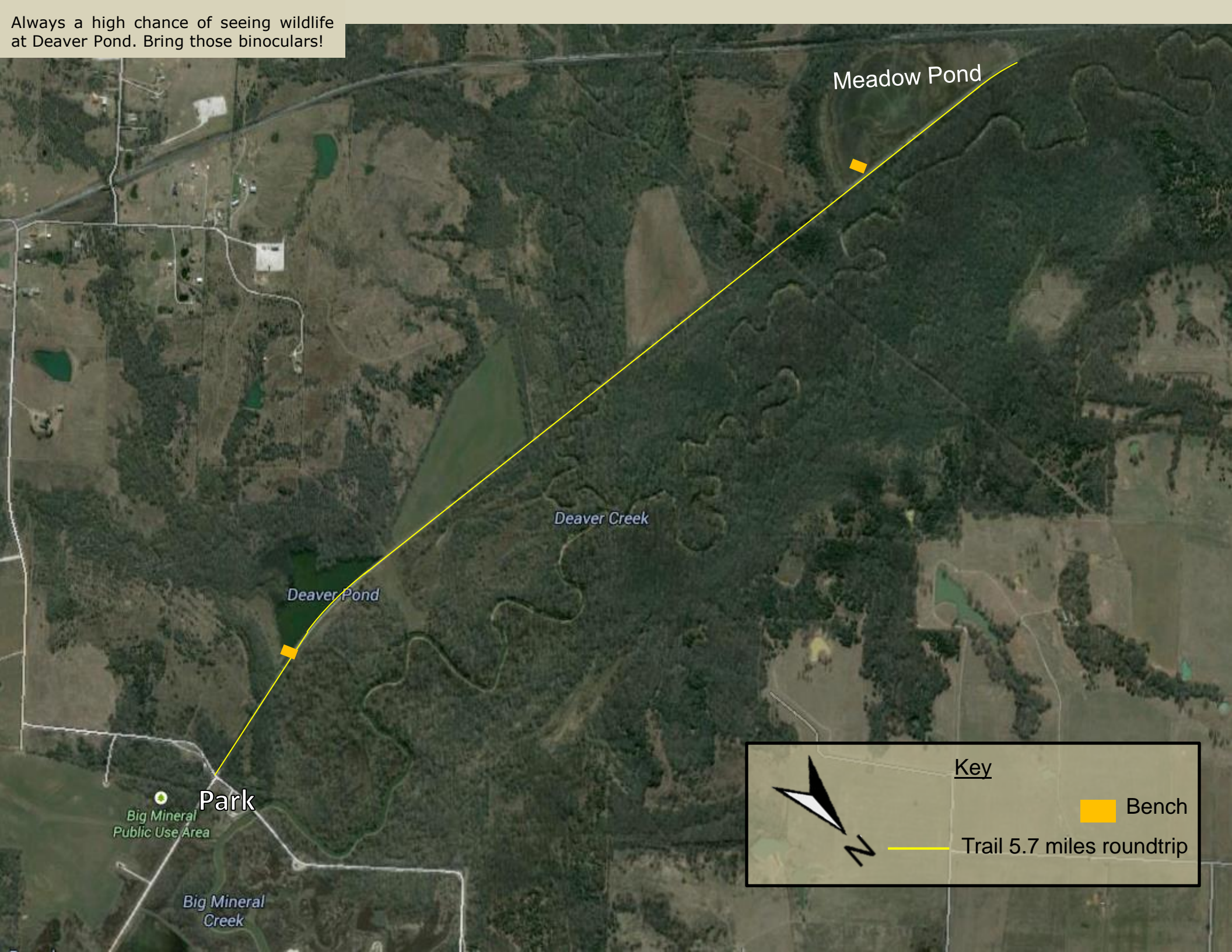
Parking is allowed anywhere at the Big Mineral Day Use Area, but do not block the gate.

## Hagerman National Wildlife Refuge

6465 Refuge Road  
Sherman, Texas 75092-5817  
(903) 786-2826

[www.fws.gov/refuge/hagerman](http://www.fws.gov/refuge/hagerman)

Always a high chance of seeing wildlife at Deaver Pond. Bring those binoculars!



Meadow Pond

Deaver Creek

Deaver Pond

Park

Big Mineral  
Public Use Area

Big Mineral  
Creek

Key

 N

 Bench

 Trail 5.7 miles roundtrip