



Hagerman National Wildlife Refuge


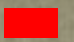
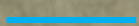
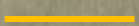
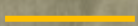
6465 Refuge Road
Sherman, Texas 75092-5817
(903) 786-2826

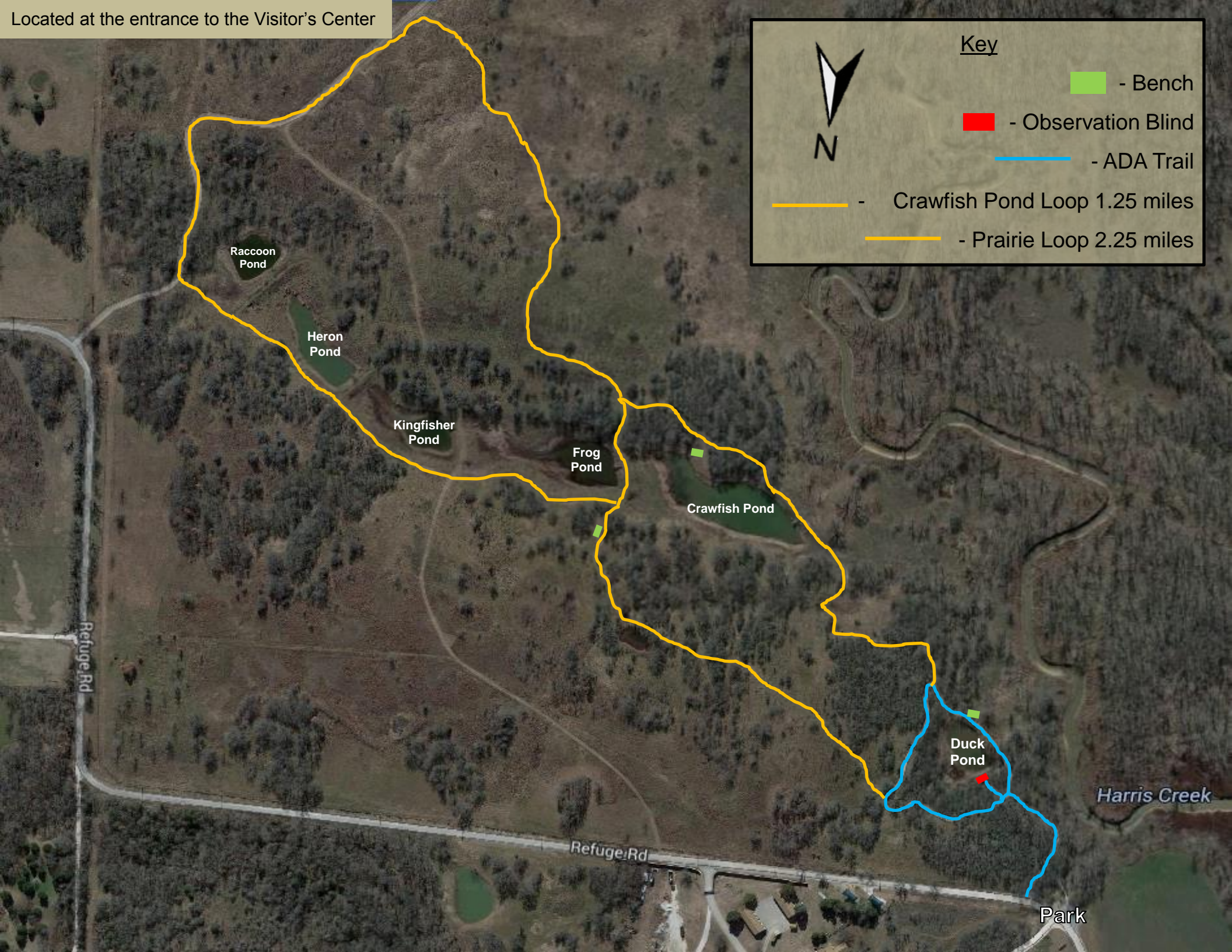

www.fws.gov/refuge/hagerman

Harris Creek Trail Map

Located at the entrance to the Visitor's Center

Key

-  - Bench
-  - Observation Blind
-  - ADA Trail
-  - Crawfish Pond Loop 1.25 miles
-  - Prairie Loop 2.25 miles



Raccoon Pond

Heron Pond

Kingfisher Pond

Frog Pond

Crawfish Pond

Duck Pond

Harris Creek

Refuge Rd

Park