

# Freshwater and Aquatic Invertebrates Key

**Northern Water Snake**



**Blue- Flag Iris**



**Duck Weed**



**Painted Turtle**



**Snapping Turtle**



**Tadpole**



**Eastern Mudminnow**



**Brown Bullhead**



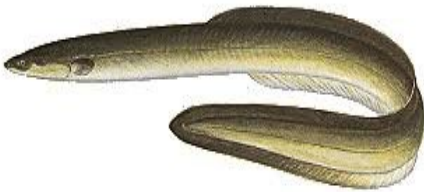
**Bluegill**



**Pumpkinseed**



**American Eel**



**Great Egret**



**Yellow pond lily**



**Cattail**



**Hornwort**



**Pickrel Weed**



**Arrow arum**



**Arrow-head**



# Freshwater and Aquatic Invertebrates Key

**Damselfly Nymph**



**Mayfly Nymph**



**Stonefly Nymph**



**Dragonfly Nymph**



**Water Strider**



**Water Scorpion**



**Giant water bug**



**Water Boatman**



**Backswimmer**



**Diving Beetle**



**Whirligig Beetle**



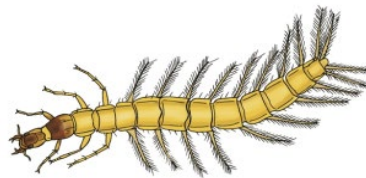
**Riffle Beetle**



**Diving Beetle Larva**



**Whirligig Beetle Larva**



**Water Penny (beetle larva)**



**Hellgrammite (dobsonfly larva)**



**Case-dwelling Caddisfly Larva**



**Net-spinning Caddisfly Larva**



# Freshwater and Aquatic Invertebrates Key

**Midge Larva**



**Mosquito Larva**



**Crane Fly Larva**



**Water Spider**



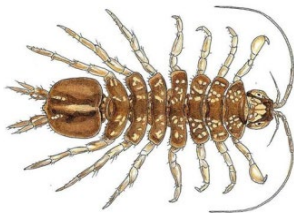
**Water Mite**



**Crayfish**



**Aquatic Sowbug (isopod)**



**Scud (amphipod)**



**Grass Shrimp**



**Water Flea (Daphnia)**



**Copepod**



**Ostracod (seed shrimp)**



**Leech**



**Snails**



**Clams**



**Segmented Worm**



**Roundworm**



**Flatworm**

