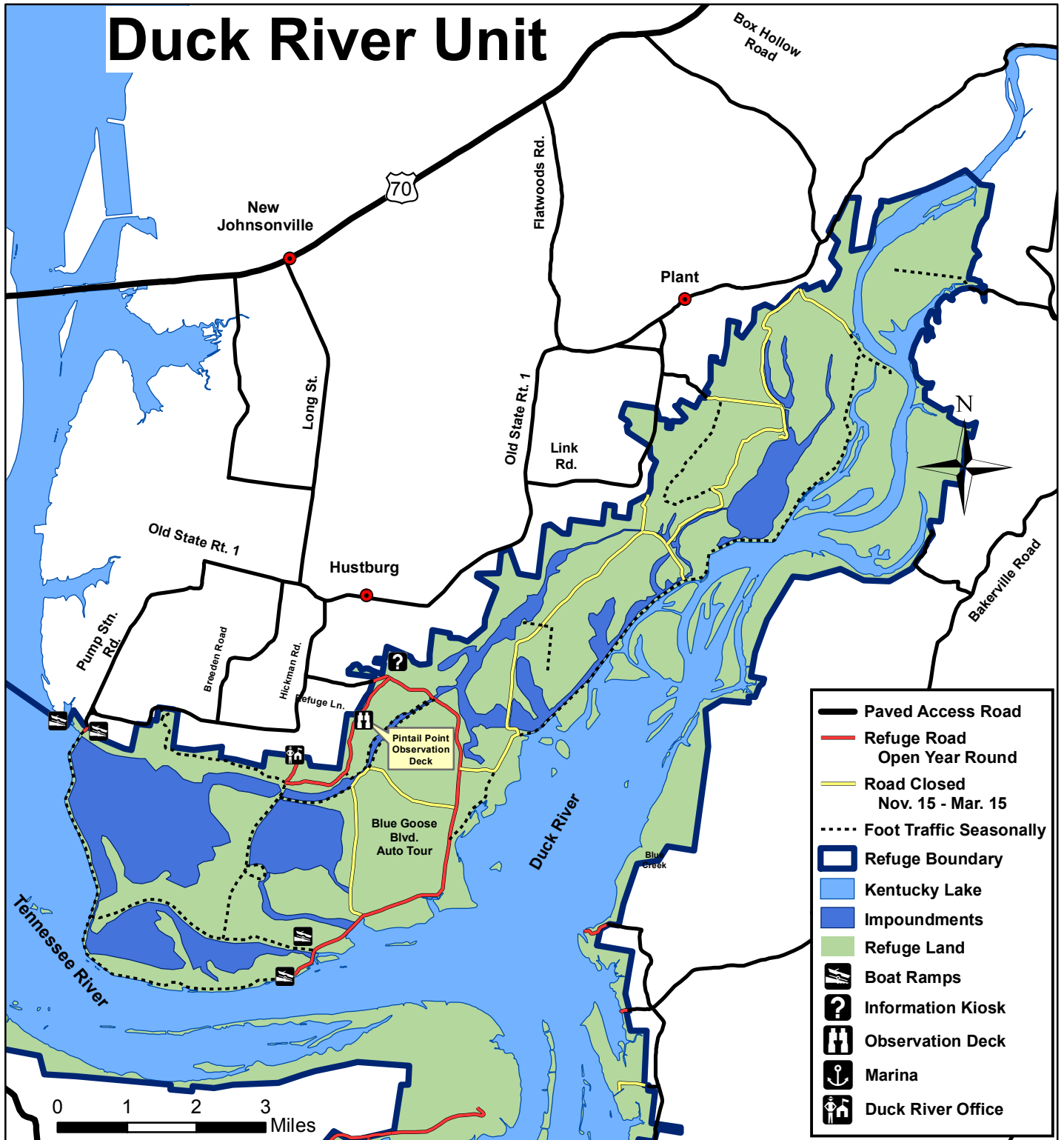


# Duck River Unit



- Paved Access Road
- Refuge Road  
Open Year Round
- Road Closed  
Nov. 15 - Mar. 15
- Foot Traffic Seasonally
- Refuge Boundary
- Kentucky Lake
- Impoundments
- Refuge Land
- Boat Ramps
- Information Kiosk
- Observation Deck
- Marina
- Duck River Office