

Carolina Sandhills National Wildlife Refuge Chesterfield County, SC

The Carolina Sandhills National Wildlife Refuge (NWR) is one of more than 560 refuges in the National Wildlife Refuge System. These refuges, encompassing more than 90 million acres, protect and enhance a wide variety of habitats, ensuring the survival of fish, wildlife, plants, and other natural resources for the continuing benefit of the American people.

Carolina Sandhills NWR was established in 1939 to restore wildlife and habitats of the longleaf pine/wiregrass ecosystem. The refuge supports a variety of plants and animals including 200 species of birds, 42 species of mammals, 41 species of reptiles, 25 species of amphibians, and more than 1,000 species of plants.

Sport fishing on Carolina Sandhills NWR is permitted on approximately 350 acres of water designated on the map on the back of this handout. Fishing is in accordance with all applicable State regulations and subject to these special refuge regulations:

Permits

No refuge permit is required. State fishing license required.

Refuge Hours

Visitors may access the refuge from one hour before legal sunrise until one hour after legal sunset.

Open Season

All lakes and pools, except Martins Lake, are open for fishing year round unless otherwise designated by signs as being closed to fishing.

Please check with the Refuge Office (843/335 8350 or carolinasandhills@fws.gov) for any possible road, lake, or area closures.

Lynches River and bridges on Black Creek are open year round.

Bank fishing is permitted on all open lakes.

Species, Limits and Equipment

Same as State regulations with the following exceptions:

Martins Lake

Martins Lake is open to watercraft and fishing from March 1 through October 31 annually.

Fishing is catch and release only.

Martins Lake is closed to all access from November 1 through February 28 annually to provide waterfowl sanctuary.

Mays and Honkers Lakes

The creel limit on largemouth bass is five fish per person per day. All bass must be a minimum length of 12 inches.

Oxpen Lake – youth/adult fishing only

A youth (under age 16 years) must be actively fishing and may be accompanied by no more than two adults. Adults are not permitted to fish unless they are accompanied by a youth.

The creel limit on channel catfish is five fish per person per day.

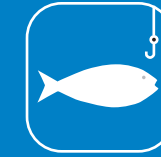
Watercraft

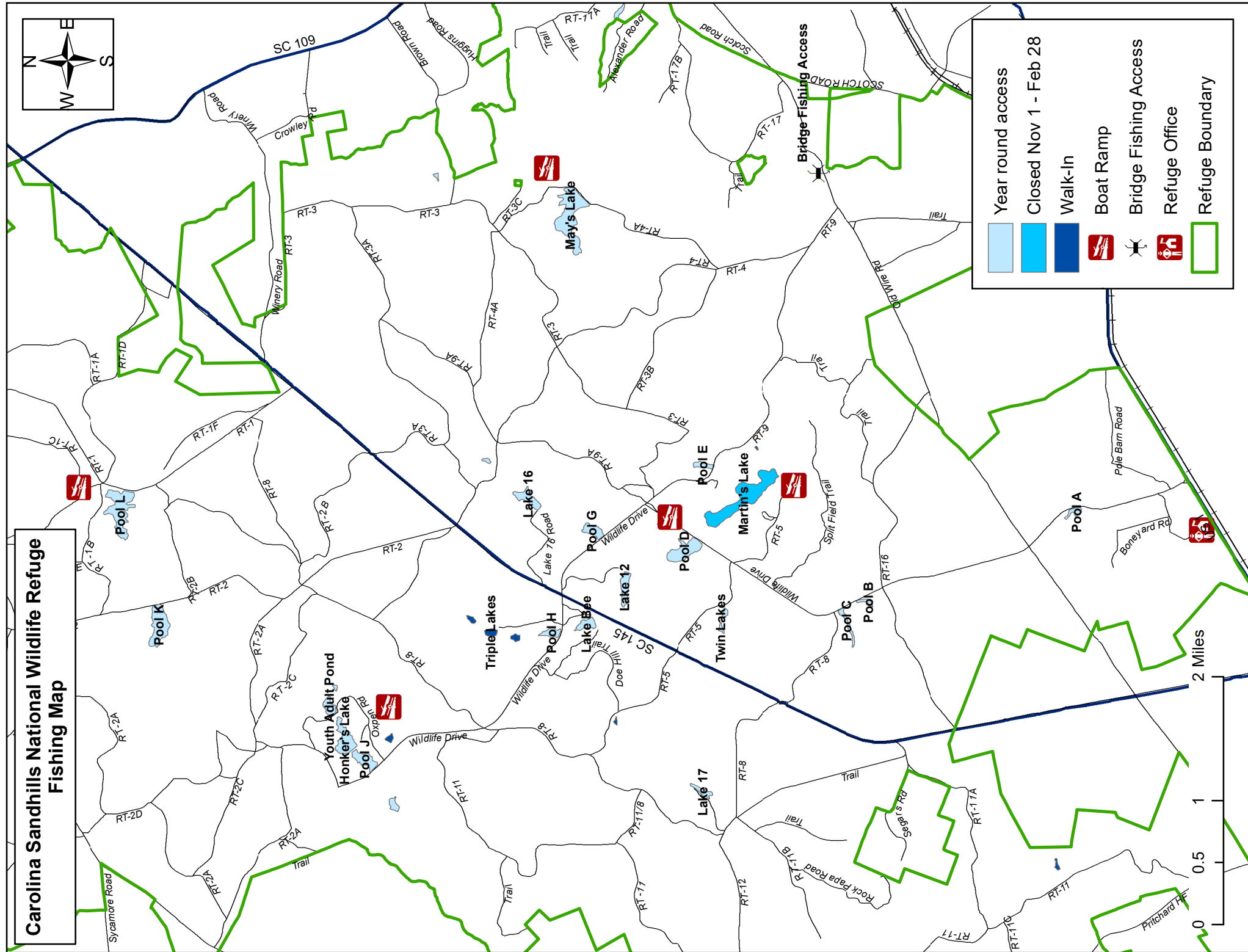
Boat trailers or vehicles are not permitted to back into the water except at designated boat ramps. Boat ramps are provided at Pool D, Pool L, Honkers, Martins, and Mays lakes. All other lakes are open to boats, but boats must be hand loaded and unloaded. Boats should not be skidded up and down dams or on water control structures.

Carolina Sandhills

National Wildlife Refuge

Fishing Regulations





Only electric motors are permitted. Gas motors are not allowed. Boats with permanently mounted gas motors are permitted as long as the propeller is locked out of the water.

Canoes, kayaks, and paddle boards are permitted on all open lakes in accordance with State regulations.

Vehicles

Use only roads and trails that are designated as open for public vehicle travel. Maximum speed is 25 mph unless otherwise posted. Park vehicles off roads, dams, and trails so that they do not impede traffic, block gates, or cause a safety hazard.

Prohibited Activities

- Disturbing wildlife or nest boxes.
- Swimming and wading.
- Use or possession of alcoholic beverages.
- Drones, camping, fires, and fireworks.
- Littering.
- Snagging, pulling, or jerking fish by a device equipped with one or more hooks through the water to impale fish.
- Fish baskets, nets, set hooks, trotlines, and bowfishing.
- Searching for or removal of any natural items such as antlers, skulls, skins, and plants. Historic and archaeological features are protected by Federal law.

The provisions of this special regulation supplement the general regulations which govern fishing on wildlife refuge areas and which are set forth in Title 50, Code of Federal Regulations, Part 32.

**This is your refuge.
Please keep it clean.
Report violations.**