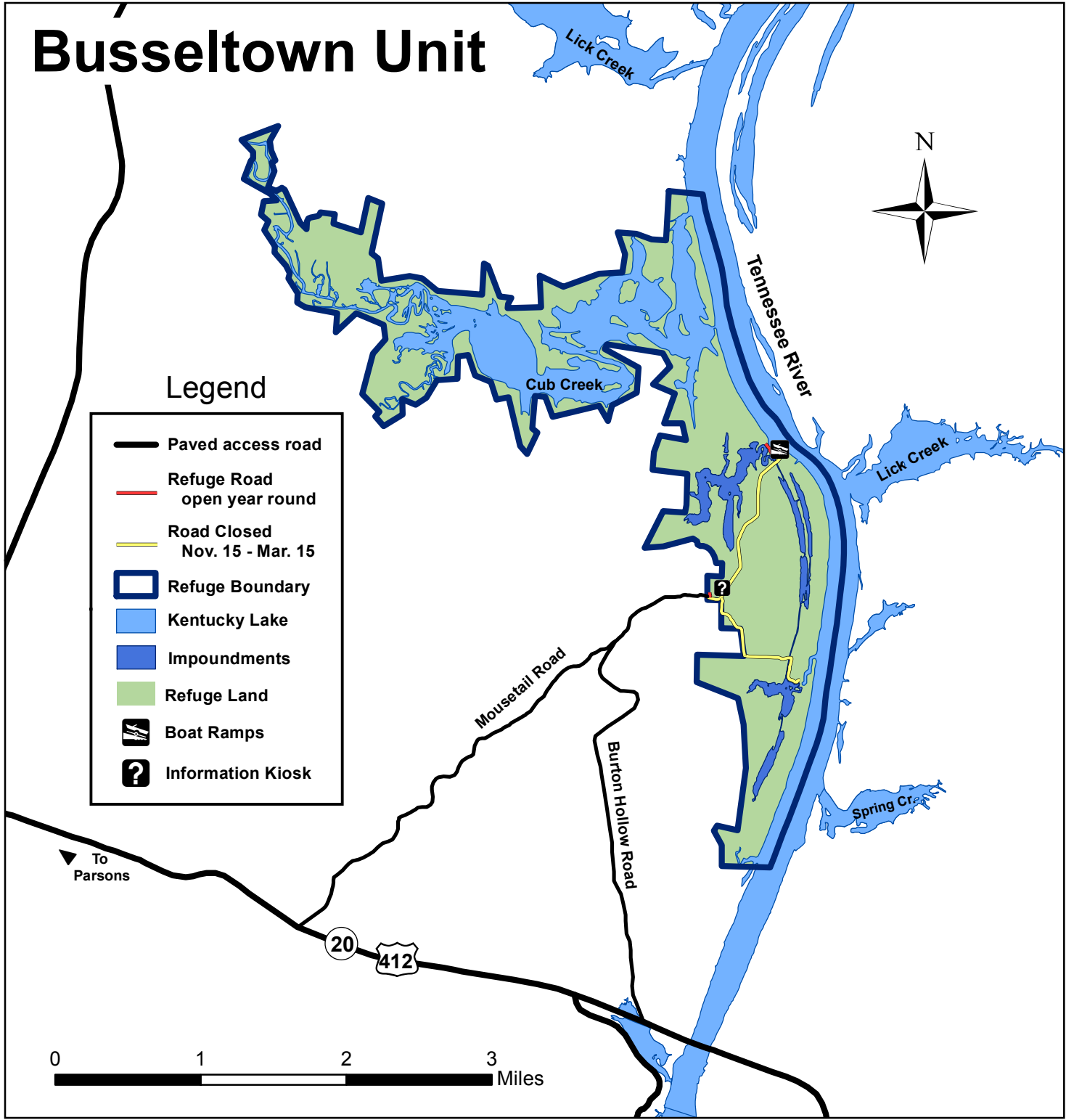
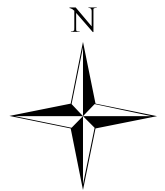


# Busseltown Unit

## Legend

-  Paved access road
-  Refuge Road open year round
-  Road Closed Nov. 15 - Mar. 15
-  Refuge Boundary
-  Kentucky Lake
-  Impoundments
-  Refuge Land
-  Boat Ramps
-  Information Kiosk



▼ To Parsons

0 1 2 3 Miles