

# Minnesota Valley National Wildlife Refuge

## National Wildlife Refuge

---

### Wildlife Checklists

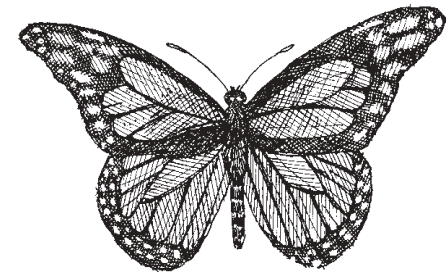
Minnesota Valley National Wildlife Refuge  
 3815 American Boulevard East  
 Bloomington, MN 55425-1600  
 952/854 5900

Minnesota Valley's website address:  
<http://midwest.fws.gov/minnesotavalley>

U.S. Fish & Wildlife Service  
 1 800/344 WILD (9453)  
<http://www.fws.gov>

Deaf/hard of hearing individuals may reach  
 Minnesota Valley NWR through the Federal  
 Information Relay System at 1 800/877 8339

Available in alternative formats upon request.



	ST		ST
<b>BRUSH-FOOTED</b>		<b>SKIPPERS</b>	
Variegated Fritillary	u	<b>Spread-winged Skippers</b>	
Great Spangled Fritillary	c	Silver-spotted Skipper	c
Regal Fritillary	o	Northern Cloudywing	o
Atlantis Fritillary*	r	Juvenal's Duskywing	o
Aphrodite Fritillary	o	Horace's Duskywing	o
Meadow Fritillary	o	Dreamy Duskywing*	r
Frigga Fritillary*	r	Sleepy Duskywing*	r
Silver-bordered Fritillary	o	Wild Indigo Duskywing	o
Bog Fritillary*	r	Columbine Duskywing	o
Pearl Crescent	a	Mottled Duskywing*	r
Northern Crescent	u	Common Checkered Skipper	c
Tawny Crescent*	r	Common Sootywing	c
Silvery Checkerspot	o	<b>Skipperlings</b>	
Harris' Checkerspot	o	Arctic Skipper*	r
Gorgon Checkerspot	o	<b>Grass Skippers</b>	
Baltimore Checkerspot	u	Fiery Skipper*	r
Question Mark	c	Sachem	u
Eastern Comma	u	European Skipper	o
Gray Comma	r	Least Skipper	o
Compton Tortoiseshell*	r	Poweshiek Skipper	o
Milbert's Tortoiseshell	o	Common Banded Skipper*	r
Mourning Cloak	a	Cobweb Skipper*	r
Red Admiral	a	Leonard's Skipper	o
American Lady	c	Indian Skipper*	r
Painted Lady	c	Ottoo Skipper	r
Common Buckeye	u	Long Dash	u
White Admiral/	r	Peck's Skipper	u
Red-spotted Purple	c	Tawny-edged Skipper	u
Viceroy	c	Crossline Skipper	o
Hackberry Emperor	c	Black Dash	o
Tawny Emperor	o	Northern Broken Dash*	r
<b>SNOUTS</b>		Little Glossywing*	r
American Snout*	r	Dun Skipper	u
<b>MILKWEEDS</b>		Hobomok Skipper	u
Monarch	a	Mulberry Wing	o
<b>SATYRS</b>		Broad-winged Skipper	o
Little Wood Satyr	c	Two-spotted Skipper	o
Common Wood Nymph	c	Dion Skipper	u
Eyed Brown	u	Delaware Skipper	u
Appalachian Brown*	r	Arogos Skipper	o
Northern Pearly Eye	c	Dusted Skipper	o
Common Ringlet	c	Common Roadside Skipper	u
Jutta Arctic*	r	Pepper and Salt Skipper*	r
		Eufala Skipper*	r

OTHER (list)

\_\_\_\_\_

\_\_\_\_\_

\_\_\_\_\_

\_\_\_\_\_

Status (ST) symbols used are as follows:

Occurance (O):

- a .... abundant: a common species that is very numerous
- c .... common: certain to be seen or heard in suitable habitat, not in large numbers
- u .... uncommon: present but not always seen
- o .... occasional; seen only a few times during the season
- r .... rare: seen every 2 to 5 years

*Animal Checklists of Minnesota Valley NWR*

Minnesota Valley National Wildlife Refuge encompasses a large and diverse area of the Minnesota River Valley. Included are bottomland and bluff forest, tallgrass prairie, marshes and lakes, and riparian habitats. Mammals are best observed in the early morning or late afternoon/evening. Numbers of species and populations fluctuate through the year. Butterflies can be observed from March through November, and are most active in sunny weather.

*We Need Your Help*

Records of animal occurrence are kept by refuge staff and outside researchers. You can help by reporting your own sightings to the refuge staff.

**Reptiles/Amphibians and Mammals**

*Symbols used are as follows:*

- Occurance (O):** a .... abundant: a common species that is very numerous  
 c .... common: certain to be seen or heard in suitable habitat, not in large numbers  
 u .... uncommon: present but not always seen  
 o .... occasional; seen only a few times during the season  
 r .... rare: seen every 2 to 5 years  
 x .... accidental: seen only once or twice

- Habitat (H):** o .... oak savanna and dry prairie uplands  
 f .... floodplain forest and low prairie or meadow  
 m .... marsh and open water

<b>MAMMALS</b>	
<b>Marsupials</b>	
_____ Opposum, Virginia ( <i>Didelphis virginiana</i> )	[ u ] of
<b>Insectivores</b>	
_____ Shrew, Masked ( <i>Sorex cinereus</i> )	[ u ] f
_____ Shrew, Arctic ( <i>Sorex arcticus</i> )	[ r ] f
_____ Shrew, Pygmy ( <i>Microsorex hoyi</i> )	[ r ] f
_____ Shrew, Northern Shorttail ( <i>Blarina brevicauda</i> )	[ c ] ofm
_____ Mole, Eastern ( <i>Scalopus aquaticus</i> )	[ u ] of
_____ Mole, Star-nose ( <i>Condylura aristata</i> )	[ r ] f
<b>Bats</b>	
_____ Myotis, Little Brown ( <i>Myotis lucifugus</i> )	[ c ] f
_____ Myotis, Keen ( <i>Myotis keenii</i> )	[ r ] f
_____ Bat, Silver-haired ( <i>Lasionycteris noctivagans</i> )	[ r ] f
_____ Pipistrel, Eastern ( <i>Pipistrellus subflavus</i> )	[ r ] f
_____ Bat, Big Brown ( <i>Eptesicus fuscus</i> )	[ c ] f
_____ Bat, Eastern Red ( <i>Lasiurus borealis</i> )	[ c ] fm
_____ Bat, Hoary ( <i>Lasiurus cinereus</i> )	[ c ] f
<b>Rabbits and Hares</b>	
_____ Cottontail, Eastern ( <i>Sylvilagus floridanus</i> )	[ c ] ofm
_____ Jackrabbit, Whitetail ( <i>Lepus townsendii</i> )	[ u ] o
<b>Rodents</b>	
_____ Woodchuck ( <i>Marmota monax</i> )	[ a ] of
_____ Grd. Squirrel, Richardson ( <i>Spermophilus richardsonii</i> )	[ u ] f
_____ Grd. Squirrel, 13-lined ( <i>Spermophilus tridecemlineatus</i> )	[ c ] o
_____ Ground Squirrel, Franklin ( <i>Spermophilus franklinii</i> )	[ u ] of
_____ Chipmunk, Eastern ( <i>Tamias striatus</i> )	[ c ] of
_____ Squirrel, Eastern Gray ( <i>Sciurus carolinensis</i> )	[ a ] of
_____ Squirrel, Eastern Fox ( <i>Sciurus niger</i> )	[ c ] f
_____ Squirrel, Red ( <i>Tamiasciurus hunsonicus</i> )	[ a ] f
_____ Squirrel, Southern Flying ( <i>Glaucomys volans</i> )	[ u ] f
_____ Pocket Gopher, Plains ( <i>Geomys bursarius</i> )	[ a ] o
_____ Mouse, Plains Pocket ( <i>Perognathus flavescens</i> )	[ u ] o
_____ Beaver ( <i>Castor canadensis</i> )	[ c ] m
_____ Mouse, W. Harvest ( <i>Reithrodontomys megalotis</i> )	[ r ] o
_____ Mouse, Deer ( <i>Peromyscus maniculatus</i> )	[ u ] o
_____ Mouse, White-footed ( <i>Peromyscus leucopus</i> )	[ c ] of
_____ Vole, Southern Red-backed ( <i>Clethrionomys gapperi</i> )	[ u ] f
_____ Vole, Meadow ( <i>Microtus pennsylvanicus</i> )	[ u ] f
_____ Muskrat ( <i>Ondatra zibethicus</i> )	[ a ] f
_____ Rat, Norway ( <i>Rattus norvegicus</i> )	[ u ] o
_____ Mouse, House ( <i>Mus musculus</i> )	[ u ] o
_____ Mouse, Meadow Jumping ( <i>Zapus hudsonius</i> )	[ c ] f
<b>Canines</b>	
_____ Coyote ( <i>Canis latrans</i> )	[ u ] o
_____ Fox, Red ( <i>Vulpes vulpes</i> )	[ c ] of
_____ Fox, Gray ( <i>Urocyon cinereoargenteus</i> )	[ u ] o
_____ Raccoon ( <i>Procyon lotor</i> )	[ c ] fm
<b>Weasels, Skunks, and Allies</b>	
_____ Weasel, Shorttail; Ermine ( <i>Mustela erminea</i> )	[ u ] f
_____ Weasel, Least ( <i>Mustela nivalis</i> )	[ u ] o
_____ Weasel, Longtail ( <i>Mustela frenata</i> )	[ u ] f
_____ Mink ( <i>Mustela vison</i> )	[ u ] m
_____ Badger ( <i>Taxidea taxus</i> )	[ r ] o
_____ Skunk, Eastern Spotted ( <i>Spilogale putorius</i> )	[ u ] of
_____ Skunk, Striped ( <i>Mephitis mephitis</i> )	[ c ] of
_____ Otter, River ( <i>Lontra canadensis</i> )	[ r ] m
<b>Hoofed Mammals</b>	
_____ Deer, Whitetail ( <i>Odocoileus virginianus</i> )	[ c ] ofm

<b>REPTILES AND AMPHIBIANS</b>	
<b>Turtles</b>	
_____ Snapping Turtle ( <i>Chelydra serpentina</i> )	[ c ] fm
_____ Common Map Turtle ( <i>Graptemys geographicus</i> )	[ r ] m
_____ False Map Turtle ( <i>Graptemys pseudogeographicus</i> )	[ c ] m
_____ Painted Turtle ( <i>Chrysemys picta</i> )	[ c ] fm
_____ Blandings Turtle ( <i>Emydoidea blandingii</i> )	[ r ] fm
_____ Smooth Softshell ( <i>Apalone mutica</i> )	[ c ] m
_____ Spiny Softshell ( <i>Apatone spinifera</i> )	[ c ] fg
<b>Lizards</b>	
_____ Prairie Skink ( <i>Eumeces septentrionalis</i> )	[ u ] f
<b>Snakes</b>	
_____ Northern Water Snake ( <i>Nerodia sipedon</i> )	[ c ] fm
_____ Brown (DeKay's) Snake ( <i>Storeria dekayi</i> )	[ u ] fm
_____ Redbelly Snake ( <i>Storeria occipitomaculata</i> )	[ u ] fm
_____ Common Garter Snake ( <i>Thamnophis sirtalis</i> )	[ a ] ofm
_____ Plains Garter Snake ( <i>Thamnophis radix</i> )	[ c ] ofm
_____ Western Hognose Snake ( <i>Heterodon nasicus</i> )	[ c ] o
_____ Racer ( <i>Coluber constrictor</i> )	[ u ] o
_____ Smooth Green Snake ( <i>Opheodrys vernalis</i> )	[ u ] f
_____ Fox Snake ( <i>Elaphe vulpina</i> )	[ c ] fm
_____ Bull Snake ( <i>Pituophis catenifer sayi</i> )	[ c ] o
_____ Milk Snake ( <i>Lampropeltis triangulum</i> )	[ u ] f
<b>Salamanders</b>	
_____ Mudpuppy ( <i>Necturus maculosus</i> )	[ u ] m
_____ Eastern Newt ( <i>Notophthalmus viridescens</i> )	[ u ] fm
_____ Blue-spotted Salamander ( <i>Ambystoma laterale</i> )	[ r ] f
_____ Tiger Salamander ( <i>Ambystoma tigrinum</i> )	[ c ] f
<b>Toads</b>	
_____ American Toad ( <i>Bufo americanus</i> )	[ c ] ofm
<b>Frogs</b>	
_____ Spring Peeper ( <i>Pseudacris crucifer</i> )	[ c ] fm
_____ Gray Tree Frog ( <i>Hyla versicolor</i> )	[ c ] f
_____ Western Chorus Frog ( <i>Pseudacris triseriata</i> )	[ c ] fm
_____ Green Frog ( <i>Rana clamitans</i> )	[ c ] m
_____ Wood Frog ( <i>Rana sylvatica</i> )	[ c ] f
_____ Northern Leopard Frog ( <i>Rana pipiens</i> )	[ a ] fm

**Butterflies**

	ST		ST
<b>SWALLOWTAILS</b>		<b>GOSSAMER-WINGS</b>	
_____ Eastern Tiger Swallowtail	[ c ]	_____ American Copper	[ u ]
_____ Black Swallowtail	[ u ]	_____ Harvester	[ u ]
_____ Canadian Tiger Swallowtail*	[ r ]	_____ Gray Copper	[ u ]
_____ Giant Swallowtail*	[ r ]	_____ Dorcas Copper*	[ o ]
<b>WHITES &amp; SULPHURS</b>		_____ Purplish Copper	[ u ]
_____ Cabbage White	[ a ]	_____ Bog Copper*	[ r ]
_____ Mustard White	[ u ]	_____ Bronze Copper	[ o ]
_____ Checkered White	[ u ]	_____ Gray Hairstreak	[ u ]
_____ Western White*	[ r ]	_____ Banded Hairstreak	[ o ]
_____ Olympia Marble	[ r ]	_____ Hickory Hairstreak*	[ r ]
_____ Clouded Sulphur	[ a ]	_____ Edwards Hairstreak	[ o ]
_____ Orange Sulphur	[ a ]	_____ Striped Hairstreak	[ o ]
_____ Pink-edged Sulphur*	[ r ]	_____ Acadian Hairstreak	[ o ]
_____ Southern Dogface*	[ r ]	_____ Coral Hairstreak	[ o ]
_____ Dainty Sulphur*	[ r ]	_____ Brown Elfyn*	[ r ]
_____ Little Yellow	[ c ]	_____ Henry's Elfyn*	[ r ]
_____ Mexican Yellow*	[ r ]	_____ Hoary Elfyn*	[ r ]
_____ Cloudless Sulphur*	[ r ]	_____ Eastern Pine Elfyn*	[ r ]
_____ Orange-barred Sulphur*	[ r ]	_____ Juniper (Olive) Hairstreak	[ u ]
<b>SNOUTS</b>		_____ Eastern Tailed-Blue	[ c ]
_____ American Snout*	[ r ]	_____ Western Tailed-Blue*	[ r ]
<b>MILKWEEDS</b>		_____ Silvery Blue	[ o ]
_____ Monarch	[ a ]	_____ Reakirts Blue*	[ r ]
<b>SATYRS</b>		_____ Spring Azure	[ c ]
_____ Little Wood Satyr	[ c ]	_____ Greenish Blue*	[ r ]
_____ Common Wood Nymph	[ c ]	_____ Karner (Melissa) Blue	[ r ]
_____ Eyed Brown	[ u ]		
_____ Appalachian Brown*	[ r ]		
_____ Northern Pearly Eye	[ c ]		
_____ Common Ringlet	[ c ]		
_____ Jutta Arctic*	[ r ]		