

# Dale Bumpers White River

## National Wildlife Refuge

### Public Use, Hunting and Fishing Regulations

#### 2017-2018

#### Dale Bumpers White River National Wildlife Refuge

Dale Bumpers White River National Wildlife Refuge, established in 1935, contains approximately 160,000 acres of prime bottomland hardwood habitat located within the floodplain of the lower White River. For management purposes, most of the lands within the refuge have been divided into a North Unit and a South Unit which are separated by Arkansas Highway 1. Refuge out-lying tracts are not depicted in this brochure; however maps are available upon request. These tracts are open for hunting in accordance with state seasons and bag limits of surrounding zone. All users are permitted on the refuge in accordance with State and Federal regulations as supplemented by the following special refuge regulations.

#### Access and Vehicle Use

The maximum speed for any land vehicle is 25 mph, unless posted otherwise. Refuge roads on the South Unit are open to motorized traffic March 1 through December 15 except the Jacks Bay Hunt Area and Levee Hunt Area will remain open through duck season. All other refuge roads are open all year. Roads

are commonly temporarily closed to land vehicles due to flooding. A locked gate, road closed sign, or other barrier (i.e. mounded dirt) means the road is closed to all motorized vehicles but not to bicycle/foot travel unless signed otherwise. For refuge road and closure information, call the refuge headquarters at 870/282 8200, extension #1.

All licensed vehicles must stay on gravel or paved roads. ATV's or UTV's may only be used on yellow marked trails and are only allowed for wildlife dependent hunting and fishing activities. The trails are marked with high visibility yellow paint on trees.

An ATV or UTV is defined as a vehicle with a maximum tire pressure of 15 psi, a maximum dry weight of 1550 lbs., and with tires having a centerline lug depth of 1 inch or less. Only those vehicles originally designed by their manufacturer to be ATVs or UTVs are allowed; mini-trucks or other modified off- road vehicles are prohibited. Personal watercraft (jet-ski, sea-do) are also prohibited. ATVs or UTVs may not be stored on the refuge or left unattended except while actively hunting or fishing near the ATV or UTV.

Jon Boats 16 feet or less (without motors) with owner's name and address permanently displayed or valid registration may be left on the refuge from March 1 to October 31. **All boats must be removed from the refuge November 1 through February 28.**

#### Required Permits

A User Brochure/Permit or signature section from the front page must be in possession and signed by ALL refuge users. A User Brochure/Permit can be downloaded and printed from the refuge website at [www.fws.gov/refuge/white\\_river/](http://www.fws.gov/refuge/white_river/) An additional quota hunt permit is required to participate in the modern gun quota deer hunt and the muzzleloader quota deer hunt. **To apply for quota hunts, please visit the refuge website at [www.fws.gov/refuge/white\\_river/](http://www.fws.gov/refuge/white_river/) and follow the link provided on the Home page.** Quota hunt permits are non-transferable and non-refundable.

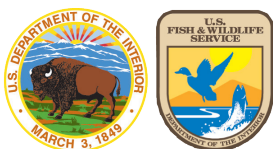
#### General Hunt Regulations

**State bag limits apply for all hunts unless indicated otherwise in this brochure.** Hunters who have harvested their limit of deer and need to assist others to a stand and/or help remove a deer must do so **without** being in possession of a **weapon**.

Dale Bumpers White River  
National Wildlife Refuge  
PO Box 205  
St. Charles, AR 72140  
870/282 8200  
<http://www.fws.gov/whiteriver>

U.S. Fish & Wildlife Service  
1 800/344 WILD

August 2017



#### Dale Bumpers White River National Wildlife Refuge User Brochure/Permit 2017-2018

This User Brochure/Permit must be read and signed to be valid. It must be carried by all. It is not transferable.

**Note:** An additional Quota Hunt Permit is required to participate in the Modern Gun Quota Deer Hunt and the Muzzleloader Quota Deer Hunt.

A User Brochure/Permit and Refuge Map can be downloaded and printed from the Refuge website at [www.fws.gov/refuge/white\\_river/](http://www.fws.gov/refuge/white_river/)

Name \_\_\_\_\_

Address \_\_\_\_\_

By carrying the signature portion of the User Brochure/Permit, you have read and understand the Refuge regulations.

Signature \_\_\_\_\_



## All other hunting is closed during quota deer hunts.

Beaver, nutria, and coyote may be taken without the use of dogs during any daytime refuge hunt with weapons legal for that hunt until the daily limit of game is taken. **In cooperation with the Arkansas Game and Fish Commission's Feral Hog Control Program, Feral Hogs may be taken incidental during the modern gun and muzzleloader deer hunts. Feral hogs may be taken by archery hunters from November 1 through December 31, 2017.** Live hogs may not be transported or possessed.

A hunter born after 1968 must carry a valid Hunter Education Card. Hunters under 16 years old do not need to have a card if they are under the direct supervision (within arms reach) of a holder of a valid hunting license of at least 21 years of age. Youth hunters under the age of 16 who have a valid Hunter Education Card must also be supervised by an adult not less than 21 years old but must only remain in sight and normal voice contact with the adult. An adult may supervise only one youth for big game hunting and up to two youth for waterfowl and small game. Home state Hunter Education Cards will be honored.

Portable tree stands left unattended must have the owner's name and address affixed in a conspicuous manner.

Portable tree stands may be erected 7 days prior to the refuge deer hunt and must be removed from the refuge within 7 days of the close of the deer hunt.

### Weapons

Persons may only use (discharge) firearms during authorized hunting seasons while attempting to take game species. All hunting weapons used on the refuge must comply with state regulations for each game species, except the use or possession of buckshot is prohibited.

### Cooks Lake Unit

Access to the property is allowed through registration only. Upon arrival, register at the Arkansas Game and Fish Commission's Potlatch Conservation Education Center. Hours of operation: Tuesday - Saturday, 8 am - 4:30 pm. For more information, please call 870/241 3373.



*Special Youth Deer Hunt at Cooks Lake*  
December 2-3, 2017. Youth Quota Permit required. Limit two (one buck and one doe, no antler restrictions, Bonus Deer). Call 870/282 8200 for details.

*Mobility Impaired Modern Gun Hunt at Cooks Lake*  
December 8-10, 2017. Mobility Impaired Quota Permit required. Limit two (one buck and one doe, no antler restrictions, Bonus Deer). Call 870/282 8200 for details.

### Flood Zone Closure Regulations

The North Unit closes to deer hunting when the White River gauge at St. Charles reaches 26 feet, as reported by the U.S. Army Corps of Engineers at <http://rivergages.mvr.usace.army.mil/watercontrol/new/layout.cfm>. This restriction is lifted when the gauge falls to or below 23.5 feet.

The South Unit closes to deer hunting when the White River gauge at Graham Burke Outlet reaches 150 feet MSL (30 ft.) and the gauge at Arkansas Post Canal at Lock 1 (Norrell) on the Arkansas River reaches 145 feet MSL simultaneously, as reported by the US Army Corps of Engineers at <http://rivergages.mvr.usace.army.mil/watercontrol/new/layout.cfm>. This restriction is lifted when the White River gauge at Graham Burke Outlet falls to or below 148 feet MSL (28 ft.) and the gauge at the Arkansas Post Canal at Lock 1 (Norrell) on the Arkansas River falls to or below 143 feet MSL.

For safety reasons, quota deer hunts will adhere to a more restrictive flood zone closure that is explained on the actual quota hunt permit cards. SEE INFORMATION ON QUOTA HUNT PERMITS FOR MORE DETAILS.

### Check Stations

During the modern gun quota deer hunt, refuge staff will randomly collect biological data. Collection of this information is necessary to inform management decisions.

For all deer and turkey harvested on the refuge, the hunter will immediately (prior to moving the animal) complete the hunting license kill information. All big game taken on the South Unit must be recorded as zone 145 and North Unit must be recorded as zone 146. Out-lying tracts are the same zone number of the surrounding state zone.

Call 866/305 0808 or visit <http://www.agfc.com/hunting/pages/huntingcheckinggame.aspx> to check your deer or turkey within 24 hours of harvest.

### Deer

State Deer "Zone 9" bag limit applies and either sex with no antler restrictions (Button bucks will be checked as bucks). **The total number of bucks that may be harvested through a combination of all refuge hunts is two.** Only four deer total may be taken from a combination of both units of the refuge.

### Archery Deer

North Unit:  
October 1, 2017–January 31, 2018.

South Unit:  
October 1, 2017–December 31, 2017.

### Muzzleloader Deer

North & South Unit Quota Hunt: October 21-23, 2017. Limit one deer (either sex)

North Unit Only: October 24-27, 2017.  
Limit one buck

### Modern Gun Deer Youth Hunt

North and South Unit: November 4-5, 2017. Limit one deer (either sex)

### Modern Gun Deer

North and South Unit Quota Hunt: November 11-13, 2017. required. Limit one deer (either sex)

North Unit Only: November 14-15, 2017.  
Limit one buck

### Waterfowl

Duck hunting is permitted until 12 noon. Retriever dogs are permitted. Only portable blinds are permitted. Waterfowl hunters may not enter refuge designated hunt areas until 4 am. Blinds, blind material, and decoys must be removed from the refuge by 1 pm each day.

### Waterfowl hunting is closed on the White River from Holly Lake downstream to Benzal Bridge.

To possess, or take or attempt to take waterfowl with the use of, any simulated wing movement decoy or any decoy other than an artificial decoy that imitates the appearance of waterfowl: contains no moving parts or electrical components; and is not subjected to any artificial means that makes it appear to move, splash or cause ripples is prohibited. Exception: Manually operated 'jerk strings' may be used to simulate decoy movement.

# U.S. Fish & Wildlife Service

**North Unit:** Statewide duck season, and youth hunt day(s). Coot may be taken if in season.

Waterfowl hunting on Kansas Lake Area is prohibited.

**South Unit: CLOSED, EXCEPTION: JACKS BAY HUNT AREA** open every Tuesday, Thursday, Saturday, Sunday and youth hunt day(s) of the statewide duck season. Coot may be taken if in season.

**LEVEE HUNT AREA open every Monday, Wednesday, and Friday and youth hunt day(s) of the statewide duck season.** Coot may be taken if in season. Levee hunt area may ONLY be accessed from the White River Levee. Vehicles must travel on gravel roads. Vehicles must park at the end or along the shoulder of gravel roads. Walk-in or non-motorized boats only.

## Furbearer

**North Unit:** 12 noon, November 18, 2017 – 12 noon, January 31, 2018. Dogs may be utilized from sunset to sunrise only.

**South Unit:** 12 noon, December 1, 2017 – 12 noon, December 15, 2017. Dogs may be utilized from sunset to sunrise only.

**Both Units:** Taking of any furbearing animal is limited to rimfire weapons and shotguns, non-toxic shot required for shotguns.

## Furbearer (trapping):

North Unit only. February 1, 2018 - February 28, 2018. Must obtain Special Use Permit from Refuge Headquarters at St. Charles: 870/282 8200

South Unit is closed to furbearer trapping.

## Rabbit and Squirrel

### North Unit:

September 1, 2017 – January 31, 2018. Dogs are allowed December 1, 2017 – January 31, 2018.

### South Unit:

September 1, 2017 – November 30, 2017.

**No dogs allowed.**

## Turkey

Fall gun and Archery: Closed

**North and South Units:** Same as state 2017 season for surrounding zone. **Bag Limit of 1 Legal Turkey. Non-toxic shot required.**

*Bear season closed on all refuge lands including cooperatively managed tracts.*

## Prohibited Acts

- Commercial guiding for the take of wildlife or fish.
- No person shall utilize the service of a guide, guide service, outfitter, club, organization or other person who provides equipment, services, or assistance on the refuge for compensation.
- Cutting, painting or defacing trees.
- The use of horses or mules.
- Unleashed dogs if not actively hunting.
- **Chaining or tying dogs to trees in campgrounds.**
- Fires outside designated campgrounds.
- Littering (including, but not limited to shotgun shell hulls and cigarette butts).
- Operating a motor vehicle without a license (driver or vehicle) or in violation of State law.
- **Beginning November 01, boating in the Jacks Bay Hunt Area and Levee Hunt Area, except from 4 am to 1 pm on waterfowl hunt days.**
- Operating an ATV/UTV on gravel roads.
- Camping in non-designated campgrounds (see map).
- Loud noise in campgrounds after 10 pm.
- Not occupying campsites on a daily basis.
- Persons camping and/or physical camps staying longer than 14 days during any 30 consecutive day period.
- Camping or ATV/UTV use for any reason other than wildlife dependent activities.
- Fires left unattended; fires not extinguished upon final departure.
- Possession of a loaded hunting weapon within 100 yards of a campground.
- Searching for or removal of artifacts, objects of antiquity or other value.
- Personal items (i.e. game cameras, weapons, blinds, etc.) left unattended.

## Interpreting Refuge Signage



This sign clearly marks all refuge property. It is your responsibility to know where the property lines are and hunt within the boundaries.



This area is closed to all entry. No entering, hunting, fishing, or sight-seeing is permitted. No roads or trails beyond this sign are open to the public.



This area is closed to all hunting.

**Take pride in your refuge. Don't litter. Report violations.**

- Hunting with the aid of or possession of bait, salt or ingestible attractant.
- Use of dogs from any gravel roadway during squirrel or raccoon hunts.
- Marking trails with materials other than bio-degradable paper flagging or reflective tape/tacks.
- Possession of alcoholic beverages while hunting.
- Open alcoholic beverages on roadways, boat ramps, ATV trails and parking areas.
- Cutting shooting lanes or other manipulation of vegetation or hunting in such areas.
- Possessing and/or using toxic shot by hunters using shotguns.
- All forms of man-deer drives.
- Firearms hunting from or across roadways, campgrounds, levees, and maintained utility rights-of-way. (Exception: Waterfowl may be hunted in these areas when flooded.)
- Driving or screwing any object into a tree or to hunt from a tree in which an object has been driven or screwed.
- Target practice.

## Commercial Uses

A refuge Special Use Permit is required for all commercial activities.



# U.S. Fish & Wildlife Service

## Dale Bumpers White River National Wildlife Refuge

Located in Arkansas, Monroe, Phillips and Desha counties

Note: Refuge lands within existing outtracts and Trusten Holder WMA not shown.

### Camping

Camping is permitted only in designated campgrounds and dates as listed in map legend. For a list of nearby private campgrounds visit our website: [www.fws.gov/refuge/white\\_river/](http://www.fws.gov/refuge/white_river/)

Down wood may be gathered for use as firewood at campsites. To prevent the spread of harmful invasive insects, please do not bring firewood from elsewhere. Campers are required to remove all of their trash from the refuge. **In an effort to reduce damage to mowers, please remove rock fire rings upon departure from camp grounds.** Campers must stay within the area blazed with white paint in designated camping areas.

### Sport Fishing and Frogging Regulations

Fishing is permitted year round in LaGrue, Essex, Prairie, Scrubgrass & Brooks Bayous, Big Island Chute, Moon and Belknap Lakes next to Arkansas Highway 1, Indian Bay, the Arkansas Post Canal and adjacent drainage ditches, those borrow ditches located adjacent to the west bank of that portion of the White River Levee north of the Graham Burke pumping station,, and all refuge owned waters located north of Arkansas Highway 1. All other refuge waters are open to sport fishing from March 1 through November 30 unless posted otherwise.

Frogging is permitted on all refuge owned waters open for sport fishing as follows: South Unit, frogging is permitted from the beginning of the state season through November 30; North Unit, frogging is permitted for the entire state season.

### Mobility-impaired Users

Individuals with a State issued Mobility Impaired Access Permit may apply for a permit allowing the use of ATV's in accordance with Special Use Permit guidelines. For more information, please call the refuge at 870/282 8200.

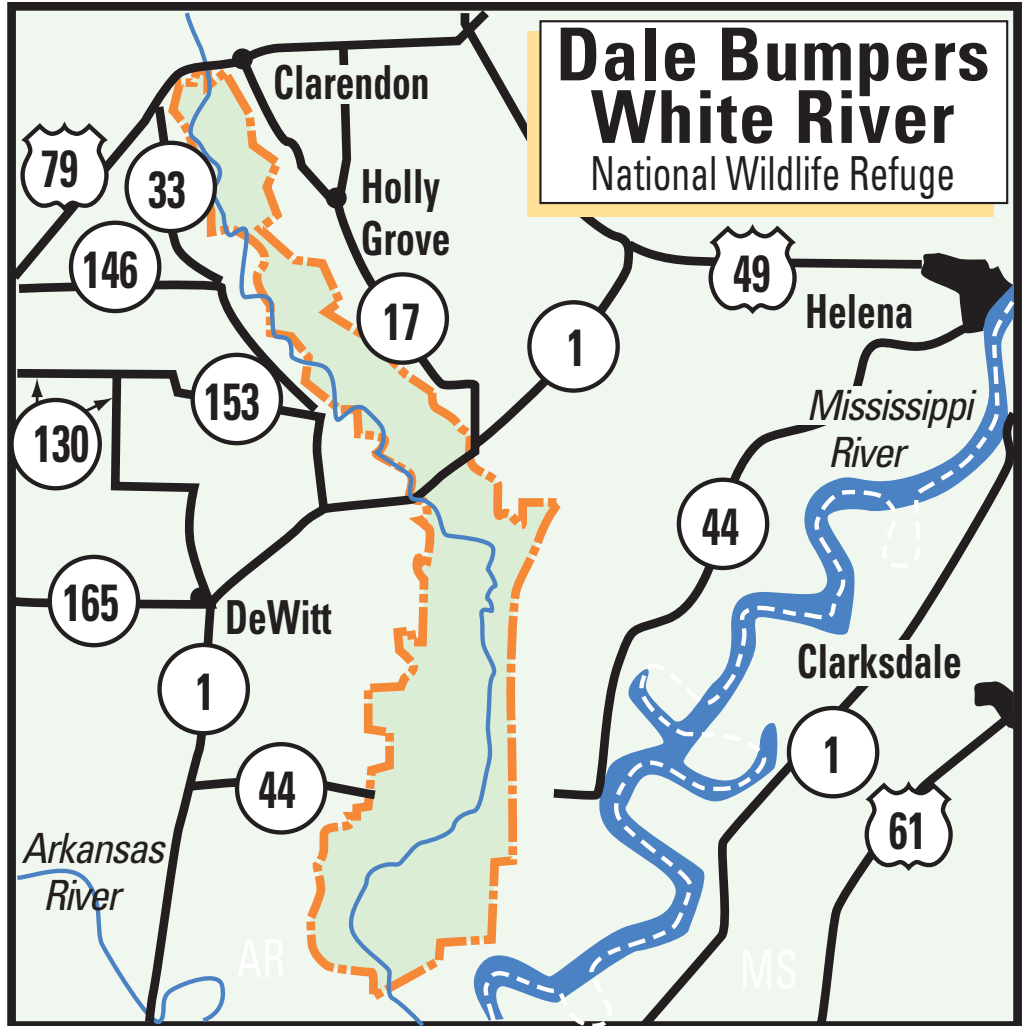
### Our Visitor Center is Open

Monday – Friday, 8 am – 4 pm.

For general refuge information please call 870/282 8200

To report violations call 870/509 3549 or 870/946 5975.

**Please don't litter.**



Vicinity Map



Scale in Miles

Hunting Seasons	North	South
Archery Deer	10/1 - 01/31/18	10/1 - 12/31
Youth Deer Hunt	11/4 - 11/5	11/4 - 11/5
Muzzleloader Deer (Bucks only)	10/21 - 10/23 (10/24 - 10/27)	10/21 - 10/23
Gun Deer (Modern firearm) (Bucks only)	11/11 - 11/13 (11/14 - 11/15)	11/11 - 11/13
Waterfowl	state season	Closed: see text under Waterfowl
Furbearer	11/18 - 01/31/18	12/01 - 12/15
Rabbit/Squirrel	9/1 - 1/31/18	9/1 - 11/30
Spring Turkey	state season	state season
Black Bear	closed	closed

# South Unit

(South of Arkansas Highway 1)



## Legend

- Refuge Boundary
- Area Closed to All Entry (see back)
- Area Closed to All Entry November 1–February 28
- Waterfowl Hunt Areas
- Area Closed to All Hunting
- Kansas Lake Area-Closed to All Entry December 1-February 28
- Refuge Lands Not Open to the General Public for Hunting, Fishing or Trapping
- Private Land Not Open to the General Public
- Gravel roads
- Paved roads
- Levee
- Gas Pipeline
- Powerline
- ▲ Designated Camping Areas
- ⚓ Improved Boat Ramp
- 👤 Visitor Center
- Railroad
- Potlatch Conservation Education Center

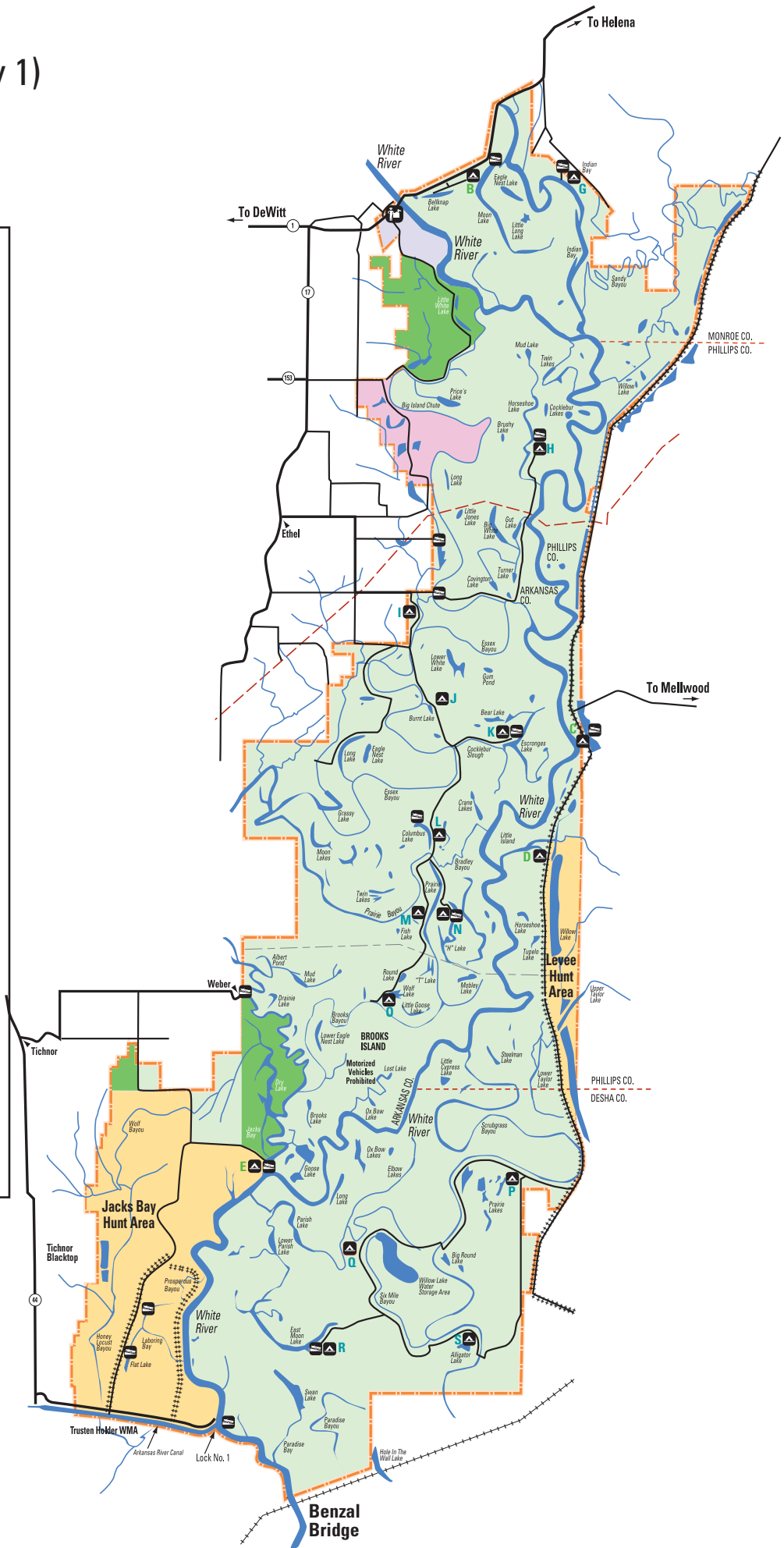
### Open March 1-Dec. 15

- G** Indian Bay
- H** Horseshoe Lake
- I** Smokehouse Hill\*
- J** Burnt Lake
- K** Escronges Lake
- L** Columbus Lake
- M** Prairie Lake
- N** 'H' Lake
- O** Wolf Lake
- P** Prairie Lakes\*
- Q** Six Mile Camp
- R** East Moon Lake
- S** Alligator Lake

\* Open through Dec. 31

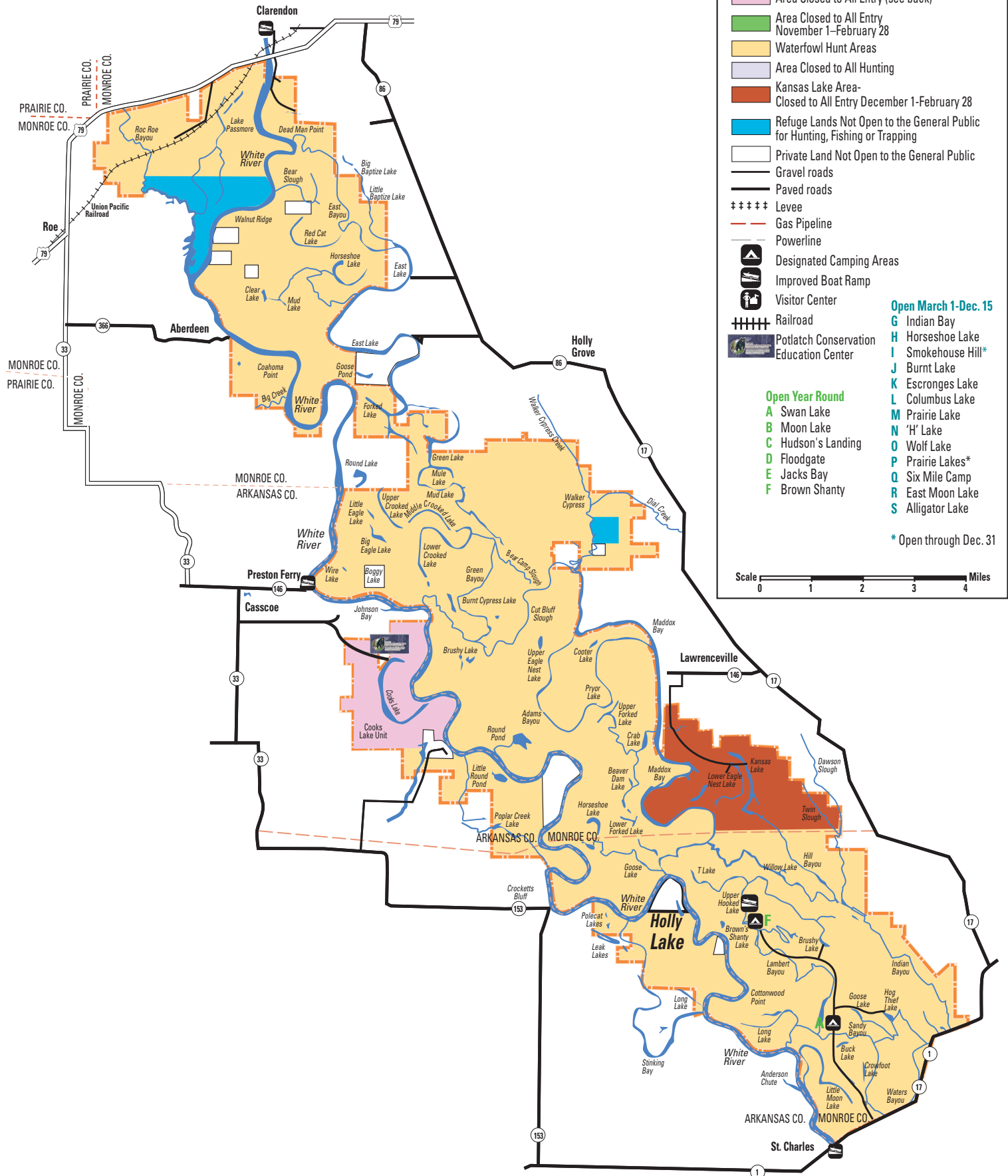
### Open Year Round

- A** Swan Lake
- B** Moon Lake
- C** Hudson's Landing
- D** Floodgate
- E** Jacks Bay
- F** Brown Shanty



# North Unit

(North of Arkansas Highway 1)



### Legend

- Refuge Boundary
  - Area Closed to All Entry (see back)
  - Area Closed to All Entry November 1–February 28
  - Waterfowl Hunt Areas
  - Area Closed to All Hunting
  - Kansas Lake Area-Closed to All Entry December 1-February 28
  - Refuge Lands Not Open to the General Public for Hunting, Fishing or Trapping
  - Private Land Not Open to the General Public
  - Gravel roads
  - Paved roads
  - Levee
  - Gas Pipeline
  - Powerline
  - Designated Camping Areas
  - Improved Boat Ramp
  - Visitor Center
  - Railroad
  - Potlatch Conservation Education Center
- 
- Open March 1-Dec. 15**
- G** Indian Bay
  - H** Horseshoe Lake
  - I** Smokehouse Hill\*
  - J** Burnt Lake
  - K** Escronges Lake
  - L** Columbus Lake
  - M** Prairie Lake
  - N** 'H' Lake
  - O** Wolf Lake
  - P** Prairie Lakes\*
  - Q** Six Mile Camp
  - R** East Moon Lake
  - S** Alligator Lake
- \* Open through Dec. 31
- 
- Open Year Round**
- A** Swan Lake
  - B** Moon Lake
  - C** Hudson's Landing
  - D** Floodgate
  - E** Jacks Bay
  - F** Brown Shanty
- 
- Scale 0 1 2 3 4 Miles