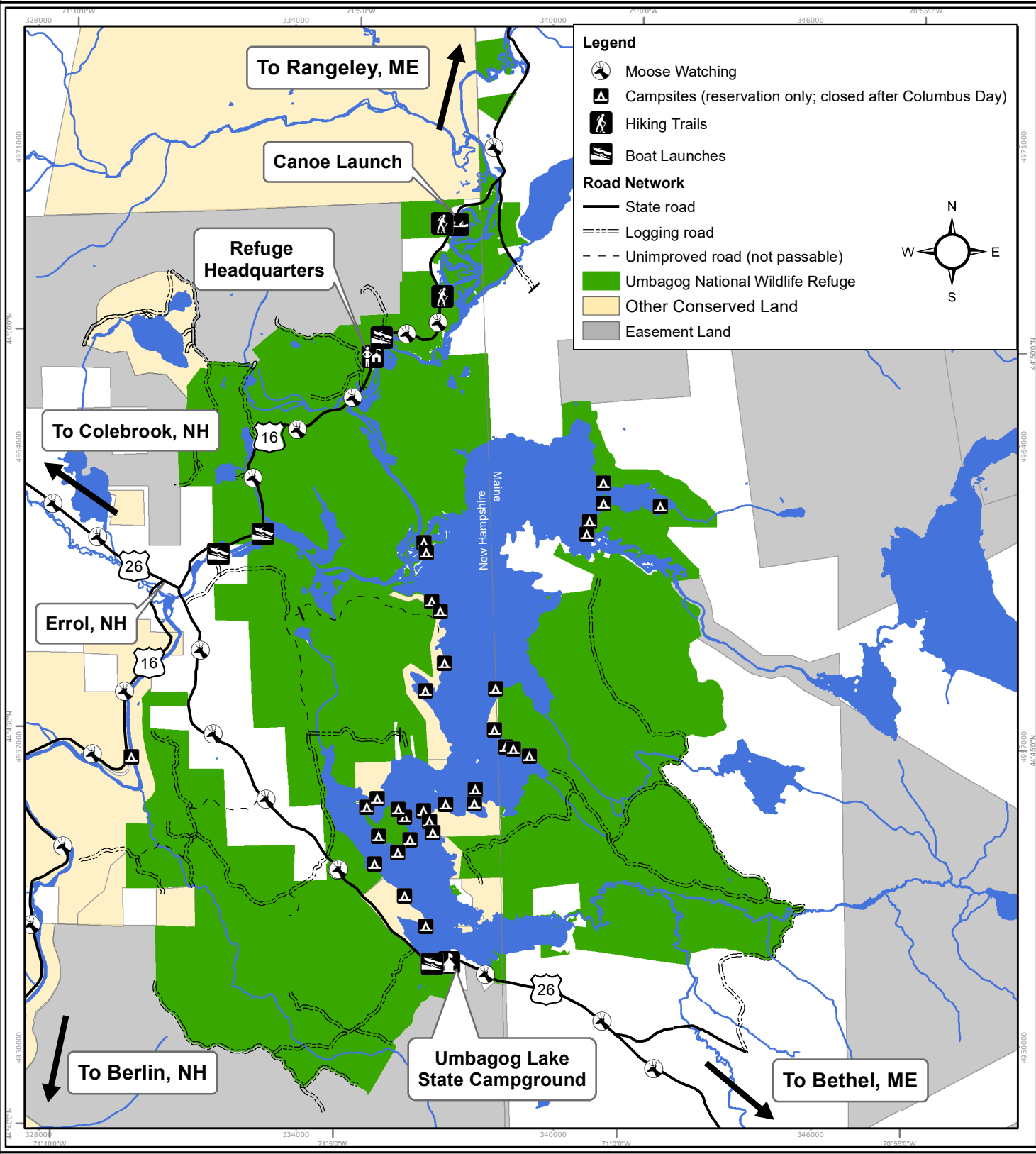




U.S. Fish & Wildlife Service

Umbagog National Wildlife Refuge



Map Projection: NAD_1983_UTM_Zone_19N
 Graticule Units: degrees, minutes, seconds
 Map Grid Unit: Meter
 G:\GisData\Public_Use\Maps\2sided_refuge_map\refuge_map_sideA.mxd



U.S. Fish & Wildlife Service

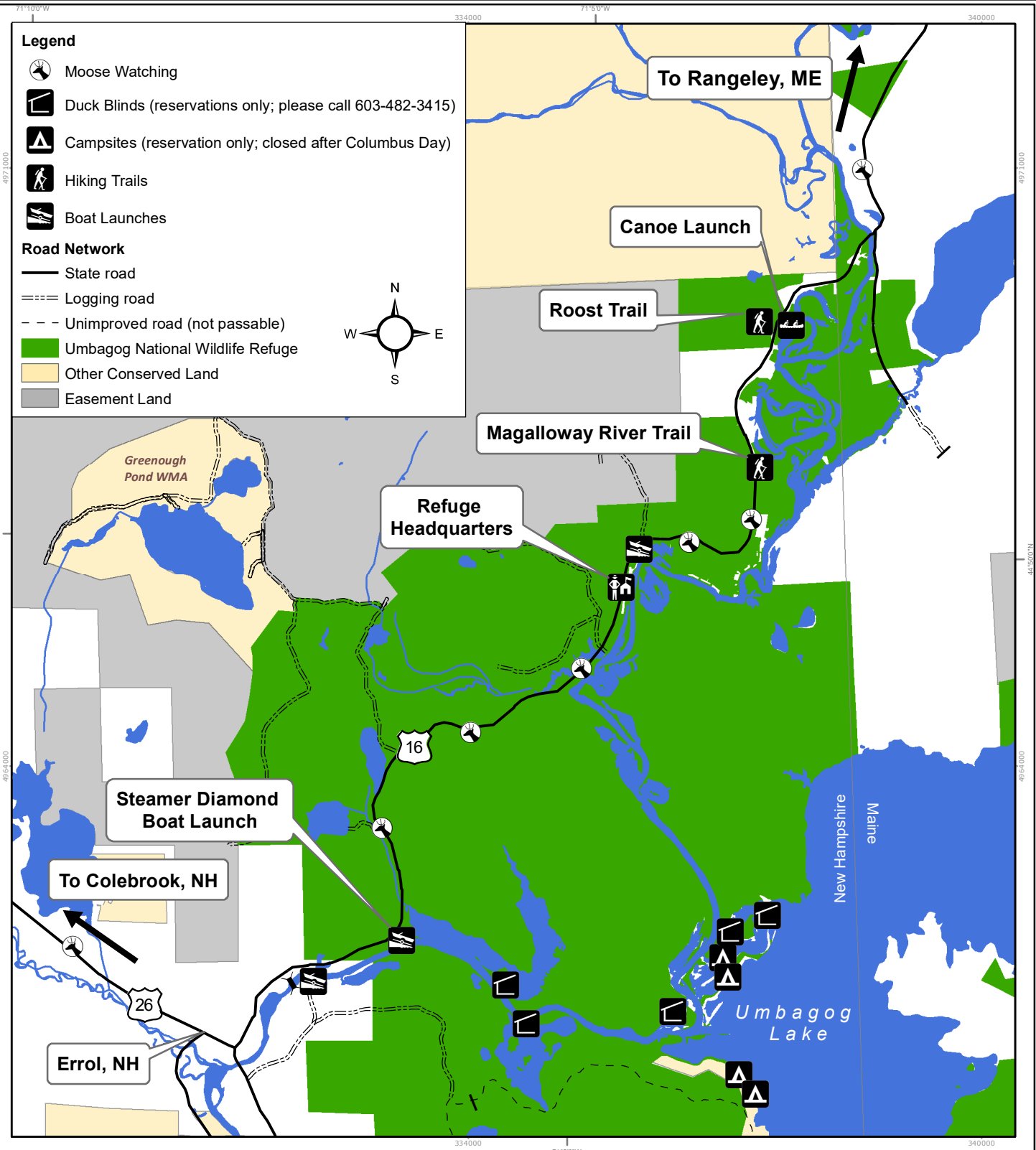
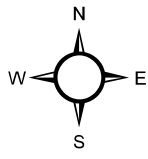
Umbagog National Wildlife Refuge

Legend

- Moose Watching
- Duck Blinds (reservations only; please call 603-482-3415)
- Campsites (reservation only; closed after Columbus Day)
- Hiking Trails
- Boat Launches

Road Network

- State road
- Logging road
- Unimproved road (not passable)
- Umbagog National Wildlife Refuge
- Other Conserved Land
- Easement Land



Map Projection: NAD_1983_UTM_Zone_19N
 Graticule Units: degrees, minutes, seconds
 Map Grid Unit: Meter
 G:\GisData\Public_Use\Maps\2sided_refuge_map\refuge_map_sideB.mxd

