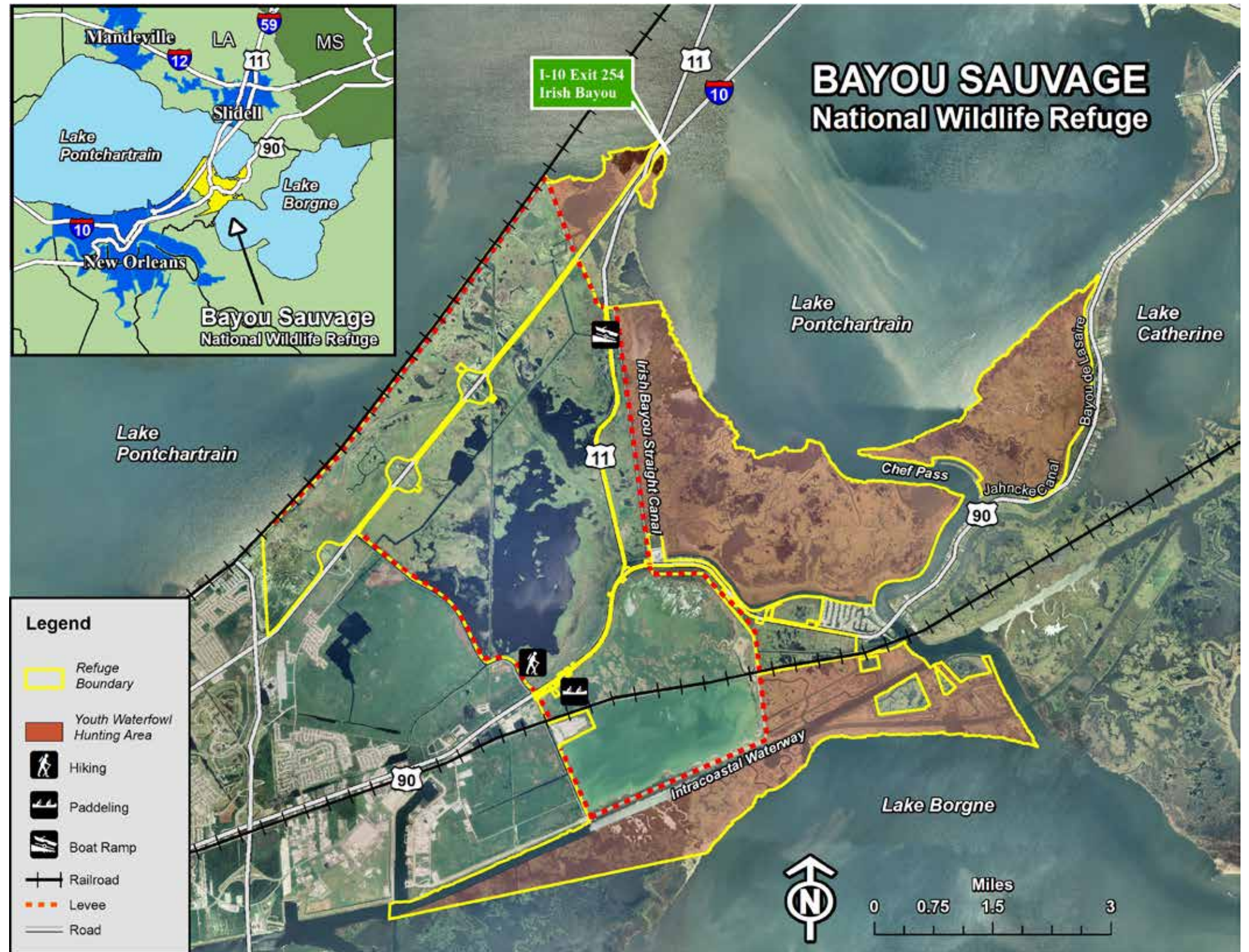


Only sport fishing with a hand-held rod and reel or hand-held rod and line is permitted. Bait shrimp may be taken with cast nets 8 feet in diameter or less. Crawfish can be taken (up to 100 pounds per person) with wire nets up to 20 inches in diameter. Recreational crabbing is permitted with a limit of 12 dozen per person. Fishing, crabbing and crawfishing equipment must be attended at all times.

**The following activities are prohibited on the refuge:**

- Feeding wildlife
- Motorized vehicles on any levee
- Horseback riding
- Air-thrust boats, aircraft, mud boats, and air-cooled propulsion engines except, air-cooled propulsion engines may be used to traverse the refuge through the Intracoastal Waterway, the Irish Bayou Straight Canal, the Jahncke Canal and Bayou de Lesaire
- Any person or group to act as a hunting guide, outfitter, or in any other capacity that any other individual(s) pays or promises to pay directly or indirectly for services rendered to any other person or persons hunting on the refuge, regardless of whether such payment is for guiding, outfitting, lodging, or club membership
- The use of open fires
- Cutting, removing, or damaging trees and other plant matter
- Target shooting
- Camping
- The use of any type of material used as flagging or trail markers, except bright eyes
- Hunting within 500 feet of any residence or structure adjacent to the refuge
- Hunting within 200 feet of any road, railroad, levee, water control structure, designated public use trail, designated parking area, or other designated public use facilities
- All commercial fin fishing and shell fishing
- The use of trotlines, limb lines, slat traps, gar sets, nets or alligator lines





# Bayou Sauvage

## National Wildlife Refuge

### Hunting and Fishing Regulations

#### 2013 - 2014



### Bayou Sauvage National Wildlife Refuge

Bayou Sauvage National Wildlife Refuge, established in 1990, is located in Orleans Parish Louisiana. The refuge is approximately 25,000 acres and is located entirely within the city limits of New Orleans, making it the nation's largest urban refuge. The purpose of this refuge is to protect one of the last remaining marsh areas adjacent to Lakes Pontchartrain and Borgne, to provide habitat for fish, wildlife, and plants, and to offer opportunities for fish and wildlife-oriented recreation. Fresh marsh, tidal estuaries and hybrid maritime/bottomland hardwood forest provide natural habitats for a wide variety of wildlife. Wading birds, waterfowl, migratory songbirds, various fish species, crab, shrimp, alligators, raccoons and white-tailed deer are just some of the refuge's residents. Public use opportunities include bird watching, and photography, hiking, paddling, wildlife observation, fishing, youth waterfowl hunting, and environmental education.

### General Regulations

Hunting, fishing, and public use regulations are designed to provide safe recreational opportunities through wise use of renewable wildlife resources. Hunting and fishing are permitted in accordance with Federal regulations governing public use on National Wildlife Refuges as set forth in Title 50, Code of Federal Regulations. Hunting and fishing will be in accordance with applicable State of Louisiana regulations subject to the following conditions:

The refuge is open one-half hour before legal sunrise until one-half hour after legal sunset, except for specific hunting regulations (see paragraphs 5 and 6 of Migratory Game Bird Hunting in this brochure).

Only outboard motors 25 horsepower or less are permitted in waterways inside the Hurricane Protection Levees. There is no size restriction on outboard motors on waterways outside the Hurricane Protection Levees.

Persons possessing, transporting, or carrying firearms on National Wildlife Refuges must comply with all provisions of state and local law. Persons may only use (discharge) firearms in accordance with refuge regulations (50 CFR 27.42 and specific refuge regulations in 50 CFR Part 32).

All portions of the refuge outside the Hurricane Protection Levee are closed to public entry other than waterfowl hunting until 12 noon from November 1 – January 31 and during the state teal season.

### Migratory Game Bird Hunting

Hunting of waterfowl (duck, goose, and coot) is permitted on designated areas of the refuge in accordance with state and federal regulations subject to the following conditions:

All hunters must possess a refuge permit. This brochure serves as a permit when signed and in your possession. This brochure may also be found at: <http://www.fws.gov/bayousauvage/>

All waterfowl and coot hunting are considered youth hunts. Youth hunter age, adult supervision age, and hunter education requirements are defined by state regulation. Youth under the age of 16 must be supervised by an adult. The youth must actively participate in such hunt for the express purpose of harvesting game.

The supervising adult may participate in the hunt however, only one supervising adult is allowed per youth. The supervising adult shall maintain visual and voice contact with the youth at all times. The supervising adult is responsible for ensuring that youth hunters do not engage in conduct that would constitute a violation of refuge regulations.

Waterfowl hunting is permitted until 12 p.m. (noon) on Wednesday, Thursday, Saturday, and Sunday, during the State waterfowl hunting season, including early teal season, youth waterfowl hunt season, or other such special seasons which may be promulgated by law or statute. Waterfowl hunting is not allowed after the close of state duck season.

Hunters may not enter the refuge prior to 4 a.m. on the day of the hunt and must remove all decoys, blinds, and equipment from the hunting area no later than 1 p.m.

Waterfowl hunting is only allowed on designated portions of the refuge outside the Hurricane Protection Levee (see map).

Specific State regulations apply during the State youth waterfowl hunting days (*i.e.*, adults may not hunt).

The use of dogs is permitted only to locate, point, and retrieve while hunting.

Only non-toxic shot is allowed while hunting.

### Sport Fishing and Shell Fishing

Sport fishing and shell fishing are allowed on the refuge in accordance with state regulations subject to the following conditions:

Sport fishing and shell fishing are permitted year-round inside the Hurricane Protection Levee and only after 12 p.m. outside the Hurricane Protection Levee from November 1 through January 31, and during the state teal season.

Southeast Louisiana Refuges  
61389 Highway 434  
Lacombe, LA 70445  
985/882 2000  
<http://www.fws.gov/bayousauvage/>

U.S. Fish and Wildlife Service  
1 800/344 WILD

August 2013



### Bayou Sauvage Hunting Permit

When signed and carried, this serves as your permit for all refuge hunts and acknowledges your understanding of the regulations contained herein. Expires June 30, 2014.

\_\_\_\_\_  
Signature (permits are not transferable)