

Red River National Wildlife Refuge

National Wildlife Refuge Public Use Regulations 2018-2019

Introduction

Red River National Wildlife Refuge is one of over 550 national wildlife refuges. The primary objective of a national wildlife refuge is to provide habitat for the conservation and protection of all species of wildlife. The harvest of animals is one tool used to manage fish and wildlife populations. Carefully managed hunting and fishing help maintain these populations at a level compatible with the environment, provide wholesome recreational opportunities, and permit the use of valuable renewable resources.

The regulations in this pamphlet supplement the general regulations governing hunting and fishing on national wildlife refuges as set forth in Title 50, Code of Federal Regulations. Hunting and fishing will be in accordance with applicable state regulations except as noted below.

Respect the rights of others using the refuge, take pride in America and the refuge resources, and report violations promptly.

Wildlife Crime Tipline:
1-844-FWS-TIPS (397-8477)
FWS_TIPS@FWS.GOV

By hunting or fishing on the refuge, you are subject to fish and game inspections.

Red River National Wildlife Refuge
150 Eagle Bend Point
Bossier City, LA 71112
318/742 1219
http://www.fws.gov/refuge/red_river
or find us on Facebook

August 2018

Signs and Boundaries

Signs are useful tools in regulating the use of a public area. The wording applies to the areas behind the signs. Pay attention to the signs, watch for boundary corners, and check your location with the maps.



This sign marks the refuge boundary. Public entry by foot is generally authorized at all times on the refuge. However, other refuges in the system may have different regulations concerning general entry. Always know the regulations before entering.



This sign means that the area is closed to all entry. Do not trespass behind this sign for any reason other than an emergency.



This sign means no motorized vehicles beyond this point. This applies to all cars, trucks, jeeps, all-terrain vehicles, and motorcycles. Non-motorized bicycles are allowed.



This sign marks the boundaries of the waterfowl hunting areas on the refuge.

Prohibited Activities

- Using motorized vehicles off the designated public access roads. This includes motorcycles, ATVs, golf carts, jeeps, cars, trucks, etc. Parking is restricted to parking areas and along public access roads which are shown on map.
- Possessing or using alcoholic beverages
- Littering
- Overnight parking
- Camping
- Open fires
- Searching for or removing any object of antiquity, including arrowheads, pottery or other artifacts
- Using horses and mules
- Target practice
- Taking of wildlife (including frogs, turtles and mollusks) and plants other than specified in refuge regulations
- Leaving personal property (includes boats, blinds, decoys) unattended, except deer stands with owner's name, address, and phone number on the stand
- Driving or screwing a nail, spike, or other metal object into a tree or hunting from any tree in which a nail, spike, or other metal object has been driven or screwed

Refuge Hunting/Fishing Permit 2018-2019
Red River National Wildlife Refuge

I have read and understand these regulations.

Signature of hunter/angler

This permit is valid only when signed and must be carried on hunter's person. (Cut out permit if desired)



Prohibited Activities - continued

- Possession or distribution of bait while in the field and hunting with the aid of bait, including any grain, salt, mineral, or any non-natural occurring food attractant on the refuge
- Leaving flagging or other trail markers, except bright eyes
- Taking or possession of waterfowl, big or small game, fish, or plants by use of a guide or outfitter is prohibited
- Participating in deer drives
- Possession of deer or gobbler decoys
- Hunting on HQ Unit
- Using trotlines, limb lines, yo-yos, set lines, jugs, noodles, traps or nets
- Commercial fishing
- Boating and fishing on Lake Caroline on the Headquarters Unit during June, July, and November-January
- Running gas-powered boat motors

General Fishing and Boating Regulations

A signed refuge fishing permit (front of this brochure) must be carried by all anglers.

Use caution when operating boats or wading in flooded areas of the refuge. Obstructions/obstacles may be submerged and unmarked. All boats must comply with state law and display proper navigation lights from sunset to sunrise.

Rod and reel fishing on Red River National Wildlife Refuge is permitted during daylight hours only, **except when closed during November - January**. Only electric (trolling) motors are allowed to operate on refuge waterbodies. Licenses, limits and boating safety requirements are the same as those adopted by the Louisiana Department of Wildlife and Fisheries. In addition, **Boating/Fishing is also prohibited on Lake Caroline on the Headquarters Unit during June and July**.

LIFE JACKETS save lives. Wear them! All children under 16 must wear a life jacket.

General Hunting Regulations

Permits

A signed refuge hunting permit (front of this brochure) must be carried by all hunters.

Restricted Areas

Hunting is permitted only in certain areas as shown on the hunting map. No hunting is allowed within the maintained rights-of-way of the roads, ATV trails, hiking trails, gas pipelines and electric transmission lines, etc. and within 150 feet of a residence, building or designated public facility. No hunting on or within 50 feet of an oil or gas well.

Hunters may enter the refuge no earlier than 4 am and must exit no later than one hour after legal shooting hours unless otherwise specified.

Firearms and Ammunition

It is the responsibility of visitors to understand and comply with all applicable state, local and federal firearms laws before entering the refuge. For public safety reasons, hunters are prohibited from discharging a firearm within 100 feet of the centerline of public roads, maintained refuge roads or rights-of-way, including ATV trails and electric transmission lines. Target practice is prohibited on the refuge. Firearm ammunition, used for hunting, larger than a .22 caliber rim-fire, shotgun slug or buckshot are prohibited. **Lead shot is prohibited for all hunting.**

ATV Regulations

ATVs are permitted on trails designated for their use (see map). The trails are marked with signs and will be closed **March 1 through August 31**. ATVs are prohibited from one hour after legal shooting hours to 4 am. **ATV tires are restricted to those no larger than 25 x 12 with a maximum 1" lug height and a maximum allowable tire pressure of 7 psi, as indicated on the tire by the manufacturer. ATVs cannot exceed 750 lbs., 85" in length and 48" in width. Use of all other ATVs, UTVs or ATV tires is prohibited on the refuge.**

Deer Stands

Only portable deer stands may be used. Portable deer stands may not be left on the Refuge unless the stands are removed from trees and left in a non-hunting position (a non-hunting position is one in which a hunter could not hunt from the stand in its present position).

Deer stands may be erected one day before the deer archery season and must be removed from the refuge within one day after this season closes. Deer stands left on the Refuge must have the owners name, address, and phone number clearly printed on the stand. Hunters may place only one deer stand per unit. Free standing blinds must be disassembled when not in use. Stands left will not reserve hunting sites for the owner or user.

All portable stands, blinds, tripods, etc. found unattended in a hunting position or untagged will be confiscated and disposed of. The Refuge is not responsible for unattended stands left on the area.

Youth

Youths are generally defined as those individuals 17 years of age or younger except for migratory bird hunts, youths are defined as 15 years old or under. Youths under the age of 16 may hunt without hunter education certification if they are accompanied by and under direct supervision of a person born before September 1, 1969 that has a valid hunting license; or they are accompanied by and under the direct supervision of a person who is 18 years of age or older and has proof of successful completion of a hunter education course approved by Louisiana Department of Wildlife and Fisheries. Direct supervision means that the person being supervised is within a normal audible voice contact and in direct line of sight of the supervising person at all times while hunting.

The supervising adult is responsible for ensuring that youth hunters do not engage in conduct that would constitute a violation of refuge regulations.

Disabled

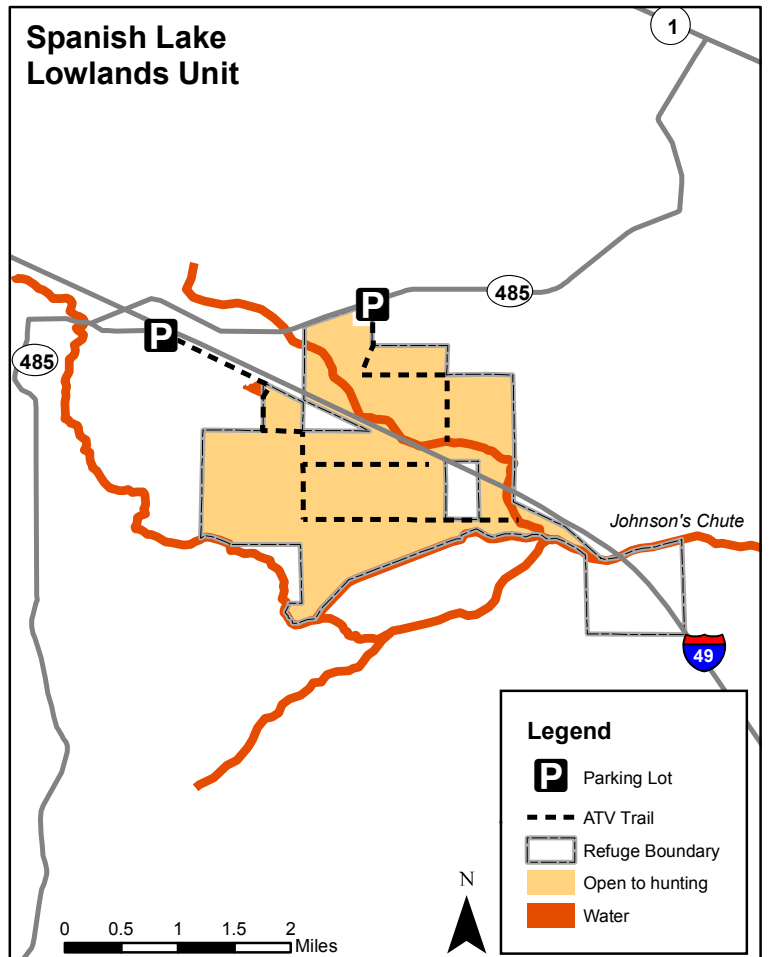
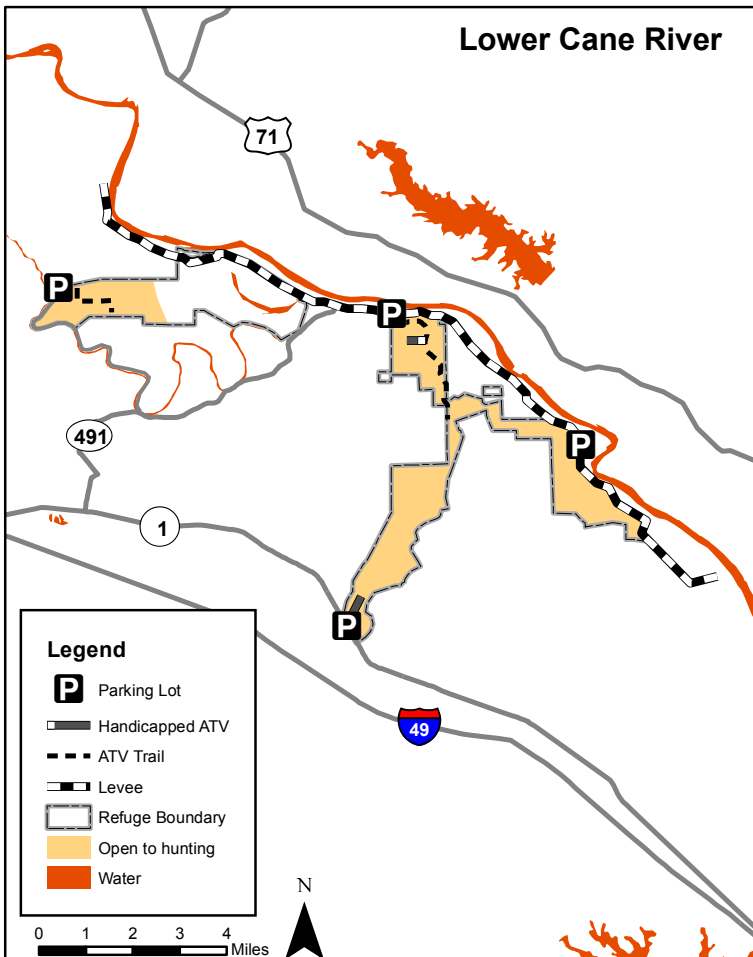
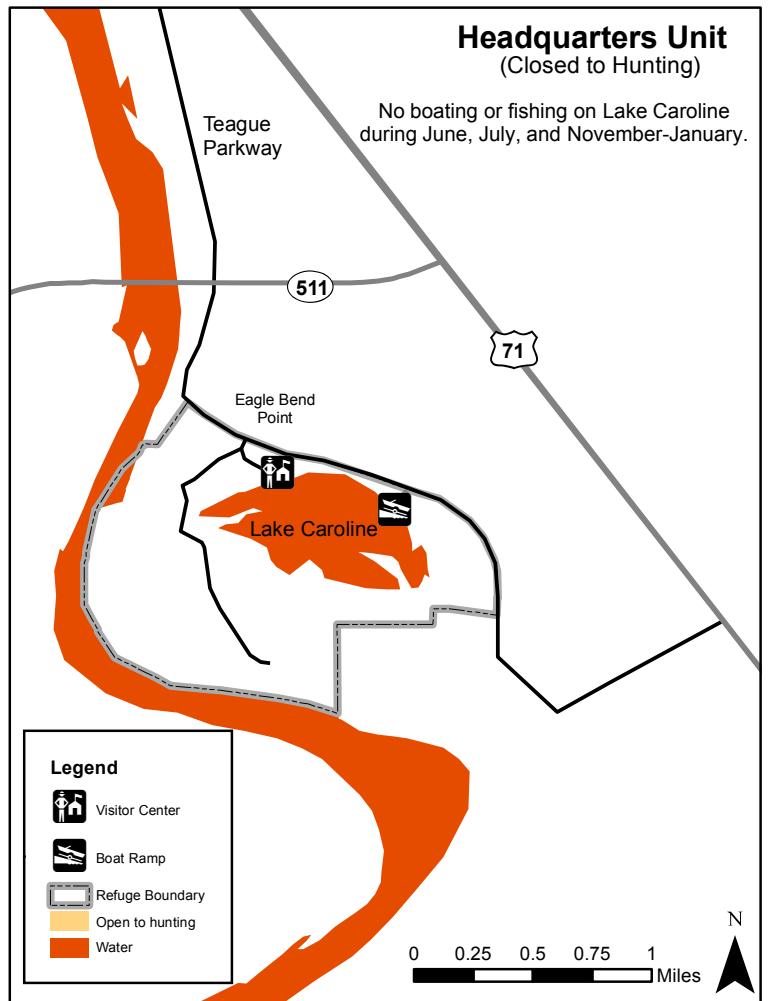
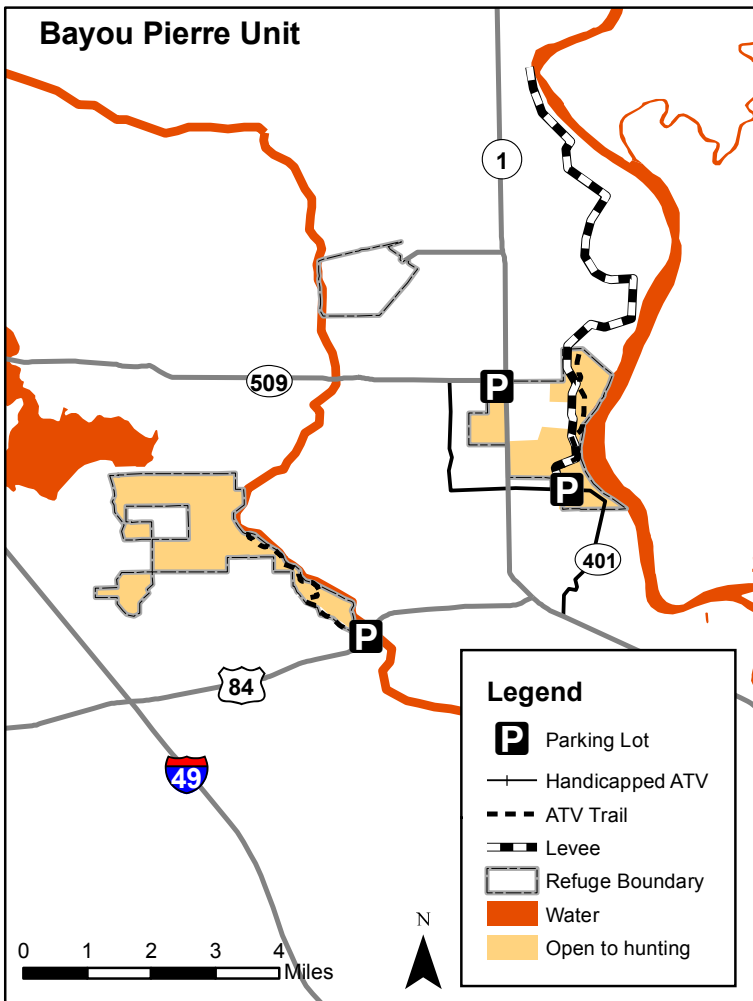
Use of handicapped ATV trails are restricted to LDWF physically challenged ATV permittees. You must have your LDWF physically challenged hunter program permit with you to use these trails.

Safety

Although highly recommended, the International Bowhunters Education certification is no longer required to archery deer hunt on the refuge. Hunters participating in the special dog season for rabbits are required to wear a "hunters orange" cap.

2018-2019 Hunting Seasons/Regulations

Type	Season Dates	Specific Regulations
Ducks, Geese, Coot, Snipe	State season (see WLF.Louisiana.gov)	Hunting until noon in designated area. See map. Recognized breeds of retrievers may be used. Construction of and/or hunting from permanent blinds is prohibited. Boats, blinds, and decoys may not be left unattended.
Youth Waterfowl Lottery Hunts	Bayou Pierre Unit. Limited hunts. Dates to be determined when seasons are set.	See Refuge website for application and regulations. www.fws.gov/refuge/red_river
Quail, Woodcock	State season (see WLF.Louisiana.gov)	Hunting in designated area only. Recognized breeds of bird dogs may be used for hunting.
Dove	First 2 days of opening split of state season.	Hunting in designated areas only.
Squirrel, Rabbit	State season, except spring squirrel season closed.	Hunting in designated areas only. Dogs may only be used after December 31.
Raccoon, Opossum	December 1 – January 31, for night hunting. May be taken during daylight hours of rabbit and squirrel season.	Hunting in designated areas only. Raccoons taken on the refuge may not be sold for human consumption.
Deer Archery	State season (see WLF.Louisiana.gov)	Hunting in designated areas only. Limit of one deer per day, either sex. Possession or distribution of bait while in the field and hunting with the aid of bait is prohibited, including any grain, salt, mineral, or any non-natural occurring food attractant on the refuge. All state approved archery equipment is allowed. Possession or use of pods is prohibited.
Deer Gun Hunting	CLOSED	
Turkey	CLOSED	
Incidental Species: Coyotes, Beaver, Nutria, Hogs	Hunters may take incidental species during a refuge hunt.	Hunting in designated areas only. No bag limit. May be taken with weapons legal for particular season.
Crawfishing	March 15 - July 31	Crawfish nets only. Daylight hours only. Nets cannot be left overnight. 100 lbs./ person/day.
Fishing	All refuge waters closed to fishing November – January. Lake Caroline also closed June-July.	State limits (see WLF.Louisiana.gov)



More detailed maps available at refuge website.

Vicinity Map

