

# Dale Bumpers White River South Unit

(South of Arkansas Highway 1)



## Legend

- Refuge Boundary
- Area Closed to All Entry (see back)
- Area Closed to All Entry November 1–February 28
- Waterfowl Hunt Areas
- Area Closed to All Hunting
- Kansas Lake Area-Closed to All Entry December 1-February 28
- Refuge Lands Not Open to the General Public for Hunting, Fishing or Trapping
- Private Land Not Open to the General Public
- Gravel roads
- Paved roads
- Levee
- Gas Pipeline
- Powerline
- Designated Camping Areas
- Improved Boat Ramp
- Visitor Center
- Railroad
- Potlatch Conservation Education Center

### Open March 1-Dec. 15

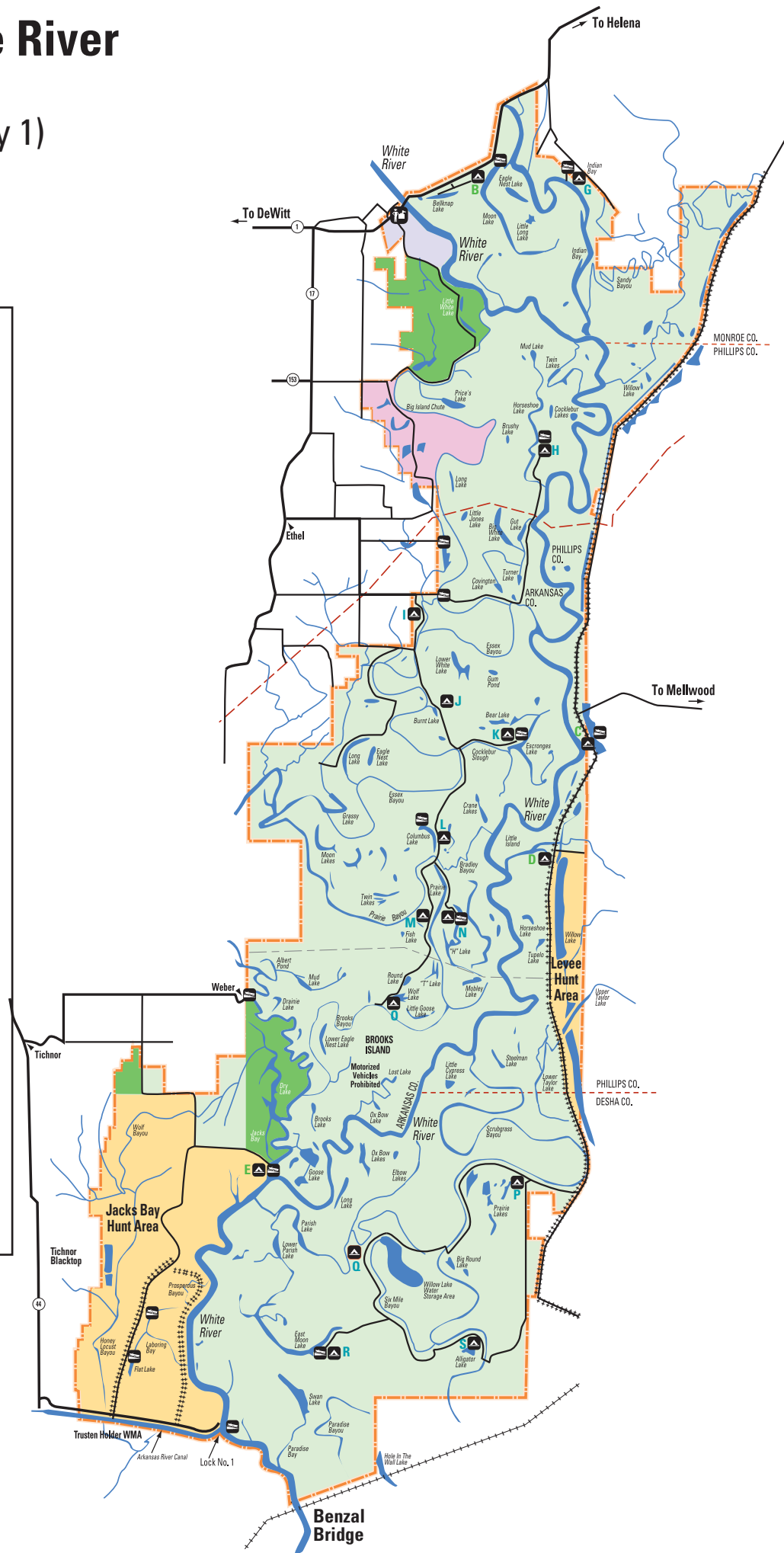
- G** Indian Bay
- H** Horseshoe Lake
- I** Smokehouse Hill\*
- J** Burnt Lake
- K** Escronges Lake
- L** Columbus Lake
- M** Prairie Lake
- N** 'H' Lake
- O** Wolf Lake
- P** Prairie Lakes\*
- Q** Six Mile Camp
- R** East Moon Lake
- S** Alligator Lake

\* Open through Dec. 31

### Open Year Round

- A** Swan Lake
- B** Moon Lake
- C** Hudson's Landing
- D** Floodgate
- E** Jacks Bay
- F** Brown Shanty

Scale 0 1 2 3 4 Miles



# Dale Bumpers White River North Unit

(North of Arkansas Highway 1)

