



# The Louisiana Black Bear

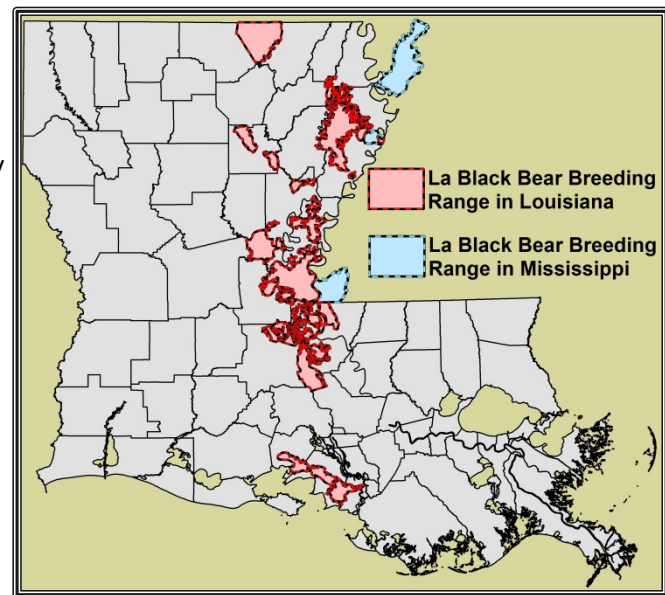
## *Recovered and Delisted*



## *Post-Delisting Conservation Considerations*

The Louisiana black bear (*Ursus americanus luteolus*) was listed as a threatened subspecies in 1992. Due to recovery, it was officially removed from the List of Endangered and Threatened Species on March 11, 2016 (effective April 11, 2016); critical habitat designation for this subspecies has also been withdrawn. Because the Louisiana black bear is no longer protected under the Endangered Species Act (ESA), *consultation with the U.S. Fish and Wildlife Service (Service) is not required for this subspecies.* The Louisiana black bear remains protected under Louisiana state law, and the Louisiana Department of Wildlife and Fisheries (LDWF) will continue to actively manage this subspecies. The Service and LDWF have developed a plan to extensively monitor the status of the Louisiana black bear for 7 years following its delisting (until year 2022). That monitoring will be undertaken to detect any potential population decreases or threat increases that may warrant the implementation of measures to ensure that the Louisiana black bear remains secure from risk of extinction.

The Louisiana black bear is primarily associated with forested wetlands, but will utilize a variety of other habitat types, including scrub-shrub, marsh, spoil banks, and upland forests. They normally den from December through April and preferred den sites include large, hollow trees (36 inches or more in diameter at breast height) with sufficiently sized openings that allow access to interior cavities. Although ESA consultation is no longer required regarding project impacts on this subspecies, in the interest of conserving the Louisiana black bear, projects proposed in areas of the state that are inhabited by bears should be designed to avoid adversely affecting this subspecies or its habitat. (A current Louisiana black bear breeding area map is located at:



[https://www.fws.gov/Lafayette/pdf/LA\\_Black\\_Bear\\_Breeding\\_Habitat\\_Map.pdf](https://www.fws.gov/Lafayette/pdf/LA_Black_Bear_Breeding_Habitat_Map.pdf).)

Conservation measures for the Louisiana black bear include:

- reducing the footprint of proposed actions to the maximum extent feasible
- avoiding impacts to potential den trees that are 36 inches or more in diameter at breast height
- implementing programs to prevent the habituation of bears to human-associated food sources (e.g., use of “bear-proof” waste disposal containers or daily removal of food and garbage)
- avoiding vegetative clearing during the black bear denning season (i.e., December 1 through April 30).

For additional information regarding the Louisiana black bear and project-specific conservation measures that may be required by the LDWF, please contact Maria Davidson (Large Carnivore Program Manager) at (337) 262-2080 or [mdavidson@wlf.la.gov](mailto:mdavidson@wlf.la.gov).