

Idaho Fish & Wildlife Office Landscape Conservation

Selkirk Cabinet-Yaak Priority Landscape

The Idaho Fish and Wildlife Office (IFWO) has identified the Selkirk Cabinet-Yaak Ecosystem in the northern panhandle of Idaho as one of four Priority Landscapes. Priority Landscapes have been selected with the purpose of prioritizing the IFWO's efforts to achieve the most significant and long lasting conservation gains. This landscape contains natural resources and unique habitats that are important to state, Tribal, and federal managers as well as numerous stakeholders and the Province of British Columbia. The Selkirk Cabinet-Yaak contains vast undeveloped mountains and forests that have a unique character in Idaho and are part of a landscape that connects the Greater Yellowstone Ecosystem and Idaho's central wilderness areas to the Canadian Rockies. This connectivity provides migration pathways in the face of future climate change. The area supports populations of large, wide-ranging mammals such as grizzly bear, fisher, and moose, as well as unique aquatic species such as burbot and the Kootenai white sturgeon. It is the presence of such iconic species which sets this landscape apart and makes it worthy of elevated conservation efforts.

While both forestry and mineral extraction are important local and regional industries, the area attracts many recreationists who come to the area to hunt, fish, boat, ski, and hike. The panhandle has a growing population of retirees and other residents who come for the quality of life and enjoy the natural beauty of the area.

The Selkirk Cabinet-Yaak Priority Landscape covers an estimated 2,700 square miles in north Idaho,



© Wikipedia

The Selkirk Cabinet-Yaak Priority Landscape of north Idaho includes wet, old-growth forests, an ecosystem unique in the Rocky Mountains. It supports iconic species such as woodland caribou, grizzly bear, fisher, and wolverine, and connects wild lands in Canada, Montana, and Washington.



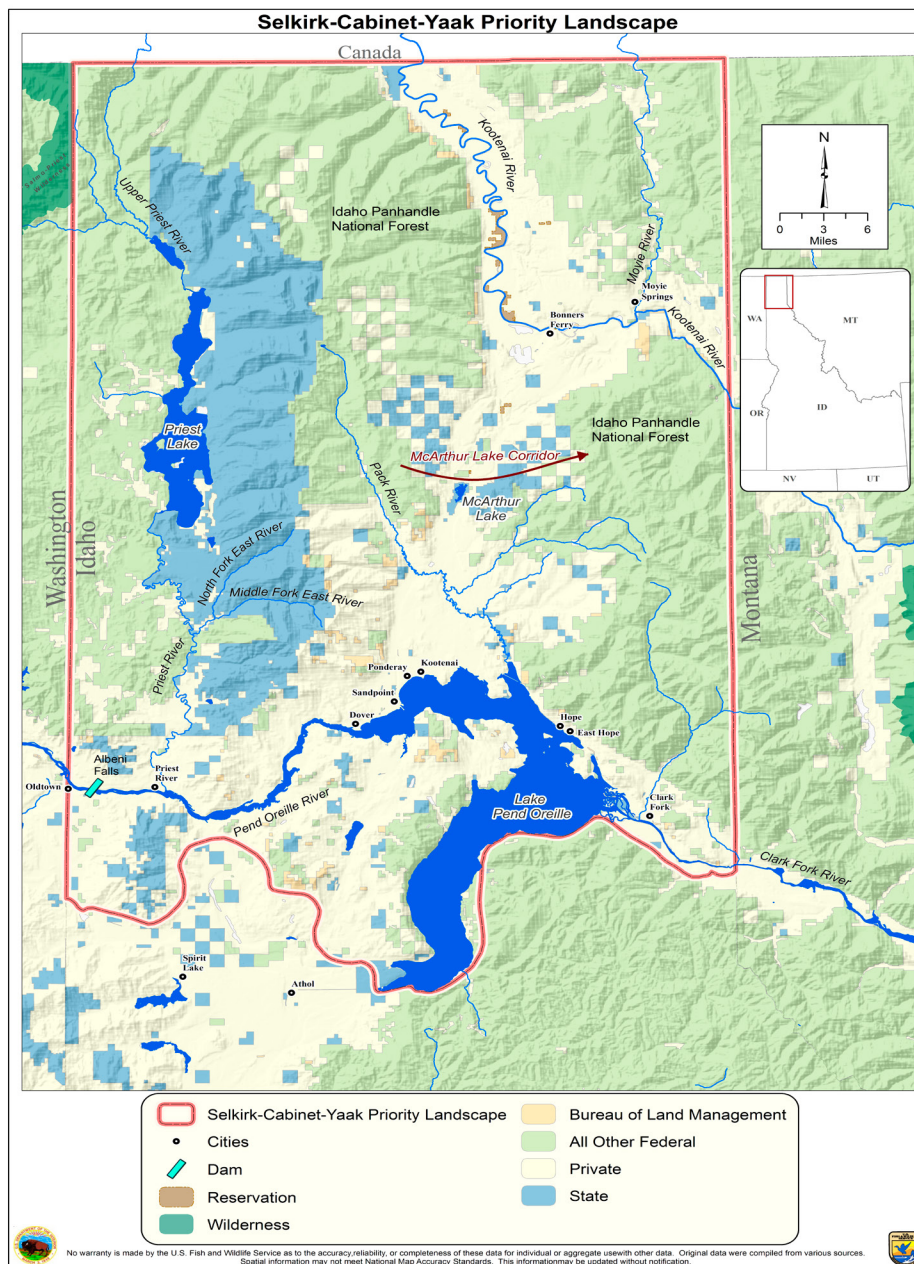
© Joel Sartore / National Geographic & Wade Fredenberg / USFWS

The federally threatened bull trout serves as an indicator of high quality, cold-water habitats in the Northern Rocky Mountains and the greater Northwest.

accounting for 3% of the state's total area. It abuts the Salmo-Priest Wilderness Area in Washington State, and is surrounded by other undeveloped wild lands. Kootenai Tribal lands are scattered throughout the Kootenai Valley along with numerous Wildlife Management Areas (Idaho Department of Fish and Game) and the Kootenai National Wildlife Refuge.

The IFWO has identified four conservation targets within this landscape: native salmonids of the Priest and Pend Oreille Basins; Selkirk Mountains Ecosystem; Kootenai Basin and watersheds; and riparian and wetland habitats throughout the landscape. Each target is addressed with a Landscape Strategy designed to protect and restore these habitats or target species within them. The four strategies identify 14 Priority Species, many of which are protected under the Endangered Species Act or other state or federal laws, serve as good indicators of habitat health, provide important habitat services, or serve as icons of these landscapes.

While IFWO's Landscape Strategies identify important conservation targets and needs in the Selkirk Cabinet-Yaak, these are intended as a starting point for dialog and planning with resource professionals engaged in management on this landscape. We seek to improve our strategies with their expertise, incorporating the conservation priorities of other partners. This collaboration will provide an opportunity to identify the most productive conservation actions and achieve their successful implementation.



The unique wet and mesic forests and mountains of the Selkirk Cabinet-Yaak Priority Landscape are predominantly managed by the state of Idaho and the Forest Service. The large valley bottoms within this landscape include private, state, and Tribal lands.

Priority Species identified in Selkirk Cabinet-Yaak

Priority Landscape:

American beaver	Kootenai white sturgeon
Bald eagle	Lewis's woodpecker
Bull trout	Rocky Mountain tailed frog
Canada lynx	Westslope cutthroat trout
Fisher	Whitebark pine
Grizzly bear	Willow flycatcher
Harlequin duck	Woodland caribou

For more information contact:

U.S. Fish & Wildlife Service
Idaho Fish & Wildlife Office
1387 South Vinnell Way, Suite 368
Boise, ID 83709
208/378-5243
208/378-5262 Fax
<http://www.fws.gov/idaho>



April 2016