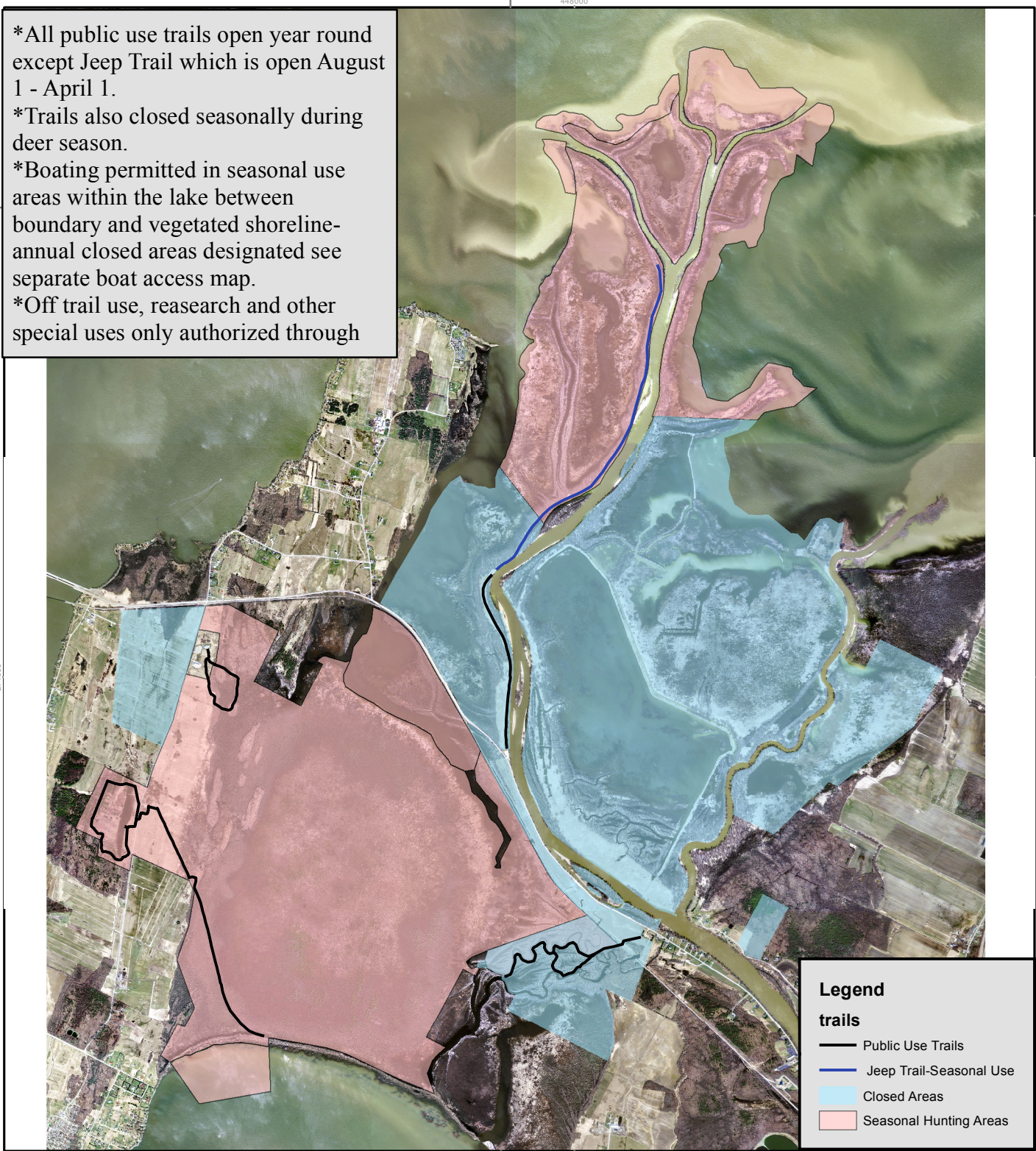




# Open and Closed Areas - Missisquoi NWR

\*All public use trails open year round except Jeep Trail which is open August 1 - April 1.  
 \*Trails also closed seasonally during deer season.  
 \*Boating permitted in seasonal use areas within the lake between boundary and vegetated shoreline-annual closed areas designated see separate boat access map.  
 \*Off trail use, reasearch and other special uses only authorized through

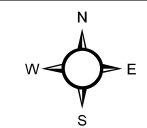
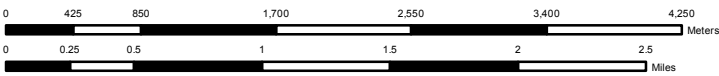


**Legend**

**trails**

- Public Use Trails
- Jeep Trail-Seasonal Use
- Closed Areas
- Seasonal Hunting Areas

Map Projection: NAD\_1983\_StatePlane\_Vermont\_FIPS\_4400  
 Graticule Units: degrees, minutes, seconds  
 Map Grid Unit: Meter  
 Map for planning purposes only



1 = 47,519