

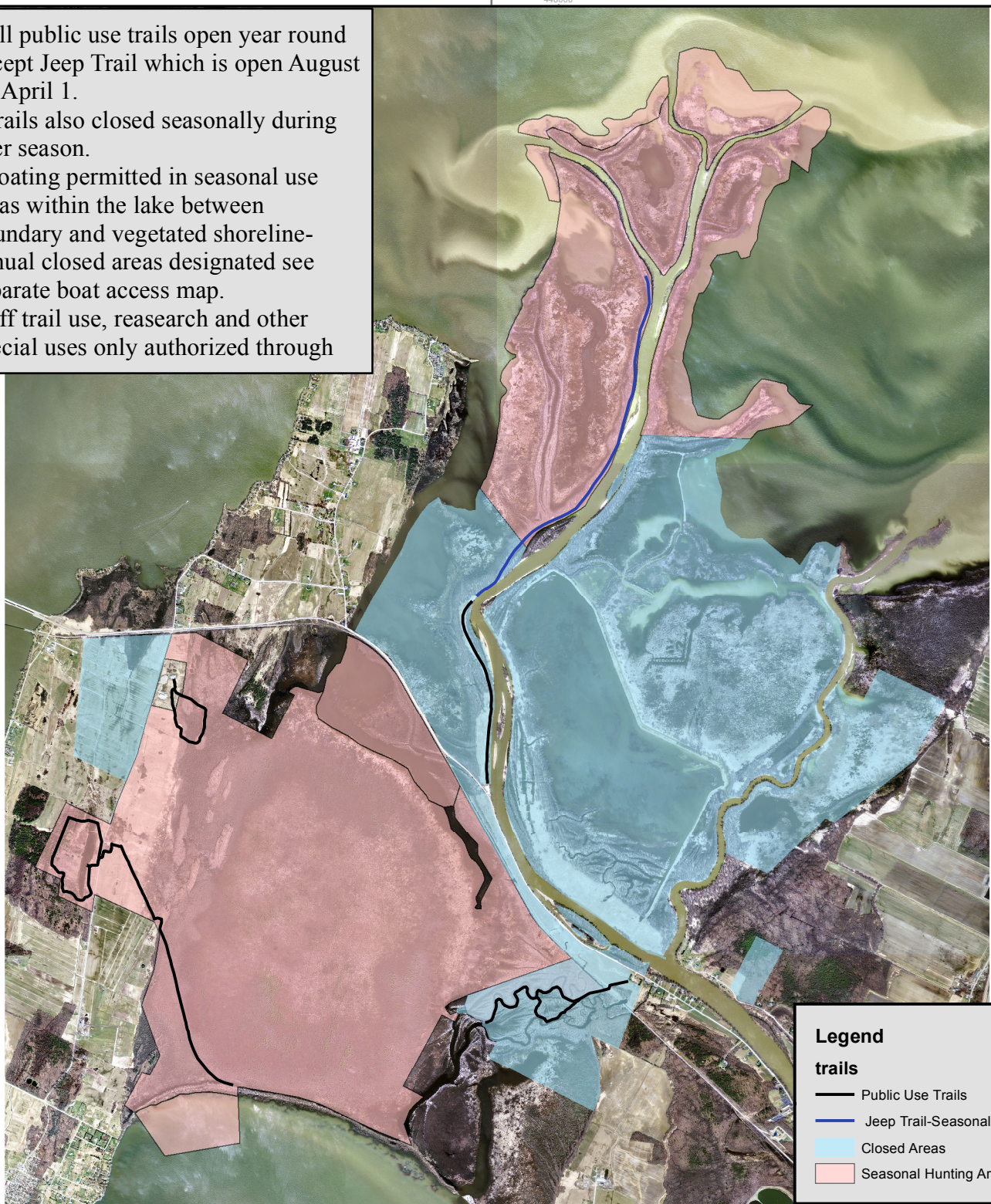


U.S. Fish & Wildlife Service

Type of Map

## Open and Closed Areas - Missisquoi NWR

- \*All public use trails open year round except Jeep Trail which is open August 1 - April 1.
- \*Trails also closed seasonally during deer season.
- \*Boating permitted in seasonal use areas within the lake between boundary and vegetated shoreline-annual closed areas designated see separate boat access map.
- \*Off trail use, research and other special uses only authorized through

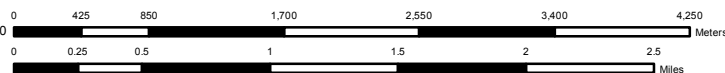


### Legend

#### trails

- Public Use Trails
- Jeep Trail-Seasonal Use
- Closed Areas
- Seasonal Hunting Areas

Map Projection: NAD\_1983\_StatePlane\_Vermont\_FIPS\_4400  
Graticule Units: degrees, minutes, seconds  
Map Grid Unit: Meter  
Map for planning purposes only



1 = 47,519

