



**MB-FWS-Migratory Birds  
NAWCA 2024-2 US Standard Grants  
FY2024**

**Announcement Title: F24AS00008 - NAWCA 2024-2  
US Standard Grants**

**Application Due Date: July 7, 2023, at 11:59 pm Eastern Time**

**Program Authorizing Legislation:** North American Wetlands Conservation Act (16 USC Ch. 64)

SOLICITATIONS: The Catalog of Federal Domestic Assistance (CFDA) program does not use social media or contact individuals by phone to solicit, review, or make awards. Government staff will NOT call or message you requesting money in order to be eligible for an award. Please report any information and documentation that you have related to such incidents to the FBI's Internet Crime Complaint Center (<https://www.ic3.gov>) and your local law enforcement authorities.

## TABLE OF CONTENTS

<b>INTRODUCTION .....</b>	<b>4</b>
<b>HOW TO MAKE YOUR PROPOSAL SUCCESSFUL .....</b>	<b>4</b>
<b>APPLYING FOR A NAWCA US GRANT .....</b>	<b>4</b>
<b>MAJOR CHANGES/UPDATES FROM PREVIOUS US STANDARD GRANT INSTRUCTIONS.....</b>	<b>7</b>
<b>PROJECT OFFICER’S PAGE .....</b>	<b>8</b>
<b>PROPOSAL SUMMARY .....</b>	<b>10</b>
<b>FINANCIAL PLAN TABLE .....</b>	<b>13</b>
<b>WORK PLAN.....</b>	<b>14</b>
<b>WORK PLAN FORMAT .....</b>	<b>17</b>
<b>TRACT TABLE AND FINAL TITLEHOLDER SUMMARY .....</b>	<b>19</b>
<b>TECHNICAL ASSESSMENT QUESTIONS.....</b>	<b>21</b>
<b>TECHNICAL ASSESSMENT QUESTIONS FORMAT .....</b>	<b>22</b>
TECHNICAL ASSESSMENT QUESTION #1 .....	22
TECHNICAL ASSESSMENT QUESTION #2 .....	23
TECHNICAL ASSESSMENT QUESTION #3 .....	24
TECHNICAL ASSESSMENT QUESTION #4 .....	25
TECHNICAL ASSESSMENT QUESTION #5 .....	26
TECHNICAL ASSESSMENT QUESTION #6 .....	28
TECHNICAL ASSESSMENT QUESTION #7 .....	29
<b>SCORING TABLE .....</b>	<b>31</b>
<b>PARTNER CONTRIBUTION STATEMENTS .....</b>	<b>32</b>
PARTNER CONTRIBUTION LETTER TEMPLATE .....	33
<b>OPTIONAL MATCHING CONTRIBUTIONS PLAN (MATCH PLAN OR MCP).....</b>	<b>34</b>
<b>STANDARD FORM-424S AND PROJECT ABSTRACT SUMMARY INSTRUCTIONS.....</b>	<b>34</b>
<b>MAPS.....</b>	<b>36</b>
PROJECT AREA MAP EXAMPLES .....	37
TRACT MAP EXAMPLES .....	40
<b>GIS SHAPEFILE INSTRUCTIONS .....</b>	<b>43</b>
<b>PROPOSAL EASEMENT, LEASES, AND INDIRECT COST RATE AGREEMENT .....</b>	<b>44</b>
<b>PROPOSAL EXAMPLES BY SECTION .....</b>	<b>44</b>
PROPOSAL SUMMARY EXAMPLE.....	45
FINANCIAL PLAN TABLE EXAMPLE .....	47
WORK PLAN EXAMPLE .....	48
TRACT TABLE EXAMPLE .....	51
TAQ #1 EXAMPLE.....	52
TAQ #2 EXAMPLE.....	53
TAQ #3 EXAMPLE.....	54
TAQ #4 EXAMPLE.....	54
TAQ #5 EXAMPLE.....	55

OPTIONAL MATCHING CONTRIBUTION PLAN EXAMPLE .....	56
<b>OTHER ATTACHMENTS.....</b>	<b>56</b>
A. BIRD CONSERVATION REGIONS AND TAQ #2 PRIORITY NAWCA NON-WATERFOWL SPECIES .....	57

## INTRODUCTION

These instructions are applicable to U.S. Standard Grant proposals submitted through July 7, 2023.

### HOW TO MAKE YOUR PROPOSAL SUCCESSFUL

#### **Contact the Division of Bird Habitat Conservation (DBHC) with any questions.**

DBHC staff reviews each proposal, proposal component, and recipient for eligibility. The rules, regulations and policies that govern financial assistance under a North American Wetlands Conservation Act (NAWCA) grant can be difficult to navigate. We highly recommend you contact DBHC with any questions, especially questions regarding eligible activities. A proposal will be automatically ineligible if the margins and font style and size are modified from the Proposal Outline Template, or if the proposal is incomplete. **We highly recommended you submit proposals before the deadline in case there are any technical difficulties or unforeseen circumstances that may cause delays.** To review NAWCA Eligibility Criteria and Processes, visit: <https://www.fws.gov/service/north-american-wetlands-conservation-act-nawca-grants-us-standard>.

#### **Proposal Outline Template and Other Information**

We recommend you prepare the Work Plan, Financial Plan Table, and Tract Table before developing the rest of the proposal. These will provide a reference to ensure that the proposal data is consistent throughout all sections. For Proposal Outline Template and other information visit: <https://www.fws.gov/service/north-american-wetlands-conservation-act-nawca-grants-us-standard>.

#### **Migratory Bird Joint Venture**

We recommend coordinating with your local Migratory Bird Joint Venture. Joint Ventures are located throughout the United States and may be able to assist with partnership opportunities: <https://www.fws.gov/partner/migratory-bird-joint-ventures>

### Applying for a NAWCA US Grant

If your organization is registered in GrantSolutions (<https://www.grantsolutions.gov/>), you must apply for grant opportunity announcements directly via GrantSolutions. If you encounter issues with submitting an application in GrantSolutions, contact GrantSolutions help desk to confirm roles. See ‘Steps to Setting Up an Account within GrantSolutions’ below.

The instructions to apply for an announcement within GrantSolutions are described below: <https://www.grantsolutions.gov/support/public/pdf/QuickSheetDirectedAnnouncement.pdf>

**For all non-Federal entities: If a proposal is not submitted through GrantSolutions, then the proposal will be deemed ineligible.**

The screenshot below includes the forms that must be included with your submission:

Additional Information to be Submitted	Enclosure(s)	Attachment(s)	Status
Other		0 <a href="#">Uploaded Files</a> 0 <a href="#">Mail-in Items</a>	✓
Program Narrative		0 <a href="#">Uploaded Files</a> 0 <a href="#">Mail-in Items</a>	✓
Online Forms	Enclosure(s)	Attachment(s)	Status
Project Abstract Summary (Version 2.0)	<a href="#">View Online</a> <a href="#">Print Completed</a>	0 <a href="#">Uploaded Files</a> 0 <a href="#">Mail-in Items</a>	✓
SF-424 Application for Federal Assistance (Version 3.0)	<a href="#">View Online</a> <a href="#">Print Completed</a>	2 <a href="#">Uploaded Files</a> 0 <a href="#">Mail-in Items</a>	✓
SF-424A Budget Information - Non-Construction	<a href="#">View Online</a> <a href="#">Print Completed</a>	0 <a href="#">Uploaded Files</a> 0 <a href="#">Mail-in Items</a>	✓
SF-424B Assurances - Non-Construction	<a href="#">View Online</a> <a href="#">Print Completed</a>	0 <a href="#">Uploaded Files</a> 0 <a href="#">Mail-in Items</a>	✓
SF-424C Budget Information - Construction Programs	<a href="#">View Online</a> <a href="#">Print Completed</a>	0 <a href="#">Uploaded Files</a> 0 <a href="#">Mail-in Items</a>	✓
SF-424D Assurances - Construction Programs	<a href="#">View Online</a> <a href="#">Print Completed</a>	0 <a href="#">Uploaded Files</a> 0 <a href="#">Mail-in Items</a>	✓
SF-LLL Disclosure of Lobbying Activities (Version 2.0)	<a href="#">View Online</a> <a href="#">Print Completed</a>	0 <a href="#">Uploaded Files</a> 0 <a href="#">Mail-in Items</a>	✓

‘Other’ – location to upload property documents, NICRA, audit reports, and other supporting documents.

‘Program Narrative’ – full proposal that includes partner letters and maps in pdf form.

Project Abstract Summary – must be completed to support award language. See page 40 to complete.

SF-424 – required for all NAWCA applicants.

SF-424A – budget information required on all projects that are non-construction only.

SF-424B – Assurances for non-construction only.

SF-424C – Budget information required for all projects that include construction.

SF-424D – Assurances for construction only.

SF-LLL – Disclosure of lobbying activities

**Note:** GIS shapefiles must be emailed since GrantSolutions does not have the ability to accept shapefiles.

**After your application is submitted, email the application confirmation number (Confirmation number will start with FWS-MB followed by year and six numbers) and shapefiles to [dbhc@fws.gov](mailto:dbhc@fws.gov).**

**Federal Applicants:** email proposal and all supporting documents to [dbhc@fws.gov](mailto:dbhc@fws.gov).

Grantsolutions.gov, Grants.gov and SAM.gov are free websites. Do not pay for your SAM.gov registration or renewal, and do not provide any information to any scammers who may contact you.

### Steps to register for Unique Entity ID (UEI) number (formerly DUNS)

On April 4, 2022, the DUNS number was replaced by the Unique Entity ID (UEI). You must have an active System for Award Management (SAM.gov) registration to apply through GrantSolutions, to receive an award and to be able to receive funds. We strongly encourage applicants to initiate this process at least six weeks before the application deadline. If your organization is registered with SAM.gov but your status is not listed as “active,” you must update your registration prior to submitting an application. You must renew and revalidate the SAM.gov registration at least every 12 months and ensure that all information is current. All active SAM.gov registrants will have their Unique Entity ID (UEI) automatically assigned and viewable within SAM.gov.

### Steps to Setting Up Account within GrantSolutions:

1. To register for a user account, visit <https://home.grantsolutions.gov/home/getting-started-request-a-user-account/>
2. In “Request a user account”, go to GrantSolutions Self Registration and click on Electronic User Request Form.
3. To complete your GrantSolutions account setup, someone in your organization needs to be assigned the

role of “Grantee Administrative Official/Grantee Authorized Representative”.

4. Once your organization is set up in GrantSolutions, your organization will be able to apply for directed grant announcements within GrantSolutions. Below is a link that explains how to apply for a Directed Announcement:

<https://www.grantsolutions.gov/support/public/pdf/QuickSheetDirectedAnnouncement.pdf>

### **Help desk Support**

Please send all GrantSolutions related help desk questions/issues to [help@grantsolutions.gov](mailto:help@grantsolutions.gov). If you do not receive a response or if the response did not resolve the issue, please ask that the ticket be escalated. Very important: enter all requested information under GRANTEE PRINCIPAL INVESTIGATOR (PI/PD) and the GRANTEE'S ADMINISTRATIVE OFFICER” (ADO). Do not forget the username and the correctly spelled email address. For new applications, submit the form without filling in the requested “grant number”.

### **Proposal Deadlines**

The U.S. Standard Program consists of two submission cycles. Complete proposals must be submitted by 11:59 pm Eastern Time, **February 24, 2023, and July 7, 2023. We highly recommend that you submit proposals before the deadline in case there are any technical difficulties or unforeseen circumstances that may cause a delay in submitting the proposal.** Proposals may be submitted at any time before those dates. Proposals received after the February deadline will be considered for funding as a July submission. Proposals received after the July 2023 deadline will be ineligible unless the proposal is clearly labeled as an early 2025 submission (these will be subject to modifications if there are changes in the 2025 submission guidelines).

### **Integrity of Scientific and Scholarly Activities**

In 2011, the Department of Interior (DOI) established a policy to ensure and maintain the integrity of scientific and scholarly activities used to inform management and public policy decisions: DOI Policy, 305 DM 3, "[Integrity of Scientific and Scholarly Activities](#)". The scientific integrity policy applies to the DOI employees, contractors, grant recipients, and volunteers when they analyze or share scientific information with the public or use DOI's information to make policy or regulatory decisions. This policy applies to all funding applications received by the North American Wetlands Conservation Act grant programs. Essentially, the use of false data to leverage grant funds is a direct violation of DOI's scientific integrity policy and requires the refund of any associated federal assistance.

### **Partner Contribution Statements**

We will only accept properly formatted Partner Contribution Statements as verification of partner match. Submitting partner letters that do not follow the format in the guidelines will adversely affect the timely review of a proposal and may result in the contribution being considered as non-match.

## **MAJOR CHANGES/UPDATES FROM PREVIOUS US STANDARD GRANT INSTRUCTIONS**

- The following items are no longer required on the Project Officer's Page:
  - a. Regional Information:
    - i. List of State(s)
    - ii. List of County(ies)
    - iii. Joint Venture Information
    - iv. Bird Conservation Regions (BCRs)
  - b. Applicant Job Title
  - c. Applicant Organization Address
  - d. Applicant Phone Number
  - e. Applicant Email Address
  - f. Additional Contacts
  - g. Unique ID Number
  - h. Applying for Gulf Spill funding question
  - i. Matching Contributions Plan (MCP) question
  - j. Programmatic grant questions
  - k. Number of proposals in proposal area
  - l. For U.S. Fish and Wildlife Service (FWS) and/or Federal funds, comment about additional lines of accounting
  - m. Carbon Sequestration question
- Proposal Summary – total pages are reduced from three to two pages maximum.
- Projects that include a statewide project area with to be determined (TBD) tracts may indicate “statewide” instead of listing all counties within the state.
- Over \$1 million one-page justification is no longer required.
- Total indirect costs can be lumped in the Financial Plan Table. Indirect Cost Rate tables for each tract are no longer required.
- Central tract Location data is eliminated throughout Work Plan.
- Narrative in Technical Assessment Question (TAQ) 1 was removed except for projects that contain tracts that have not yet been identified. TAQ 1 allows for estimated numbers when sufficient data is not available, and the table has been reformatted.
- TAQ 2 was revised to include ‘estimated’ numbers and the table was reformatted.
- Emphasis was added in TAQ 3 to not include narrative information for the National Bird Priority plans in Part A or under Part B.
- TAQ 3 now includes a table under Part B. No separate narrative is required under TAQ 3.
- Funding categories were removed from TAQ 4 and 5 tables.
- Narrative for TAQ 6 was removed. TAQ 6 is in table format that should list species and benefits only.
- Moved Tract Table location to after the Work Plan.
- In addition to the project area map, individual tract maps are now required. Examples have been provided in the maps section of these instructions. The GIS shapefile must also include the project area and individual tract polygons.
- On January 1, 2022, DOI implemented the project abstract summary for all applications in [www.grantsolutions.gov](http://www.grantsolutions.gov). See page 34 & 35 of these instructions for completion guidance.
- SF-424 completion guidance has been updated to complement GrantSolutions application process. See page 34 & 35 for instructions.

## PROJECT OFFICER'S PAGE

To download the full Proposal Outline Template, visit:

<https://www.fws.gov/service/north-american-wetlands-conservation-act-nawca-grants-us-standard>

**Please do not include a cover/transmittal letter at the beginning of the proposal.** The Project Officer's page must be the first page of the proposal. Do not adjust margins on the Project Officer's Page. The information below in italics is intended to assist you as you complete the blank proposal outline.

**What is the proposal title?** *Due to database limitations, it is critical that the title be limited to 80 characters (including spaces); phased proposals must retain the original title with only the phase number changing. Enter a short, descriptive, and unique title, such as "Falcon Bottoms," "Turtle Bog Marsh," or "Great Bay." If the proposal is a phase of an earlier funded proposal, use the same title as the earlier proposal and include the appropriate Roman numeral to denote that this is a subsequent proposal, such as "Falcon Bottoms II."*

**What is the date you are submitting the proposal?**

### **Project Officer Information:**

1. Name: *The Project Officer **MUST** be the primary point of contact for the project and must be affiliated with/employed by the grantee's organization. List the person who will be managing the project activities, filing reports, and communicating with DBHC. Please note, this will be the only person DBHC communicates with regarding the project.*
2. Organization: *If the organization entered here is not the grantee organization, please explain. (See most current Eligibility Criteria and Processes)*

**Will any of the NAWCA funds requested as part of this proposal be received or spent by the U.S. Fish and Wildlife Service or another Federal agency? Yes/No**

If yes, which agency(ies) will receive these funds and what is the fund amount:

Agency \_\_\_\_\_ Amount \_\_\_\_\_

**Does this proposal include acquisition activities that will add to the National Wildlife Refuge System (NWRS)? Yes/No**

If yes, please indicate which NWRS program will accept the acquisition(s): National Wildlife Refuge (NWR) and which one(s), Waterfowl Production Area (WPA) and which one(s), or Small Wetland Acquisition Program (SWAP).

**Will any portion of any tract or activities associated with any tract be used to satisfy wetland or habitat mitigation requirements under Clean Water Act, Rivers and Harbors Act, Fish and Wildlife Coordination Act, Water Resources Development Act, ecological service credits or other related statutes now or in the future? Yes/No**

If yes, please highlight and provide details in the appropriate financial plan narrative/work plan section.

**Have you confirmed that all partners, key personnel, and contractors are eligible to participate in Federal grants? Yes/No**

*Project Officer must confirm that parties are eligible to participate in federal grants by checking the Federal Excluded Parties List at: <https://sam.gov/content/exclusions>. If an ineligible party participates in a federally funded project, all or a portion of the federal funding may be terminated.*

**Briefly describe qualifications and experience of key personnel (1-2 sentences per individual) who will be providing project implementation assistance (e.g., financial officer, project officer, key field**



staff, etc.):

**To ensure that the proposal complies with available guidelines and that partners are aware of their responsibilities, the Project Officer certifies to the following statement:** I have read the 2024-2 U.S. Standard Grant proposal instructions, eligibility information, and applicable U.S. grant administration policies and informed partners or partners have read the material themselves. To the best of my knowledge, this proposal is eligible and complies with all NAWCA, North American Wetlands Conservation Council (Council), and Federal grant guidelines and the information submitted herein is true and correct. The work in this proposal consists of allowable and eligible work and costs associated with long-term wetlands and migratory bird habitat conservation. *If habitat or migratory bird benefits described in the proposal are found to be grossly exaggerated and/or intentionally misleading, the proposal may be declared ineligible and any resulting awards may be fully or partially terminated.*

---

Sign & date

**Audit reports.** If the applicant organization expended more than \$750,000 of federal funds during the last calendar year, please include a copy of your most recent of Single Audit Data Collection Form (SF-FAC) that was submitted to the Federal Audit Clearinghouse. If your organization did not expend more than \$750,000 of federal funds last year, please certify that the Single Audit (formerly A-133) was not required.

**Required Overlap/Duplication Statement:** Applicants must provide a statement that addresses whether there is any overlap between the proposed project and any other active or anticipated projects in terms of activities, costs, or time commitment of key personnel. If any overlap exists, applicants must provide a description of the overlap in their application. Applicants must also state if the proposal submitted for consideration under the program is/is not in any way duplicative of any proposal that was/will be submitted for funding consideration to any other potential funding source (Federal or non-Federal). If such a circumstance exists, applicants must detail when the other duplicative proposal(s) were submitted, to whom (entity name and program), and when funding decisions are expected to be announced. If at any time a proposal is awarded funds that would be duplicative of the funding requested from the Service, applicants must notify the Service point of contact for this funding opportunity immediately. *This requirement can be a few short sentences explaining whether there is any overlap between or among proposed projects. For instance, you need to include an overlap statement if you submitted a tract(s) for funding consideration in a NAWCA Small Grants proposal and also submitted that same tract(s) for consideration under a U.S. Standard Grants proposal (or vice versa).*

**Do you have any comments about, or suggestions for, the NAWCA program?**

You may provide comments with this proposal or send them at any time.

- By mail to: Coordinator, North American Wetlands Conservation Council  
U.S. Fish and Wildlife Service  
Division of Bird Habitat Conservation  
Mail Stop: MB  
5275 Leesburg Pike  
Falls Church, VA 22041-3803
- Via phone to: 703-358-1748
- Via e-mail(preferred) to: [dbhc@fws.gov](mailto:dbhc@fws.gov)

## PROPOSAL SUMMARY

(2 pages maximum)

The Proposal Summary is the only narrative material provided to the North American Wetlands Conservation Council and Migratory Bird Conservation Commission, so it must be descriptive and succinct. Do not include a detailed description of the work to be done for individual tract(s), as this should be included within the Work Plan section of the Proposal. Consider developing the Summary after you have written the rest of the proposal to help ensure that information in the Summary is consistent with the proposal. The Proposal Summary must follow the format provided in the blank proposal outline exactly, including margins, spacing, font size, etc. Click here for the [Proposal Summary Example](#).

### General Requirements

1. The Proposal Summary will be used as a stand-alone document and will be subject to editing by the FWS. Start the Proposal Summary on a new page.
2. Do not number Proposal Summary pages. Start with the Financial Plan Table as page 1, and sequentially number all remaining pages.
3. The Proposal Summary, which includes tabular and narrative information, may be a maximum of two pages.
4. All margins must be 1 inch. Failure to adhere to margin requirements will affect eligibility of your proposal.
5. Format must be a PDF version.
6. Font size: 11 point and Font type: Times New Roman. Failure to adhere to font size requirements will affect the eligibility of your proposal.
7. The information in the summary table must exactly match the information provided elsewhere in the proposal.

### Specific Requirements (see [Proposal Summary Example](#)).

1. Center “NORTH AMERICAN WETLANDS CONSERVATION ACT PROPOSAL SUMMARY” in all capital letters at the top of the page and center the project title and state with initial capital letters beneath it. If the proposal is a phase of an earlier funded proposal, use the title of the earlier proposal with an appropriate Roman numeral denoting the phase number.
2. All other information is left justified, without indentation, except for financial totals on the right side of the page, which are right justified.
3. Type the header for each paragraph category in all capital letters (e.g., COUNTY(IES), STATE(S), CONGRESSIONAL DISTRICT(S); JOINT VENTURE(S); BIRD CONSERVATION REGION(S); GRANT AMOUNT; MATCHING PARTNERS; etc.).
  - **Note:** If the project area includes the entirety of a state and there are to be determined (TBD) tracts in the proposal, please list the state and indicate “statewide” instead of listing all counties within that state. If the project area includes the entirety of a state but all tract locations are known, then provide the list of counties that the tracts are located in.
  - Joint Venture(s): Identify the Migratory Bird Joint Venture area(s) by visiting the [USFWS JV Directory website](#) or download the [JV GIS shapefile](#).
  - BCR(s): Identify the Bird Conservation Region BCR(s). Visit <https://nabci-us.org/resources/bird-conservation-regions-map/> or download the [BCR GIS shapefile](#).
4. Using the prescribed format shown in the example, provide the requested information for each category. **However, do not include categories shown in the example if no information for that category exists.** For instance, if there is no proposed restoration work, do not include a “Restored” line in the “ACTIVITIES, COSTS AND ACRES” section.
5. Enter the total grant amount on the right side of the page, right justified, on the same line as the header “GRANT AMOUNT.” Under “Grant Amount”, type “Allocation.” Enter the allocation

amount after the Grantee organization name. Enter the total for MATCHING PARTNERS, and the total for ACTIVITIES, COSTS AND ACRES each on the same line as their respective headers, in alignment with the total grant amount.

6. **MATCHING PARTNERS:** Enter the grantee organization and contribution (if applicable) immediately underneath the category header. List the matching partners and their contributions under the grantee. Provide the full partner name; do not abbreviate. List the individual match contributions in tabular format (see example). **For the grantee or partner associated with a Matching Contributions Plan (MCP), list the amount associated with the MCP phase as the contribution amount on a separate line.**
7. **GRANT AND MATCH - ACTIVITIES, COSTS AND ACRES:** Insert the total costs and acreage associated with the grant and match funds to the right on the same line as the header (right justified). Under the header, list one or more appropriate activities, costs, and acreages from the following activity categories: Fee Acquired; Fee Donated; Easement(s) Acquired; Easement(s) Donated; Lease(s) Acquired; Lease(s) Donated; Restored; Enhanced; Wetland Established; Other; Previously Approved MCP Funds; Indirect Costs. **List the activities in that order, but do not list categories in which no activity will take place.** After each category listed, indicate the amount being expended in tabular format, and then type a slash (/) and the total acreage involved. If building envelope acres are involved with any activities, ensure that these acres are not included in the acreage totals for the proposal.
  - Include only those activities, costs, and acres associated with grant or match funds. See the instructions for the Financial Plan Table below for contributions from non-match funds.
  - If acquired acreage also will be restored or enhanced in the current proposal, place parentheses around the restored or enhanced acreage to show that they have already been accounted for under the acquired category. These are referred to as non-additive or non-add acres. Non-add acres should also be indicated if project activities are occurring on a property that has been part of a previous NAWCA project.

In the following simplified example, 300 new acres are to be acquired in Fee Title using grant and/or match funds.

- 200 new acres are to be restored using grant and/or match funds; 150 of the 300 acres acquired in fee in this project are also restored – (150); an additional 200 acres acquired in a previous NAWCA project will also be restored – (200).
- 100 new acres are to be enhanced using grant and/or match funds; 100 of the 300 acres acquired in fee are also enhanced – (100); an additional 300 acres acquired in a previous phase will also be enhanced – (300).

GRANT AND MATCH - ACTIVITIES, COSTS AND ACRES	\$2,050,000/600 (750) acres
Fee Acquired	\$1,000,000/300 acres
Restored	\$500,000/200 (350) acres
Enhanced	\$500,000/100 (400) acres
Other	\$50,000

8. **NON-MATCHING PARTNERS:** List all non-matching partners and contributions in the same format as for matching partners. **List contributions only; do not include acres or activities.**
9. **MATCHING CONTRIBUTIONS PLAN:** If a partner's match amount is associated with a MCP (either a new MCP submitted with the proposal or a follow-on phase for a MCP previously approved by the Council), list only the match amount that is being applied to the current proposal. MCPs can only be submitted for excess old match associated with the acquisition of a single tract.

All of the acres associated with a new MCP are listed with the appropriate activity. Acreage

associated with a previously approved/used MCP does not appear in subsequent proposals; list the MCP amount attributed to the current proposal as “Previously Approved MCP Funds”.

In the following simplified examples, costs and acres are listed along with the correct format for a new MCP (example 1) and the second phase of a previously approved MCP (example 2):

Example 1.

- 400 new acres are to be acquired in Fee Title using grant and/or match funds (total cost = \$2,000,000).
- 100 additional match acquisition acres are the basis for a new MCP (total appraised value = \$3,000,000).

GRANT AND MATCH - ACTIVITIES, COSTS AND ACRES	\$3,000,000/500 acres
Fee Acquired	\$3,000,000/500 acres [this includes all of the MCP acres and \$1,000,000 of the value of the MCP]

Example 2.

- In this example, the MCP is the second phase of the previously approved MCP (\$2,000,000 remains after the initial phase). No acres are listed because these have been accounted for in the initial phase. Only the \$2,000,000 cost associated with this phase of the MCP is listed.
- 300 new acres are to be acquired in Fee Title using grant and/or match funds (\$1,000,000).

GRANT AND MATCH - ACTIVITIES, COSTS AND ACRES	\$3,000,000/300 acres
Fee Acquired	\$1,000,000/300 acres
Previously Approved MCP Funds	\$2,000,000

This phase would close out the MCP.

10. PROPOSAL PURPOSE AND DESCRIPTION: Summarize the proposed goals and objectives. Ideas to include but are not limited to:
  - What activities are being proposed?
  - Where will the activity (ies) be located (e.g., on a Refuge, private land, near a conservation area)?
  - Is a Joint Venture involved and/or benefiting?
11. HABITAT TYPES AND WILDLIFE BENEFITTING: Summarize the habitat types to benefit by the proposed activities; provide examples of the species (e.g., Blue-winged Teal, American Bittern, etc.) benefiting and their uses of the habitats (e.g., breeding, feeding, resting, etc.).
12. PUBLIC BENEFITS/PUBLIC ACCESS: Summarize the benefits of the proposal to the public (e.g., hiking, hunting, birding, education, water quality, etc.); describe whether any of the grant/match tracts will allow public access, and if so, what type of access.
13. NEW PARTNERS: Identify partners who have never previously participated in any NAWCA grant.
14. RELATIONSHIP TO PREVIOUSLY FUNDED NAWCA PROPOSALS: If applicable, summarize the relationship of the current proposal with previously funded NAWCA proposals in the region and show how the current proposal adds to progress (if any) towards regional conservation goals for habitats and/or birds. If this is a phased NAWCA proposal and/or if your organization has received other NAWCA Standard grants in the same general area, specifically identify the cumulative habitat achievements of previous phases and how the landscape and the bird populations of that landscape have changed.
15. THREATS AND SPECIAL CIRCUMSTANCES: Summarize any threats to habitats in the proposal area or other circumstances that make funding during this proposal cycle particularly important.

## FINANCIAL PLAN TABLE

**NOTE: Landowner and tract names must be consistent throughout the proposal**

**Insert the Financial Plan Table as page 1, after the Summary Pages.**

1. Complete the Financial Plan Table provided in the Word proposal outline or Excel template and insert it as page 1. Click here for the [Financial Plan Table Example](#). The Word Proposal Outline contains a blank Financial Plan Table or you may use the table in the Excel Tables Template workbook found here: <https://www.fws.gov/service/north-american-wetlands-conservation-act-nawca-grants-us-standard>.
2. Identify each tract (or logical groupings of tracts) using a consistent method on all maps and throughout the proposal. Show all costs covered by the grant, each matching partner, and each non-matching partner for all grant/match tracts. Non-match should not be listed in the table unless it has been pooled with grant/match dollars to accomplish grant/match acres. Entirely non-match tracts and activities should not be included in the table.
3. For all grant expenditures, list the partner that will be spending grant funds on the same line item.
4. You may show grant and one partner's contribution on one line for the same tract if that partner will be receiving grant funds, but do not combine different partner contributions on the same line. For example, if there are 10 separate partners contributing to fee acquisition for a particular tract, then there should be 10 separate partner entries for that tract. Add lines to the table as needed. In the [Financial Plan Table Example](#), multiple lines were added under Land Costs: Fee Acquired to demonstrate separate lines for each partner. In the example, lines were added under "Land Costs: Fee Acquired" because different tracts are affected and they should not be lumped.
5. Separate match funds into "Old" (spent prior to proposal submission) and "New" (to occur after proposal is submitted and during the Grant Agreement period).
6. Include indirect costs as one line-item total and in the tract ID column include tract(s) claiming indirect costs.
7. If you are submitting a new MCP, be sure the Financial Plan Table only includes funds for the current proposal and not the entire contribution in the MCP. Costs from the first phase of an MCP should appear with the activity and partner in the appropriate direct cost category. For subsequent phases of an MCP, enter the MCP match costs in line L. PREVIOUSLY APPROVED MCP, which is above line M. GRAND TOTAL DIRECT costs, and list the appropriate amount as old match.

**Previously Approved MCP example (showing final portion of Financial Plan Table only):**

ACTIVITIES	GRANT \$	ABBREVIATED PARTNER NAME	OLD MATCH \$	NEW MATCH \$	TOTAL GRANT + MATCH \$	TRACT ID	NON-MATCH \$
<b>L. PREVIOUSLY APPROVED MCP</b>		PARTNER A	<b>\$3,000,000</b>		<b>\$3,000,000</b>		
<b>M. GRAND TOTAL DIRECT (Sum of G and H, I, J, K, L)</b>	<b>\$1,000,000</b>		<b>\$4,000,000</b>	<b>\$3,500,000</b>	<b>\$8,500,000</b>		<b>\$500,000</b>
Indirect Costs		PARTNER B		\$5,000	\$5,000	4	
<b>N. TOTAL INDIRECT</b>				<b>\$5,000</b>	<b>\$5,000</b>		
<b>GRAND TOTAL (Sum of M and N)</b>	<b>\$1,000,000</b>		<b>\$4,000,000</b>	<b>\$3,505,000</b>	<b>\$8,505,000</b>		<b>\$500,000</b>

8. Show each private landowner by name, contribution amount, and tract if they are contributing to grant/match acres.
9. For acres being acquired, restored, enhanced, or established by pooling both grant/match funds and non-match funds, and in which NAWCA will acquire an undivided interest in those acres, list the total costs in either grant or match in the table, as appropriate. Do not pro-rate acres between grant or match (See item 2 for clarification on when to include non-match).

10. All cost categories are shown in the Word and Excel template. Do not include categories that do not apply to your proposal (e.g., if there is no enhancement in your proposal, then delete those activity rows).
11. You may use a landscape orientation, versus portrait, for the printed page if needed.
12. You may abbreviate partner names in the table but be sure to spell them out in the Partner Information section in the bottom portion of the Financial Plan Table.
13. Below the Financial Plan Table in the Partner Information section, list each sub-grantee who will receive, because of this proposal, any of the following:
  - Federal grant funds or “new” matching funds,
  - Property (e.g., land structures, dikes, levees, earthen dams, equipment, supplies) that will be purchased with Federal grant or matching funds or
  - Property committed as “new” match.
  - Contractors or vendors who will be paid for goods, construction, planting or services purchased for the proposal and individuals are NOT considered sub-grantees.

### **Matching Contribution Plans (Optional)**

If any match was previously approved by the Council via an optional MCP, include a copy of the DBHC email approving the MCP and provide the following information: tract affected, how much of each partner’s match has been used in previous proposals, how much is being used in this proposal, and how much will remain after the current proposal is funded (Click here to see an [example of an MCP table](#)).

## **WORK PLAN**

The Work Plan is constructed as series of discrete, stand-alone activities (e.g., fee acquisition, easement donation, restoration, enhancement, etc.) associated with specific tracts. See the [Work Plan Example](#). The Work Plan should include only grant/match tracts. Eligible non-match dollars pooled with grant/match dollars to accomplish grant/match acres may be listed in the work plan, but acres and dollars that are entirely funded by or attributed to non-match should NOT be included in the Work Plan.

For the first phase of an MCP, list associated activities/costs with the appropriate tract. MCP costs in subsequent proposals should be shown under “Other Direct Grant/Match Activities”, with the name and phase of the MCP listed under “Item & Work”.

### **Work Plan Formatting**

1. Use the following format for identifying tracts. Each tract should be numbered sequentially starting with “1” and given an identifying name (e.g., Tract 1 - Howard Farms, Tract 2 - Brancheau Wetland, Tract 3 - McIntyre). Describe the work to be done using the format in the example. The tract name should exactly match that used in other sections throughout the proposal. Include the following information:
  - a. Tract name, overall number of acres affected on the tract (for instance, if there are 300 acres acquired and 100 of those acres will be restored, the overall acreage affected is 300(100); the restoration acres would be listed as (100)), and a list of state or Federal government agencies (if any) with a legal interest in the property (such as those with Notices of Funding or Grant Restrictions on fee deeds or easements).
  - b. For each tract, list the acreages for each of the activities associated with the tract. Identify non-add acres (acres already accounted for in a previous activity or NAWCA project: 100 acres acquired and restored – the 100 restored acres are non-add) in parentheses.
  - c. Under each tract listed, type the applicable Work Plan activity category titles in all capital letters and list the total cost and acreage for that activity category within that tract. Identify non-add

- acres for a tract in parentheses. For example, “ACQUISITION FINANCIAL PLAN JUSTIFICATION - \$3,000,000 AND 10,000 acres”. On the next line, separately enter the amount of grant, match, and non-match funding for that activity category within that tract. All costs (“Total \$” column in each table below) must be described and equal the figures in the activity category headers. Identify an actual or estimated timeframe for completion of that activity.
- d. Describe all grant and match activities that will occur on each tract. If multiple activities take place on the same tract, describe them separately but identify if acres overlap between activities. For example, if a proposal includes land acquisition with restoration work done on the same site, this would be described as two separate activities.
2. For each activity, include a clear description of the work to be done and briefly justify why that activity is being included as part of this proposal.
    - a. **Acquisition activities:** Include summary of the acquisition(s) and the need to protect this tract, including whether this tract is vulnerable to development or other threats. If there are building envelopes on the tract, explain how those building envelopes will be removed. If fee acquisition is also protected by a conservation easement, explain why the tract should be or the need to be, protected by both methods.
    - b. **Habitat restoration, enhancement, and establishment activities:** Identify specific habitat types and plant communities affected by proposed activities. Summarize what work will be completed including the key activities. Habitat types should be identified in Joint Venture implementation plans or similar documents. Refrain from including benefits for birds, history of area, and number of total bird species since all this information is captured in other areas of the proposal. If a tract includes invasive species treatments or implementation of any type of fencing material, include answers to these questions:
      - What invasive species are present and how will the invasive species be treated (e.g., mechanical or chemical application)? If mechanical, explain what will be done? If chemical application, what kind of chemical will be used and how many applications will be done? If other control methods will be used, please describe.
      - What is the expected duration of the treatment(s)?
      - Who is responsible for maintaining the invasive species control after the treatment and for how long?
      - If working with private landowner(s), is there an agreement involved?
      - How will the invasive species treatments affect the acres over time?
      - Is the fencing wildlife friendly? If so, how will it improve nearby habitat conditions and not impede wildlife movement? For more information on wildlife friendly fencing, please refer to: <https://fwp.mt.gov/binaries/content/assets/fwp/conservation/land-owner-wildlife-resources/mt-fence-guide-second-edition.pdf>
      - Who is responsible for maintaining the fencing over time?
  3. Explain any unusually high costs or large differences between per acre value of match and grant tracts. Refer to the [Eligibility Criteria & Processes](#) document for information on eligible and ineligible direct and indirect costs. Please explain if cost estimates differ from the fair market/reasonable value.
  4. Itemize costs shown in the Financial Plan Table for each activity and identify the source (grant or the partner providing the match and non-match dollars). Use only the portions of the table that are applicable to each activity.
  5. For each easement or fee acquisition activity included in the proposal, including old match, whether purchased or donated, complete the NAWCA Land Acquisition Disclosure section as part of the Work Plan. If the acquisition activity for that tract does not involve an easement or lease, do not include those portions of the Disclosure in the Work Plan. Attach copies of all easements being used as old match to the proposal. If available, provide draft language of easements to be acquired with



grant or match funds during the project period. Grant funds will not be released for easement acquisition until the easement language has been reviewed and approved by DBHC.

6. Do not include any activity categories in the Financial Plan Justification that are not applicable to a tract. For example, if no portion of a tract is being acquired as part of the project, the Work Plan for that tract would not include an acquisition section. This also applies for non-match. If the non-match contribution is not pooled with grant/match funds, then do not include it in the proposal.
7. If some tracts are not yet identified, explain why and the method to be used to select tracts during proposal implementation.
8. You may group large numbers of tracts with similar activities and per unit costs for the purposes of financial plan justification. Line-item costs must be applicable to most tracts for those tracts to be grouped in the justification (For instance, 50 grassland easements are held by a single partner and planned enhancement on 40 of those easements will cost approximately the same per acre on all of those easements). Do not group acquisitions that will be held by different partners.
9. There is no requirement to acquire a real property interest on a restoration, enhancement, or wetland creation project. However, recipients and subrecipients should have an agreement with the landowner(s) that is consistent with the project design or designed lifespan of the constructed activity (e.g., restoration). A properly built project should seek to maximize the projects' lifespan, while promoting efficient management and maintenance.
10. Applicants must provide a statement specifying the management period for the designed lifespan or useful life of all construction (e.g., new water channel, levee, weir, pumps, other types of water control structure, etc.), as indicated in Technical Assessment Question 5. If the applicant proposes a management period or useful life of 25 years or less, with a value greater than \$100,000, applicants must reference the method used to determine the useful life.
11. Applicants must identify and fully explain proposal components that were funded by a previous NAWCA grant (e.g., tracts and work accomplished). Also provide the name of the previous NAWCA project(s).
12. All dollar figures should add up to those in the Financial Plan Table.
13. Note that all questions are in the future tense, but they also apply to past (match) work and costs.
14. Include any grant/match cost items that cannot be captured under a specific tract in a section entitled "OTHER DIRECT GRANT/MATCH ACTIVITIES" at the end of the Work Plan. Describe in detail what these activities are and itemize costs by activity below that heading. Please note, "grant administration" is not an itemized cost and must not be used to recover any costs that qualify as indirect costs or costs that are allocable to one or more tracts. Please include a description of the use of a continuing MCP, if applicable.
15. Sample answers are provided so applicants can see how information may be presented. Please follow this format. Use tables, bulleted lists, or short statements instead of full sentences and paragraphs to provide the information. If used, tables must provide all requested information. Include information and descriptions that only pertain to the proposed project area(s). Additional information, such as a very detailed land-use history of the area/landscape, may not benefit the proposal.



## WORK PLAN FORMAT

**TRACT #- Name**

**OVERALL ACRES AFFECTED:**

**STATE/FEDERAL AGENCIES HOLDING INTERESTS: (List agencies and describe interest; if none type NA)**

**Acreage Summary of Grant/Match Activities on the Tract:**

**Acquisition**

**Restoration**

**Enhancement**

**Establishment**

**Describe all grant/match activities occurring on the tract here:**

**Tract #-Name: Acquisition Financial Plan Justification - \$\_\_\_\_\_ and \_\_\_\_\_ acres**  
**Grant - \$\_\_\_\_\_ Match - \$\_\_\_\_\_ Non-Match - \$\_\_\_\_\_ Completion:**

### LAND ACQUISITION DISCLOSURE

Type of acquisition: (fee title, easement, lease, etc.)

Holder of NAWCA conservation interest: (fee title, easement, lease, etc.)

Grantor/Seller of conservation interest: (if Grantor/Seller is conservation organization, explain below how sale/transfer increases conservation value)

Tenure of conservation interest: (10 years, perpetuity)

All funding sources for acquisition: (include landowner if acquisition involved a donation or bargain sale)

Are mineral rights severed or included? If severed, explain.

Are water rights severed or included? If severed, explain.

### *EASEMENTS:*

What organization will monitor the easement?

Should the easement holder cease to exist, to what organization will the easement revert?

Has the easement holder adopted the "Land Trust Standards and Practices" developed by the Land Trust Alliance? If so, provide the date of that action. If not, describe the standards used to ensure adequate easement management and monitoring.

Is there a stewardship endowment dedicated to maintaining and managing the easement? If so, what is the amount?

Is subdivision of the easement property permitted? If so, with what limits?

List all other allowed activities, allowed structures, or reserved rights not described above.

### *LEASES:*

What is the nature of the lease?

What activities are allowed/prohibited?

How does this contribute to long-term conservation of the property?

Item & Work	Units	\$/unit	Total \$	Schedule (month, year)	Funding Source (Grant or Partner name)
<b>LAND COSTS</b>					
Subtotal Land Costs					\$
<b>APPRAISALS and OTHER ACQUISITION COSTS</b>					
Subtotal Appraisals and Other Acquisition Costs					\$

NON-CONTRACT PERSONNEL and TRAVEL					
Subtotal Non-Contract Personnel and Travel			\$		
<b>TOTAL ACQUISITION DIRECT COSTS</b>			<b>\$</b>		

Tract #-Name: Restoration Financial Plan Justification - \$\_\_\_\_\_ and \_\_\_\_\_ acres  
Grant - \$\_\_\_\_\_ Match - \$\_\_\_\_\_ Non-Match - \$\_\_\_\_\_ Completion:

Item & Work	Units	\$/unit	Total \$	Schedule (month, year)	Funding Source (Grant or Partner name)
CONTRACTS					
Subtotal Contracts			\$		
MATERIALS and EQUIPMENT					
Subtotal Materials and Equipment			\$		
NON-CONTRACT PERSONNEL and TRAVEL					
Subtotal Non-Contract Personnel			\$		
TOTAL RESTORATION DIRECT COSTS			\$		

Tract #-Name: Enhancement Financial Plan Justification - \$\_\_\_\_\_ and \_\_\_\_\_ acres  
Grant - \$\_\_\_\_\_ Match - \$\_\_\_\_\_ Non-Match - \$\_\_\_\_\_ Completion:

Item & Work	Units	\$/unit	Total \$	Schedule (month, year)	Funding Source (Grant or Partner name)
CONTRACTS					
Subtotal Contracts			\$		
MATERIALS and EQUIPMENT					
Subtotal Materials and Equipment			\$		
NON-CONTRACT PERSONNEL and TRAVEL					
Subtotal Non-Contract Personnel			\$		
TOTAL ENHANCEMENT DIRECT COSTS			\$		

Tract #-Name: Establishment Financial Plan Justification - \$\_\_\_\_\_ and \_\_\_\_\_ acres  
Grant - \$\_\_\_\_\_ Match - \$\_\_\_\_\_ Non-Match - \$\_\_\_\_\_ Completion:

Item & Work	Units	\$/unit	Total \$	Schedule	Funding Source
-------------	-------	---------	----------	----------	----------------

				(month, year)	(Grant or Partner name)
<b>CONTRACTS</b>					
Subtotal Contracts					\$
<b>MATERIALS and EQUIPMENT</b>					
Subtotal Materials and Equipment					\$
<b>NON-CONTRACT PERSONNEL and TRAVEL</b>					
Subtotal Non-Contract Personnel					\$
<b>TOTAL ESTABLISHMENT DIRECT COSTS</b>					\$

#### OTHER DIRECT GRANT/MATCH ACTIVITIES FINANCIAL TABLE

JUSTIFICATION – \$ \_\_\_\_\_

Grant - \$ \_\_\_\_\_ Match - \$ \_\_\_\_\_ Non-Match - \$ \_\_\_\_\_

Describe in detail other activities associated with implementing the grant that cannot be assigned to one or more tracts. Include continuing Matching Contribution Plan information (if applicable). Costs under this section may be disallowed if such costs appear to be unnecessary, unreasonable, duplicative, or allocable to a particular tract.

Item & Work	Units	\$/unit	Total \$	Schedule (month, year)	Funding Source (Grant or Partner name)
<b>TOTAL OTHER ACTIVITIES DIRECT COSTS</b>					\$

#### TRACT TABLE AND FINAL TITLEHOLDER SUMMARY

Ensure that each tract involved in the proposal is consistently identified in each section of the proposal (Summary, narratives, tables, Technical Assessment Questions, etc.). For any tract(s) that is/are not yet identified, complete the Tract Table as thoroughly as possible, explain why the tract(s) is/are not yet identified and describe the methods to be used to select the tract(s).

Please provide the following information for each tract:

- Tract identification (same as on the Financial Plan Table, Work Plan, Technical Assessment Questions 4 & 5, and on the maps submitted with the proposal). If a tract has multiple activities (e.g., Fee Acquired and Restored), then create a separate line for each activity.
- Activity Type: Fee Acquired, Fee Donated, Easement Acquired, Easement Donated, Lease Acquired, Lease Donated, Restored, Enhanced, Wetlands Established.
- Wetland and upland acres within each tract. Be sure to also include any non-add acres in parentheses, if applicable.

- Public Access: Include the total amount of acres that will be open to public access.
- Funding category: List Grant, old match, new match, and/or non-match. Non-match should be pooled with Grant and/or match funds.
- Funding source: List NAWCA and/or abbreviated partner names.
- The county and state where the tract is located.
- A central tract location latitude/longitude point in decimal degrees (i.e., 38.752906, -77.1084432).
- Title holder (name) after the proposal is completed. For easements, give both the fee and easement holders.
- Matching Contributions Plan information: Make sure tracts and acres that are part of a new Matching Contributions Plan are shown here as in the Proposal Summary; i.e., funding is apportioned according to the Matching Contributions Plan, but all acres are counted in the first proposal.
- Total acres.

**The tract location latitude/longitude information is mandatory.**

**Landowner and tract names must be consistent throughout the proposal.**

Below the table, complete the Final Titleholder Summary. Acreage total should match the Summary Page data.

**NOTE:** If your proposal is funded, you will be asked for actual accomplishments of your proposal in this format as part of your final report. This data will be used in Government Performance and Results Act reporting.

**Tract Table Format**

Tract ID	Activity Type	Wetland Acres	Upland Acres	Public Access	Funding Category	Funding Source	County and State	Central Tract Location in Decimal Degrees	Final Title Holder
Tract				# Open Acres					
Tract				# Open Acres					
Tract				# Open Acres					
<b>Total Acres</b>		<b>Total # Wetland Acres</b>	<b>Total # Upland Acres</b>	<b>Total # Open Acres</b>					

**Funding Categories:** (G = Grant, OM = Old Match, NM = New Match, NO = Non-Match)

**FINAL TITLEHOLDER SUMMARY:**

## TECHNICAL ASSESSMENT QUESTIONS

The [North American Wetlands Conservation Act](#) specifies criteria to be used to evaluate proposals. The criteria are captured in the following seven Technical Assessment Questions.

**Question 1** - [How does the proposal contribute to the conservation of waterfowl habitat?](#)

**Question 2** - [How does the proposal contribute to the conservation of other wetland-associated migratory birds?](#)

**Question 3** - [How does the proposal location relate to the geographic priority wetlands described by the North American Waterfowl Management Plan, Partners in Flight, the U.S. Shorebird Conservation Plan, and/or the North American Waterbird Conservation Plan?](#)

**Question 4** - [How does the proposal relate to the national status and trends of wetlands types?](#)

**Question 5** - [How does the proposal contribute to long-term conservation of wetlands and associated habitats?](#)

**Question 6** - [How does the proposal contribute to the conservation of habitat for wetland associated federally listed or proposed endangered species; wetland-dependent Species of Greatest Conservation Need \(SGCN\) from the appropriate State Wildlife Action Plan \(SWAP\); and other wetland-associated fish and wildlife that are specifically involved with the proposal?](#)

**Question 7** - [How does the proposal satisfy the partnership purpose of the North American Wetlands Conservation Act?](#)

Technical Assessment Questions format follows. The questions should include:

1. All seven questions must be answered in no more than 14 pages total, including all text and tables (average of two pages per question). Margins must be 1 inch with Times New Roman size 11 font throughout (not including tables). To stay within the page limit, avoid adding links to lengthy documents, such as publications. These additional links will be considered in the 14-page limit length.
2. Answer each question separately. The questions, including species lists, are available in the [Word Proposal Outline](#).
3. Answers should cover benefits derived from completed grant - and match - funded work in the proposal that occurred within the past two years and will occur during the Assistance Award period.
4. Do not include information/benefits/acres associated with non-match work or tracts except in Questions 7C and 7D.
5. Be as qualitative and as quantitative as possible.
6. Select the best methods to provide as much information as possible (such as giving species, abundance and seasonal use information in a table followed by a narrative, where applicable), while adhering to format and proposal length guidelines. When sufficient data does not exist, use estimates for determining the number of species benefits or abundance.
7. Do not include benefits to a larger area, such as previous or future phases of the current proposal area.
8. Include all habitat types (not just wetlands).
9. Make sure acreage figures are consistent with those given elsewhere in the proposal.
10. Include only benefits from actions covered by the proposal. For example, if the proposal includes acquisition of sites that need restoration, but restoration is not part of the proposal, do not include restored habitat values in answers to the questions. Note that unless restoration is also included in the proposal, proposals for acquisition of degraded wetlands will be evaluated based on the degraded condition and subsequent resource benefits.
11. If a new Matching Contributions Plan (MCP) is submitted with the proposal, include that acreage and those benefits in your answers. However, if the MCP component is a phase of a previously

- approved MCP, do NOT include the associated acreage and benefits in your answers.
12. Reviewers assign points based on information in the proposal. In addition, reviewers evaluate the questions and the proposal in relation to the group of proposals under review. Scores are available approximately ten weeks after the proposal due dates.
  13. Review the [U.S. Grant Administration Standards document](#) to see how Technical Assessment Question answers will be incorporated into the Assistance Award/Grant Agreement.

## TECHNICAL ASSESSMENT QUESTIONS FORMAT

---

### TECHNICAL ASSESSMENT QUESTION #1

**How does the proposal contribute to the conservation of waterfowl habitat?** (See [TAQ #1 example](#))

To assist you with developing TAQ 1, contact the [Migratory Bird Joint Venture](#) for your project's area for guidance on completing this section. Complete the table below using the waterfowl species lists provided, indicating the species that will be affected by **grant and match work** (do NOT include non-match). Under "Explanation of Benefits", succinctly explain how the proposal will impact waterfowl species. If the proposal is a phase of an ongoing project, address only the current phase activity/acreage.

**A. High priority species:** Tule Greater White-fronted Goose, Dusky Canada Goose, Southern James Bay Canada Goose, Northern Pintail, Mottled Duck, American Black Duck, Mallard, Lesser Scaup, Greater Scaup.

**B. Other priority species:** Pacific Greater White-fronted Goose, Wrangel Island Snow Goose, Atlantic Brant, Pacific Brant, Wood Duck, Redhead, Canvasback, Ring-necked Duck, Common Eider, American Wigeon, Cackling Goose.

**C. Other waterfowl:** (List up to five other waterfowl species from the following list)

**Duck Species:** Blue-winged Teal, Cinnamon Teal, Common Goldeneye, Long-tailed Duck, King Eider, Steller's Eider, Spectacled Eider, Black Scoter, White-winged Scoter, Surf Scoter, Muscovy Duck, Masked Duck, Green-winged Teal, Gadwall, Northern Shoveler, Bufflehead, Western Barrow's Goldeneye, Eastern Barrow's Goldeneye, Western Harlequin Duck, Eastern Harlequin Duck, Hawaiian Duck, Laysan Duck, Fulvous Whistling Duck, Black-bellied Whistling Duck, Mexican Duck, Ruddy Duck, Common Merganser, Red-breasted Merganser, Hooded Merganser

**Canada Goose Populations:** Atlantic, Lesser, Aleutian, North Atlantic, Vancouver, Taverner's Mississippi Valley, Shortgrass Prairie, Pacific, Rocky Mountain, Eastern Prairie, Tallgrass Prairie, Atlantic Flyway Resident, Mississippi Flyway Giant, Western Prairie/Great Plains, Hi-Line,

**Lesser Snow Goose Populations:** Western Central Flyway, Mid-Continent, Western Arctic, Greater Snow Goose, Ross's Goose

**Greater White-fronted Goose:** Mid-Continent, Western High Arctic Brant, Eastern High Arctic Brant, Emperor Goose, Hawaiian Goose

**Tundra Swan Populations:** Eastern, Western

**Trumpeter Swan Populations:** Rocky Mountain, Interior, Pacific Coast, Mute Swan

For the species listed above and using the table format below (see [TAQ #1 example](#)), estimate if sufficient data is available, how many individuals/pairs will use the grant and match tracts after the proposal is completed and for what life cycle stage(s).

Species	Numbers Estimated	Life Stage (Breeding, Migration, Wintering)	Explanation of Benefits (Identify individual tracts)
High Priority			
Species (under each category, add additional rows for each applicable species)			
Other Priority			
Species (under each category, add additional rows for each applicable species)			
Other			
Species (choose up to 5 species in this category, add additional rows for each applicable species)			

If tracts are not yet identified, briefly explain what procedure will be used to ensure that high quality habitat is targeted.

---

## TECHNICAL ASSESSMENT QUESTION #2

### How does the proposal contribute to the conservation of other wetland-associated migratory birds?

Using a table format (see [TAQ #2 example](#)), succinctly describe the impact of the grant and match work on each selected species. Do NOT include benefits from non-match work, and address only non-waterfowl species.

- Which species or population will benefit and in which Bird Conservation Region (BCR)?
- How many estimated individuals/pairs are expected to use the grant and match tracts and, if the grant or match tracts are being restored or enhanced, what is the expected increase in population numbers?
- How will the proposal activities positively affect the species and improve habitat quality?
- What life cycle stage will be supported by the project (If tracts are not yet identified, explain what procedure will be used to ensure that the high-quality habitat is targeted)?

#### A. Priority bird species:

**Identify up to ten priority bird species from the BCR lists (Attachment A) at the end of these instructions** that best demonstrate the benefits of the proposed activities to non-waterfowl species. Use habitat and population objectives from the species in the BCR (reference the BCR lists at the end of these instructions); for more information on BCRs, see <https://nabci-us.org/resources/bird-conservation-regions-map/>.

Species/BCR #	Numbers Estimated	Life Stage (Breeding, Migration, Wintering)	Explanation of Benefits (Identify individual tracts)

**B. Other wetland-associated bird species:**

**Identify up to ten bird species not included in the priority species lists provided in Part A** above that help demonstrate the benefits of the project activities to non-waterfowl species.

Species	Numbers Estimated	Life Stage (Breeding, Migration, Wintering)	Explanation of Benefits (Identify individual tracts)

---



---

**TECHNICAL ASSESSMENT QUESTION #3**

**How does the proposal location relate to the geographic wetland priorities described by the North American Waterfowl Management Plan, Partners in Flight, the U.S. Shorebird Conservation Plan, and/or the North American Waterbird Conservation Plan, along with regional priorities?**

**A. National wetland conservation priorities:**

Using the table format below, indicate the specific tracts that are in, partially in, or out of the national priority areas for wetland habitat conservation as outlined in the four major migratory bird conservation plans (North American Waterfowl Management Plan, Partners in Flight (songbirds), North American Waterbird Conservation Plan, and the U.S. Shorebird Conservation Plan). There is no narrative component.

Exact proposal location will be based on the GIS shapefile information you provide with the maps. **Do NOT include non-match activities.**



National Bird Plan Priority Areas	In	Partially In	Out
NAWMP			
PIF			
Wading Birds			
Shorebirds			

Below are additional tools for your use:

- National Migratory Bird Priority Plans and US Coastal Zone Interactive Mapper: <https://fws.maps.arcgis.com/apps/MapSeries/index.html?appid=632303c8dd8547e19b2b3198fac45078>
- North American Waterfowl Management Plan: <https://nawmp.org/>
- Partners in Flight (songbirds): <https://www.partnersinflight.org/plans/landbird-conservation-plan/>
- North American Waterbird Conservation Plan: <https://www.fws.gov/partner/north-american-waterbird-conservation-plan>
- U.S. Shorebird Conservation Plan: <https://www.shorebirdplan.org/> or <https://www.shorebirdplan.org/science/assessment-conservation-status-shorebirds/>

#### B. Regional wetland conservation priorities:

In the provided table, briefly describe how the proposed grant and match activities will address the current regional geographic priorities based on Joint Venture and other partner's science and planning information. Do not describe how the proposed activities will address the National plans referenced in Part A. It is prudent to work closely with [Joint Venture staff](#) to ensure that this proposal is based on the most current science and planning for all wetland associated migratory birds.

Regional and Other Plans	Description

#### TECHNICAL ASSESSMENT QUESTION #4

##### How does the proposal relate to the national status and trends of wetlands types?

For more information about wetland functions, maps, the classification system/types/codes used below, and national and regional status and trends, visit the National Wetlands Inventory (NWI) website: <https://www.fws.gov/program/national-wetlands-inventory>. Contact Joint Venture Coordinators for state or regional information. Not all wetland types are listed below, but they are given in the Cowardin report on the NWI website.

Complete the following table. In Section A, list the match and grant acreage by activity for each wetland type or group of types.

**DO NOT INCLUDE NON-ADD ACRES (NORMALLY INDICATED WITH PARENTHESES) OR NON-MATCH ACRES IN THIS TABLE.**

In Section B, list the acreage by type or group of types for each tract.

If your proposal is funded, you will be required to submit annual reports that compare actual accomplishments with the acreage figures and habitat types you give here. Additionally, you will be asked for actual accomplishments of your proposal in this format as part of your final report. This data will be used to determine the success of your proposal. See: [TAQ #4 Example](#)

For both sections, only use those activity rows required with your proposal. Please ensure the acreage totals provided in TAQ #4 match those totals provided on the summary page.

ACTIVITY AND TRACTS IN THE PROPOSAL	STATUS, TYPES, AND ACRES OF WETLANDS Note: Types subsidiary to types listed below have the same status.								UPLANDS	TOTAL
	DECREASING			STABLE			INCREASING	NO TREND DATA		
	PEM	PFO	E2Veg	E1	L	R	M2, PSS, PUB, E2US	PML, PRB, E2AB		
SECTION A										
Fee										
Easement										
Lease										
ACQUIRED TOTAL										
RESTORED										
ENHANCED										
ESTABLISHED										
TYPE TOTALS										
STATUS TOTALS										
GRAND TOTALS										
SECTION B										
Tract ID										
Tract ID										
Tract ID										
Tract ID										

**E1** = Estuarine Subtidal, **E2US** = Estuarine Intertidal Unconsolidated Shore, **E2AB** = Estuarine Intertidal Aquatic Bed, **E2Veg** = Estuarine Intertidal Vegetated (E2EM, Intertidal Emergent Marsh, E2FO, Estuarine Forested, and E2SS, Estuarine Intertidal Scrub-Shrub), **L** = Lacustrine, **M2** = Marine Intertidal, **PEM** = Palustrine Emergent, **PFO** = Palustrine Forested, **PML** = Palustrine Moss-Lichen, **PRB** = Palustrine Rock Bottom, **PSS** = Palustrine Scrub-Shrub, **PUB** = Palustrine Unconsolidated Bottom (PUB, Palustrine Unconsolidated Bottom, PAB, Palustrine Aquatic Bed, and PUS, Palustrine Unconsolidated Shore), **R** = Riverine. Upland category may include restored cropland.

Provide a brief narrative to describe upland habitats (e.g., cropland, grassland, forest) and the relationship to wetlands and migratory bird conservation (i.e., reason for including in proposal).

#### TECHNICAL ASSESSMENT QUESTION #5

**How does the proposal contribute to long-term conservation of wetlands and associated uplands?**

Complete the following table. In Section A, list the match and grant acreage by activity for each tenure category.

In Section B, list the acreage by tenure for each tract.

**Restoration, enhancement, and establishment activities should not be listed under the perpetuity tenure category without exceptional and appropriate justification, relative to tenure of agreements. The expectation of maintenance does not make a restoration, enhancement, or establishment**

perpetual.

If your proposal is funded, you will be required to submit annual reports that compare actual accomplishments with the acreage figures and habitat types in this proposal. Additionally, you will be asked to compare proposed versus actual accomplishments in this format as part of your final report. This data will be used to determine the success of your project. See: [TAQ #5 Example](#)

**For both sections, only use those activity rows required with your proposal. Please ensure the acreage totals provided in TAQ #5 match those totals provided on the summary page. Also include any non-add acres with parentheses in your proposal summary and TAQ #5 table. DO NOT INCLUDE NON-MATCH ACRES.**

ACTIVITY	ACRES BY LONGEVITY OF BENEFITS				TOTAL ACRES
	* Includes water control structures made of material other than wood. ** Includes wood water control structures and pumps.				
	PERPETUITY	*26-99	**10-25	< 10	
SECTION A					
Fee					
Easement					
Lease					
TOTAL ACQUIRED					
RESTORED					
ENHANCED					
ESTABLISHED					
TOTAL					
SECTION B					
Tract ID					
Tract ID					
Tract ID					
Tract ID					

Provide a brief narrative describing the significance of the proposal regarding:

- How the project area and tracts might be affected by climate change and other changing environmental conditions within the next 30-50 years,
- How the proposed activities will address, in a resilient and adaptive manner, any effects caused by climate change and other changing environmental conditions.

A good resource to consult is your regional USGS Climate Adaptation Science Centers:

[https://www.usgs.gov/ecosystems/climate-adaptation-science-centers/learn-about-regional-cascs?qt-science\\_support\\_page\\_related\\_con=0#qt-science\\_support\\_page\\_related\\_con](https://www.usgs.gov/ecosystems/climate-adaptation-science-centers/learn-about-regional-cascs?qt-science_support_page_related_con=0#qt-science_support_page_related_con)

Questions that might be discussed include:

- What national, state, or regional-level climate vulnerability/risk assessments have been conducted for the project area and what did they determine?
- Is the project area known from assessments or research to exhibit climate-resilient features or attributes?
- Are populations and the conservation status of priority species from Technical Assessment Questions #1 and #2 projected to change over the next 30-50 years?
- What climate-adaptive features or attributes do the project activities include?
- How are project activities compatible with or contribute to the U.S. Fish and Wildlife Services' Strategic Plan for Responding to changing environmental conditions

(<https://www.fws.gov/initiative/climate-change>), the National Fish, Wildlife & Plants Climate Adaptation Strategy (<https://www.fishwildlife.org/afwa-inspires/climate-adaptation-network>), or similar documents?

- What adaptation framework are you utilizing to address climate change?

#### **Climate Change Scoring:**

0 – No mention of impacts or approaches to address; mentions impacts but does not tie effects to fish and wildlife management

1 – Discusses impacts and ties these to fish and wildlife management

2 – Discusses impacts and ties these to fish and wildlife management; Discusses approach to management (such as through specific adaptation frameworks, science-driven assessments)

3 – Discusses impacts and ties these to fish and wildlife management; Discusses approach to management (such as through specific adaptation frameworks, science-driven assessments); Demonstrates how adaptive management or other resilient strategies are integrated into the proposal

---

### **TECHNICAL ASSESSMENT QUESTION #6**

**How does the proposal contribute to the conservation of habitat for wetland associated, Federally listed or proposed endangered species; wetland-dependent Species of Greatest Conservation Need (SGCN) from the appropriate State Wildlife Action Plan (SWAP); and other wetland-associated fish and wildlife that are specifically involved with the proposal?**

For more information on Federally listed species and critical habitat, visit the U.S. Fish and Wildlife Service's Endangered Species Program website: <https://www.fws.gov/program/endangered-species>. Click on Species Information or visit <https://ecos.fws.gov/ecp/> for comprehensive species-specific information. Visit the Service's Endangered Species Program contacts page <https://www.fws.gov/program/endangered-species/contact-us> for more information in a regional or state context. Under A and B below, list species that will be affected by the grant and match work (**do NOT include non-match tracts**) and succinctly provide the additional requested information to explain how the proposal will affect the species.

#### **A. Federally Threatened, Endangered, or Proposed candidate species:**

- What species will utilize the proposal area?
- Within the explanation of benefits section of the table, information provided for each species should answer:
  - How will the proposal improve habitat quality?
  - Importance of each tract or logical groupings of tracts in the proposal to the species.

Species	Explanation of Benefits

#### **B. Wetland-dependent species of greatest conservation need (SGCN) from the appropriate State Wildlife Action Plan (SWAP):**

List a MAXIMUM OF 10 Species: Do NOT list species listed in A, TAQ #1, or TAQ #2.

The SWAP for each State can be found here: <https://www1.usgs.gov/csas/swap/index.html>

- What species will utilize the proposal area?

- Within the explanation of benefits section of the table, information provided for each species should answer:
  - How will the proposal improve habitat quality?
  - Importance of each tract or logical groupings of tracts in the proposal to the species.

Species	Explanation of Benefits

## TECHNICAL ASSESSMENT QUESTION #7

### How does the proposal satisfy the partnership purpose of the North American Wetlands Conservation Act?

#### A. Ratio of the Non-Federal Match to the Grant Request:

State the ratio of the non-Federal match to the grant request (e.g., the ratio of a non-Federal match of \$1,500,000 to a \$1,000,000 grant request = 1.5:1). A 2:1 match or higher gains maximum points. To receive credit, signed Partner Contribution Statements from matching partners must be submitted with the proposal.

#### B. 10% Matching Partners:

List the matching partners who contribute at least 10% of the grant request (e.g., for a \$1,000,000 grant request, list the matching partners who contribute at least \$100,000). To receive credit, signed Partner Contribution Statements from matching partners must be submitted with the proposal. **It is not acceptable to lump multiple landowners to achieve the 10% match.**

#### C. Partner Categories (includes non-match):

Show the partner diversity by listing each partner (irrespective of contribution amount) under one of the following categories. To receive credit, signed Partner Contribution Statements from matching and non-matching partners must be submitted with the proposal.

##### State agencies:

**Non-governmental conservation organizations:** (e.g., local wildlife club, Ducks Unlimited, Inc., The Nature Conservancy)

**Local governments, counties or municipalities:** (e.g., Conservation District)

**Private landowners:**

**Profit-making corporations:** (e.g., Exxon)

**Native American governments or associations:**

**Federal agencies:**

**Other partner groups:**

For NAWCA purposes, a partner is defined as a group, agency, organization, or individual which participates in a specific NAWCA project as a match provider.

Non-match partners are eligible for inclusion in this section if the non-match funds are pooled with grant or match funds to accomplish acreage goals.

A partner letter is required for each partner, including non-match partners.

**D. Important Partnership Aspects (new grant recipient, significant new partners, unique partners, large numbers of partners under any category in C above, non-financial contributions):**

Briefly state any particularly significant or unique benefits that are provided by the proposal partnerships.

**E. Public Access:**

Open to public access means that any member of the public can legally enter NAWCA proposal tract/tracts subject to only modest restrictions (e.g., daylight hours only, small entry fee, etc.). Under this definition, proposal tracts may be closed during certain times of the year or certain types of activities may be limited to facilitate habitat and wildlife management (manage for hunting access, migratory bird sanctuary or other environmental impacts, etc.). In this section, please explain the nature of the public access per tract. How much acreage will be open to public access? Explain what public access activities will occur on what acres. How much acreage will be closed to public access and why?

**Public Access Scoring:** This definition will be applied to all types of proposal activity including fee acquisitions, easements, restorations, enhancements, and wetland establishments, regardless of whether the activity is funded with grant or match funds (including old match).

2, 1, or 0 points will be awarded as follows:

- 2 points – open to public hunting
- 1 point – open to other public access
- 0 points – closed to public access

## SCORING TABLE

CATEGORIES OF QUESTIONS	Points = 100
<b>#1. WATERFOWL</b> A. High priority species B. Other priority species C. Other waterfowl	MAXIMUM = 15 0-7 0-5 0-3
<b>#2. WETLAND-ASSOCIATED MIGRATORY BIRDS</b> A. Priority bird species B. Other wetland-associated bird species	MAXIMUM = 15
<b>#3. NORTH AMERICAN GEOGRAPHIC PRIORITY WETLANDS AS RECOGNIZED BY MAJOR MIGRATORY BIRD CONSERVATION PLANS</b> A. National geographic priority wetland areas B. Regionally important wetland areas	MAXIMUM = 15 0-9 0-6
<b>#4. WETLANDS STATUS AND TRENDS</b> A. Decreasing wetlands types B. Stable wetlands types C. Increasing wetlands types D. No trend data types E. Uplands	MAXIMUM = 10 0-10 0-4 0-1 0-1 0-8
<b>#5. LONG-TERM CONSERVATION &amp; CLIMATE CHANGE</b> A. Benefits in perpetuity B. Benefits for 26-99 years C. Benefits for 10-25 years D. Benefits for <10 years E. Significance to long-term conservation <u>and</u> climate change	MAXIMUM = 15 0-12 0-8 0-6 0-4 0-3
<b>#6. ENDANGERED SPECIES AND OTHER WETLAND-DEPENDENT FISH AND WILDLIFE</b> A. Federal endangered, threatened or proposed species = 1, 2, >2 species B. State Species of Greatest Conservation Need = <u>0-10</u> species	MAXIMUM = 10 0-3, 0-4, 0-5 0-5
<b>#7. PARTNERSHIPS</b> A. Ratio of non-Federal match to grant request = $\leq 1:1$ ; $>1:1 < 1.5:1$ ; $\geq 1.5:1 < 2:1$ ; $\geq 2:1$ B. Matching partners contributing 10% of the grant request = 0-1, 2, 3, > 3 C. Partner categories = 1, 2, 3, > 3 D. Important partnership aspects E. Public Access	MAXIMUM = 20 0, 1, 3, 6 0, 1, 2, 3 0, 2, 3, 4 0-5 0-2

---

---

## PARTNER CONTRIBUTION STATEMENTS

- Each matching partner (including the grantee and private landowners, if providing funds and/or donating title to property) and non-matching partner (including Federal partners) listed in the proposal must complete a Statement.
- Each statement must be submitted with the proposal before the deadline date.
- The statements must be signed and dated for the contribution to be documented.
- It is preferred that each partner listed in the proposal complete a statement. If this cannot be done, another party may vouch for the matching partner, but no credit will be gained in the Partnership Technical Assessment Question 7 under the categories of "10% partners" and "partner categories". These situations will be handled on a case-by-case basis.
- If you want to show support from non-funding sources, do not send statements, but instead include a statement in the proposal in Technical Assessment Question 7-part D such as "To illustrate the overwhelming support for this proposal, we have 37 letters on file from landowners and State and Federal representatives."
- The grantee's statement should not be a cover or transmittal sheet for the proposal.
- If the North American Wetlands Conservation Council has approved a prior Matching Contributions Plan that involves match for the current proposal, include a copy of the original approval letter or email in this section. Matching contribution plans can only be submitted for excess old match associated with the acquisition of a single tract.
- Remember that the contribution amount on the statement must be the same as the amount shown in the proposal for the partner. If the amount differs in any section of the proposal or on the statement, the lesser of the two will be considered the partner's contribution. If there are many such inconsistencies in the proposal, it will be returned as ineligible.
- The partner contribution letter template has been updated to include a question that asks if and how the project will benefit tribal hunting and fishing treaty rights. This change came in response to the House of Representatives Committee on Appropriations Report submitted to the Department of the Interior, Environment, and Related Agencies Appropriations Bill for Fiscal Year 2018, under the section North American Wetlands Conservation Fund.



## **PARTNER CONTRIBUTION LETTER TEMPLATE**

### **NORTH AMERICAN WETLANDS CONSERVATION ACT PROPOSAL PARTNER CONTRIBUTION STATEMENT**

**NOTE: The grantee organization that submits the original proposal and accompanying MCP is responsible for maintaining the MCP records throughout the life of the plan. That grantee organization must provide a partner letter with each proposal using the MCP match acknowledging the amount of MCP funds used and the remaining MCP balance. If you also have non-match partners associated with your project, it is beneficial if a partner letter is submitted for accountability.**

**What is the title of the proposal?**

**What is the name of your organization (private landowners/individuals indicate “Private”)?**

**When will you make the contribution?**

**What is the value of your contribution and how did you determine the value? Does the contribution have a non-Federal origin? If this is based on a fund-raising event or other future action, if that future action fails, will you still provide the contribution amount?**

**What long-term migratory bird and wetlands conservation work will the contribution cover?**

**Does the proposal correctly describe your contribution, especially the amount?**

**If applicable to the proposal, is your organization competent to hold title to, and manage, land acquired with grant funds and are you willing to apply a Notice of Grant Agreement or other recordable document to the property?**

**Please confirm that your contribution has not been used to meet any other federal programs match or cost share requirements.**

**Will the project benefit tribal hunting and fishing treaty rights and if so, how?**

**Do you have any additional comments?**

**Signature:**

**Name (printed), Title, and Affiliation:**

**Date Signed:**

---

---

## **OPTIONAL MATCHING CONTRIBUTIONS PLAN (MATCH PLAN OR MCP)**

A Matching Contributions Plan (MCP) is defined as eligible old match (acquisition only) that was obtained within the past two years and is more than what will be used for the current proposal. The purpose of an MCP is to maintain the eligibility of this old match beyond two years for the current proposal and future proposal phases. MCPs may be utilized for U.S. Standard projects only and are valid for five years from the date of Council approval. Other sections of these instructions contain information on how to apply the MCP dollars, acres, and natural resource benefits in future proposals. Matching contribution plans can only be submitted for excess **old** match associated with the acquisition of a **single tract**.

- **What is the Match Plan Amount and Purpose?** State the amount of match that must remain eligible for future proposals (use this same amount in the lower right-hand cell of the example below) and briefly describe the conservation goals to be achieved by future proposals supported by this match.
- **What is the Match Plan Intent?** Describe how/why you obtained the additional match, including the sources (partners) and the relationship of these partners to the proposal.
- **What is the Match Plan Need?** Describe why you need this match to complete future phases of the proposal and why obtaining new match for these proposals is not feasible.
- **Is there a Match Plan Chart?** Provide a chart showing Match Plan partner contributions used in the current proposal and future proposals. (See the example.)
- **Where is the location of the MCP acquisition tract?** Describe in detail the location of the tract (city, county, state, and latitude/longitude).

See: [Optional Matching Contributions Plan Example](#)

---

---

## **STANDARD FORM-424s AND PROJECT ABSTRACT SUMMARY INSTRUCTIONS**

The SF-424D Assurances for Construction Projects form is required for all NAWCA projects (any project that involves acquisition, restoration, enhancement, or establishment is considered a construction project).

All applicants, except Federal Agencies, are required to submit a completed Application for Federal Assistance (SF-424) AND Assurances Construction Programs (SF-424D) form along with their proposal application. We recommend that SF-242C budget form is also completed. All SF-424 forms now can be completed in <https://www.grantsolutions.gov/> when you apply for a directed announcement.

**The address on the SF-424 (#8d) must match the address associated with the DUNS/Unique Entity ID number (#8c)!** The following instructions for completing the SF-424 to accompany a NAWCA proposal supersede those on the back of the SF-424.

<b>CELL NUMBER and TITLE</b>	<b>INSTRUCTIONS</b>
<b>1. Type of Submission</b>	Check "Application"
<b>2. Type of Application</b>	Check "New"
<b>3. Date Received</b>	Enter date completing SF-424
<b>4. Applicant Identifier</b>	Leave blank
<b>5. a. Employer Identification</b>	Leave blank
<b>5. b. Federal Award Identifier</b>	Leave blank

CELL NUMBER and TITLE	INSTRUCTIONS
6. Date Received by State	Leave blank
7. State Application Identifier	Leave blank
8. Applicant Information (a-f)	Complete all required information in sections a-f
9. Type of Applicant	Complete for your organization
10. Name of Federal Agency	Enter "DOI-U.S. Fish and Wildlife Service"
11. Catalog of Federal Domestic Assistance Number and Title	Enter "15.623" and "North American Wetlands Conservation Fund"
12. Funding Opportunity Number/Title:	Enter "F23AS00009" and "NAWCA 2023-2 US Standard Grants"
13. Competition Identification Number/Title:	Will automatically fill in from #12
14. Areas Affected by Project	Enter only information for "Counties and States" that the tract(s) are included in; if tract(s) are unknown, then list all counties within the project area or indicate 'statewide' if applicable
15. Descriptive Title of Applicant's Project	Enter title of proposal
16. Congressional Districts of Applicant/Project	Enter information for a and b.
17. Proposed Project Start and End Dates	Enter proposed project start and end dates.
18. Estimated Funding	<b>Do not include non-match \$.</b> In "a", include only NAWCA grant \$. In "b-e", include only matching partner \$. For "e-Other", include private organizations, etc. Leave "f-Program Income" blank
19. Is Application Subject to Review by State EO 12372 Process?	Required to answer but only applicable to states
20. Is Applicant Delinquent on any Federal Debt?	Required to answer
21. Authorized Representative	SIGNATURE AND DATE REQUIRED by the authorized representative of the applicant organization. We will not accept a typed signature.

FYI: On January 1, 2022, DOI implemented the project abstract summary in GrantSolutions. The Project Abstract is a concise summary of a grant project. The summary typically describes the mission and goals of the project, the population it will serve, and what impact it may have on the community. Information for the project abstract summary can be taken from project narrative and include/avoid the following:

- Avoid acronyms or Federal or agency-specific terminology;
- Include plain language description Award purpose;
- Activities to be performed;
- Deliverables and Expected Outcomes;
- Intended beneficiary(ies); and
- Subrecipient activities if known or specified at the time of award

Project Abstract Summary is limited to 1 page or less (no more than ~4000 characters) and the use of Times New Roman font size 12 is recommended.

---

---

## MAPS

Include maps as the last attachment on your proposal narrative. Overall project area and individual known tract maps are required.

For the project area, provide at least two maps: one that conveys an understanding of all conservation activities in the project area boundary including federal, state, and NGO conservation lands; and one that includes location of all grant and match tracts in the proposal within the project area boundary.

The project area is a larger, defined area that encompasses the project's tract(s). A project area can best be described as follows:

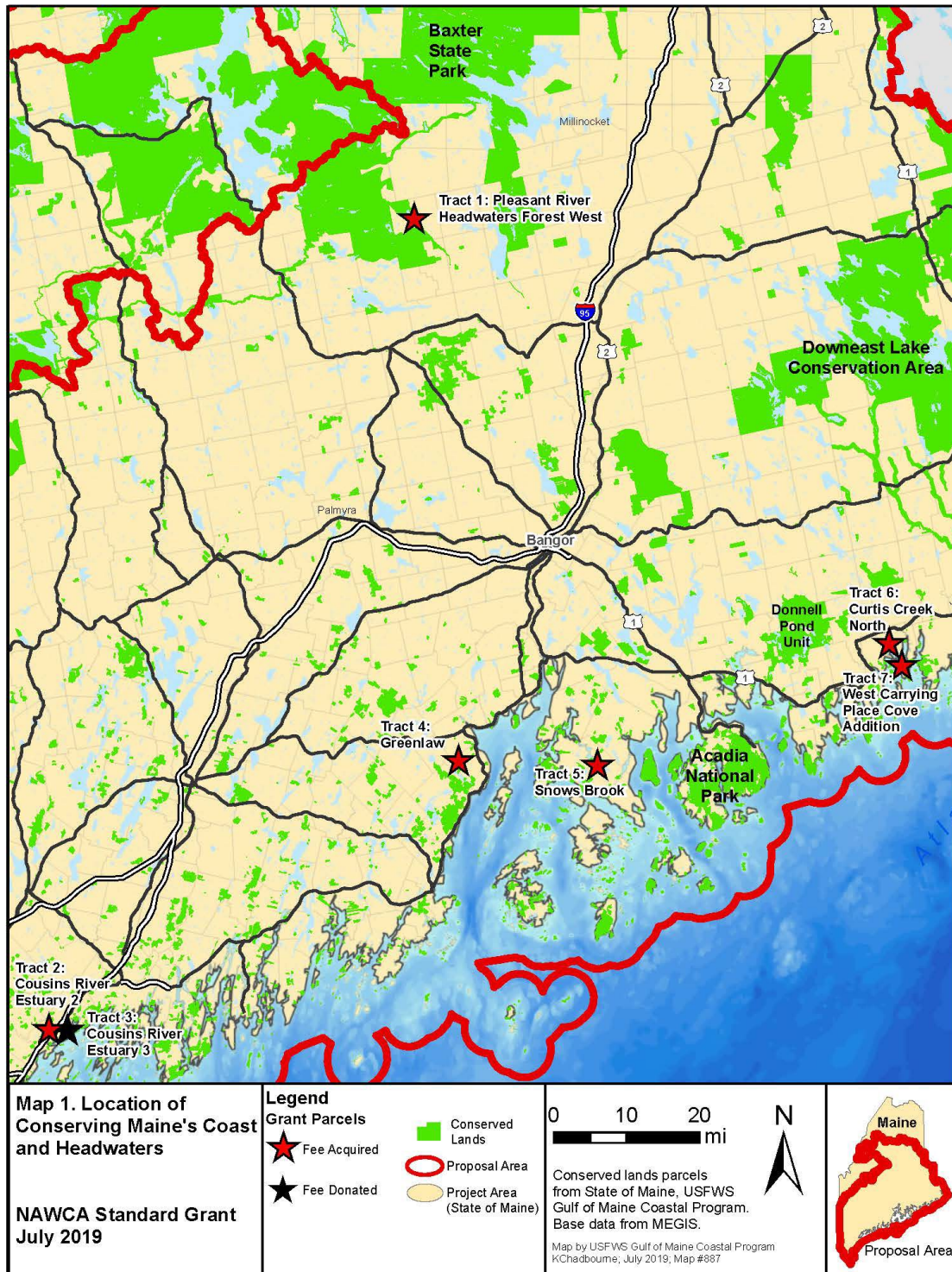
- area that is part of a wetlands conservation plan;
- areas in the same wetlands system (e.g., watershed or river basin);
- areas that are managed to meet the same wetlands objectives;
- areas that are in close proximity;
- areas that provide direct benefits to each other; or
- defined administrative boundaries such as township, city, or county(ies).

Please keep in mind that if your project is funded and a tract needs to be substituted, then the substitution tract(s) must be located within the defined project area boundary.

Three examples of project area maps are provided below. These maps represent large-, intermediate-, and small-scale project areas. Three examples of tract maps are also provided. Maps are critical sections of the proposal. Well-constructed and informative maps can have a significant impact on understanding the scope and significance your proposal has to wetland conservation. This understanding will be reflected in the scoring process. Your project area maps should include:

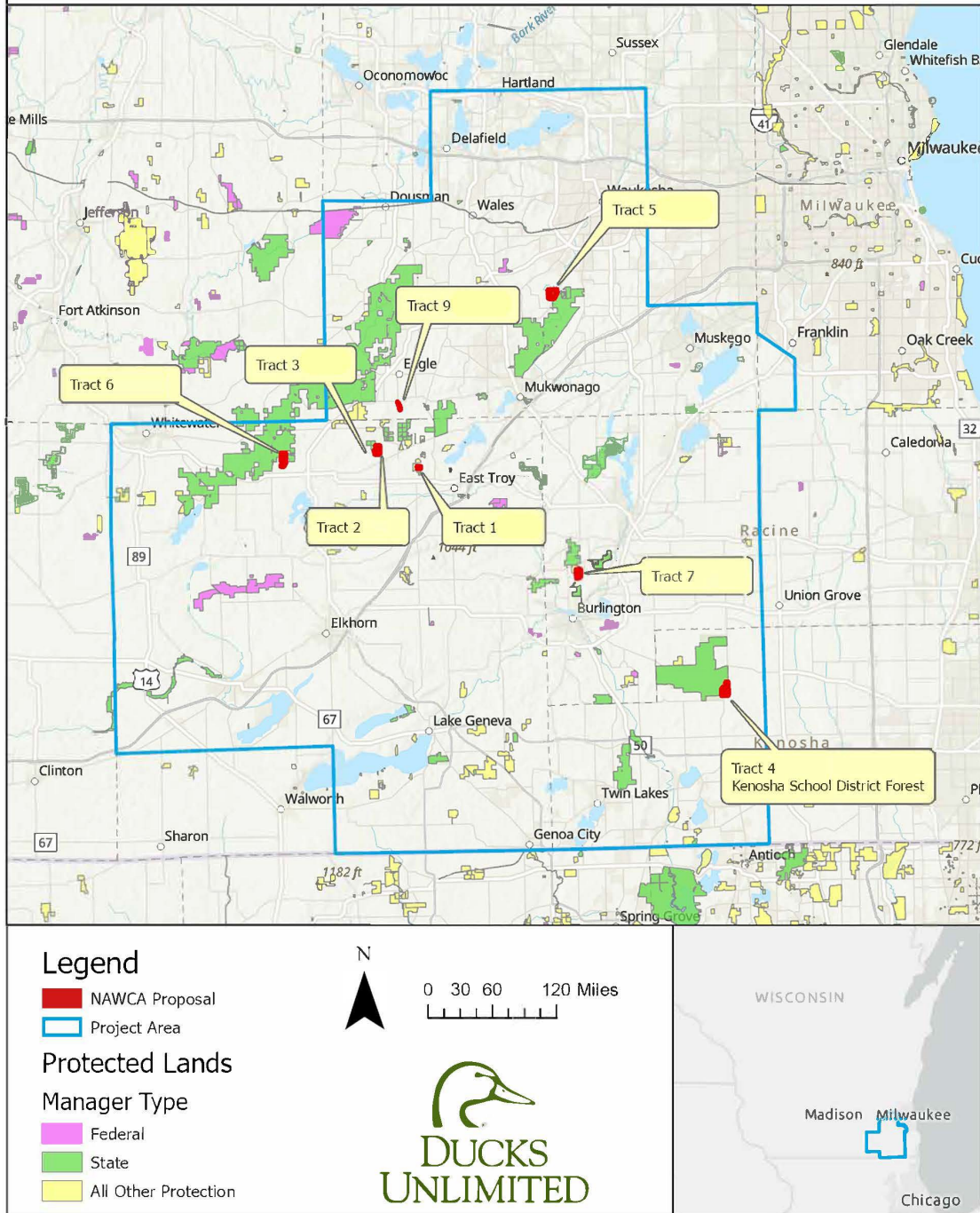
- Proposal title
- Location of the ENTIRE proposal area (all grant, match, and project area) within State(s) and counties
- Identification and location of all fee-title, easement and lease tracts (or acquisition priority areas, if tracts have not been identified)
- Identification and location of all restoration, enhancement, and establishment tracts, major water control structures and other major restoration/enhancement/establishment features
- A legend
- Map scale
- A north directional arrow
- Location of natural features (rivers, lakes) to show how the proposal fits into the natural landscape
- Location of previous NAWCA projects and future proposal sites
- If applicable and possible, where the proposal is in relation to a larger wetlands conservation project (show larger project boundary and boundary of current proposal).

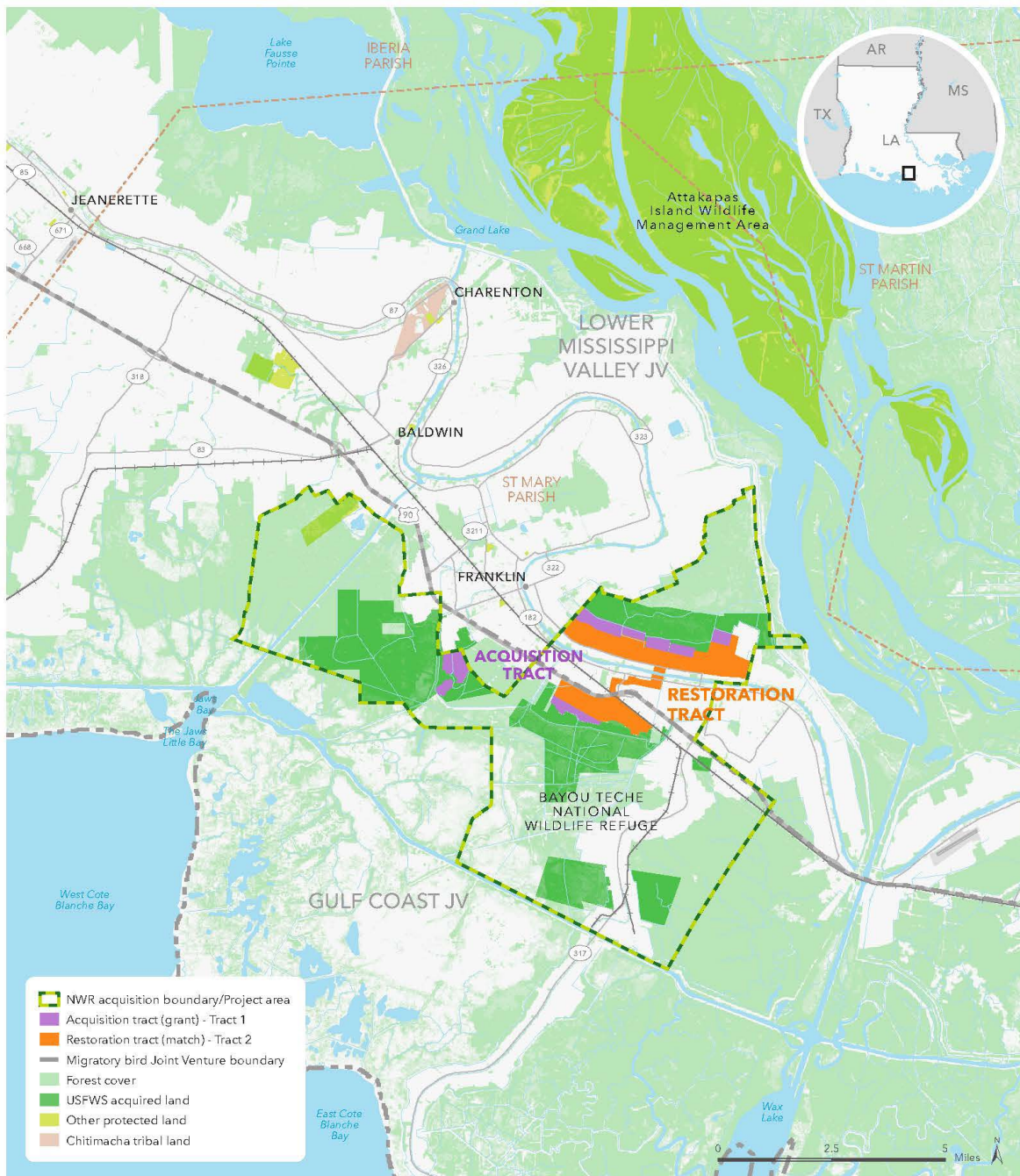
## PROJECT AREA MAP EXAMPLES





# Mukwonago Fox Focus Area Phase III





# Bayou Teche NWR Restoration

## PROJECT AREA

March 26, 2020. Copyright © The Trust for Public Land. The Trust for Public Land and The Trust for Public Land logo are federally registered marks of The Trust for Public Land. Information on this map is provided for purposes of discussion and visualization only. [www.tpl.org](http://www.tpl.org)





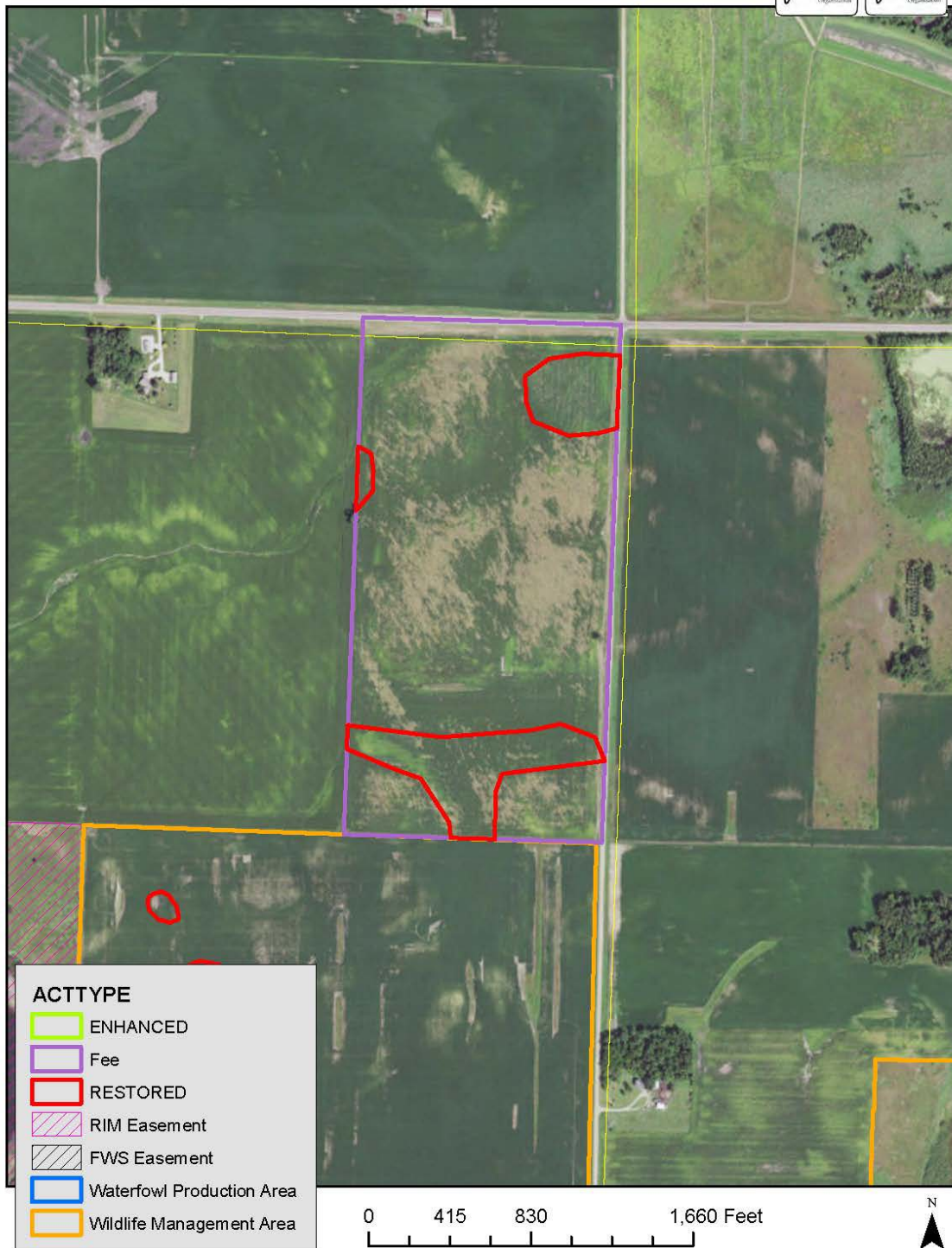
## TRACT MAP EXAMPLES

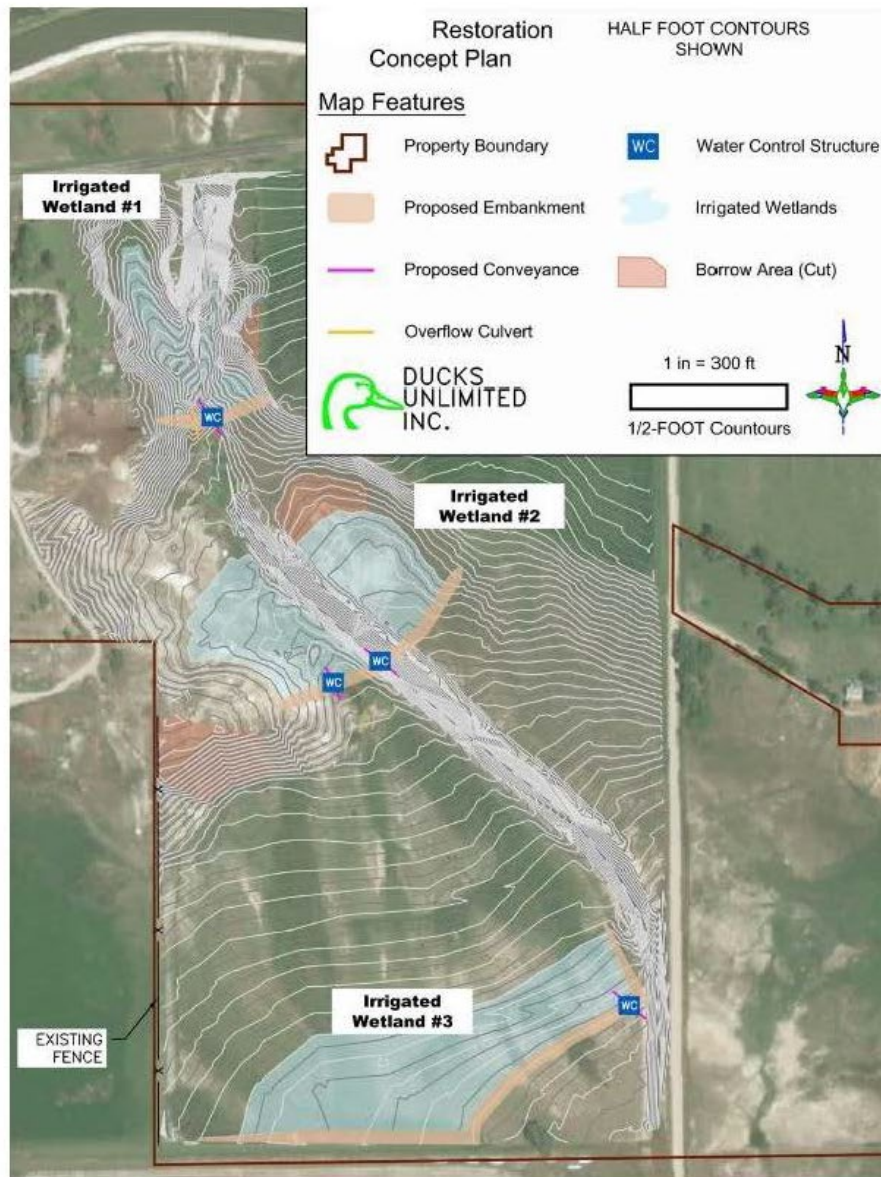


Tract 5 - 57 acres to be added to the Dow Woods Unit of San Bernard NWR.



Iowa Minnesota Prairie Potholes IV  
 Tract- 9: Caron WMA Wetland Restoration  
 (10) acres- G





**Tract 5 KNR:** Project will include installing three embankments and four water control structures. Embankments will be seeded with high diversity seed mixture.

---

---

## GIS SHAPEFILE INSTRUCTIONS

Please provide a single GIS shapefile that was used to create the maps. The shapefile submitted should use a GCS\_WGS\_1984 projection and the attribute table should contain a name for each polygon which corresponds to a tract listed in the proposal tract table.

- Only one GIS shapefile should be submitted for each proposal. The shapefile must be a polygon(s), not points or lines.
- Submit the shapefile as a .zip file. The submitted shapefile should have these file extensions, at minimum: **.shp, .dbf, .shx, .prj, .xml**. Any other extensions that are submitted are extra, but do not delete these.
- The shapefile must contain multiple polygons representing the overall project area and location of each of the tracts involved in the project.

The attribute table should **very closely resemble the tract table**, with a few exceptions. The shapefile should contain the Project Name, Total Acreage (you do not need to break out the wetland/upland acres), and Project Area entry. Tract Name is optional if you have instead been using Tract ID throughout the proposal. The other fields are mandatory and should follow these field property *suggestions*:

- FID – *automatically assigned*
- Shape – Polygon. *If your shapefile is in Polygon ZM format, please convert it to a standard Polygon.*
- PROJ\_NAME – Text; Length: default
- TRACT\_ID – Text; Length: default. *Tract ID should match the ID used throughout the proposal and Tract Table. You may leave this field entry blank for the Project Area.*
- ACTTYPE – Text; Length: default. *List the abbreviated activity per tract using this key: FA = Fee Acquired, FD = Fee Donated, EA = Easement Acquired, ED = Easement Donated, LA = Lease Acquired, LD = Lease Donated, RS = Restored, EN = Enhanced, WE = Wetland Established. You may leave this field entry blank for the Project Area.*
- TRACT\_NAME – Optional. Text; Length: default. *You may leave this field entry blank for the Project Area.*
- ACREAGE – Double; Default Precision and Scale. *Total acreage of wetland and upland components. You may leave this field entry blank for the Project Area.*
- FUNDING – Text; Length: default. *Funding category (Grant, Old Match, New Match, and Non-Match). You may leave this field entry blank for the Project Area.*
- COUNTY – Text; Length: default. *You may leave this field entry blank for the Project Area.*
- STATE – Text; Length: default. *Two letter state abbreviation. You may leave this field entry blank for the Project Area.*
- LATITUDE – Double; Default Precision and Scale
- LONGITUDE – Double; Default Precision and Scale
- HOLDER – Text; Length: default *Final Title Holder. You may leave this field entry blank for the Project Area.*

Any additional attribute fields submitted will be considered extra information.

For tracts that will be determined at a time after the project is funded, please still list the tract in the attribute field. Assign the tract with the same geographical boundary as the Project Area.

---

## PROPOSAL EASEMENT, LEASES, AND INDIRECT COST RATE AGREEMENT

Have you included the following?

- **Copies of easements and leases** in place when the proposal was submitted and models/templates for easements and leases to be acquired through the proposal.
- **Negotiated Indirect Cost Rate Agreement (NICRA):** If you are requesting grant funds for indirect costs or using indirect costs as match, attach a copy of **your current approved negotiated indirect cost rate agreement** (and any other former approved negotiated indirect cost rate agreement used to determine match costs in this proposal) signed by your agency.

---

## PROPOSAL EXAMPLES BY SECTION

1. [Summary Page](#)
2. [Financial Plan Table](#)
3. [Work Plan](#)
4. [Tract Table](#)
5. [TAQ #1](#)
6. [TAQ #2](#)
7. [TAQ#3](#)
8. [TAQ #4](#)
9. [TAQ #5](#)
10. [Optional Matching Contribution Plan](#)

## PROPOSAL SUMMARY EXAMPLE

*NOTE: This example is adapted from a previous submission.*

### NORTH AMERICAN WETLANDS CONSERVATION ACT PROPOSAL SUMMARY Des Moines River Valley Wetlands, Iowa

COUNTIES, STATE, CONGRESSIONAL DISTRICTS: Davis, Des Moines, Henry, Jasper, Jefferson, Keokuk, Lee, Lucas, Mahaska, Marion, Monroe, Polk, Van Buren, Wapello, Warren, and Washington; Iowa; Congressional Districts 2, 3, and 4.

JOINT VENTURE: Upper Mississippi River/Great Lakes

BIRD CONSERVATION REGION: 22-Eastern Tallgrass Prairie

GRANT AMOUNT	\$1,000,000
--------------	-------------

Allocation: Iowa Department of Natural Resources	\$1,000,000
--	-------------

MATCHING PARTNERS	\$3,549,100
-------------------	-------------

Grantee: Iowa Department of Natural Resources	\$2,015,000
---	-------------

Iowa Natural Heritage Foundation	\$620,650
----------------------------------	-----------

Lee County Conservation Board	\$789,650
-------------------------------	-----------

Hardwood Timberland Unlimited	\$73,800
-------------------------------	----------

Pheasants Forever, Warren County Chapter	\$20,000
--	----------

Pheasants Forever, Iowa Capital Chapter	\$10,000
---	----------

Pheasants Forever, Lee County Chapter	\$10,000
---------------------------------------	----------

Three Rivers Conservation Foundation	\$10,000
--------------------------------------	----------

If there is an MCP, under Matching Partners indicate what partner is contributing to the matching contribution plan.

If Iowa Natural Heritage Foundation is providing MCP, list MCP at the end of their title. If a partner is contributing MCP as well as additional match, then include the partner's name twice.

Iowa Natural Heritage Foundation MCP	\$2,500,000
--------------------------------------	-------------

Iowa Natural Heritage Foundation	\$50,000
----------------------------------	----------

GRANT AND MATCH - ACTIVITIES, COSTS AND ACRES	\$4,549,100/3,327 acres
---	-------------------------

Fee Acquired	\$3,924,100/2,438 acres
--------------	-------------------------

Enhanced	\$622,000/889 acres
----------	---------------------

Indirect Costs	\$3,000
----------------	---------

#### NON-MATCHING PARTNERS

U.S. Fish and Wildlife Service	\$50,000
--------------------------------	----------

PROPOSAL PURPOSE AND DESCRIPTION: The purpose of this project is to acquire 826 acres and restore 2,000 acres of wetland and associated upland habitats along the main-stem tributaries of the Mississippi River which traverse central and southern Iowa. This is phase two of four. The Phase I project (Iowa River Corridor) focused on the central and lower Iowa River. This proposal offers an equally impressive number and quality of wetland conservation projects along the Skunk and Des Moines Rivers. Through an extensive planning process, we will focus protection and restoration activities on two of the largest wetland habitat complexes in the state of Iowa: Pool 19 on the Mississippi River and Red Rock Reservoir on the Des Moines River. Both areas are known for the large number of waterfowl and diverse assemblages of shorebirds, herons, rails, and other waterbirds they host during both spring and fall



migration.

**HABITAT TYPES AND WILDLIFE BENEFITTING:** The proposal area is an important part of a major migration corridor for waterfowl, including Lesser Scaup, and other wetland birds moving north from the Central Mississippi River to the Prairie Pothole Region (PPR) and other breeding grounds to the North and West. The area includes important mid-latitude migration habitats on the Central Mississippi River and provides similar floodplain habitats along the central and lower Des Moines and Skunk Rivers to expand on a series of large habitat complexes that serve as important migration stopover sites. The added semi-permanent wetlands and seasonally flooded mud flats and moist soil management areas will increase the number of migratory birds using these areas during spring and fall migrations. The area also supports breeding populations of a wide variety of migratory bird species. This proposal conserves a diverse set of palustrine herbaceous and forested wetlands along with some of the best remaining mature bottomland forest and adds to some large blocks of tallgrass prairie. These habitats are additions to the large wetland complexes, and will improve the water quality, aquatic vegetation, and invertebrate communities in these important migration habitats.

**PUBLIC BENEFITS/PUBLIC ACCESS:** The proposal tracts provide excellent access to both structured and unstructured opportunities to experience, appreciate, and learn about Iowa's native floodplain wetland habitats and the benefits of reconnecting the river to its floodplain. This proposal will provide significant improvements in flood control and water quality through wetland and grassland habitat restoration which include conversion of row crop agriculture within and adjacent to the floodplain of the Des Moines and Skunk Rivers. Every tract included in this project will be open to public access, however, some consumptive and passive use restrictions may apply. Public fishing, swimming, hiking, bird watching, natural resource interpretation, scientific education and research and scenic enjoyment will be allowed.

**NEW PARTNERS:** This project marks a new partnership with the Lee and Warren County Conservation Boards. The significant work of these two county conservation organizations and the local citizens, businesses, and conservation groups with which they work was the impetus for initiating this proposal.

**RELATIONSHIP TO PREVIOUSLY FUNDED NAWCA PROPOSALS:** This project complements four other completed and ongoing NAWCA proposals that have focused on creating large functional wetland complexes within central Iowa.

**THREATS AND SPECIAL CIRCUMSTANCES:** Major threats to Iowa's wetlands today include non-point source pollution, silt accumulation, increased surface flows and drainage inputs, exploding rough fish populations and a general lack of infrastructure needed to adequately maintain and manage these sites. As the health and biological integrity of these wetlands continues to deteriorate, future restoration and enhancement efforts will become increasingly more difficult and expensive. A significant match contribution (Iowa DNR - \$2,015,000) will be lost if this proposal is not funded this year.

## FINANCIAL PLAN TABLE EXAMPLE

### PROPOSAL FINANCIAL TABLE

ACTIVITIES	GRANT \$	MATCHING PARTNERS				TRACT ID	NON-MATCH \$
		ABBREVIATED PARTNER NAME	OLD MATCH \$	NEW MATCH \$	TOTAL MATCH + GRANT \$		
Land Costs: Fee Acquired	\$180,000	IDNR			\$180,000	1	
		LCCB		\$580,000	\$580,000	1	
	\$45,000	IDNR			\$45,000	2	
		INHF		\$620,650	\$620,650	2	
		LCCB		\$154,350	\$154,350	2	
		HTU	\$73,800		\$73,800	3	
		IDNR	\$475,000		\$475,000	4	
		PF-L		\$10,000	\$10,000	5	
		TRCF		\$10,000	\$10,000	5	
		IDNR		\$63,000	\$63,000	6	
		PF-W		\$20,000	\$20,000	7	
		PF-IC		\$10,000	\$10,000	7	
		IDNR	\$1,027,000		\$1,027,000	8	
	\$475,000	IDNR		\$125,000	\$600,000	11	
Appraisals & Other Acquisition Costs		LCCB		\$25,000	\$25,000	1	
		LCCB		\$30,300	\$30,300	2	
<b>A. TOTAL FEE ACQUIRED</b>	<b>\$700,000</b>		<b>\$1,575,800</b>	<b>\$1,648,300</b>	<b>\$3,924,100</b>		
<b>G. TOTAL ACQUIRED (Sum of A,B,C,D,E,F)</b>	<b>\$700,000</b>		<b>\$1,575,800</b>	<b>\$1,648,300</b>	<b>\$3,924,100</b>		
Contracts	\$100,000	IDNR		\$150,000	\$250,000	9	
	\$80,000	IDNR		\$162,000	\$242,000	10	
Materials & Equipment	\$55,000	IDNR			\$55,000	9	
		USFWS				9	\$25,000
	\$25,000	IDNR		\$10,000	\$35,000	10	
		USFWS				10	\$25,000
Non-Contract Personnel & Travel	\$20,000	IDNR			\$20,000	9	
	\$20,000	IDNR			\$20,000	10	
<b>I. TOTAL ENHANCED</b>	<b>\$300,000</b>		<b>\$0</b>	<b>\$322,000</b>	<b>\$622,000</b>		<b>\$50,000</b>
<b>M. GRAND TOTAL DIRECT (Sum of G and H,I,J,K,L)</b>	<b>\$1,000,000</b>		<b>\$1,575,800</b>	<b>\$1,970,300</b>	<b>\$4,546,100</b>		<b>\$50,000</b>
<b>N. TOTAL INDIRECT</b>	<b>\$0</b>	IDNR	<b>\$0</b>	<b>\$3,000</b>	<b>\$3,000</b>		<b>\$0</b>
<b>GRAND TOTAL (Sum of M and N)</b>	<b>\$1,000,000</b>		<b>\$1,575,800</b>	<b>\$1,973,300</b>	<b>\$4,549,100</b>		<b>\$50,000</b>
PARTNER INFORMATION	GRANT \$	MATCHING PARTNERS				TRACT ID	NON-MATCH \$
		ABBREVIATED PARTNER NAME	OLD MATCH \$	NEW MATCH \$	TOTAL MATCH + GRANT \$		
Iowa Department of Natural Resources	\$1,000,000	IDNR	\$1,502,000	\$513,000	\$3,015,000	1,2,4,6,8,9,10	
Iowa Natural Heritage Foundation		INHF		\$620,650	\$620,650	2	
Lee County Conservation Board		LCCB		\$789,650	\$789,650	1,2	
Hardwood Timberland Unlimited		HTU	\$73,800		\$73,800	3	
Pheasants Forever, Warren County Chapter		PF-W		\$20,000	\$20,000	7	
Pheasants Forever, Iowa Capital Chapter		PF-IC		\$10,000	\$10,000	7	

Pheasants Forever, Lee County Chapter		PF-L	\$10,000	\$10,000	5	
Three Rivers Conservation Foundation		TRCF	\$10,000	\$10,000	5	
U.S. Fish and Wildlife Service		USFWS			9,10	\$50,000
<b>GRAND TOTAL</b>	<b>\$1,000,000</b>		<b>\$1,575,800</b>	<b>\$1,973,300</b>		<b>\$50,000</b>

NOTE: In this example, there is no MCP involved and the “Previously Approved MCP” row is not included.

#### WORK PLAN EXAMPLE

NOTE: This Work Plan example lists only two of the acquisition tracts involved (all tracts are shown in the TAQ 4, TAQ 5, and Tract Table examples).

#### WORK PLAN (FINANCIAL PLAN JUSTIFICATION)

##### TRACT 1 - Jones

**OVERALL ACRES AFFECTED: 459**

**STATE/FED AGENCIES HOLDING INTERESTS: Lee County (IA) Conservation Board**

##### Acreage Summary of Grant/Match Activities on the Tract:

**Acquisition: 459      Restoration:      Enhancement:      Establishment:**

**Describe all grant/match activities occurring on the tract here:** Grant and match funds will be used to acquire 459 acres of palustrine emergent, palustrine forested, and lacustrine wetlands as part of the Lee County Conservation District. The property is currently privately owned and unavailable to the public. By acquiring the tract, the Conservation District will be able to better manage a large, contiguous block of habitat for wildlife and provide conservation-compatible recreational opportunities for the public.

**Tract 1 - Jones: Acquisition Financial Plan Justification - \$785,000 and 459 acres**  
**Grant - \$180,000      Match - \$605,000      Non-Match - \$\_\_\_\_\_ Completion: May 2011**

##### LAND ACQUISITION DISCLOSURE

Type of acquisition: fee title

Holder of NAWCA conservation interest: Lee County Conservation Board

Grantor/Seller of conservation interest: Jones family

Tenure of conservation interest: perpetuity

All funding sources for acquisition: LCCB and grant funds

Are mineral rights severed or included? included

Are water rights severed or included? n/a

*EASEMENTS: n/a*

*LEASES: n/a*

Item & Work	Units	\$/unit	Total \$	Schedule (month, year)	Funding Source (Grant or Partner name)
<b>LAND COSTS</b>					
Fee title	459 ac	\$1,655.77/ac	760,000	May 2011	Grant and LCCB
Subtotal Land Costs					\$760,000
<b>APPRAISALS and OTHER ACQUISITION COSTS</b>					



Yellow book Appraisal	1	15,000	15,000	April 2011	LCCB
Legal fees, title work, closing costs			10,000	May 2011	LCCB
Subtotal Appraisals and Other Acquisition Costs					\$25,000
<b>TOTAL ACQUISITION DIRECT COSTS</b>					<b>\$785,000</b>

## TRACT 2 - Nordberg

**OVERALL ACRES AFFECTED: 438**

**STATE/FED AGENCIES HOLDING INTERESTS: Lee County (IA) Conservation Board**

### Acreage Summary of Grant/Match Activities on the Tract:

**Acquisition: 438      Restoration:      Enhancement:      Establishment:**

**Describe all grant/match activities occurring on the tract here:** Grant and match funds will be used to acquire 438 acres of palustrine emergent and lacustrine wetlands as part of the Lee County Conservation District. The property is currently privately owned and unavailable to the public. By acquiring the tract, the Conservation District will add to a network of wildlife habitats and reduce conflicts with the public over land management activities such as burning. The tract will also provide another location for safe, conservation-compatible public recreation such as bird-watching, fishing, and hunting.

**Tract 2 – Nordberg: Acquisition Financial Plan Justification - \$850,300 and 438 acres**  
**Grant - \$45,000      Match - \$805,300      Non-Match - \$\_\_\_\_\_ Completion: June 2011**

### LAND ACQUISITION DISCLOSURE

Type of acquisition: fee title

Holder of NAWCA conservation interest: Lee County Conservation Board

Grantor/Seller of conservation interest: Nordberg family

Tenure of conservation interest: perpetuity

All funding sources for acquisition: LCCB, Iowa Natural Heritage Fund, and grant funds

Are mineral rights severed or included? included

Are water rights severed or included? n/a

EASEMENTS: n/a

LEASES: n/a

Item & Work	Units	\$/unit	Total \$	Schedule (month, year)	Funding Source (Grant or Partner name)
<b>Land Costs</b>					
Fee title	438 ac	1,872.14/ac	820,000	June 2011	INHF, Grant, LCCB
Subtotal Land Costs					\$820,000
<b>APPRAISALS and OTHER ACQUISITION COSTS</b>					
Yellow Book Appraisal	1	15,000	15,000	April 2011	LCCB
Legal fees, title work, closing costs			15,300	June 2011	LCCB
Subtotal Appraisals and Other Acquisition Costs					\$30,300
<b>TOTAL ACQUISITION DIRECT COSTS</b>					<b>\$850,300</b>

***\*\*The remaining tracts in the Acquisition Financial Plan Justification were deleted to save space\*\****

## TRACT 9 - Red Rock Mgmt. Unit

**OVERALL ACRES AFFECTED: 429**

**STATE/FED AGENCIES HOLDING INTERESTS: Iowa DNR**

### Acreage Summary of Grant/Match Activities on the Tract:

**Acquisition:**                      **Restoration:**                      **Enhancement:**    **429**                      **Establishment:**

**Describe all grant/match activities occurring on the tract here:** Grant, match, and non-match funds will be used to enhance a 429-acre moist soil unit. Enhancement will involve soil grading and planting to improve water flow and diversity of habitats on the unit. Palustrine emergent, palustrine forested, and palustrine scrub-shrub habitats will be enhanced. All physical enhancements will require no maintenance and be largely self-sustaining. Success of plantings will be monitored for 5 years following planting, with partial re-planting if failure exceeds 30%.

**Tract 9 - Red Rock Mgmt. Unit: Enhancement Financial Plan Justification - \$350,000 and 429 acres**  
**Grant - \$175,000      Match - \$150,000      Non-Match - \$25,000      Completion: Sept 2012**

Item & Work	Units	\$/unit	Total \$	Schedule (month, year)	Funding Source (Grant or Partner name)
<b>CONTRACTS</b>					
Earthwork (Grading, scraping)	1	LS	185,000	Project Period	IDNR, Grant
Planting	32,500/LF	2.00/LF	65,000	Project Period	IDNR, Grant
Subtotal Contracts					\$250,000
<b>MATERIALS and EQUIPMENT</b>					
Tree plugs (ash, maple, swamp oak)	1,500 LF	\$10/LF	15,000	Project Period	Grant
Shrub plugs (willow, dogwood, etc.)	5,000 LF	\$5/LF	25,000	October, 2011	USFWS
Soil	20,000 CY	\$2/CY	40,000	Project Period	Grant
Subtotal Materials and Equipment					\$80,000
<b>NON-CONTRACT PERSONNEL</b>					
Project management	500 hrs	\$40/hr	20,000	Project period	Grant
Subtotal Non-Contract Personnel					\$20,000
<b>TOTAL RESTORATION DIRECT COSTS</b>					<b>\$350,000</b>

**TRACT 10 – Des Moines Mgmt. Unit**  
**OVERALL ACRES AFFECTED: 460**  
**STATE/FED AGENCIES HOLDING INTERESTS: Iowa DNR**

**Acreage Summary of Grant/Match Activities on the Tract:**

**Acquisition:**                      **Restoration:**                      **Enhancement:**    **460**                      **Establishment:**

**Describe all grant/match activities occurring on the tract here:** Grant, match, and non-match funds will be used to enhance a 460-acre moist soil unit. Enhancement will involve soil grading and supplemental planting to improve water flow and habitat function on the unit. Palustrine emergent and palustrine forested habitats will be enhanced. All physical enhancements will require no maintenance and be largely self-sustaining. Success of plantings will be monitored for 5 years following planting, with partial re-planting if failure exceeds 30%.

**Tract 10 – Des Moines Mgmt. Unit: Enhancement Financial Plan Justification - \$322,000 and 460 acres**  
**Grant - \$125,000      Match - \$172,000      Non-Match - \$25,000      Completion: Sept 2012**

Item & Work	Units	\$/unit	Total \$	Schedule (month, year)	Funding Source (Grant or Partner name)
<b>CONTRACTS</b>					
Earthwork	22,125/CY	\$8/CY	177,000	Project Period	Grant, IDNR

Planting	32,500 LF	\$2.00/LF	65,000	Project Period	IDNR
Subtotal Contracts					\$242,000
<b>MATERIALS and EQUIPMENT</b>					
Tree plugs	1,000 LF	\$10/LF	10,000	January, 2011	IDNR
Sedge and rush plugs	25,000 LF	\$2/LF	50,000	Project Period	Grant, USFWS
Subtotal Materials and Equipment					\$60,000
<b>NON-CONTRACT PERSONNEL</b>					
Project oversight	500 hrs	\$40/hr	20,000	Project Period	Grant
Subtotal Non-Contract Personnel					\$20,000
<b>TOTAL ENHANCEMENT DIRECT COSTS</b>					\$322,000

### TRACT TABLE EXAMPLE

**Tract Table**

Tract ID	Activity Type	Wetland Acres	Upland Acres	Public Access	Funding Category	Funding Source	County and State	Central Tract Location in Decimal Degrees	Final Title Holder
Tract 1	Fee Acquired	459.0	0	0	G,NM	NAWCA, LCCB	Lee County, Iowa	40.587980, -91.393166	LCCB
Tract 2	Fee Acquired	438.0	0	0	G,NM	NAWCA, LCCB, INHF	Lee County, Iowa	40.546688, -91.421373	LCCB
Tract 3	Fee Acquired	115.0	427.0	500	OM	HTU	Warren County, Iowa	41.342359, -93.479101	WCCB
Tract 4	Fee Acquired	70.0	56.0	126	OM	IDNR	Warren County, Iowa	41.451107, -93.360919	IDNR
Tract 5	Fee Acquired	6.0	133.0	139	NM	PF-L, TRCF	Jasper County, Iowa	41.773713, -92.831597	IDNR
Tract 6	Fee Acquired	55.0	205.0	260	NM	IDNR	Lee County, Iowa	40.572682, -91.648816	IDNR
Tract 7	Fee Acquired	19.2	160.8	150	NM	PF-W, PF-IC	Monroe County, Iowa	41.099689, -93.070235	IDNR
Tract 8	Fee Acquired	29.8	46.2	76	OM	IDNR	Monroe County, Iowa	41.130411, -93.089533	IDNR
Tract 9	Enhanced	429.0	0	429	G,NM, NO	NAWCA, IDNR, USFWS	Polk County, Iowa	41.499867, -93.348154	USFWS
Tract 10	Enhanced	460.0	0	460	G,NM, NO	NAWCA, IDNR, USFWS	Warren & Marion Counties, Iowa	41.477768, -93.321698	USFWS

Tract 11 Unidentified Tracts	Fee Acquired	65.0	153.0	218	G,NM	NAWCA, IDNR	16 county proposal area, Iowa	41.124510, -92.373827	IDNR, WCCB, LCCB
<b>Total Acres</b>		<b>2,146</b>	<b>1,181</b>	<b>2,358</b>					

**FINAL TITLEHOLDER SUMMARY: LCCB - 897 acres; USFWS - 889 acres; IDNR - 781 acres; WCCB - 542 acres; IDNR/WCCB/LCCB - 218 acres TBD.**

---



---

**TAQ #1 EXAMPLE**

Species	Numbers Estimated	Life Stage (Breeding, Migration, Wintering)	Explanation of Benefits (Identify individual tracts)
<b>High Priority</b>			
Mallard	Up to 12,000 expected collectively on grant and match tracts.	Migration and wintering	<u>1, 9</u> : Provide long-term protection of bottomland hardwood forest and moist soil enhancements on 888 acres near Red Rock Reservoir.
Northern Pintail	Up to 2,000 expected	Migration and wintering	<u>9, 10</u> : Moist soil enhancements and shallow palustrine wetland restorations on 706 acres adjacent to Fox River Wildlife Management Area will provide additional opportunities for foraging and loafing.
Lesser Scaup	Up to 300 expected	Wintering	<u>1, 3, 4, 7</u> : Provide 436 acres of feeding, resting and roosting locations along adjacent riverine habitats throughout the southern portions of the Des Moines and Skunk River watersheds.
<b>Other Priority</b>			
Wood Duck	50 breeding pairs expected. Up to 10,000 migrating and wintering expected	Breeding, migration, and wintering	<u>1, 2</u> : Securing bottomland hardwood habitat for this species will protect and increase foraging and nesting habitat.
<b>Other</b>			
Hooded Merganser	Up to 200 wintering expected	Wintering and breeding	<u>2, 4, 5, 8</u> : Long-term protection of more than 700 acres of wooded swamps, tidal creeks, and a freshwater estuary will increase wintering and breeding habitats.
Northern Shoveler	Up to 200 expected	Wintering	<u>1, 2, 4, 5</u> : Provide 450 acres of palustrine emergent wetland habitats adjacent to Red Rock Reservoir.
Gadwall	Up to 300 expected	Wintering	<u>10</u> : Expected to provide an additional 632 acres of freshwater marsh within the floodplain of the Des Moines River.

## TAQ #2 EXAMPLE

### A. Priority Bird Species:

Species/BCR#	Numbers Estimated	Life Stage (Breeding, Migration, Wintering)	Explanation of Benefits (Identify individual tracts)
King Rail/BCR 22	10 breeding pairs  100 birds during migration	Breeding and migration	<p><u>1 &amp; 2</u>: Provide 145 acres of palustrine emergent wetland intermixed with 476 acres of grassland in the floodplain of the South River.</p> <p><u>3, 8, 9 &amp; 10</u>: Provide 889 acres of diverse shallow wetland habitats associated with two sub-impoundments (i.e., moist soil management units) along the Des Moines River above Red Rock Reservoir.</p> <p><u>11</u>: Expected to provide another 35 acres of palustrine emergent wetland intermixed with 100 acres of grassland in floodplain habitats in the Des Moines and Skunk River Watersheds.</p>
American Bittern/BCR 22	30 breeding pairs  300 birds during migration	Breeding and migration	<p><u>1 &amp; 2</u>: Provide 145 acres of palustrine emergent wetland intermixed with 476 acres of grassland in the floodplain of the South River.</p> <p><u>4</u>: Provides 56 acres of upland grass and 65 acres of palustrine emergent wetland adjacent to Rock Creek Marsh, a diverse 120-acre palustrine emergent wetland above Rock Creek Lake.</p> <p><u>11</u>: Expected to provide another 35 acres of palustrine emergent wetland intermixed with 100 acres of grassland in floodplain habitats in the Des Moines and Skunk River Watersheds.</p> <p><u>3, 8, 9 &amp; 10</u>: Provide 889 acres of diverse shallow wetland habitats associated with two sub-impoundments along the Des Moines River above Red Rock Reservoir.</p>

### B. Other Wetland-Associated Bird Species

Species	Numbers Estimated	Life Stage (Breeding, Migration, Wintering)	Explanation of Benefits (Identify individual tracts)
American Golden-Plover	5,000 birds	Migration	<p><u>3, 8, 9 &amp; 10</u>: Provide 889 acres of diverse shallow wetland habitats associated with two sub-impoundments along the Des Moines River above Red Rock Reservoir. Water control mechanisms and management regimes will favor a mix of shallow open water, mudflats, and moderate emergent vegetation in late summer and early fall. Water levels will slowly rise throughout the fall providing shallow water over a wide area dominated by moist soil plants.</p> <p><u>1 &amp; 2</u>: Provide 145 acres of palustrine emergent wetland intermixed with 476 acres of grassland in the floodplain of the South River.</p>

			<p>Tract C includes two large wetlands (46 and 32 acres). These floodplain wetlands are expected to provide ideal migration habitat for this species in late summer and early fall.</p> <p><u>11</u>: Expected to provide another 35 acres of palustrine emergent wetland intermixed with 100 acres of grassland in floodplain habitats in the Des Moines River Watershed.</p>
Solitary Sandpiper	500 birds	Migration	<p><u>3, 8, 9 &amp; 10</u>: Provide 889 acres of diverse shallow wetland habitats associated with two sub-impoundments along the Des Moines River above Red Rock Reservoir. Water control mechanisms and management regimes will favor a mix of shallow open water, mudflats, and moderate emergent vegetation in late summer and early fall. Water levels will slowly rise throughout the fall providing shallow water over a wide area dominated by moist soil plants.</p>

### TAQ #3 EXAMPLE

#### A. National priority wetland areas:

National Bird Plan Priority Areas	In	Partially In	Out
NAWMP	X (Tracts 1-6)	X (Tracts 7, 8)	X (Tracts 9, 10)
PIF	X (Tracts 1-9)		X (Tract 10)
Wading Birds	X (All Tracts)		
Shorebirds	X (All Tracts)		

#### B. Regional important wetland areas:

\*Briefly describe how the proposed grant and match activities will address the current regional geographic priorities based on Joint Venture and other partner's science and planning information. It is prudent to work with [Joint Venture staff](#) to ensure that this proposal is based on the most current science and planning for all wetland-associated migratory birds.

Regional and Other Plans	Description
<p><i>Example of plans to include state, local, and/or Joint Venture.</i></p> <p><b>Example: Prairie Pothole Joint Venture Implementation Plan</b></p>	<p><b>Describe how the activities in this proposal support the regional plan.</b></p>

### TAQ #4 EXAMPLE

ACTIVITY AND TRACTS IN THE PROPOSAL	STATUS, TYPES, AND ACRES OF WETLANDS Note: Types subsidiary to types listed below have the same status.				UPLANDS	TOTAL
	DECREASING	STABLE	INCREASING	NO TREND DATA		

	PEM	PFO	E2Veg	E1	L	R	M2, PSS, PUB, E2US	PML, PRB, E2AB		
SECTION A										
Fee	908.3	207.8			109.8	26.7	4.4		1,181.0	2,438.0
ACQUIRED TOTAL	908.3	207.8			109.8	26.7	4.4		1,181.0	2,438.0
ENHANCED	757.2	63.2					68.6			889.0
TYPE TOTALS	1,665.5	271.0							1,181.0	3,327.0
STATUS TOTALS	1,936.5				136.5		73.0		1,181.0	3,327.0
GRAND TOTALS								2,146.0	1,181.0	3,327.0
SECTION B										
Tract: 1	290.7	84.5			83.8					459.0
Tract: 2	412.0				26.0					438.0
Tract: 3	94.0	8.3				12.7			427.0	542.0
Tract: 4	50.5	14.3				5.2			56.0	126.0
Tract: 5	6.0								133.0	139.0
Tract: 6	12.7	40.1				1.8	0.4		205.0	260.0
Tract: 7	2.3	14.8				2.1			160.8	180.0
Tract: 8	51.3	22.8					1.9			76.0
Tract: 9	312.2	48.2					68.6			429.0
Tract: 10	445.0	15.0								460.0
Tract: 11	35.0	23.0				3.0	4.0		153.0	218.0

**TAQ #5 EXAMPLE**

ACTIVITY	ACRES BY LONGEVITY OF BENEFITS				TOTAL ACRES
	* Includes water control structures made of material other than wood.				
	** Includes wood water control structures and pumps.				
	PERPETUITY	*26-99	**10-25	< 10	
SECTION A					
Fee	2,438				2,438
TOTAL ACQUIRED	2,438				2,438
ENHANCED		889			889
TOTAL	2,438	889			3,327
SECTION B					
Tract:1	459				459
Tract:2	438				438
Tract:3	542				542
Tract:4	126				126
Tract:5	139				139
Tract:6	260				260
Tract:7	180				180
Tract:8	76				76
Tract:9		429			429
Tract:10		460			460
Tract:11	218				218

## OPTIONAL MATCHING CONTRIBUTION PLAN EXAMPLE

NOTE: The tract name and specific location are fictional in this example. The descriptions have been adapted from previous submissions.

**What is the Match Plan Amount and Purpose?** This matching contribution plan seeks to maintain the eligibility of \$2,500,000 in non-federal funds for use as match in two future proposals that will be submitted over the next five years for wetland conservation work in the Iowa River Corridor. Those proposals will include habitat protection, restoration, and enhancement and will likely incorporate major work elements related to improving priority wetland habitat for migratory birds.

**What is the Match Plan Intent?** Iowa Natural Heritage Foundation (INHF) is participating in this proposal as a 10% partner by contributing \$2,500,000 of eligible match from a fee-title land protection project. The remaining balance of match funds from the 1,126-acre Tract 12 - Elk Creek Meadows acquisition (\$2,500,000) will provide a foundation of match for two future NAWCA proposals that will focus on priority wetland habitat for migratory birds in the Iowa River Corridor.

**What is the Match Plan Need?** Non-federal match is difficult to secure and is becoming scarcer as state funding for conservation work becomes more competitive. Without approval of this matching contribution plan, sufficient non-federal match may not be available for two more NAWCA proposals. Approval of this matching contributions plan will establish the financial foundation to accomplish priority wetland conservation work in the Iowa River Corridor. This future work will further support the long-term wetland conservation objectives defined in the Upper Mississippi River/Great Lakes Region Joint Venture implementation plan.

**Is there a Match Plan Chart?** Yes, see chart below.

**Where is the location of the MCP acquisition tract?** Tract 12 - Elk Creek Meadows is a 1,126 acre fee-title acquisition located in Marion County, Iowa (41.401477, -93.078003). The tract will be incorporated as a unit of Elk Rock State Park.

Match Plan Partner	Current Proposal	Proposal II	Proposal III	Total \$
Iowa Natural Heritage Foundation	\$2,500,000	\$1,500,000	\$1,000,000	\$5,000,000
<b>Current Proposal Total</b>	<b>\$2,500,000</b>			
<b>MCP Future Total</b>		<b>\$1,500,000</b>	<b>\$1,000,000</b>	<b>\$2,500,000</b>

---

---

## OTHER ATTACHMENTS

A. [TAQ #2 Priority NAWCA Non-Waterfowl Species List](#)



**A. BIRD CONSERVATION REGIONS AND TAQ #2 PRIORITY NAWCA NON-WATERFOWL SPECIES**

This list of wetland-associated birds originates from the 2021 Birds of Conservation Concern Report

<b>BCR 1 ALEUTIAN/BERING SEA ISLANDS</b>	<b>BCR 2 WESTERN ALASKA</b>	<b>BCR 3 ARCTIC PLAINS AND MOUNTAINS</b>
Black Oystercatcher Aleutian Tern Yellow-billed Loon (nb) Snowy Owl Short-eared Owl	Black Oystercatcher American Golden-Plover Bar-tailed Godwit Hudsonian Godwit Marbled Godwit Black Turnstone Dunlin (Northern Alaska) (nb) Rock Sandpiper (Pribilof) (nb) Short-billed Dowitcher Wandering Tattler Aleutian Tern Yellow-billed Loon Snowy Owl Short-eared Owl Olive-sided Flycatcher	American Golden-Plover Bar-tailed Godwit Dunlin (Northern Alaska) Pectoral Sandpiper Wandering Tattler Yellow-billed Loon Snowy Owl Short-eared Owl
<b>BCR 4 NORTHWESTERN INTERIOR FOREST</b>	<b>BCR 5 NORTHERN PACIFIC RAINFOREST</b>	<b>BCR 9 GREAT BASIN</b>
Hudsonian Godwit Rock Sandpiper (Pribilof) (nb) Short-billed Dowitcher Solitary Sandpiper (Western) Wandering Tattler Lesser Yellowlegs Aleutian Tern Short-eared Owl Olive-sided Flycatcher	Western Grebe Clark's Grebe Black Swift Allen's Hummingbird Black Oystercatcher Marbled Godwit (nb) Red Knot (Pacific) (nb) Rock Sandpiper (Pribilof) (nb) Short-billed Dowitcher Lesser Yellowlegs (nb) Willet (nb) Western Gull California Gull Aleutian Tern Western Screech-Owl (N. Pacific) Olive-sided Flycatcher	Western Grebe Clark's Grebe Black Swift Yellow Rail American Avocet Snowy Plover (Interior/Gulf Coast) Marbled Godwit (nb) Red Knot (Pacific) (nb) Pectoral Sandpiper (nb) Lesser Yellowlegs (nb) Willet Franklin's Gull California Gull Black Tern Forster's Tern American White Pelican Northern Harrier Short-eared Owl
<b>BCR 10 NORTHERN ROCKIES</b>	<b>BCR 11 PRAIRIE POTHOLE</b>	
Western Grebe Clark's Grebe Black Swift Yellow Rail Lesser Yellowlegs (nb) Willet Franklin's Gull California Gull Black Tern	Western Grebe Clark's Grebe Black-billed Cuckoo Yellow Rail Hudsonian Godwit (nb) Marbled Godwit Ruddy Turnstone (Atlantic) (nb) Dunlin (Hudson Bay) (nb) Pectoral Sandpiper (nb)	Short-billed Dowitcher (nb) Lesser Yellowlegs (nb) Willet Franklin's Gull California Gull Black Tern Northern Harrier Short-eared Owl LeConte's Sparrow

<b>BCR 12 BOREAL HARDWOOD TRANSITION</b>	<b>BCR 13 LOWER GREAT LAKES/ST. LAWRENCE PLAIN</b>	<b>BCR 14 ATLANTIC NORTHERN FORESTS</b>
Black-billed Cuckoo Yellow Rail Whimbrel (Atlantic) (nb) Ruddy Turnstone (Atlantic) (nb) Dunlin (Hudson Bay) (nb) Pectoral Sandpiper (nb) Semipalmated Sandpiper (E/C) (nb) Lesser Yellowlegs (nb) Black Tern Common Tern LeConte's Sparrow Canada Warbler	Black-billed Cuckoo American Golden-Plover (nb) Ruddy Turnstone (Atlantic) (nb) Dunlin (Hudson Bay) (nb) Pectoral Sandpiper (nb) Semipalmated Sandpiper (E/C) (nb) Short-billed Dowitcher (nb) Lesser Yellowlegs (nb) Short-eared Owl (nb) Belted Kingfisher Red-headed Woodpecker Canada Warbler	Black-billed Cuckoo Whimbrel (Atlantic) (nb) Hudsonian Godwit (nb) Purple Sandpiper (nb) Semipalmated Sandpiper (E/C) (nb) Lesser Yellowlegs (nb) Willet Short-eared Owl (nb) Olive-sided Flycatcher Bay-breasted Warbler Canada Warbler
<b>BCR 15 SIERRA NEVADA</b>	<b>BCR 16 SOUTHERN ROCKIES/COLORADO PLATEAU</b>	<b>BCR 17 BADLANDS AND PRAIRIES</b>
Western Grebe Clark's Grebe Black Swift Willet California Gull American Dipper	Western Grebe Clark's Grebe Black Swift Snowy Plover (Interior/Gulf Coast) Pectoral Sandpiper (nb) Lesser Yellowlegs (nb) California Gull Short-eared Owl Yellow-headed Blackbird	Western Grebe Black-billed Cuckoo Marbled Godwit Lesser Yellowlegs (nb) Willet Franklin's Gull California Gull Black Tern Northern Harrier Short-eared Owl American Dipper
<b>BCR 18 SHORTGRASS PRAIRIE</b>	<b>BCR 19 CENTRAL MIXED GRASS PRAIRIE</b>	<b>BCR 20 EDWARDS PLATEAU</b>
Clark's Grebe Snowy Plover (Interior/Gulf Coast) Whimbrel (Atlantic) (nb) Hudsonian Godwit (nb) Pectoral Sandpiper (nb) Lesser Yellowlegs (nb) Northern Harrier Short-eared Owl (nb)	Western Grebe Black-billed Cuckoo King Rail Snowy Plover (Interior/Gulf Coast) Whimbrel (Atlantic) (nb) Hudsonian Godwit (nb) Pectoral Sandpiper (nb) Lesser Yellowlegs (nb) Willet Least Tern (Atlantic/Interior) Black Tern Short-eared Owl (nb)	Pectoral Sandpiper (nb) Lesser Yellowlegs (nb)
<b>BCR 21 OAKS AND PRAIRIES</b>	<b>BCR 22 EASTERN TALLGRASS PRAIRIE</b>	
Pectoral Sandpiper (nb) Lesser Yellowlegs (nb) Least Tern (Atlantic/Interior) Little Blue Heron Prothonotary Warbler	Black-billed Cuckoo King Rail Hudsonian Godwit (nb) Ruddy Turnstone (Atlantic) (nb) Dunlin (Hudson Bay) (nb) Pectoral Sandpiper (nb)	Semipalmated Sandpiper (E/C) (nb) Short-billed Dowitcher (nb) Lesser Yellowlegs (nb) Short-eared Owl (nb) Rusty Blackbird (nb) Prothonotary Warbler

<b>BCR 23 PRAIRIE HARDWOOD TRANSITION</b>	<b>BCR 24 CENTRAL HARDWOODS</b>	<b>BCR 25 WEST GULF COASTAL PLAIN/OUACHITAS</b>
Western Grebe Black-billed Cuckoo King Rail Yellow Rail Marbled Godwit Ruddy Turnstone (Atlantic) (nb) Dunlin (Hudson Bay) (nb) Pectoral Sandpiper (nb) Semipalmated Sandpiper (E/C) (nb) Short-billed Dowitcher (nb) Lesser Yellowlegs (nb) Black Tern Short-eared Owl (nb) LeConte's Sparrow Rusty Blackbird (nb) Canada Warbler	Black-billed Cuckoo King Rail Semipalmated Sandpiper (E/C) (nb) American Woodcock Lesser Yellowlegs (nb) Least Tern (Atlantic/Interior) Short-eared Owl (nb) Wood Thrush LeConte's Sparrow (nb) Rusty Blackbird (nb) Prothonotary Warbler Kentucky Warbler Cerulean Warbler	King Rail Yellow Rail (nb) Pectoral Sandpiper (nb) American Woodcock Lesser Yellowlegs (nb) Least Tern (Atlantic/Interior) Swallow-tailed Kite Wood Thrush LeConte's Sparrow (nb) Prothonotary Warbler Kentucky Warbler
<b>BCR 26 MISSISSIPPI ALLUVIAL VALLEY</b>	<b>BCR 27 SOUTHEASTERN COASTAL PLAIN</b>	
King Rail Yellow Rail (nb) Pectoral Sandpiper (nb) Semipalmated Sandpiper (E/C) (nb) American Woodcock Lesser Yellowlegs (nb) Least Tern (Atlantic/Interior) Little Blue Heron Swallow-tailed Kite Wood Thrush LeConte's Sparrow (nb) Rusty Blackbird (nb) Prothonotary Warbler Kentucky Warbler Cerulean Warbler	King Rail Yellow Rail (nb) Sandhill Crane (Florida) American Oystercatcher Wilson's Plover Snowy Plover (Interior/Gulf Coast) Whimbrel (Atlantic) (nb) Marbled Godwit (nb) Ruddy Turnstone (Atlantic) (nb) Dunlin (Hudson Bay) (nb) Purple Sandpiper (nb) Pectoral Sandpiper (nb) Semipalmated Sandpiper (E/C) (nb) Short-billed Dowitcher (nb) American Woodcock	Lesser Yellowlegs (nb) Willet Least Tern (Atlantic/Interior) Gull-billed Tern Black Skimmer Swallow-tailed Kite Red-headed Woodpecker Wood Thrush LeConte's Sparrow (nb) Seaside Sparrow (Atlantic/Gulf) Saltmarsh Sparrow (nb) Rusty Blackbird (nb) Prothonotary Warbler Kentucky Warbler
<b>BCR 28 APPALACHIAN MOUNTAINS</b>	<b>BCR 29 PIEDMONT</b>	
Black-billed Cuckoo Rusty Blackbird (nb) Prothonotary Warbler Canada Warbler	Black-billed Cuckoo King Rail Short-eared Owl (nb) Rusty Blackbird (nb) Prothonotary Warbler	

<b>BCR 30 NEW ENGLAND/MID- ATLANTIC COAST</b>		
Black-billed Cuckoo King Rail American Oystercatcher Whimbrel (Atlantic) (nb) Hudsonian Godwit (nb) Ruddy Turnstone (Atlantic) (nb) Dunlin (Hudson Bay) (nb) Purple Sandpiper (nb) Pectoral Sandpiper (nb) Semipalmated Sandpiper (E/C) (nb) Short-billed Dowitcher (nb)	Lesser Yellowlegs (nb) Willet Least Tern (Atlantic/Interior) Gull-billed Tern Black Skimmer Short-eared Owl (nb) Seaside Sparrow (Atlantic/Gulf) Saltmarsh Sparrow Rusty Blackbird (nb) Prothonotary Warbler Canada Warbler	
<b>BCR 31 PENINSULAR FLORIDA</b>	<b>BCR 32 COASTAL CALIFORNIA</b>	<b>BCR 33 SONORAN AND MOJAVE DESERTS</b>
White-crowned Pigeon Mangrove Cuckoo King Rail Yellow Rail (nb) Sandhill Crane (Florida) American Oystercatcher Wilson's Plover Snowy Plover (Interior/Gulf Coast) Whimbrel (Atlantic) (nb) Ruddy Turnstone (Atlantic) (nb) Dunlin (Hudson Bay) (nb) Pectoral Sandpiper (nb) Semipalmated Sandpiper (E/C) (nb) Short-billed Dowitcher (nb) American Woodcock Lesser Yellowlegs (nb) Willet Least Tern (Atlantic/Interior) Gull-billed Tern Black Skimmer Magnificent Frigatebird Great Blue Heron (Great White) Reddish Egret Swallow-tailed Kite Marsh Wren (Worthington's) Seaside Sparrow (Atlantic/Gulf) Saltmarsh Sparrow (nb)	Western Grebe Clark's Grebe Black Swift Allen's Hummingbird Yellow Rail (nb) Black Oystercatcher Snowy Plover (Interior/Gulf Coast) Marbled Godwit (nb) Red Knot (Pacific) (nb) Short-billed Dowitcher (nb) Willet (nb) Heermann's Gull (nb) Western Gull California Gull Gull-billed Tern Black Tern Elegant Tern Black Skimmer Northern Harrier Western Screech-Owl (N. Pacific) Short-eared Owl Savannah Sparrow (Belding's) Song Sparrow (Alameda/Samuels) Bullock's Oriole Tricolored Blackbird Common Yellowthroat (San Francisco)	Western Grebe Clark's Grebe American Avocet Snowy Plover (Interior/Gulf Coast) Marbled Godwit (nb) Willet (nb) Yellow-footed Gull (nb) Gull-billed Tern Black Skimmer Tricolored Blackbird
<b>BCR 34 SIERRA MADRE OCCIDENTAL</b>	<b>BCR 35 CHIHUAHUAN DESERT</b>	
Western Grebe Whiskered Screech-Owl Cordilleran Flycatcher	Clark's Grebe Snowy Plover (Interior/Gulf Coast)	

<b>BCR 36 TAMAULIPAN BRUSHLANDS</b>		
King Rail Wilson's Plover Snowy Plover (Interior/Gulf Coast) Pectoral Sandpiper (nb) Lesser Yellowlegs (nb) Gull-billed Tern		
<b>BCR 37 GULF COAST PRAIRIE</b>	<b>BCR 67 HAWAII</b>	<b>PUERTO RICO AND VIRGIN ISLANDS</b>
King Rail Yellow Rail (nb) American Oystercatcher American Golden-Plover (nb) Wilson's Plover Snowy Plover (Interior/Gulf Coast) Whimbrel (Atlantic) (nb) Long-billed Curlew (nb) Hudsonian Godwit (nb) Marbled Godwit (nb) Ruddy Turnstone (Atlantic) (nb) Red Knot (Pacific) (nb) Dunlin (Hudson Bay) (nb) Pectoral Sandpiper (nb) Short-billed Dowitcher (nb) American Woodcock (nb) Lesser Yellowlegs (nb) Willet Least Tern (Atlantic/Interior) Gull-billed Tern Forster's Tern Sandwich Tern Black Skimmer Reddish Egret Swallow-tailed Kite LeConte's Sparrow (nb) Seaside Sparrow (Atlantic/Gulf) Prothonotary Warbler	Bristle-thighed Curlew (nb) Wandering Tattler (nb)	White-crowned Pigeon Black Swift American Coot (Caribbean) Yellow-breasted Crake (Henderson's) Limpkin (Puerto Rican/Hispaniolan) American Oystercatcher Wilson's Plover Snowy Plover (Caribbean) Semipalmated Sandpiper (E/C) (nb) Lesser Yellowlegs (nb) Willet (nb) Least Tern (Atlantic/Interior) Magnificent Frigatebird Brown Pelican (Caribbean)