

Willapa

National Wildlife Refuge Waterfowl Hunting Regulations 2020–2021



Waterfowl	Season Dates
Duck	Oct. 17 - 25 & Oct 28 - Jan. 31, scaup opens Nov. 7
Youth Duck, Goose & Coot	Sept. 26 (excludes Goose Hunt Area at Riekkola Unit*)
Youth, Veteran & Military Hunt	Feb. 6
Canada Goose September	Sept. 5 - 13 (excludes Goose Hunt Area at Riekkola Unit*)
Goose*	Oct. 17 - Nov 1 Daily Nov. 4 - Dec. 6, Dec. 23 - Jan. 24 Wednesdays, Saturdays, & Sundays only on all units
Brant	Jan. 9 - 31 on Saturday, Sunday, Tuesday, Thursday only
Coot	Oct. 17 - 25 & Oct 28 - Jan. 31
Snipe	Oct. 17 - 25 & Oct 28 - Jan. 31

Areas Closed:

The waters surrounding Long Island and much of southern Willapa Bay are closed to all waterfowl hunting by Presidential Proclamation. Please check Refuge map and signs for exact boundaries.

Areas Open:

Waterfowl hunting is permitted in designated areas at the Leadbetter Point, Potshot, North Potshot, Stanley Peninsula, Riekkola, Porter Point and Lewis Units according to Federal and State regulations. A Washington State Discover Pass is required to access the Leadbetter Unit from Stackpole Road.

***RIEKKOLA UNIT GOOSE & WATERFOWL HUNT AREAS:** No fee. There is a 25-shell limit per day-per hunter. **GOOSE HUNT AREA:** Hunting of waterfowl from blinds or within 100 feet of blind per state regulations is allowed. Hunters are required self-check in and out of blinds at the kiosk. Blind selection is first-come-first-serve. Blind capacity is 3 persons. One blind is available for hunters with disabilities. Outside of goose season, the blinds will remain open daily for duck hunting. **WATERFOWL HUNT AREA:** Hunting of waterfowl is allowed daily per state regulations from the blinds or free roam.

Welcome

Willapa National Wildlife Refuge was established in 1937 to protect migrating and wintering populations of Brant, waterfowl, shorebirds, and other migratory birds, and for other conservation purposes.

Caution

Hunters are cautioned to pay attention to tidal fluctuations when hunting tidal areas.

Hours

The Refuge is open daily from dawn to dusk. Hunting access is from 1 1/2 hours before legal sunrise until 1 1/2 hours after legal sunset.

Safety Zones

Hunting is prohibited within 150 yards of roads, trails, dikes, buildings and parking areas.

Foot Traffic Only

All units of the Refuge are open to foot traffic only unless otherwise specified.

Boats

Boats may be used to access the Refuge. For safety, know the local tide conditions. Tidal flows and fluctuations, and strong winds can make boating difficult and sometimes dangerous. A boat launch ramp is located at on Hwy 101 north of milepost 24 and car-top boat access (canoes/kayaks) is located at Riekkola.

Blinds

Digging, cutting trees, and vegetation altering for blind placement is not permitted. Permanent blinds, platforms, ladders, and screw-in foot pegs are prohibited.

Bait

Distribution of bait and hunting over bait is prohibited.

Dogs

Dogs are prohibited on the Refuge, except service dogs and dogs used for waterfowl hunting.

Fires

Fires are prohibited on the Refuge, except in designated areas in campgrounds on Long Island.

Shellfish Harvesting

State owned tidelands are open to public clamming in designated areas on the western side of Long Island. Privately owned tidelands are closed to the public.

Motorized Equipment

Motorized equipment including all-terrain-vehicles (ATV's), dirt bikes, and chain saws are prohibited.

Removal of Items Prohibited

Collecting and removing ANY archeological, historical, or natural material such as plants, mushrooms, berries, or antler sheds is prohibited.

Camping On Long Island

Camping is allowed in designated sites only. No more than 5 people per camp site, and camping is limited to 14 consecutive days (determined by the first member of the camping party's arrival). Only downed wood may be used for firewood. Campers are encouraged to camp bear friendly and exercise "Leave No Trace" practices. A camping permit is required during, and one week prior to, the early elk archery season ONLY. Self-issue camping permits are available on a first-come, first-serve basis at the Refuge Headquarters parking lot orientation panel. Camping permits are required for both hunters and non-hunters.

Alcohol

The use or possession of alcoholic beverages while hunting is prohibited.

Firearms

Persons possessing, transporting, or carrying firearms on National Wildlife Refuge System lands must comply with all provisions of State and local law. Persons may only use (discharge) firearms in accordance with refuge regulations (50 CFR 27.42 and specific refuge regulations in 50 CFR Part 32.)

Nontoxic Shot Required

All hunters are required to use only federally approved nontoxic shot while waterfowl hunting. Use or possession of lead shot is prohibited while hunting waterfowl.

Vehicles

Licensed motor vehicles are permitted only on public use roads as shown on the map. ATVs and UTVs are prohibited.

Accessibility Information

Equal opportunity to participate in and benefit from programs and activities of the U.S. Fish and Wildlife Service is available to all individuals regardless of physical or mental ability. For more information please contact the U.S. Department of the Interior, Office of Equal Opportunity, <https://www.doi.gov/pmb/eoo/public-civil-rights>.

Access

Hunters must park in designated parking areas, as identified on the map below, to access the Refuge for hunting. Gates opened to enter the hunting area from designated access points must be closed immediately after passing through. Access to the Refuge from private property is prohibited.

Hunting and Fishing Regulations

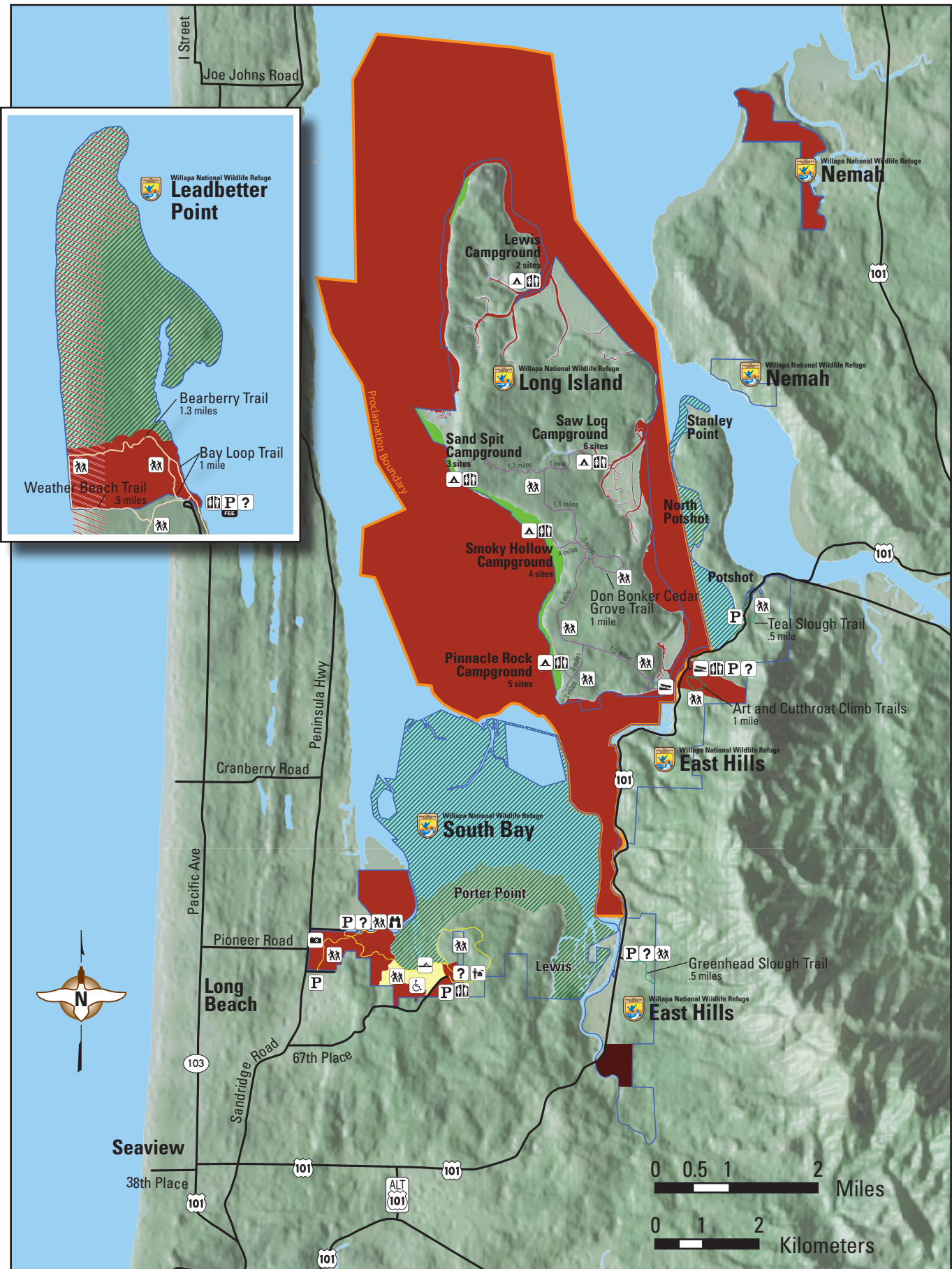
Hunting and fishing regulations are designed to provide safe recreational opportunities through wise use of renewable wildlife resources. Hunting and fishing are permitted in accordance with Federal regulations governing public use on National Wildlife Refuges as set forth in Title 50 of the Code of Federal Regulations. Hunting and fishing will be in accordance with applicable State of Washington regulations subject to the conditions stated below. Brochures may be obtained by mail, at the refuge headquarters, or from the refuge website.

Willapa National Wildlife Refuge
3888 SR 101, Ilwaco, WA 98624
360-484-3482
willapa@fws.gov
www.fws.gov/refuge/willapa

U.S. Fish & Wildlife Service 1-800-344-WILD

August 2020





Legend

Refuge Headquarters

Fee Parking

Parking

Restroom

Information/Interpretation

Accessible Hunt Blind

Hunting Blind

Boat Launch

Car-Top Boat Access

Observation Blind

Viewpoint

Campground
(Refuge Permit Required 1st Week of Elk Hunt)

Trails

Leadbetter Point Trails

Long Island Trails

South Bay Trails

East Hills Trails

Proclamation Boundary

Refuge Boundary

Waterfowl Hunting

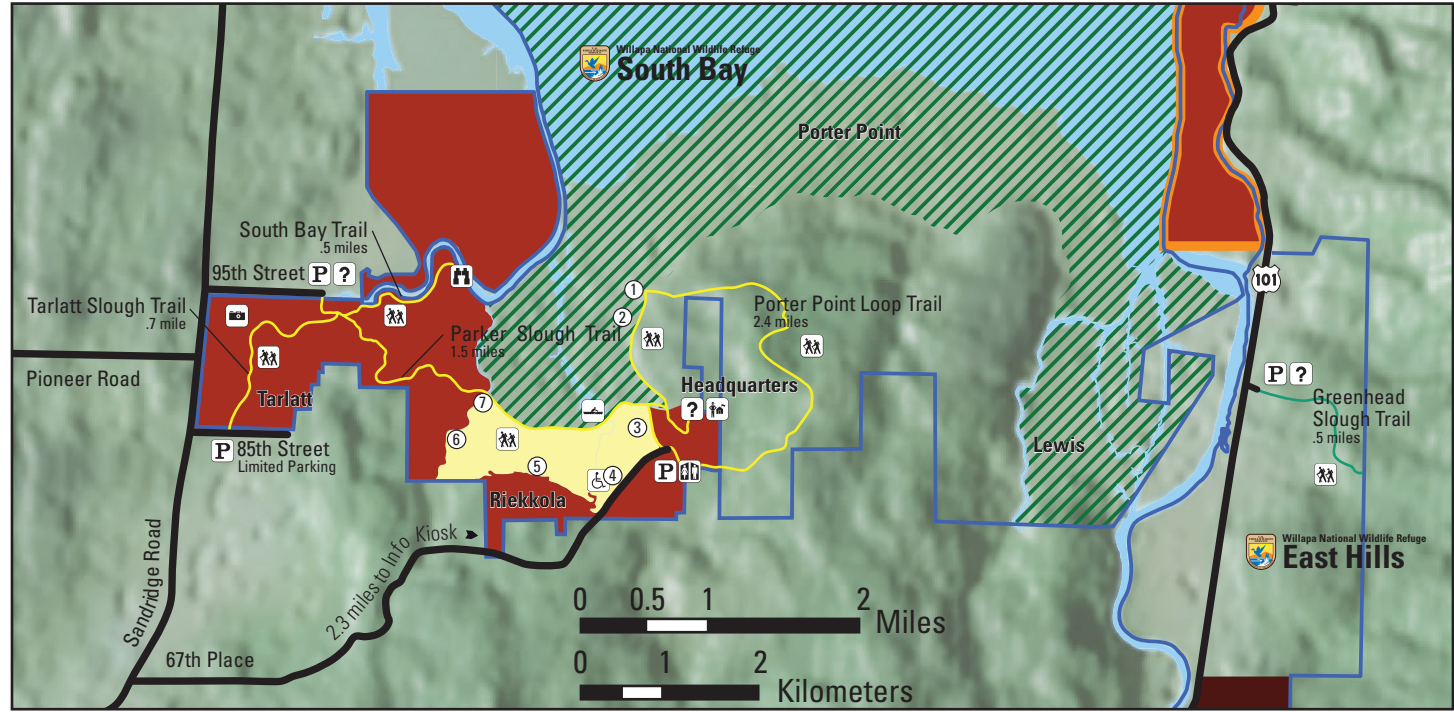
Goose Hunting

Clamming

Closed to Public

Closed to Public
March 15 - September 30

Refuge Lands, Tidelands, and
Water Closed to All Hunting



- ### Signs and Boundaries

Please respect the following signs:

 - Refuge Boundary: Entry permitted in accordance with refuge regulations
 - Closed Area: All entry prohibited
 - No Hunting Zone: Hunting, weapons, and game retrieval prohibited
 - No vehicles: All Traffic prohibited
 - Parking area: Designated areas to park while hunting

- ### Prohibited Activities

 - Possession of alcoholic beverages.
 - Camping and Fires, except in designated areas in campgrounds on Long Island.
 - Searching for or removal of any natural items such as antlers, skulls, plants, historic, and archaeological features, are protected by Federal law.
 - Use of electronic or photographic trail monitoring devices.
 - Marking or flagging any tree or other Refuge feature with reflectors, paint, or other substance.
 - Permanent tree stands, nails, screw-in steps, or other items that penetrate the outer bark of a tree.
 - Access to the Refuge from private property.
 - Hunting within 150 yards of any public use facility like restrooms, parking lots, etc.