

Willapa

National Wildlife Refuge Big Game Hunting Regulations 2020–2021



	Nemah		East Hills		South Bay		Long Island	
	SEASON DATES	LEGAL	SEASON DATES	LEGAL	SEASON DATES	LEGAL	SEASON DATES	LEGAL
Black-Tailed Deer								
Early Archery	Sept 1-25	Any deer	Sept 1-25	Any buck	Sept 1-25	Any deer	Sept 1-25	Any buck
Late Archery			Nov 25- Dec 15	Any buck			Nov 25- Dec 15	Any buck
Modern Firearm	Oct 17-Nov 1	Any buck	Oct 17-Nov 1	Any buck	Oct 17-Nov 1*	Any buck	Oct 17-Nov 1**	Any buck
Late Firearm	Nov 19-22	Any buck	Nov 19-22	Any buck	Nov 19-22*	Any buck	Nov 19-22**	Any buck
Early Muzzleloader	Sept 26-Oct 4	Any buck			Sept 26-Oct 4*	Any deer		
Late Muzzleloader	Nov 25-Dec 15	Any buck			Nov 25-Dec 15*	Any deer		
Elk								
Early Archery	Sept 12-24	3 pt. min. or antlerless	Sept 12-24	3 pt. min. or antlerless	Sept 12-24	Any elk	Sept 12-24	3 pt. min. or antlerless
Late Archery			Nov 25- Dec 15	3 pt. min. or antlerless			Nov 25- Dec 15	3 pt. min. or antlerless
Modern Firearm	Nov 7-18	3 pt. min.	Nov 7-18	3 pt. min.	Nov 7-18*	3 pt. min.		
Early Muzzleloader	Oct 3-9	3 pt. min.	Oct 3-9	3 pt. min.	Oct 3-9#	Any elk		
Late Muzzleloader					Nov 25-Dec 15	Any elk		
Bear								
							Aug 1-Nov 15	Any bear
Forest Grouse								
							Sept 1-Dec 31	4 per day/12 in possession

The Nemah (GMU 673) Includes parcel northeast and across the Naselle River from Stanley Point. This unit is boat access only from Willapa Bay or Naselle River.

The East Hills (GMU 681) Teal Slough to Bear River. Area around Art and Cutthroat Climb Trails and immediately north of Bear River are closed to hunting.

There is private property north of Greenhead Slough to Omeara Point. Access to the southeastern most portion of the Refuge requires boat access.

South Bay (GMU 684) Includes designated portions of the Riekkola, Porter Point & Lewis units. These units can be accessed by 67th Place from Sandridge Road in Long Beach or by boat from Willapa Bay.

*Firearms restriction. The use of centerfire or rimfire rifles is prohibited in these units.

#Big game hunting at Leadbetter Point is open ONLY during early muzzleloader elk season (WDFW reservation permit required).

Long Island (GMU 699) Hunting firearms and dogs are prohibited. Visitors must provide their own boat transportation to and from Long Island. For safety, know the local tide conditions. Access is best at a higher tide (6 feet or higher).

**ARCHERY ONLY. Hunters may hunt during modern firearm season, but must possess a valid modern firearm big game license and use archery equipment.

Welcome

Willapa National Wildlife Refuge was established in 1937 to protect migrating and wintering populations of Brant, other waterfowl, shorebirds, and other migratory birds, and for other conservation purposes.

Watch the Tides

Hunters are cautioned to pay attention to tidal fluctuations when hunting tidal areas.

Hours

The Refuge is open daily from dawn to dusk. Hunting access is from 1 1/2 hours before legal sunrise until 1 1/2 hours after legal sunset.

Safety Zones

Hunting is prohibited within 150 yards of roads, trails, dikes, buildings and parking areas.

Foot Traffic Only

All units of the Refuge are open to foot traffic only unless otherwise specified.

Boats

Boats may be used to access the Refuge. For safety, know the local tide conditions. Tidal flows and fluctuations, and strong winds can make boating difficult and sometimes dangerous. A boat launch ramp is located at on Hwy 101 north of milepost 24 and car-top boat access (canoes/kayaks) is located at Riekkola.

Blinds and Tree Stands

Tree stands may stay in place for 3 days and must be labeled with the hunter's name, phone number, and the date the stand was set-up. The stand may be set-up 1 1/2 hours before legal sunrise and must be removed before 1 1/2 hours after legal sunset on the third day. Digging, cutting trees, and vegetation altering for stand or blind placement is not permitted. Permanent blinds, platforms, ladders and screw-in foot pegs are prohibited.

Bait

Distribution of bait and hunting over bait is prohibited.

Dogs

Dogs are prohibited on the Refuge, except service dogs and dogs used for waterfowl hunting.

Fires

Fires are prohibited on the Refuge, except in designated areas in campgrounds on Long Island.

Shellfish Harvesting

State owned tidelands are open to public clamming in designated areas on the western side of Long Island. Privately owned tidelands are closed to the public.

Motorized Equipment

Motorized equipment including all-terrain-vehicles (ATV's), dirt bikes, and chain saws are prohibited.

Removal of Items Prohibited

Collecting and removing ANY archeological, historical, or natural material such as plants, mushrooms, berries, or antler sheds is prohibited.

Camping On Long Island

Camping is allowed in designated sites only. No more than 5 people per camp site, and camping is limited to 14 consecutive days (determined by the first member of the camping party's arrival). Only downed wood may be used for firewood. Campers are encouraged to camp bear friendly and exercise "Leave No Trace" practices. A camping permit is required during, and one week prior to, the early elk archery season ONLY. Self-issue camping permits are available on a first-come, first-serve basis at the Refuge Headquarters parking lot orientation panel. Camping permits are required for both hunters and non-hunters.

Alcohol

The use or possession of alcoholic beverages while hunting is prohibited.

Firearms

Persons possessing, transporting, or carrying firearms on National Wildlife Refuge System lands must comply with all provisions of State and local law. Persons may only use (discharge) firearms in accordance with refuge regulations (50 CFR 27.42 and specific refuge regulations in 50 CFR Part 32.)

Vehicles

Licensed motor vehicles are permitted only on public use roads as shown on the map. ATVs and UTVs are prohibited.

Accessibility Information

Equal opportunity to participate in and benefit from programs and activities of the U.S. Fish and Wildlife Service is available to all individuals regardless of physical or mental ability. For more information please contact the U.S. Department of the Interior, Office of Equal Opportunity, <https://www.doi.gov/pmb/eoo/public-civil-rights>.

Access

Hunters must park in designated parking areas, as identified on the map (reverse side), to access the Refuge for hunting. Gates opened to enter the hunting area from designated access points must be closed immediately after passing through. Access to the Refuge from private property is prohibited.

Hunting and Fishing Regulations

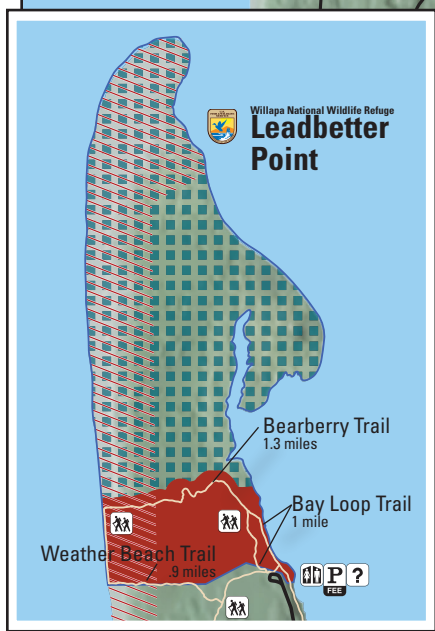
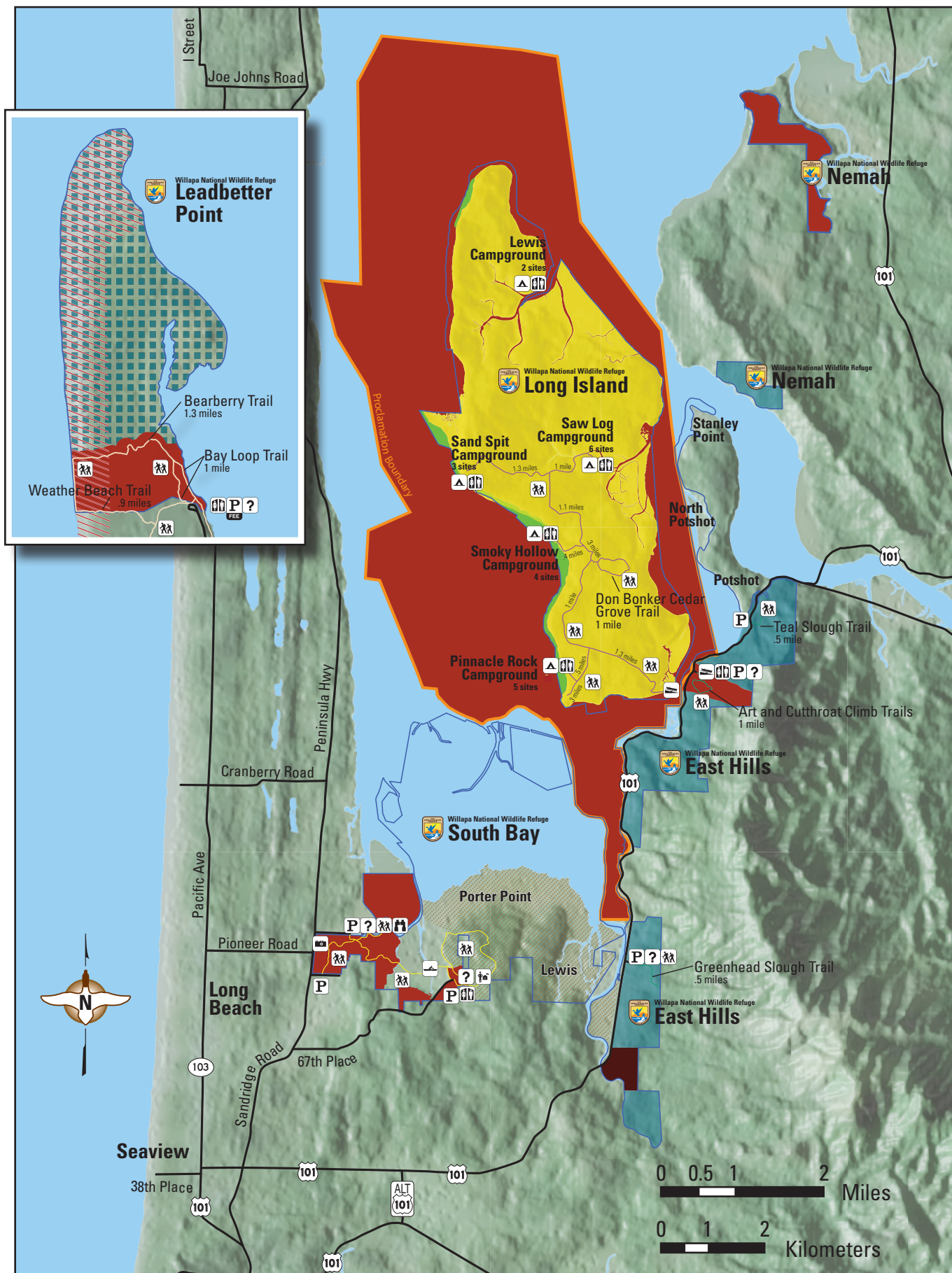
Hunting and fishing regulations are designed to provide safe recreational opportunities through wise use of renewable wildlife resources. Hunting and fishing are permitted in accordance with Federal regulations governing public use on National Wildlife Refuges as set forth in Title 50 of the Code of Federal Regulations. Hunting and fishing will be in accordance with applicable State of Washington regulations subject to the conditions stated below. Brochures may be obtained by mail, at the refuge headquarters, or from the refuge website.

Willapa National Wildlife Refuge
3888 SR 101, Ilwaco, WA 98624
360-484-3482
willapa@fws.gov
www.fws.gov/refuge/willapa

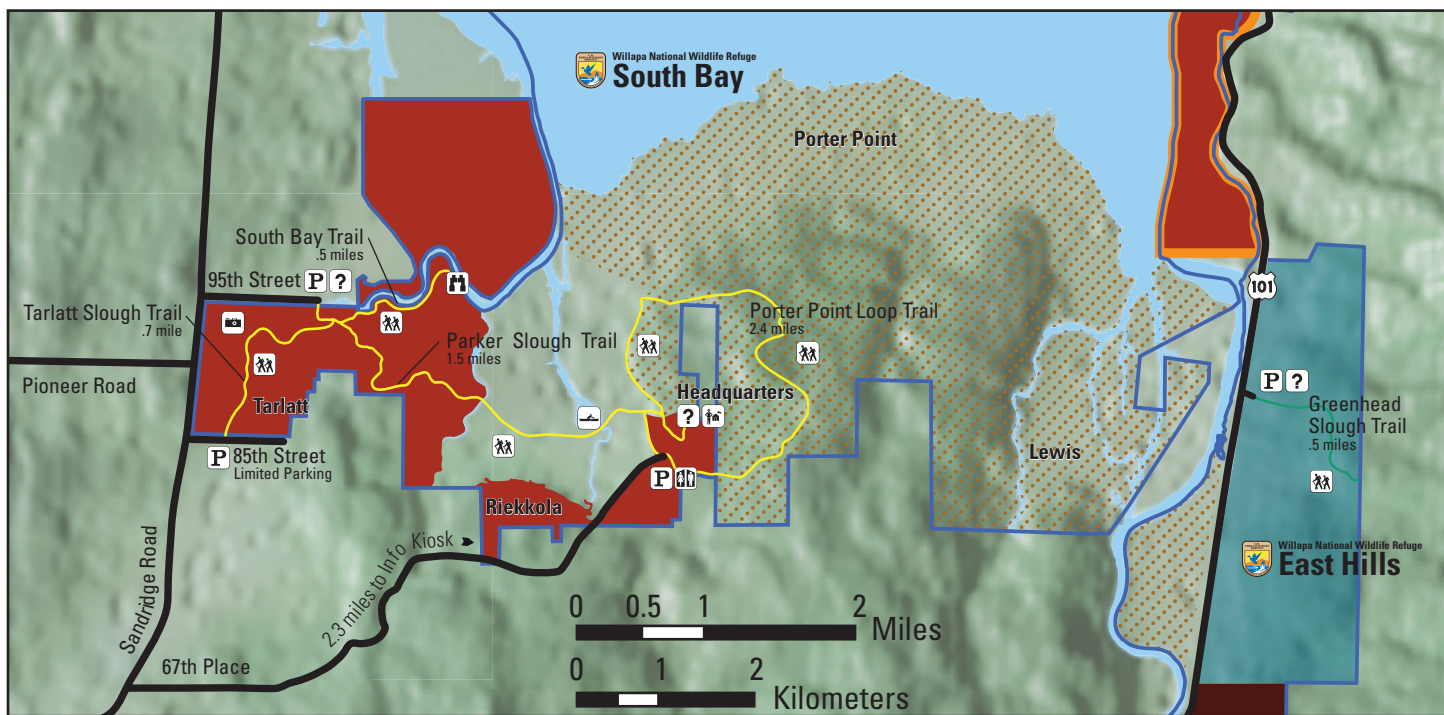
U.S. Fish & Wildlife Service 1-800-344-WILD

August 2020





- ### Legend
- Refuge Headquarters
 - Fee Parking
 - Parking
 - Restroom
 - Information/Interpretation
 - Boat Launch
 - Car-Top Boat Access
 - Observation Blind
 - Viewpoint
 - Campground
(Refuge Permit Required 1st Week of Elk Hunt)
 - Trails
 - Leadbetter Point Trails
 - Long Island Trails
 - South Bay Trails
 - East Hills Trails
 - Proclamation Boundary
 - Refuge Boundary
 - Clamming
 - Closed to Public
 - Closed to Public
March 15 - September 30
 - Deer and Elk Hunting
Firearm Restriction
 - Early Muzzleloader Elk Hunting
permit hunt-by-reservation only
 - Deer and Elk Hunting
All State Regulations Apply
 - Refuge Lands, Tidelands, and
Water Closed to All Hunting
 - Archery Hunting for Elk, Deer,
Black Bear, and Grouse *(Ruffed
and Sooty) Only.*



Signs and Boundaries

Please respect the following signs:

- Refuge Boundary: Entry permitted in accordance with refuge regulations
- Closed Area: All entry prohibited
- No Hunting Zone: Hunting, weapons, and game retrieval prohibited
- No vehicles: All Traffic prohibited
- Parking area: Designated areas to park while hunting

Prohibited Activities

- Possession of alcoholic beverages.
- Camping and Fires, except in designated areas in campgrounds on Long Island.
- Searching for or removal of any natural items such as antlers, skulls, plants, historic, and archaeological features, are protected by Federal law.
- Use of electronic or photographic trail monitoring devices.
- Marking or flagging any tree or other Refuge feature with reflectors, paint, or other substance.
- Permanent tree stands, nails, screw-in steps, or other items that penetrate the outer bark of a tree.
- Access to the Refuge from private property.
- Hunting within 150 yards of any public use facility like restrooms, parking lots, etc.

This is a unit of the National Wildlife Refuge System, a network of lands and waters managed for the benefit of wildlife and people.

