

Bosque del Apache

National Wildlife Refuge
Hunting Regulations 2022–2023



Welcome

Along the banks of the Rio Grande lies Bosque del Apache National Wildlife Refuge: a rest-stop, home, and breeding ground for migratory birds and other wildlife. Since 1939, hunters and wildlife enthusiasts from around the world have been drawn to this oasis in the Chihuahuan Desert which consistently provides outstanding wildlife observation opportunities on over 57,000 acres of public land.

Accessibility

Equal opportunity to participate in and benefit from programs and activities of the U.S. Fish and Wildlife Service is available to all individuals regardless of physical or mental ability. For more information please contact the U.S. Department of the Interior, Office of Equal Opportunity, <https://www.doi.gov/pmb/eoo/public-civil-rights>.

Please contact us if you require a reasonable accommodation in order to hunt on the refuge. Beyond gravel parking areas and information kiosks, the refuge does not offer any hunting facilities.

Commercial Activities

Commercial activities such as guiding and outfitting, require a special use permit issued by Bosque del Apache National Wildlife Refuge.

Safety

At any time, you may encounter mountain lions, bobcats, coyotes, rattlesnakes, stinging or biting insects or other potentially dangerous wildlife or sharp plants such as cactus or mesquite. Be alert for changing weather conditions that could bring strong winds, lightning or flashfloods.

Firearms

Persons possessing, transporting, or carrying firearms on National Wildlife Refuge System lands must comply with all provisions of State and local law. Persons may only use (discharge) firearms in accordance with refuge regulations (50 CFR 27.42 and specific refuge regulations in 50 CFR Part 32).

Wilderness

Some areas of the hunt units are designated as wilderness. We do not allow the use of motor vehicles, motorized equipment or mechanical transport, such as bicycles or game carts, in wilderness. We ask all refuge visitors to help us preserve wilderness character by practicing leave no trace principles and abiding by the Wilderness Act of 1964.

Hunting Regulations

Hunting regulations are designed to provide safe recreational opportunities through wise use of renewable wildlife resources. Hunting is allowed in accordance with Federal regulations governing public use on National Wildlife Refuges as set forth in Title 50 of the Code of Federal Regulations.

Hunting will be in accordance with applicable State of New Mexico regulations subject to the conditions stated below. For more information on state regulations and requirements go to <http://www.wildlife.state.nm.us/home/publications/>

Access

WHEN: You may only be on the refuge one hour before legal sunrise until one hour after legal sunset. Legal shooting hours align with State of New Mexico regulations.

HOW: You may hunt by foot in the East, West and Bajada Hunt Units. You may use bicycles within the East Hunt Unit only and bicycles must stay on designated roads. We do not allow the use of any motor vehicles, motorized equipment or mechanical transport in wilderness. You may use horses and pack stock in support of hunting only in the East Hunt Unit.

Dogs

Hunters are allowed to use dogs when hunting, as per State of New Mexico hunting regulations. Dogs must be restrained when not hunting.

Special Hunts

Youth Turkey Hunting and Special Light Goose Hunting opportunities may be available at the refuge. Information about these hunts, including how to be considered for participation, are available on the refuge website.

Equipment

You must remove all personal property, such as tree stands, elevated platforms, and ground blinds, at the end of each day's hunt.

State hunting and fishing regulations, seasons, shooting hours, methods of take (archery and muzzleloader only), bag limits, and license requirements apply to all hunting on the refuge. The refuge is open to hunting within parameters of the state season and bag limits. The refuge is closed to general hunting for all species not listed in the following table, including species designated as unprotected by state regulations.

Bosque del Apache National Wildlife Refuge

1001 Highway 1
San Antonio, NM 87832

575-835-1828

http://www.fws.gov/refuge/Bosque_del_Apache
For relay service TTY/Voice: 711

U.S. Fish & Wildlife Service
1-800-344-WILD

August 2022



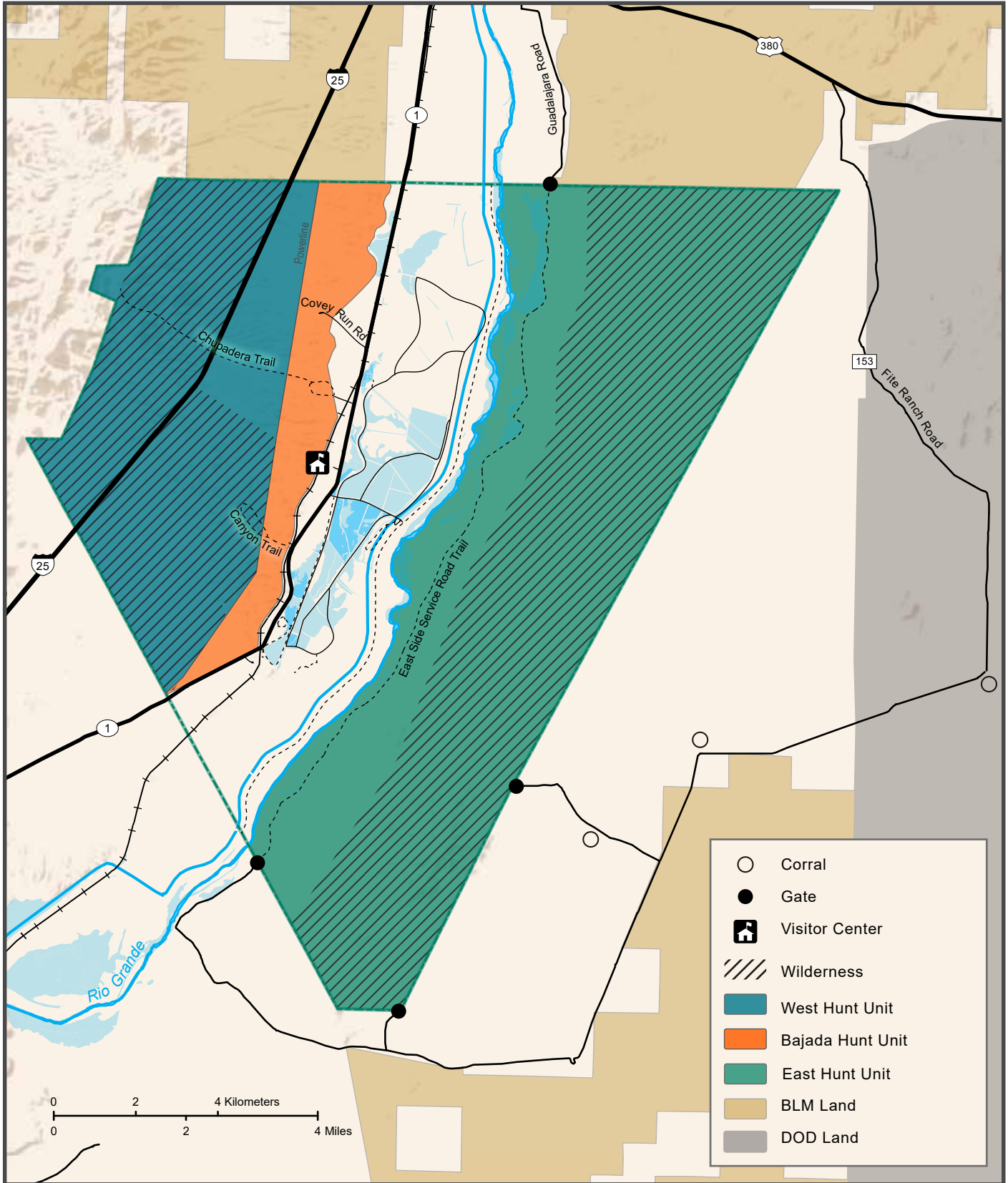
| Activity | West Hunt Unit | Bajada Hunt Unit | East Hunt Unit |
|--|---|--|--|
| Migratory Game Birds | | | |
| Mourning Dove | Sept. 1 – Oct. 28, 2022 | Sept. 1 – Oct. 28, 2022 | Sept. 1 – Oct. 28, 2022 |
| White-winged Dove | Dec. 1 – Jan. 1, 2023 | Dec. 1 – Jan. 1, 2023 | Dec. 1 – Jan. 1, 2023 |
| Upland Game | | | |
| Eurasian Collared-Dove | Apr. 1 – Mar. 31 2023 | Apr. 1 – Mar. 31, 2023 | Apr. 1 – Mar. 31, 2023 |
| Gambel's Quail Scaled Quail Northern Bobwhite Quail Montezuma Quail | Nov. 15 – Feb. 15, 2023 | Nov. 15 – Feb. 15, 2023 | Nov. 15 – Feb. 15, 2023 |
| Non-Game and Unprotected Species | | | |
| Jackrabbit Cottontail Rabbit | (no closed season) | (no closed season) | (no closed season) |
| Feral Hog | June 1 – Mar. 31, 2023 | June 1 – Mar. 31, 2023 | June 1 – Mar. 31, 2023 |
| Big Game | | | |
| Mule Deer (archery) GMU* 17 | Sept. 1 – 24, 2022 Jan. 1 – 15 2023 | Not applicable | Not applicable |
| Mule Deer (archery) GMU 20 | Sept. 1 – 24, 2022 Jan. 1 – 15, 2023 | Sept. 1 – 24, 2022 Jan. 1 – 15, 2023 | Sept. 1 – 24, 2022 Jan. 1 – 15, 2023 |
| Mule Deer (muzzleloader) GMU 17 | Oct. 29 – Oct. 31, 2022 | Not applicable | Not applicable |
| Mule Deer (muzzleloader) GMU 20 | Oct. 29 – Oct. 31, 2022 | Oct. 29 – Oct. 31, 2022 | Oct. 29 – Oct. 31, 2022 |
| Mule Deer (any legal sporting arm) GMU 17 | Nov. 5 – 9, Nov. 12 – 16, Nov. 19 – 27 (youth only), 2022 | Not applicable | Not Applicable |
| Mule Deer (any legal sporting arm) GMU 20 | Nov. 5 – 9, 2022 Nov. 12 – 16, 2022 | Nov. 5 – 9, 2022 Nov. 12 – 16, 2022 | Nov. 5 – 9, 2022 Nov. 12 – 16, 2022 |
| Javelina | Jan. 1 – Mar. 31, 2023 | Jan. 1 – Mar. 31, 2023 | Jan. 1 – Mar. 31, 2023 |
| Oryx | Closed | Closed | Jun. 1 – Mar. 31, 2023 |
| Turkey | | | |
| Bearded Rio Grande Turkey | Apr. 15 – May 10, 2022 Apr. 8 – 10 (youth only) | Apr. 15 – May 10, 2022 Apr. 8 – 10 (youth only) | Apr. 15 – May 10, 2022 Apr. 8 – 10 (youth only) |
| State regulations apply for bag limits. *GMU = Game Management Unit | | | |

Prohibited Activities

By law, recreational activities on national wildlife refuges are prohibited unless expressly permitted. Prohibited activities include:

- Possession of alcoholic beverages
- Camping and Fires
- Searching for or removal of any natural items such as antlers, skulls, plants, historic, and archaeological features, are protected by Federal law.
- Use of electronic or photographic trail monitoring devices
- Marking or flagging any tree or other refuge feature with reflectors, paint, or other substance.
- Game Retrieval/ Transportation carts or any other mechanized device used for retrieving game or transportation are prohibited in the Wilderness Area portion of the refuge.
- Permanent tree stands, nails, screw-in steps, or other items that penetrate the outer bark of a tree.
- Leaving tree stands and ground blinds in the same location for more than 7 consecutive days.
- Hunting is prohibited within 200 yards of any public use facility





Bajada Hunt Unit

West from hunt unit boundary to power line: Bows and arrows, crossbows and bolts, muzzle-loader or muzzle-loading shotguns only

West Hunt Unit

West from power line to west refuge boundary: Any legal sporting arms

East Hunt Unit

East shore of Rio Grande to east refuge boundary: Any legal sporting arms

Produced in the Division of Visitor Services
Created: September 2, 2021
Datum: NAD 83

The USFWS makes no warranty for use of this map and cannot be held liable for actions or decisions based on map content

North

