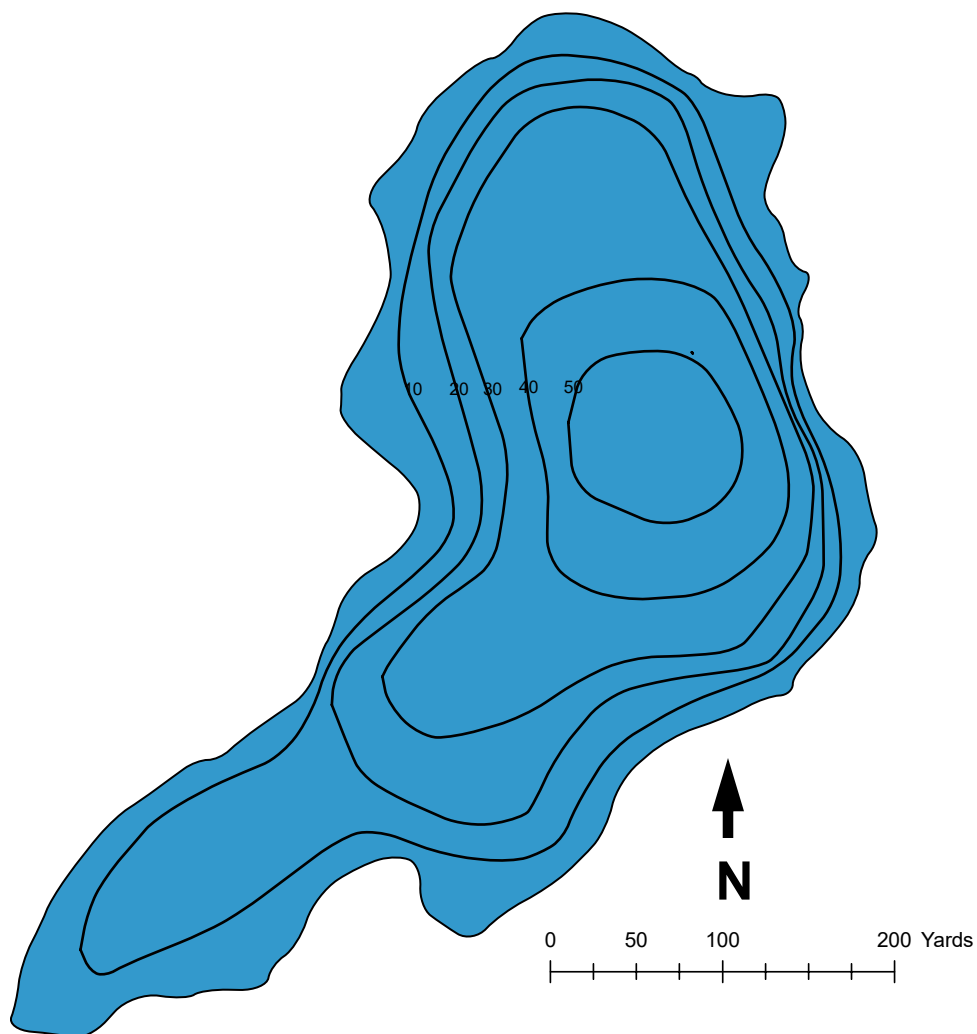




U.S. Fish & Wildlife Service

Kenai Fish & Wildlife Field Office
43655 Kalifornsky Beach Road
Soldotna, AK 99669 907-262-9863

Portage Lake



Surface Acres: 28

Maximum depth (ft): 52

Shoreline Length (ft): 1625

Most recent fish survey: 1984

Sport fish species observed: very few coho salmon

Latitude: 60°43.84'N

Longitude: -150°32.78'W

Access: Swan Lake Canoe Trail

Lake Public Access: Mile 83.4 Sterling Hwy, 16 miles north on Swanson River Road, 9.5 miles east on Swan Lake Road. East Entrance to Swan Lake Canoe Trails has parking area with toilets and trailhead register. Swan Lake Canoe Area is designated wilderness. No motorized equipment or vehicles. Please pack out litter.