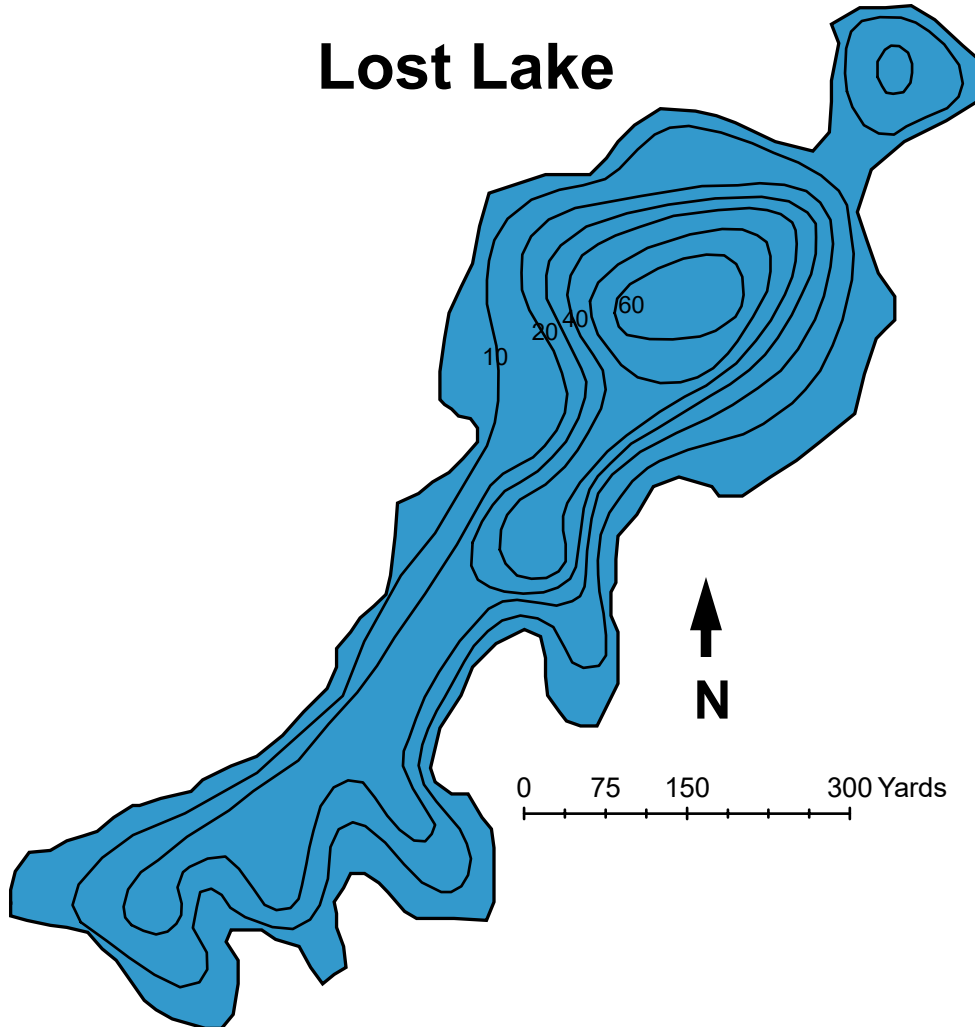




U.S. Fish & Wildlife Service

Kenai Fish & Wildlife Field Office
43655 Kalifornsky Beach Road
Soldotna, AK 99669 907-262-9863

Lost Lake



Surface Acres: 50

Maximum depth (ft): 60

Shoreline Length (ft): 2941

Most recent fish survey: 1965

Sport fish species observed: Arctic char

Latitude: 60°48.59'N

Longitude: -150°30.19'W

Access: Swanson River Canoe Trail

Lake Public Access: Mile 83.4 Sterling Hwy, 16 miles north on Swanson River Road, 12 miles east on Swan Lake Road. Parking area at end of road with toilets and trailhead register. Portage to and paddle across Paddle, Lure, Pot, MJ's, Pond, Balloon, Lonely, Kuviak, Junco, and Lost Lakes. Swanson River Canoe Area is designated wilderness. No motorized equipment or vehicles. Please pack out litter.