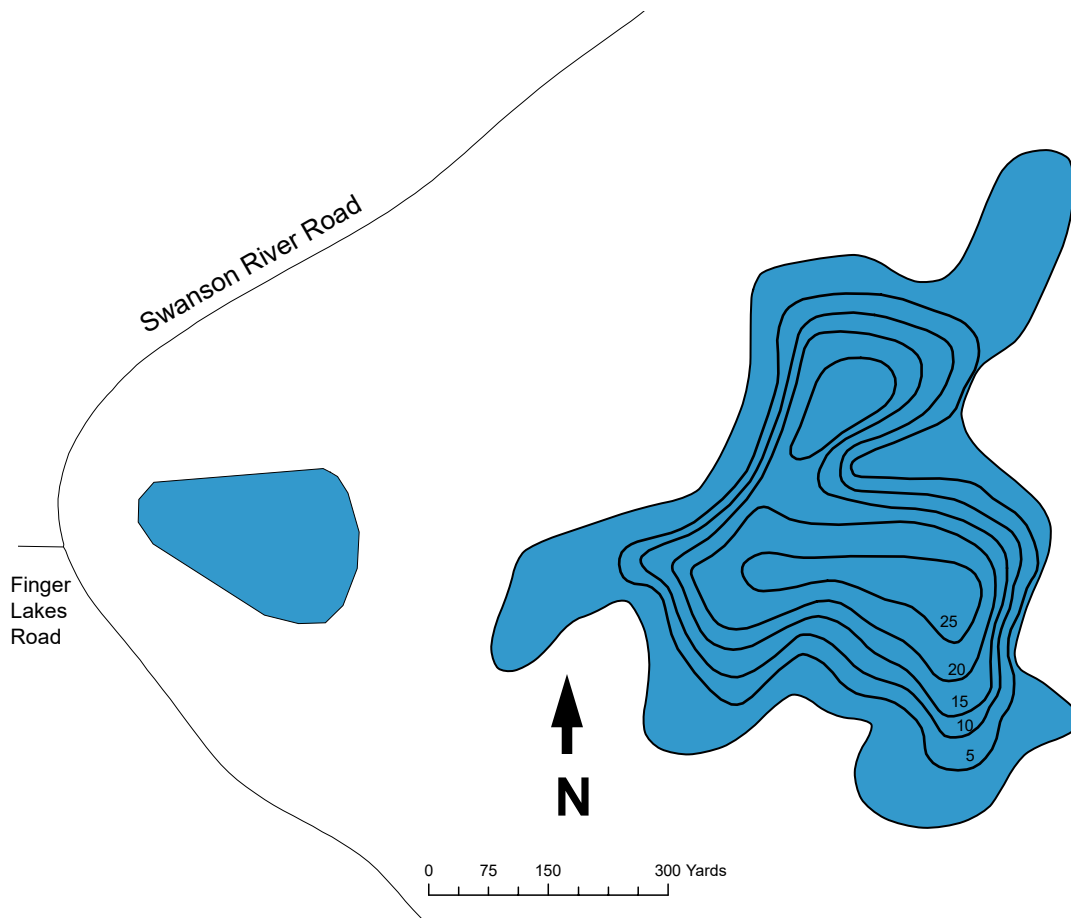




U.S. Fish & Wildlife Service

Kenai Fish & Wildlife Field Office
43655 Kalifornsky Beach Road
Soldotna, AK 99669 907-262-9863

Lili Lake



Surface Acres: 61

Maximum depth (ft): 26

Shoreline Length (ft): 2961

Most recent fish survey: 1993

Sport fish species observed: none

Latitude: 60°39.44'N

Longitude: -150°49.04'W

Access: Swanson River Road

Lake Public Access: Mile 83.4 Sterling Hwy, 9.8 miles north on Swanson River Road. Lili Lake is on east side of road. No facilities. No trash pickup; please pack out litter.