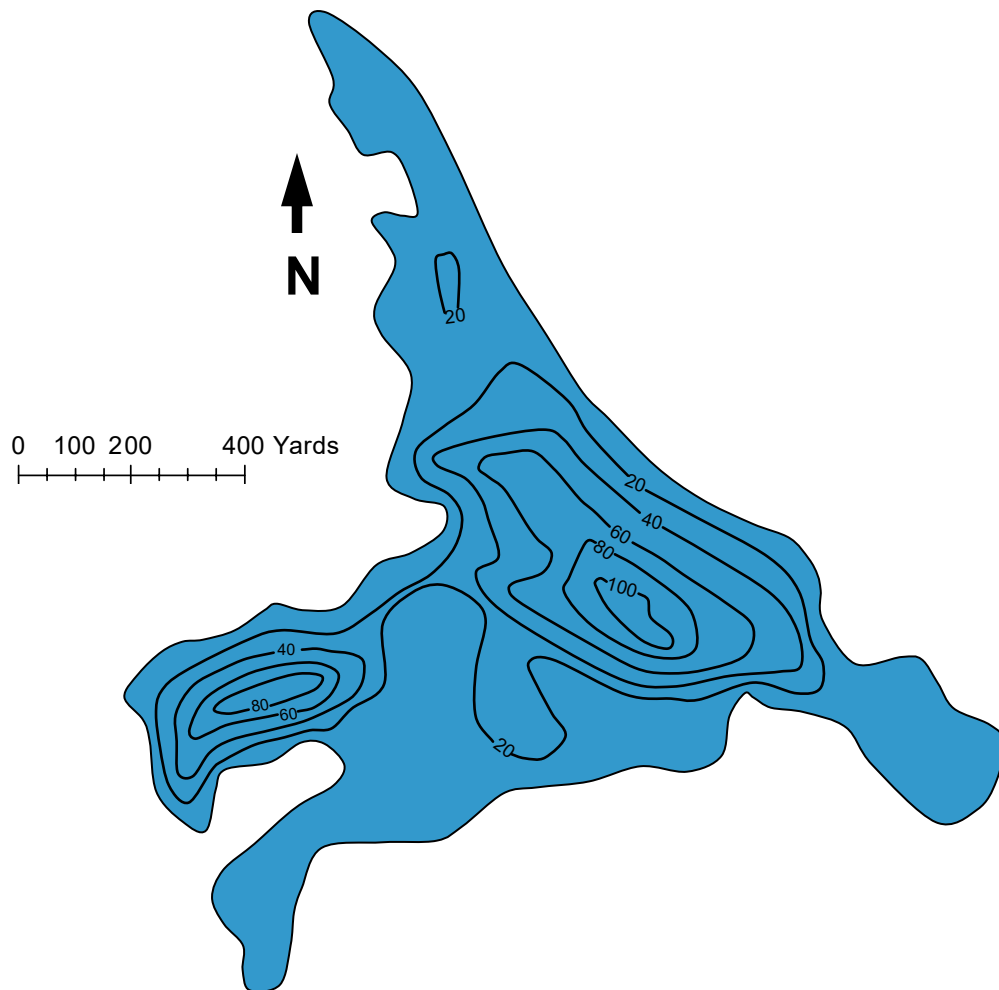




U.S. Fish & Wildlife Service

Kenai Fish & Wildlife Field Office
43655 Kalifornsky Beach Road
Soldotna, AK 99669 907-262-9863

Drake Lake



Surface Acres: 160

Maximum depth (ft): 105

Shoreline Length (ft): 7,812

Most recent fish survey: 1974

Sport fish species observed: rainbow trout, Arctic char

Latitude: 60°42.20'N

Longitude: -150°44.63'W

Access: Trail

Lake Public Access: Mile 83.4 Sterling Hwy, 13.1 miles north on Swanson River Road, 1.3 miles east on Drake/Skookum Lakes Trail. Parking area located at Drake/Skookum Lakes Trailhead. Please pack out litter.