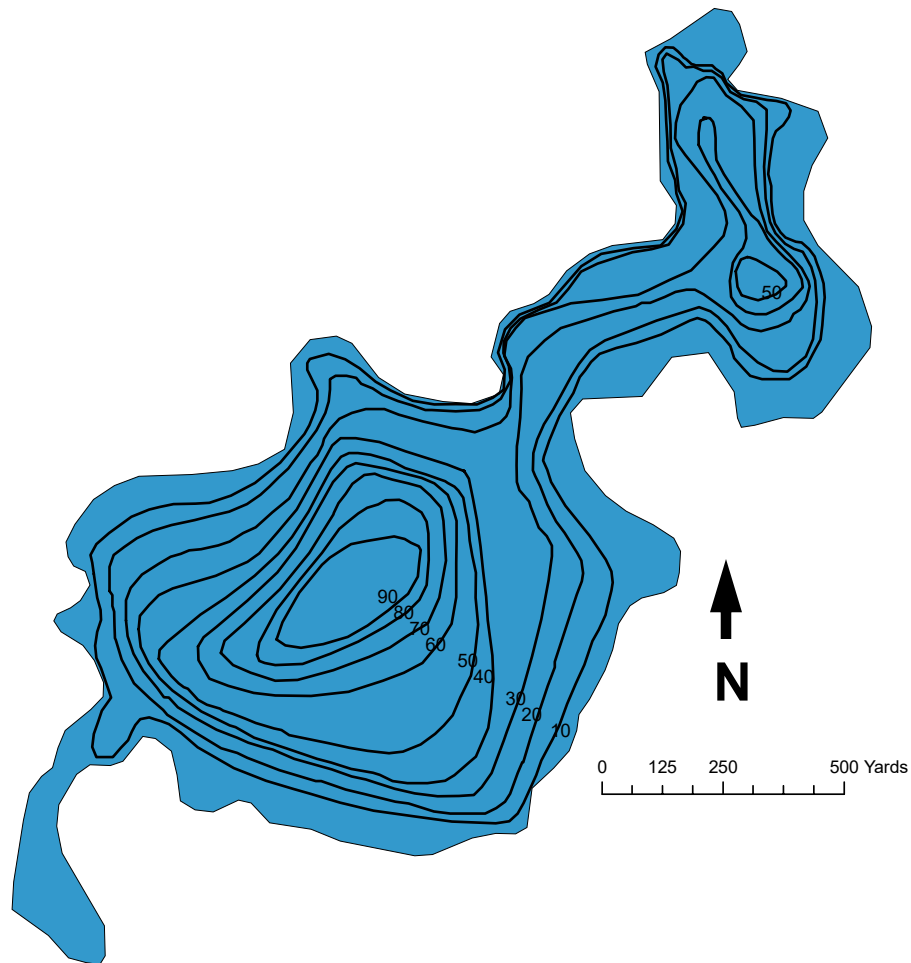




## U.S. Fish & Wildlife Service

Kenai Fish & Wildlife Field Office  
43655 Kalifornsky Beach Road  
Soldotna, AK 99669 907-262-9863

# Dolly Varden Lake



Surface Acres: 259

Maximum depth (ft): 95

Shoreline Length (ft): 7233

Most recent fish survey: 1983

Sport fish species observed: Dolly Varden char, rainbow trout

Latitude: 60°42.29'N

Longitude: -150°47.12'W

Access: Swanson River Road

Lake Public Access: Mile 83.4 Sterling Hwy, 13 miles north on Swanson River Road.

Campground on site with drinking water, toilets, boat launch, and no fee. Motorized boats are allowed with a "no wake" restriction. No trash pickup; please pack out litter.