

Welcome

Whittlesey Creek National Wildlife Refuge is located in northern Wisconsin and encompasses several important tributaries and shoreline along Lake Superior. The refuge was established in 1999 in an effort to restore coaster brook trout, a native trout that spawns in Whittlesey Creek and spends its adult life in Lake Superior. Another important role of the refuge is to provide environmental education in the local community through a partnership with other agencies in the Northern Great Lakes Visitor Center.

Safety

The Refuge is bordered irregularly by private land. Please be aware of refuge boundary signs.

Firearms

Persons possessing, transporting, or carrying firearms on National Wildlife Refuge System lands must comply with all provisions of State and local law. Persons may only use (discharge) firearms in accordance with refuge regulations (50 CFR 27.42 and specific refuge regulations in 50 CFR Part 32.)

Vehicles

Licensed motor vehicles are permitted only on public roads and designated Refuge parking areas. Consult attached map. Overnight parking is prohibited.

Accessibility Information

Equal opportunity to participate in and benefit from programs and activities of the U.S. Fish and Wildlife Service is available to all individuals regardless of physical or mental ability. For more information please contact the U.S. Department of the Interior, Office of Equal Opportunity, <https://www.doi.gov/pmb/eo/public-civil-rights>

Hunting and Fishing Regulations

Hunting and fishing regulations are designed to provide safe recreational opportunities through wise use of renewable wildlife resources. Hunting and fishing are permitted in accordance with Federal regulations governing public use on National Wildlife Refuges as set forth in Title 50 of the Code of Federal Regulations.

Hunting and fishing will be in accordance with applicable State of Wisconsin regulations subject to the conditions

Activity	Season Dates	Harvest	Special Regulations
Archery Deer	Applicable state season applies	2 hours before and after legal shooting hours	State regulations apply
Waterfowl	Applicable state season applies	2 hours before and after legal shooting hours	State regulations apply
Sport Fishing	Applicable state season applies	Sunrise to Sunset	We prohibit the taking of any mussel (clam), crayfish, frog, leech, and turtle species by any method on the refuge.
Trout Fishing	First Saturday in May to November 15	Sunrise to Sunset	Daily bag limit: 5 trout and salmon in total, only 2 of which may be brown trout over 15" and only 1 of which may be a rainbow trout. All brook trout must be immediately released. Length limit: brown trout 10", salmon 12" and rainbow trout 26".

stated in this brochure. Brochures may be obtained by mail, at the refuge website, or at the Northern Great Lakes Visitor Center.

Specific information related to trout fishing is also included in state fishing regulations for Lake Superior under Whittlesey Creek, downstream from Town Hall Rd.

Access

All visitors, except for hunters, may only access the refuge from sunrise to sunset. Hunters may enter the refuge no earlier than 2 hours before legal shooting hours and must exit the refuge no later than 2 hours after legal shooting hours end.

Hunters and anglers must park in designated parking areas, as identified on the map below. Public access to refuge lands east of Highway 13 open to both waterfowl and archery deer is south from Longbridge Rd. Via adjacent DNR property, or the shoreline of Lake Superior.

Tree Stands/ Blinds/ Decoys

Ground blinds or any elevated stands are permitted only if they do not damage live vegetation, including trees. The use of nails, wire, screws or bolts to attach a stand to a tree, or hunting from a tree into which a metal object has been driven to support a hunter, is prohibited.

All stands and all other personal property, including decoys, must be removed from the Refuge at the end of each day's hunt. The construction or use of permanent hunting blinds is prohibited.

Harvest Reporting

Hunters must follow statewide harvest reporting regulations.

To Report Violations

- Refuge Law Enforcement Officer, phone 612-283-8963
- 1-844-FWS-TIPS (397-8477)

29270 County HWY G
Ashland, WI 54806

715-685-2678
TTY Federal Relay System: 1-800-877-8339

U.S. Fish & Wildlife Service
1-800-344-WILD

September 2023

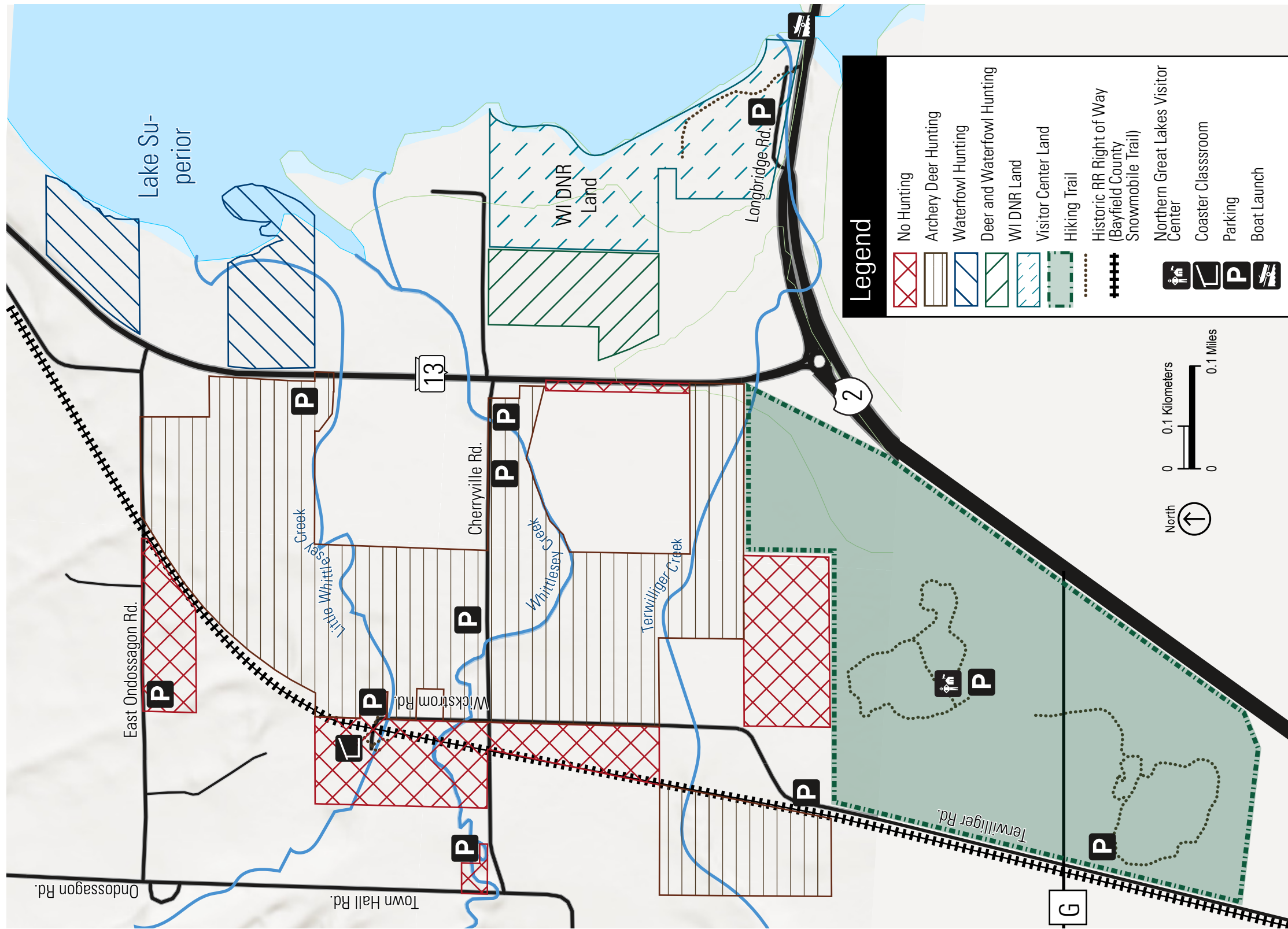


U.S. Fish & Wildlife Service

Whittlesey Creek

National Wildlife Refuge
Hunting and Fishing Regulations
2023–2024





Prohibited Activities

- By law, recreational activities on national wildlife refuges are prohibited unless expressly permitted.
- The use or possession of alcohol or controlled substances are prohibited.
- Fires, including charcoal, as well as all fireworks and explosives, are prohibited.
- Camping is prohibited.
- Pets must be on a leash, except when used for the purpose of hunting where permitted in accordance with federal and state regulations and seasons.
- Vegetation may not be damaged or removed from the Refuge including willow and birch twigs or branches.
- Disposing of animal carcasses, trash, yard waste or other debris is prohibited.
- Trapping of furbearers is prohibited.
- Firearm deer hunting is prohibited on the Refuge.
- Distribution of feed or bait or hunting over bait is prohibited. This includes salt and minerals.
- Bows must be cased at all times while in areas posted as no hunting.
- The use of artificial lights and vehicle headlights are prohibited to take or locate game.
- Hunters must obtain permission from the landowner to enter private property to retrieve deer.
- Hunters must possess and use only non-toxic shot while waterfowl hunting.
- Motorized watercraft use is prohibited.
- We prohibit all types of motorized vehicles on frozen water bodies.
- We prohibit the taking of any mussel (clam), crayfish, frog, leech, and turtle species by any method on the refuge.