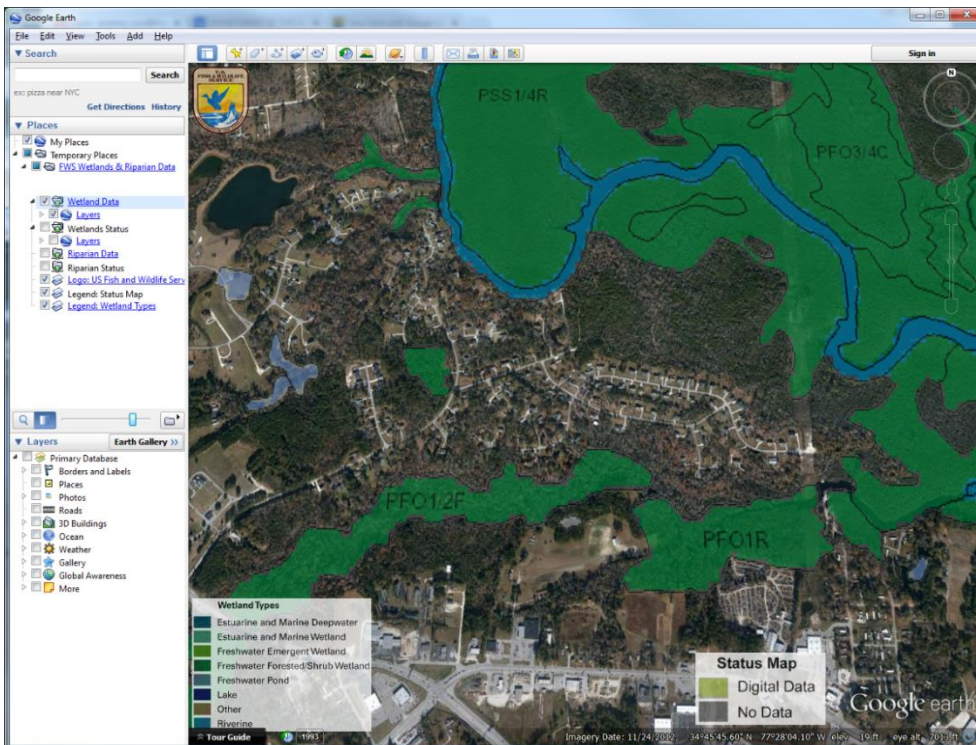




U.S. Fish And Wildlife Service Viewing Wetlands with Google Earth¹



A Keyhole Markup Language (KML) file has been created to view the U.S. Fish and Wildlife Service's Wetlands data in virtual globe software applications such as Google Earth and ArcGIS Explorer. KML is an XML language focused on geographic visualization, including annotation of maps and images.

To ensure that you use the latest version, it is recommended that you launch your browser and navigate to the following web page:

<http://www.fws.gov/wetlands/Data/Google-Earth.html>

Once you navigate to the previously mentioned web page, select the link:

[Wetlands-Data.kml](#)

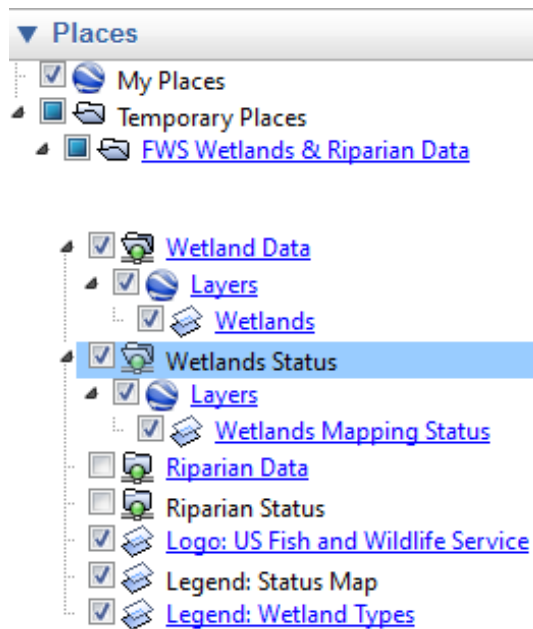
Google Earth allows you to travel the world through a virtual globe and view satellite imagery, maps, terrain, 3D buildings, and much more. With Google Earth's rich, geographical content, you are able to experience a more realistic view of the world. Google Earth acquires the best imagery available, most of which is approximately one to three years old, and also provides access to historical imagery.

Using this KML file, Google Earth imagery can be used as a backdrop for viewing the wetlands digital data.

and open the downloaded file. If Google Earth² fails to launch automatically, the file can also be opened by first launching the Google Earth application.

User Notes:

- Click on any “Places” (Google Earth left panel) checkbox to view or hide the data layer.
- Important: Do not leave the Wetland Status layer on (checked) while viewing Wetlands Data.
- If the wetland polygons and labels display with very low resolution, please try deselecting the Ocean layer at the lower left section of Google Earth.
- To remove the Wetlands KMZ file from Google Earth, right-click on the FWS Wetlands & Riparian folder located under “Places”, then select Delete.
- Please visit our Map Creation and Mapper Display page (<http://www.fws.gov/wetlands/Data/Map-Creation.html>) for more tips and technical information.



- The data are also available through an OGC compliant Web Map Service: (<http://www.fws.gov/wetlands/Data/Web-Map-Services.html>).

Digital data available on this site represent the latest, most accurate information available from the U.S. Fish and Wildlife Service's National Wetlands Inventory.

U.S. Fish and Wildlife Service
800/344-WILD
<http://www.fws.gov>

August 2014



¹ The use of trade, product, industry or firm names or products is for informative purposes only and does not constitute an endorsement by the U.S. Government or the Fish and Wildlife Service. Links to non-Service Web sites do not imply any official U.S. Fish and Wildlife Service endorsement of the opinions or ideas expressed therein or guarantee the validity of the information provided. USFWS employees, please view this document for more information on appropriate uses of google Earth:

<http://www.fws.gov/wetlands/Data/KML/Appropriate-Google-Use-FWS-20120702.pdf>

² Please note that Google Earth version 6, or higher, is required to run this file.