

## Aquatic Invasive Species

Aquatic Invasive Species are non-native species that cause harm to the environment, the economy, or human health. Lake Champlain is home to 49 known aquatic invasive species. Many more are “on the doorstep” of Lake Champlain, threatening to enter from nearby waterways. Once introduced to Lake Champlain AIS has the potential to infest other inland water bodies in the basin, which is why spread prevention is critical.

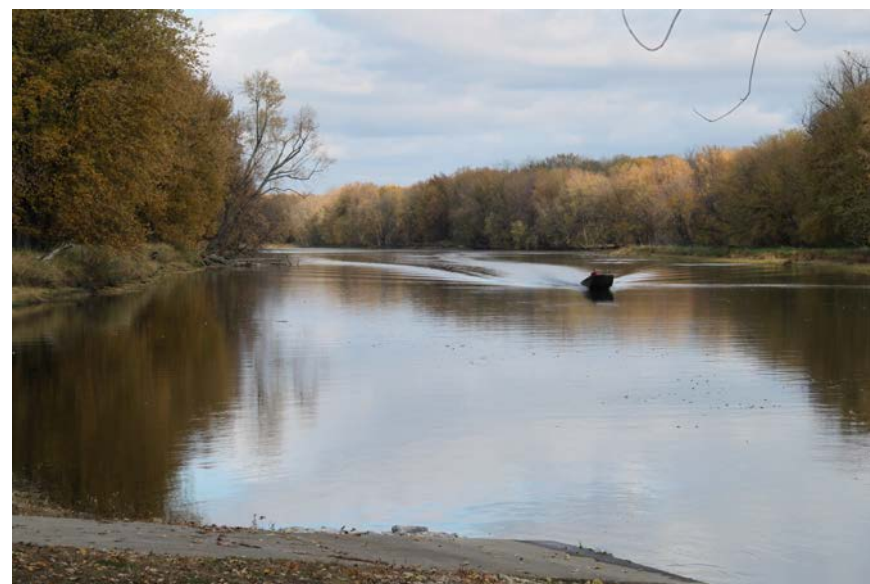


Please help stop the spread by utilizing our canoe/kayak wash station at Louie’s Landing!



# Missisquoi National Wildlife Refuge

## Boating Guide



**Missisquoi NWR**  
**29 Tabor Road**  
**Swanton, VT 05488**  
**802-868-4781**  
**[missisquoi@fws.gov](mailto:missisquoi@fws.gov)**



# Welcome to the Missisquoi National Wildlife Refuge

Boating is one of the best ways to see the Refuge's wetland habitat and wildlife.



This guide will help you plan your trip and provide information about where boating is permitted on Missisquoi NWR.



Scan for more information

## Boating Safety

- Always check the weather; conditions on the lake and in the bay can be very different from the Missisquoi River.
- Wear Personal Flotation Devices (PFD's).
- Tell someone where you are launching from, where you plan to go and when you plan on returning.
- Bring plenty of water and food bases on the length of your trip.
- Bring a cell phone in case of trouble.
- Wear sunblock and sun protective clothing when necessary. Dress for the weather.
- Observe "no wake" boating especially around canoes and other boats on the river.
- When paddling, don't overestimate your abilities—wind and river currents can increase the difficulty of paddling.
- Avoid using alcohol.
- If using a motorboat ensure backup paddles and push poles are on board and the engine is in good working condition.
- Bring a First Aid kit on board with you.
- The Missisquoi River has many submerged trees and changing water depths—be aware and slow down to prevent damage and

Trip Planning—Distances		
Launch Point	Destination	Distance
Louie's Landing	Missisquoi River Mouth	4 miles one way, 8 miles round trip
Louie's Landing	Dead Creek Loop	11 miles round trip
Louie's Landing	Dead Creek Mouth	4.4 miles one way, 8.8 miles round trip

## MNWR Signs to Know



Areas open for angling are marked with **green tape** on the top of our boundary buoys. The green reflective tape will indicate that it is open to authorized uses such as fishing. Buoys with **red tape** are not open for fishing or boating.

**Note:** Anglers must have a Vermont fishing license and abide by all fishing regulations. For more info please visit:

<http://www.vtfishandwildlife.com/fish/>



This sign is used to mark areas which are closed to all public uses. This includes all uses which are considered authorized by the refuge.

**Note:** If you are on the bay or lake and see a buoy with this sign, you are not permitted to boat behind the sign to the shore.



This sign marks sensitive nesting areas. Please do not enter any areas marked with these signs even when the water levels flood the forest.

## About the Refuge

Missisquoi National Wildlife Refuge, established in 1943, consists of 6,760 acres and the entire Missisquoi River Delta. Recently designated as a *Wetland of International Importance under the Ramsar Convention on Wetlands*, Missisquoi's wetland habitats are protected and managed for a wide diversity of wildlife species and habitats.

Missisquoi NWR was established in part due to the large concentration of migrating waterfowl, up to 20,000 birds, which descend on the refuge's wetland habitats during the fall. The Refuge is also known for its breeding black terns and spiny soft-shell turtles which may be viewed while boating on the Refuge.

### Boat Launches in MNWR

Location	Boats Allowed	Open Season
Louie's Landing	Boats/Canoes/Kayaks	All Season
Mac's Bend Road	Boats/Canoes/Kayaks	September-December
Charcoal Creek	Canoes/Kayaks	All Season

### Boat Launches near MNWR

Larry Greene Access Area	Boats/Canoes/Kayaks	All Season
Rock River/Highgate	Small boats/Canoes/Kayaks	All Season

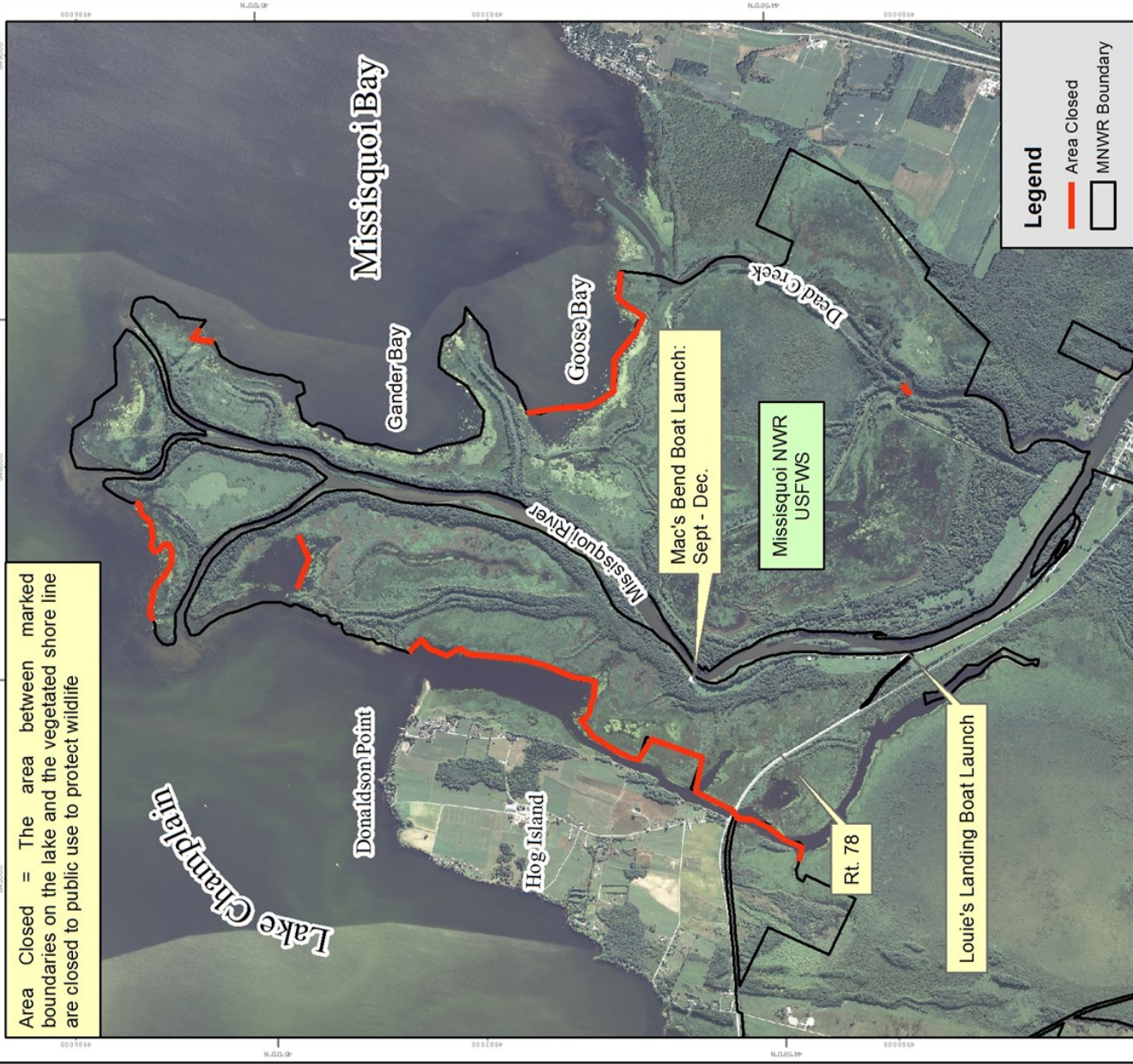
**Note:** Boating is permitted along the Missisquoi River and in Lake Champlain where it borders the refuge. **Portions of the refuge are closed to the boaters to protect wildlife and habitat.** Please refer to the map for areas closed to boats.





### Areas CLOSED to Fishing and Boating on Missisquoi NWR

**Area Closed** = The area between marked boundaries on the lake and the vegetated shore line are closed to public use to protect wildlife



Map Projection: NAD\_1983\_UTM\_Zone\_18N  
 Graphic Units: degrees, minutes, seconds  
 Map Grid Unit: Meter  
 Map for planning purposes only

1 = 40,000